



## MARITIME INDUSTRY AUTHORITY SITUATION REPORT – 05

Passenger and Cargo Shipping Operations from March 24 to March 25, 2020  
amid Code Red Sublevel 2 for the COVID-19  
*Data generated on March 25, 2020, 5:10 PM*

### HIGHLIGHTS

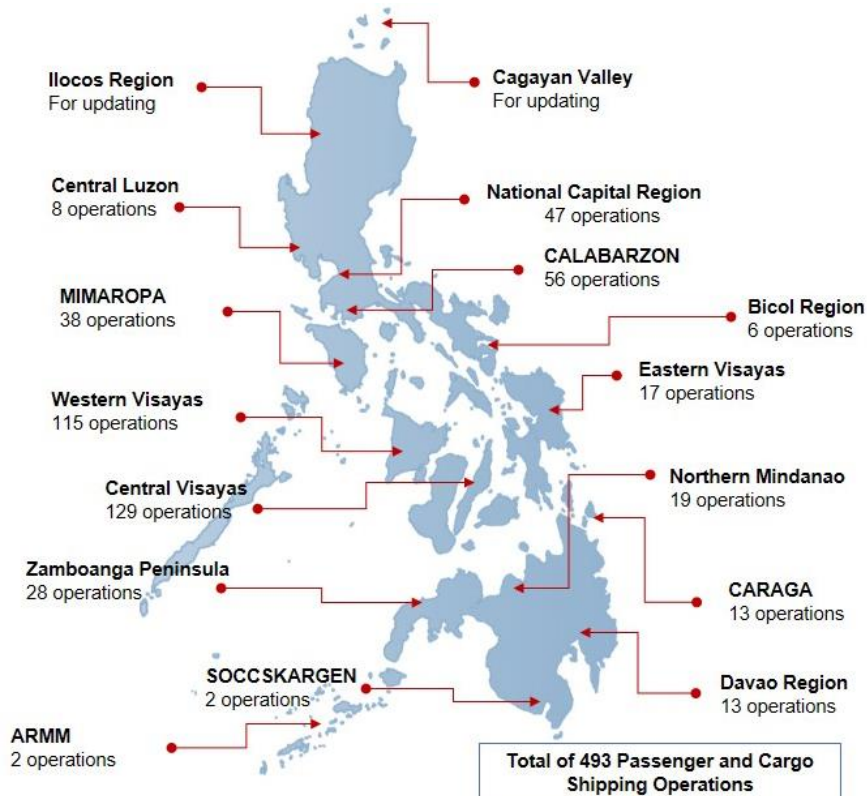
- Almost Forty-two percent (41.78%) of passenger and cargo shipping operations were completed in accordance with the ships' CPC.
- Fifty-eight percent (58%) of the shipping operations were affected due to the measures implemented in view Code Red Sublevel 2 for the COVID-19.
- Operations of passenger ships were more affected compared to cargo ships. 82.40% of the cargo shipping operations were completed under normal conditions compared to passenger ships at 27.99%.
- **With cargo shipping still operational, transport of goods amid Enhanced Community Quarantine is assured.**

### PASSENGER AND CARGO SHIPPING IN NUMBERS

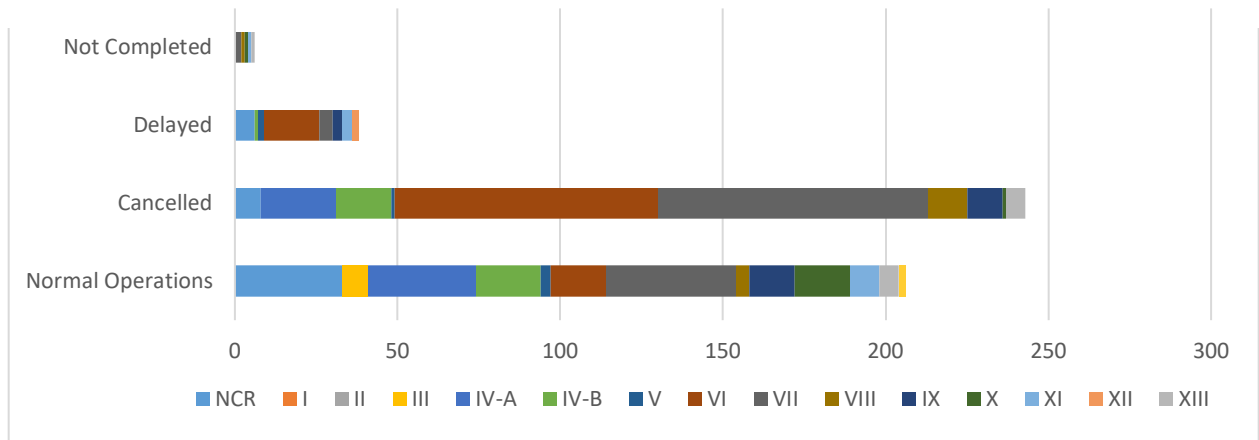
March 24 to March 25, 2020

- 493** Shipping Operations Recorded
- 368** Passenger Ships Operated
- 125** Cargo Ships Operated
- 206** Ships Operated Normally
- 243** Operations Cancelled
- 38** Operations Delayed
- 6** Operations Uncompleted

### PASSENGER AND CARGO SHIPPING OPERATIONS IN THE PHILIPPINES AMID CODE RED SUBLEVEL 2 FOR THE COVID-19



## I. STATUS OF SHIPPING OPERATIONS NATIONWIDE



On March 24 to 25, 2020, there were 493 passenger and cargo shipping operations conducted wherein 206 or 41.78% were completed in accordance with their Certificate of Public Convenience (CPC).

Out of the 206 operations completed under normal conditions, the reported movements were mostly in the Central Visayas Region at 19.42% followed by the NCR and Calabarzon Region both at 16%.

Meanwhile, 49% of the passenger and cargo shipping operations were cancelled, all due to the community quarantine measures imposed by the different local government units governing the ships' ports of destination. Mostly affected were operations in the Visayas, particularly in the central and western regions.

Thirty-eight (38) passenger and cargo ships or 7.71% encountered delays due to the additional measures adopted in view of COVID-19 such as temperature screening and inspections.

Lastly, one passenger and five cargo shipping operations were not completed at the time of reporting, mostly as respective ships were still underway.

## II. STATUS OF SHIPPING OPERATIONS BY CLASSIFICATION

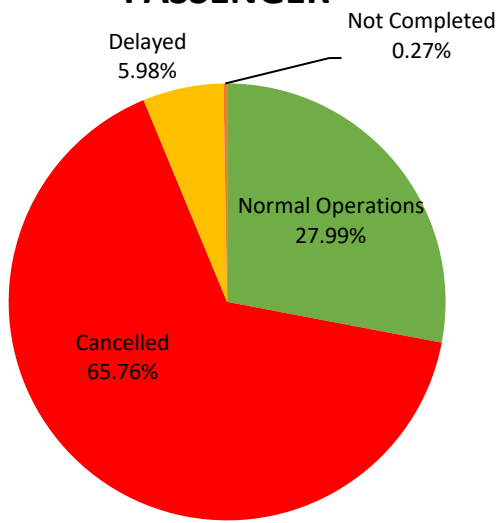
Region	Normal Operations		Cancelled		Delayed		Not Completed	
	Passenger	Cargo	Passenger	Cargo	Passenger	Cargo	Passenger	Cargo
<b>NCR</b>	7	26	8	0	0	6	0	0
<b>I</b>	0	0	0	0	0	0	0	0
<b>II</b>	0	0	0	0	0	0	0	0
<b>III</b>	0	8	0	0	0	0	0	0
<b>IV-A</b>	23	10	23	0	0	0	0	0
<b>IV-B</b>	16	4	17	0	1	0	0	0
<b>V</b>	3	0	1	0	2	0	0	0
<b>VI</b>	10	7	80	1	16	1	0	0
<b>VII</b>	21	19	83	0	2	2	0	2
<b>VIII</b>	0	4	12	0	0	0	0	1
<b>IX</b>	11	3	11	0	1	2	0	0
<b>X</b>	5	12	1	0	0	0	0	1
<b>XI</b>	0	9	0	0	0	3	0	1
<b>XII</b>	0	0	0	0	0	2	0	0
<b>XIII</b>	6	0	6	0	0	0	1	0
<b>ARMM</b>	1	1	0	0	0	0	0	0
<b>Total</b>	<b>103</b>	<b>103</b>	<b>242</b>	<b>1</b>	<b>22</b>	<b>16</b>	<b>1</b>	<b>5</b>

Amid the measures in place due to Code Red Sublevel 2 on COVID-19, 103 out of 125 (82.40%) cargo ships still operated normally - 39 are container ships, 7 general cargo ships, 9 LCT ships, 37 oil tankers, 8 RORO cargo ships and 3 other types.

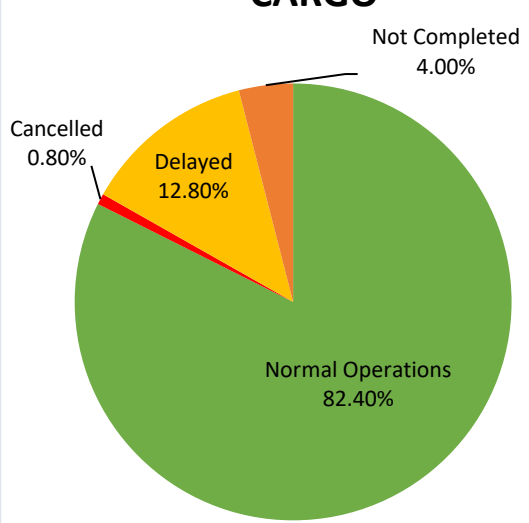
Only 3 out of the 103 or 3% of passenger ships which completed their operations carried passengers during their voyage. All of the 3 vessels are fast craft ferries, 2 of which operated in NCR and 1 in Central Visayas. 57 conventional passenger ships or 55% and 43 RoPax Ships or 42% also completed their operations but only carried cargoes during their voyage.

Meanwhile out of the 368 passenger ships, 72% were affected by the measures adopted in view of COVID-19. These measures caused either the cancellation, delay or uncompleted operations of 265 passenger ships.

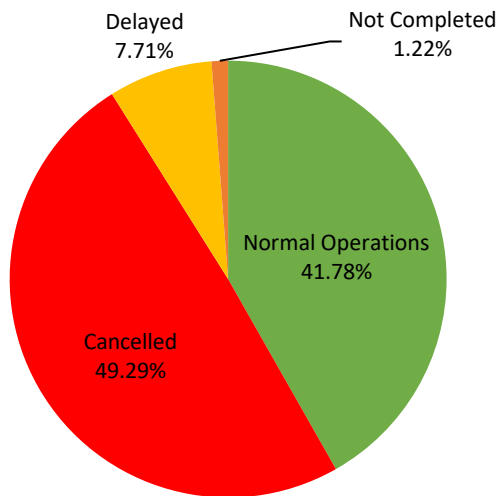
### PASSENGER



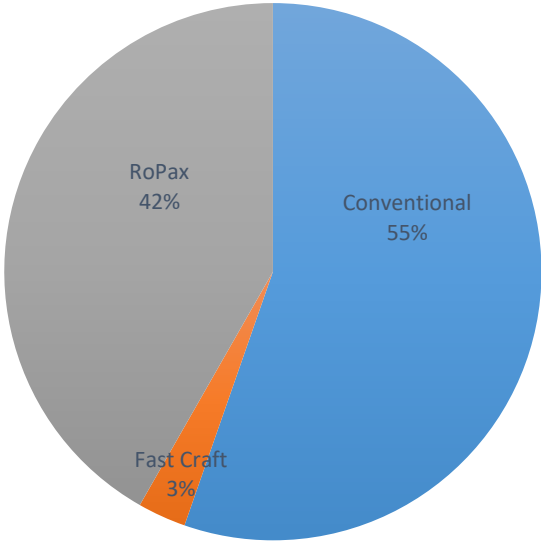
### CARGO



### PASSENGER AND CARGO



### Passenger Ship Types under Normal Operations



### Cargo Ship Types under Normal Operations

