



**MARITIME INDUSTRY AUTHORITY  
WEEKLY SUMMARY SITUATION REPORT - Summary 73**

Passenger and Cargo Shipping Operations on August 06 - 12, 2021  
in areas under MGCQ and GCQ

*Data generated on August 06 - 12, 2021, 3:00 PM*

**HIGHLIGHTS**

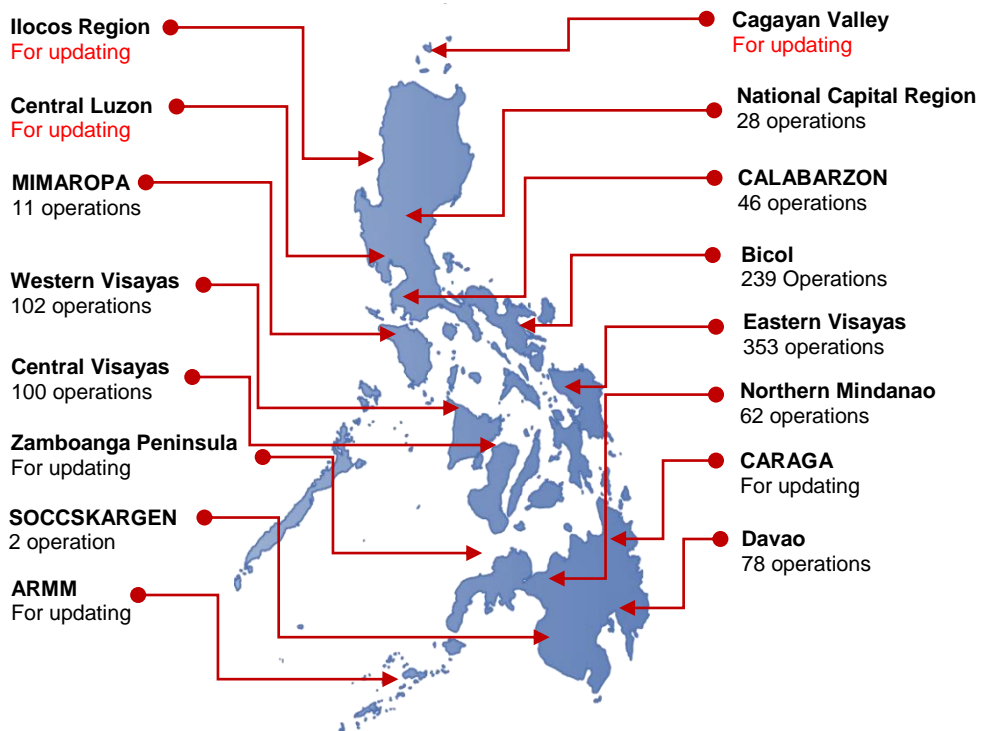
- Ninety percent (90%) of passenger and cargo shipping operations were completed in accordance with the ships' CPC.
- Ten percent (10%) of the shipping operations were affected due to the measures implemented in view Code Red Sublevel 2 for the COVID-19.
- Operations of passenger ships were more affected compared to cargo ships. 100% of the cargo shipping operations were completed under normal conditions compared to passenger ships at 75%.
- Daily average passenger and cargo ship operations are 236 completed under normal conditions, 20 cancelled trips, 7 delayed and 0 not completed voyage.
- **With cargo shipping still operational, transport of goods amid MGCQ, and GCQ is assured.**

**PASSENGER AND CARGO SHIPPING IN NUMBERS**

August 06 - 12, 2021

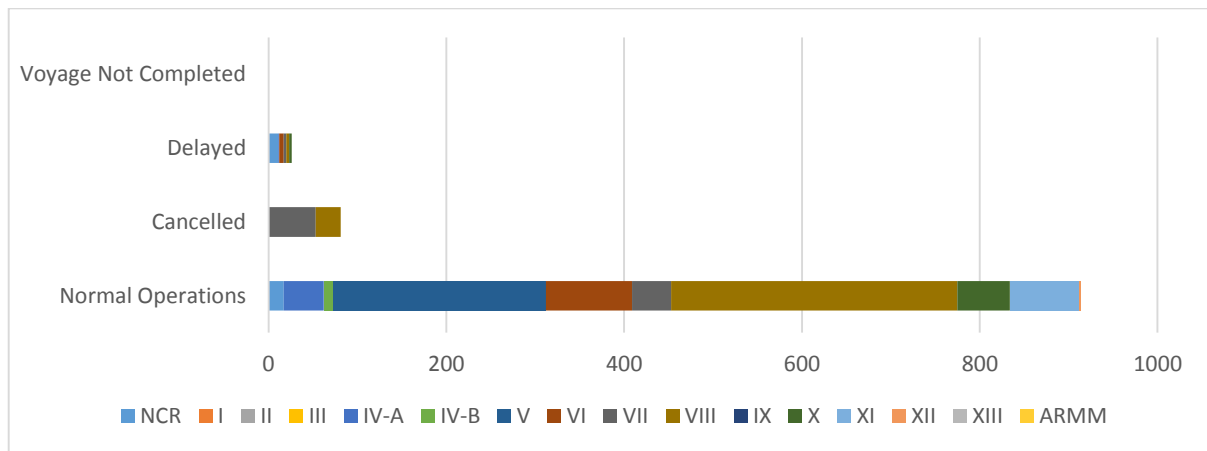
- 1021** Shipping Operations Recorded
- 418** Passenger Ships Operated
- 603** Cargo Ships Operated
- 914** Ships Operated Normally
- 81** Operations Cancelled
- 26** Operations Delayed
- 0** Operation Uncompleted

**PASSENGER AND CARGO SHIPPING OPERATIONS IN THE PHILIPPINES  
IN AREAS UNDER MGCQ and GCQ**



**Total of 1021 Passenger and Cargo Shipping Operations**

## I. STATUS OF SHIPPING OPERATIONS NATIONWIDE



On August 06 - 12, 2021, there were 1021 passenger and cargo shipping operations conducted wherein 914 or 90% were completed in accordance with their Certificate of Public Convenience (CPC).

Out of the 914 operations completed under normal conditions, the reported movements were mostly in the Eastern Visayas Region at 35% and Bicol Region at 26%.

Meanwhile, 8% of the passenger and cargo shipping operations were cancelled, all due to the community quarantine measures imposed by the different local government units governing the ships' ports of destination. Mostly affected were operations in the Central Visayas and Eastern Visayas Regions.

Twenty-Five (25) passenger ships or 6% encountered delays due to the additional measures adopted in view of COVID-19 such as temperature screening and inspections.

Lastly, no shipping operations were not completed at the time of reporting, as the respective ships were still underway.

## II. STATUS OF SHIPPING OPERATIONS BY CLASSIFICATION

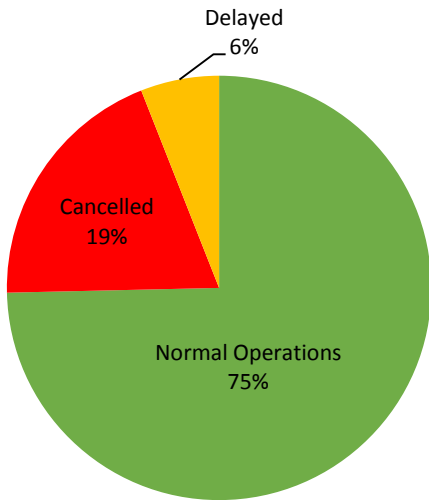
Region	Normal Operations		Cancelled		Delayed		Not Completed	
	Passenger	Cargo	Passenger	Cargo	Passenger	Cargo	Passenger	Cargo
<b>NCR</b>	11	6	-	-	11	-	-	-
<b>I</b>	-	-	-	-	-	-	-	-
<b>II</b>	-	-	-	-	-	-	-	-
<b>III</b>	-	-	-	-	-	-	-	-
<b>IV-A</b>	45	-	-	-	1	-	-	-
<b>IV-B</b>	10	1	-	-	-	-	-	-
<b>V</b>	32	207	-	-	-	-	-	-
<b>VI</b>	34	63	-	-	4	1	-	-
<b>VII</b>	2	42	53	-	3	-	-	-
<b>VIII</b>	163	159	28	-	3	-	-	-
<b>IX</b>	-	-	-	-	-	-	-	-
<b>X</b>	1	58	-	-	3	-	-	-
<b>XI</b>	14	64	-	-	-	-	-	-
<b>XII</b>	-	2	-	-	-	-	-	-
<b>XIII</b>	-	-	-	-	-	-	-	-
<b>ARMM</b>	-	-	-	-	-	-	-	-
<b>Total</b>	312	602	81	-	25	1	-	-

Amid the measures in place due to MGCQ, and GCQ, 602 out of 603 (100%) cargo ships still operated normally – are 47 bulk carrier, 17 container ships, 20 general cargo ships, 140 LCT ships, 5 oil tankers, 368 Roro cargo ships.

Three-hundred twelve (312) passenger ships completed their voyage – 210 conventional passenger ships, 88 RoPax ships and 14 fast craft ferry completed their operations but mostly only carried cargoes during their voyage.

Meanwhile out of the 418 passenger ships, 25% were affected by the measures adopted in view of COVID-19. These measures caused either the cancellation, delay, or uncompleted operations of 106 passenger ships.

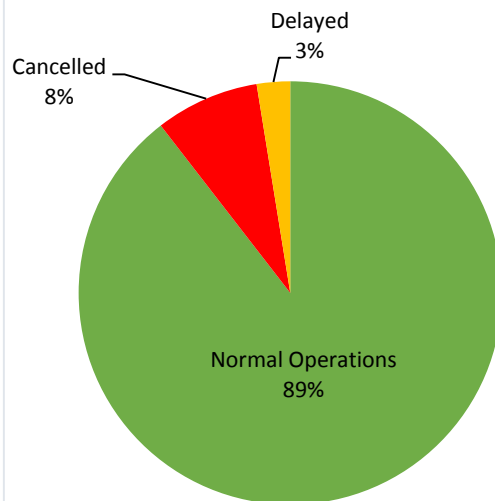
### PASSENGER Ship Operations



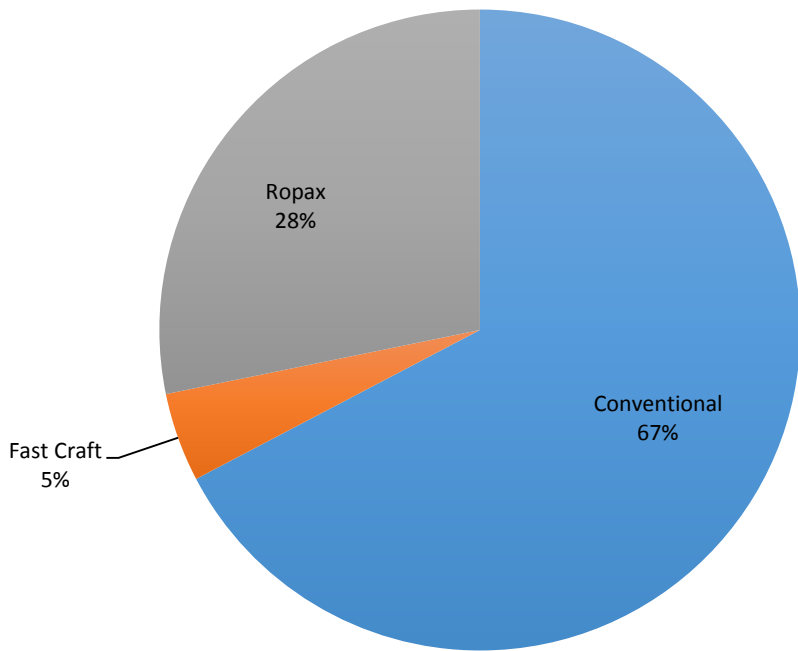
### CARGO Ship Operations



### PASSENGER and CARGO Ship Operations



### Passenger Ship Types under Normal Operations



### Cargo Ship Types under Normal Operations

