



MARITIME INDUSTRY AUTHORITY
WEEKLY SUMMARY SITUATION REPORT - Summary 84
 Passenger and Cargo Shipping Operations on Oct 22 - 28, 2021
 in areas under MGCQ and GCQ
Data generated on Oct 22 - 28, 2021, 3:00 PM

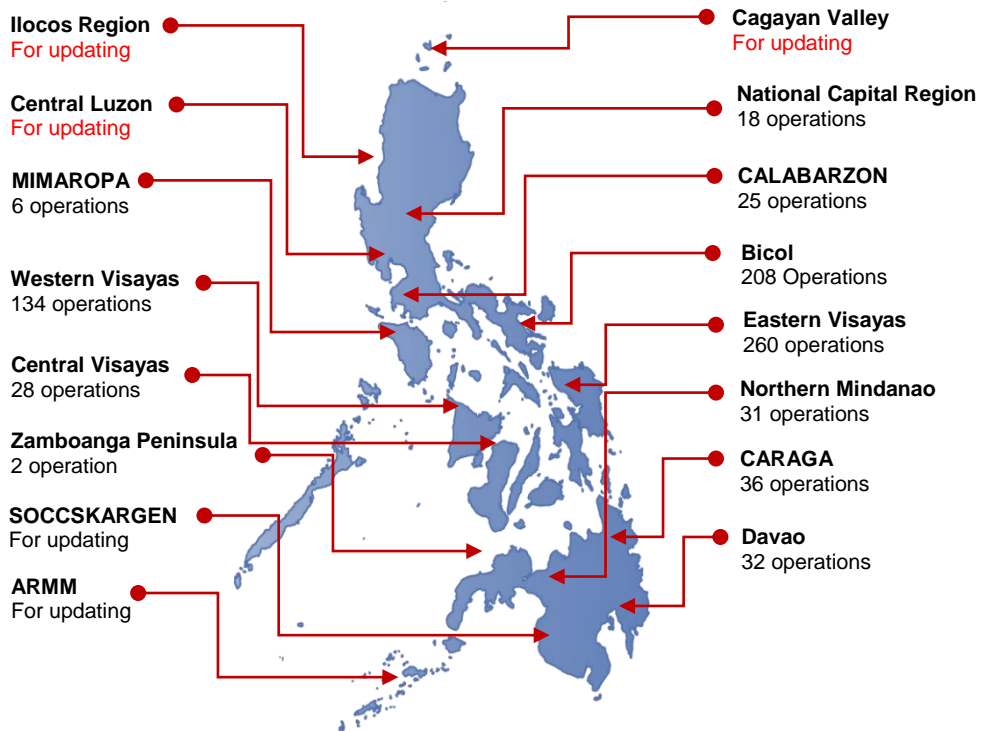
HIGHLIGHTS

- Ninety-three percent (93%) of passenger and cargo shipping operations were completed in accordance with the ships' CPC.
- Seven percent (7%) of the shipping operations were affected due to the measures implemented in view Code Red Sublevel 2 for the COVID-19.
- Operations of passenger ships were more affected compared to cargo ships. 100% of the cargo shipping operations were completed under normal conditions compared to passenger ships at 82%.
- Daily average passenger and cargo ship operations are 182 completed under normal conditions, 9 cancelled trips, 4 delayed and 0 not completed voyage.
- **With cargo shipping still operational, transport of goods amid MGCQ, and GCQ is assured.**

PASSENGER AND CARGO SHIPPING IN NUMBERS
 Oct 22 - 28, 2021

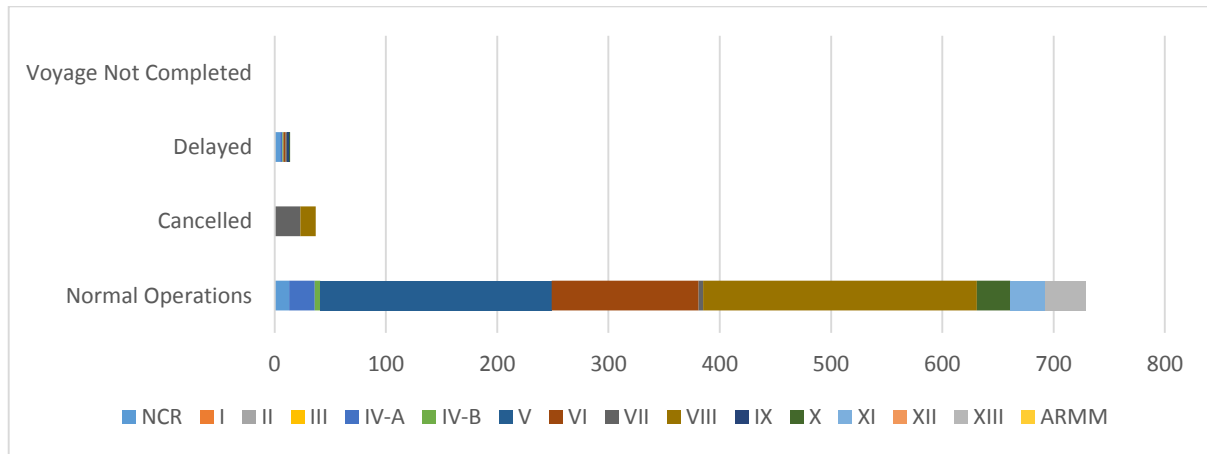
- 780** Shipping Operations Recorded
- 279** Passenger Ships Operated
- 501** Cargo Ships Operated
- 729** Ships Operated Normally
- 37** Operations Cancelled
- 14** Operations Delayed
- 0** Operation Uncompleted

**PASSENGER AND CARGO SHIPPING OPERATIONS IN THE PHILIPPINES
 IN AREAS UNDER MGCQ and GCQ**



Total of 780 Passenger and Cargo Shipping Operations

I. STATUS OF SHIPPING OPERATIONS NATIONWIDE



On Oct 22 - 28, 2021, there were 780 passenger and cargo shipping operations conducted wherein 729 or 93% were completed in accordance with their Certificate of Public Convenience (CPC).

Out of the 729 operations completed under normal conditions, the reported movements were mostly in the Eastern Visayas Region at 34% and Bicol Region at 29%.

Meanwhile, 5% of the passenger and cargo shipping operations were cancelled, all due to the community quarantine measures imposed by the different local government units governing the ships' ports of destination. Mostly affected were operations in the Central Visayas and Eastern Visayas Regions.

Fourteen (14) passenger ships or 5% encountered delays due to the additional measures adopted in view of COVID-19 such as temperature screening and inspections.

Lastly, no shipping operations were not completed at the time of reporting, as the respective ships were still underway.

II. STATUS OF SHIPPING OPERATIONS BY CLASSIFICATION

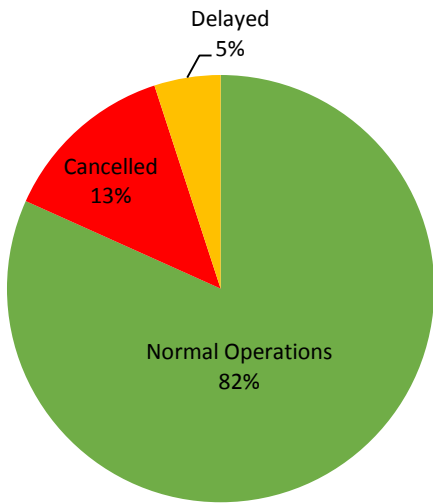
Region	Normal Operations		Cancelled		Delayed		Not Completed	
	Passenger	Cargo	Passenger	Cargo	Passenger	Cargo	Passenger	Cargo
NCR	13	-	-	-	5	-	-	-
I	-	-	-	-	-	-	-	-
II	-	-	-	-	-	-	-	-
III	-	-	-	-	-	-	-	-
IV-A	23	-	-	-	2	-	-	-
IV-B	5	-	-	-	1	-	-	-
V	27	181	-	-	-	-	-	-
VI	41	91	-	-	2	-	-	-
VII	2	2	23	-	1	-	-	-
VIII	110	136	14	-	-	-	-	-
IX	-	-	-	-	2	-	-	-
X	-	30	-	-	1	-	-	-
XI	5	27	-	-	-	-	-	-
XII	-	-	-	-	-	-	-	-
XIII	2	34	-	-	-	-	-	-
ARMM	-	-	-	-	-	-	-	-
Total	228	501	37	-	14	-	-	-

Amid the measures in place due to MGCQ, and GCQ, 501 out of 501 (100%) cargo ships still operated normally – are 38 bulk carrier, 9 container ships, 4 general cargo ships, 63 LCT ships, 373 Roro cargo ships.

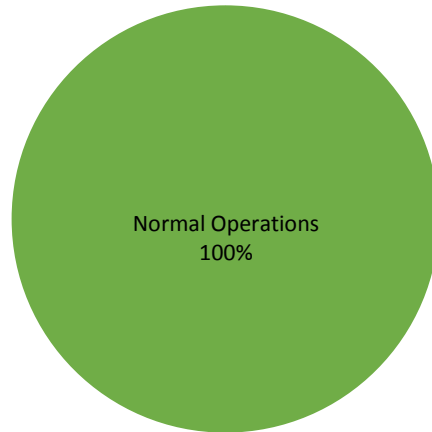
Two-hundred twenty eight (228) passenger ships completed their voyage – 123 conventional passenger ships, 75 RoPax ships and 30 fast craft ferry completed their operations but mostly only carried cargoes during their voyage.

Meanwhile out of the 279 passenger ships, 18% were affected by the measures adopted in view of COVID-19. These measures caused either the cancellation, delay, or uncompleted operations of 51 passenger ships.

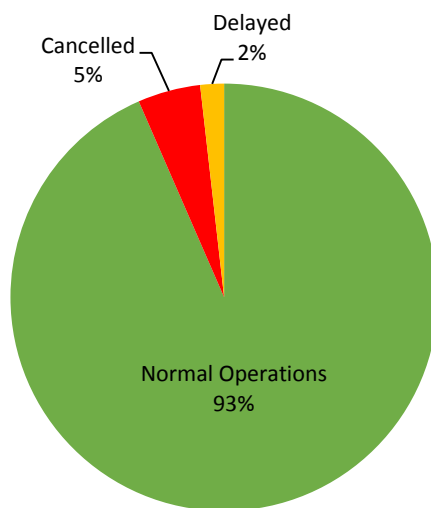
PASSENGER Ship Operations



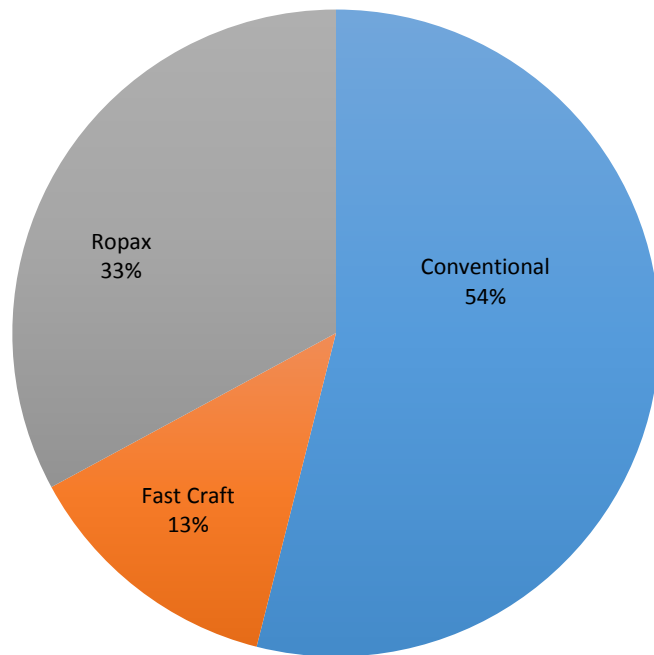
CARGO Ship Operations



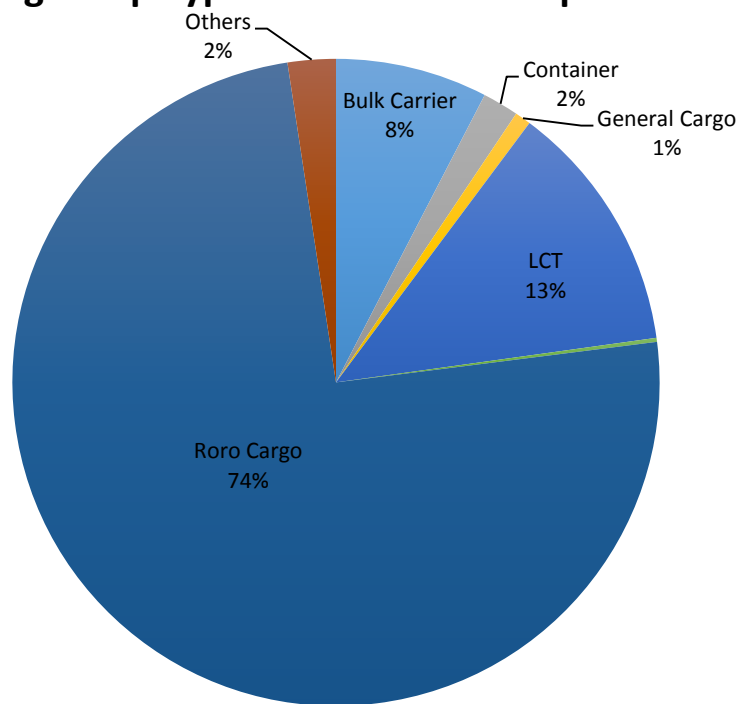
PASSENGER and CARGO Ship Operations



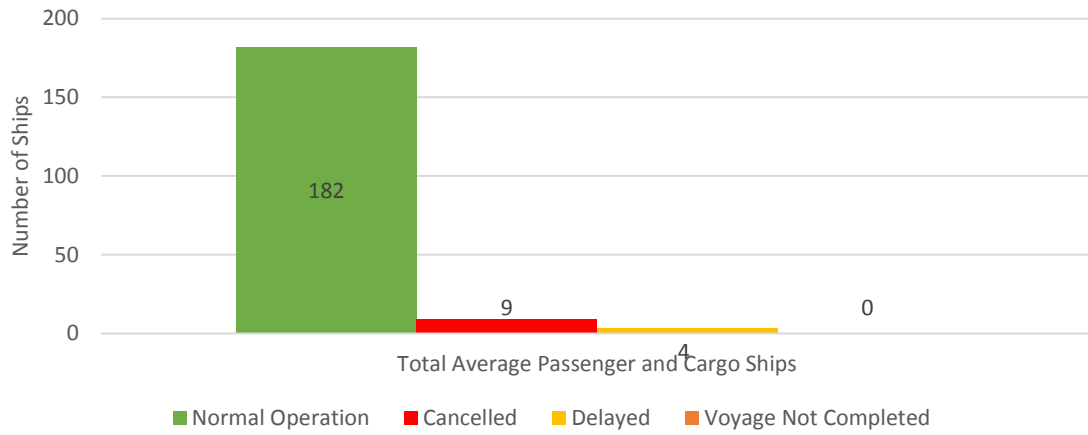
Passenger Ship Types under Normal Operations



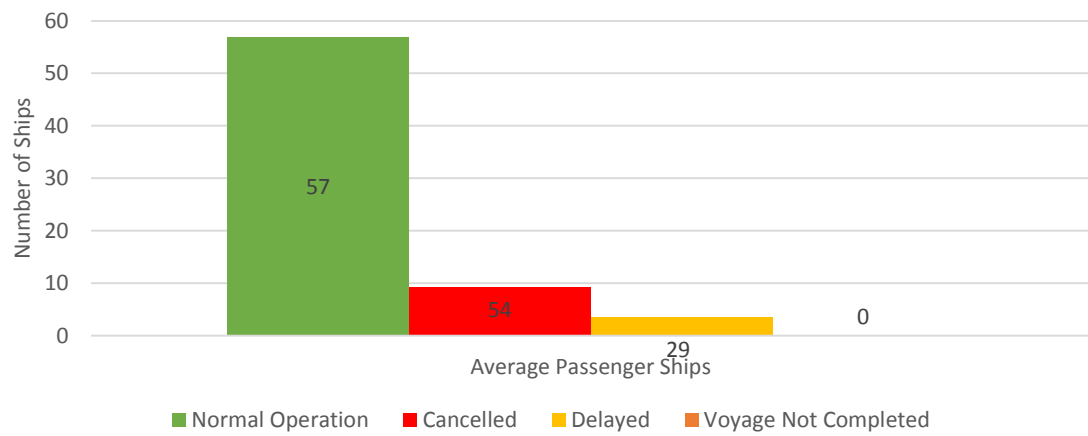
Cargo Ship Types under Normal Operations



Daily Average Passenger and Cargo Ship Operation



Daily Average Passenger Ship Operation



Daily Average Cargo Ship Operation

