



**MARITIME INDUSTRY AUTHORITY
WEEKLY SUMMARY SITUATION REPORT - Summary 89**

Passenger and Cargo Shipping Operations on NOV. 26 - DEC 02, 2021
in areas under MGCQ and GCQ

Data generated on NOV. 26 - DEC 02, 2021, 3:00 PM

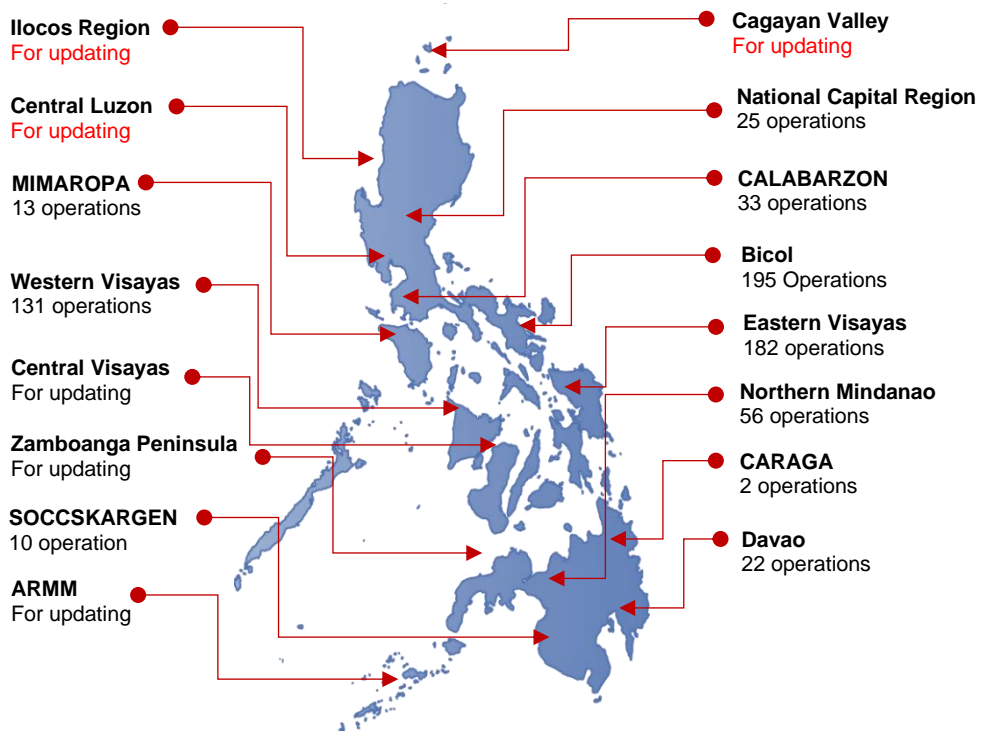
HIGHLIGHTS

- Ninety-seven percent (97%) of passenger and cargo shipping operations were completed in accordance with the ships' CPC.
- Three percent (3%) of the shipping operations were affected due to the measures implemented in view Code Red Sublevel 2 for the COVID-19.
- Operations of passenger ships were more affected compared to cargo ships. 100% of the cargo shipping operations were completed under normal conditions compared to passenger ships at 89%.
- Daily average passenger and cargo ship operations are 164 completed under normal conditions, 2 cancelled trips, 4 delayed and 0 not completed voyage.
- **With cargo shipping still operational, transport of goods amid MGCQ, and GCQ is assured.**

**PASSENGER AND CARGO
SHIPPING IN NUMBERS**
NOV. 26 - DEC 02, 2021

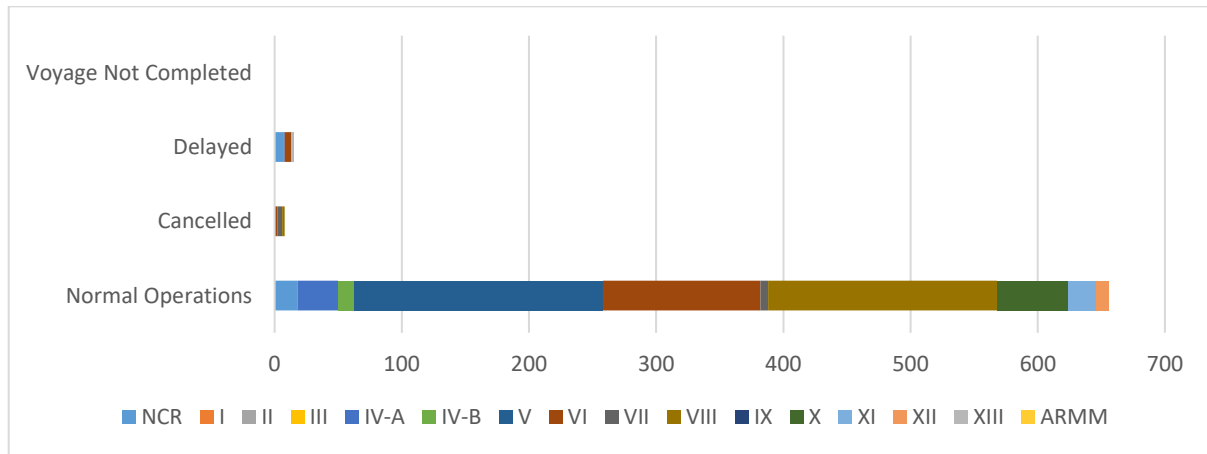
- 679** Shipping Operations Recorded
- 216** Passenger Ships Operated
- 463** Cargo Ships Operated
- 656** Ships Operated Normally
- 8** Operations Cancelled
- 15** Operations Delayed
- 0** Operation Uncompleted

**PASSENGER AND CARGO SHIPPING OPERATIONS IN THE PHILIPPINES
IN AREAS UNDER MGCQ and GCQ**



**Total of 679 Passenger and Cargo
Shipping Operations**

I. STATUS OF SHIPPING OPERATIONS NATIONWIDE



On NOV. 26 - DEC 02, 2021, there were 679 passenger and cargo shipping operations conducted wherein 656 or 97% were completed in accordance with their Certificate of Public Convenience (CPC).

Out of the 656 operations completed under normal conditions, the reported movements were mostly in the Bicol Region at 30% and Eastern Visayas Region at 27%.

Meanwhile, 1% of the passenger and cargo shipping operations were cancelled, all due to the community quarantine measures imposed by the different local government units governing the ships' ports of destination. Mostly affected were operations in the Central Visayas and Eastern Visayas Regions.

Fifteen (15) passenger ships or 7% encountered delays due to the additional measures adopted in view of COVID-19 such as temperature screening and inspections.

Lastly, no shipping operations were not completed at the time of reporting, as the respective ships were still underway.

II. STATUS OF SHIPPING OPERATIONS BY CLASSIFICATION

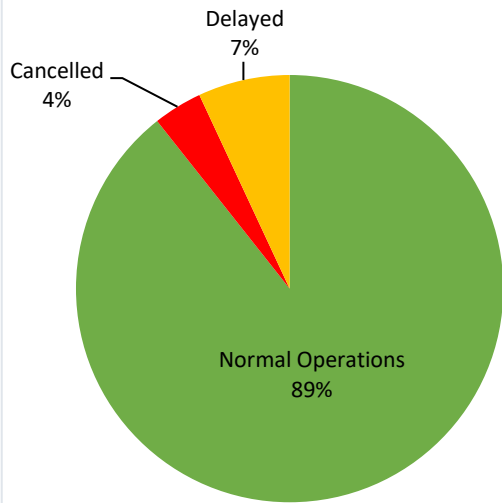
Region	Normal Operations		Cancelled		Delayed		Not Completed	
	Passenger	Cargo	Passenger	Cargo	Passenger	Cargo	Passenger	Cargo
NCR	8	10	-	-	7	-	-	-
I	-	-	-	-	-	-	-	-
II	-	-	-	-	-	-	-	-
III	-	-	-	-	-	-	-	-
IV-A	30	2	-	-	1	-	-	-
IV-B	13	-	-	-	-	-	-	-
V	23	172	-	-	-	-	-	-
VI	45	79	2	-	5	-	-	-
VII	-	6	4	-	-	-	-	-
VIII	72	108	2	-	-	-	-	-
IX	-	-	-	-	-	-	-	-
X	2	54	-	-	-	-	-	-
XI	-	22	-	-	-	-	-	-
XII	-	10	-	-	-	-	-	-
XIII	-	-	-	-	2	-	-	-
ARMM	-	-	-	-	-	-	-	-
Total	193	463	8	-	15	-	-	-

Amid the measures in place due to MGCQ, and GCQ, 463 out of 463 (100%) cargo ships still operated normally – are 24 bulk carrier, 28 container ships, 8 general cargo ships, 50 LCT ships, 337 Roro cargo ships.

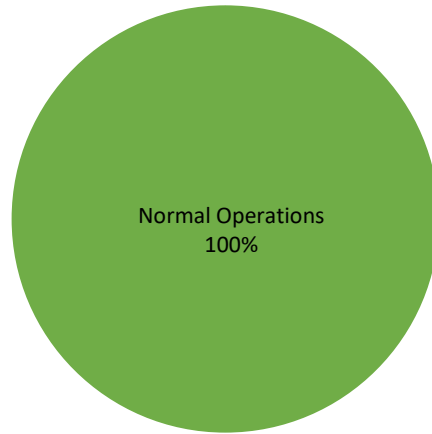
One-hundred ninety three (193) passenger ships completed their voyage – 101 conventional passenger ships, 60 RoPax ships and 29 fast craft ferry completed their operations but mostly only carried cargoes during their voyage.

Meanwhile out of the 216 passenger ships, 11% were affected by the measures adopted in view of COVID-19. These measures caused either the cancellation, delay, or uncompleted operations of 23 passenger ships.

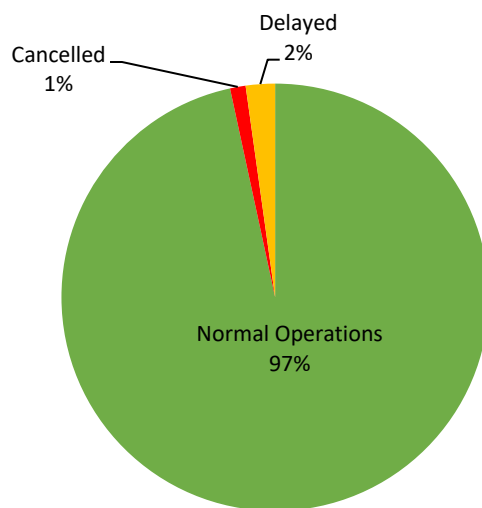
PASSENGER Ship Operations



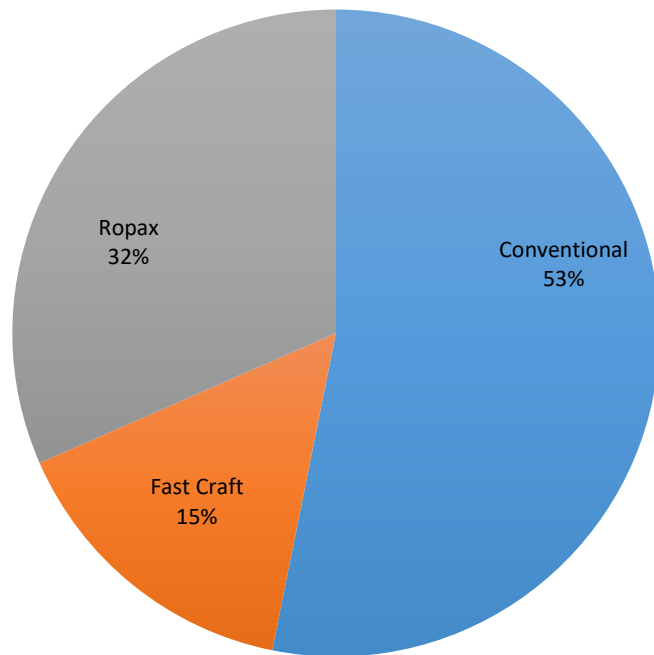
CARGO Ship Operations



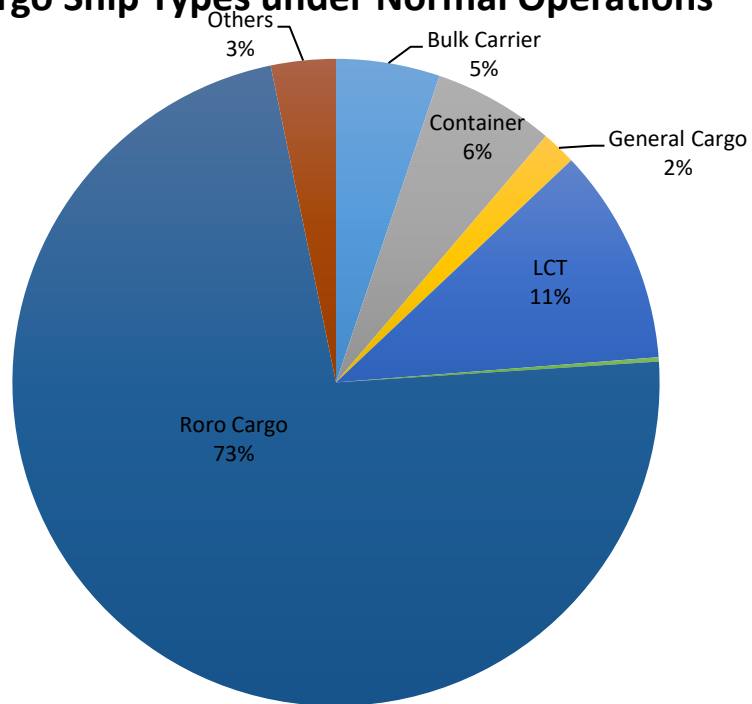
PASSENGER and CARGO Ship Operations



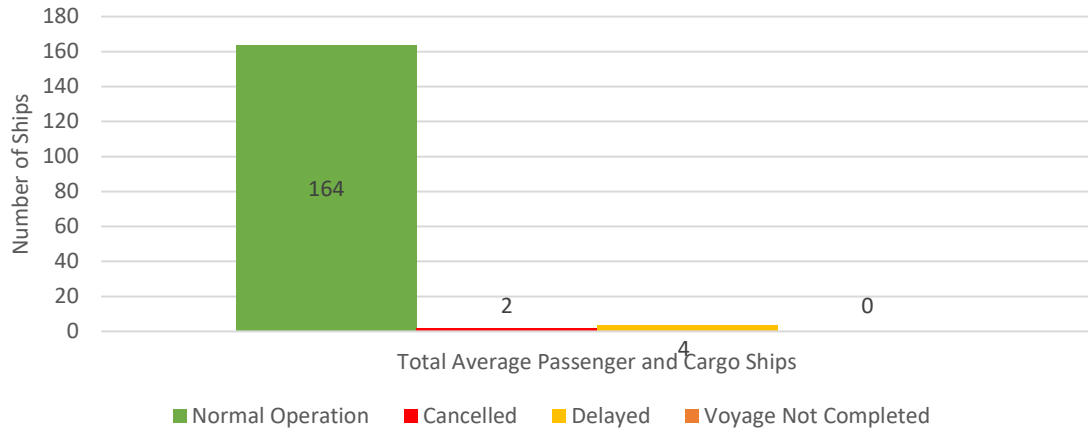
Passenger Ship Types under Normal Operations



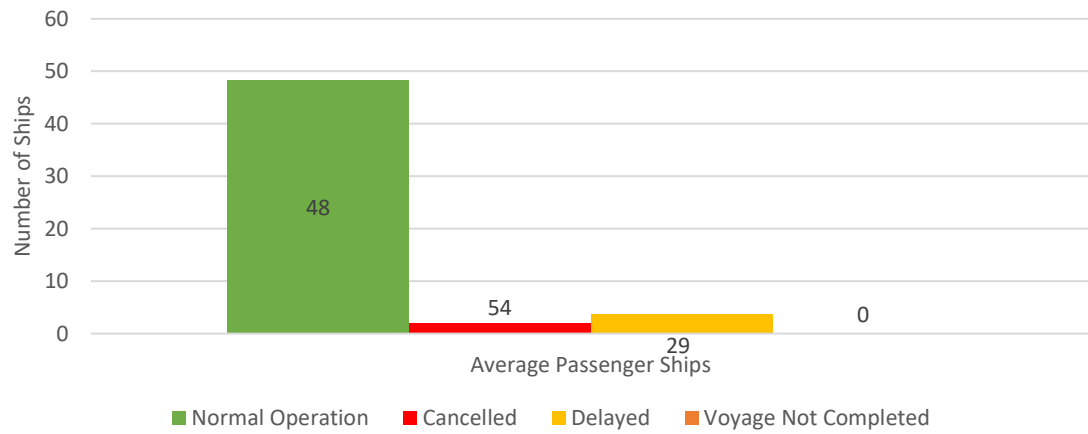
Cargo Ship Types under Normal Operations



Daily Average Passenger and Cargo Ship Operation



Daily Average Passenger Ship Operation



Daily Average Cargo Ship Operation

