



MARITIME INDUSTRY AUTHORITY
WEEKLY SUMMARY SITUATION REPORT - Summary 93
 Passenger and Cargo Shipping Operations on Dec 24 - 30, 2021
 in areas under MGCQ and GCQ

Data generated on Dec 24 - 30, 2021, 3:00 PM

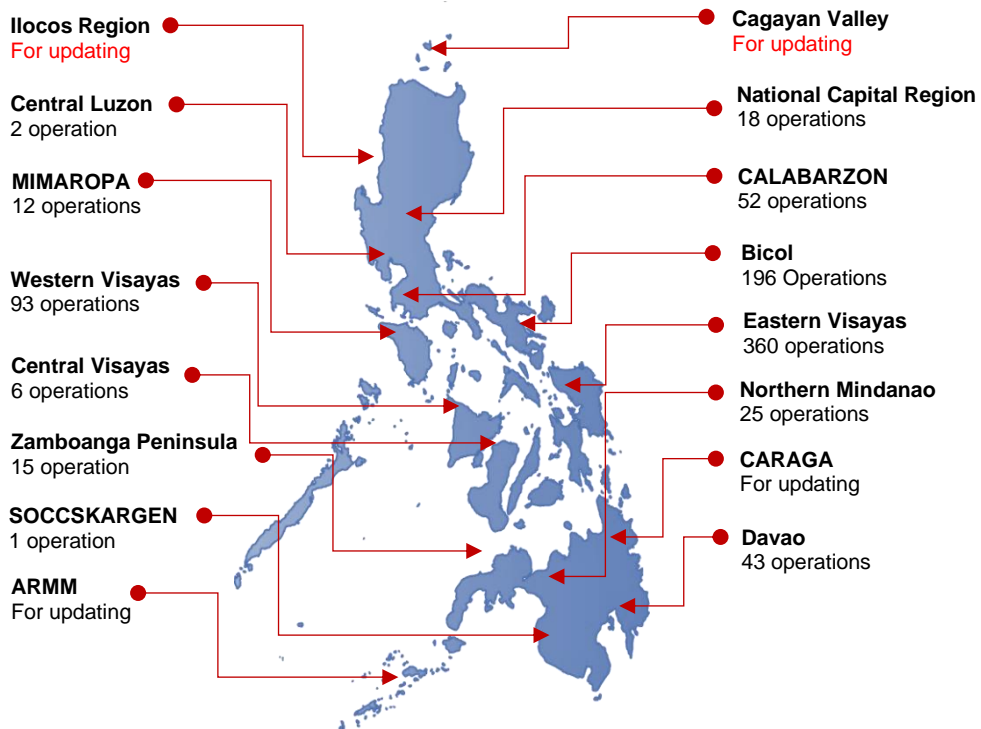
HIGHLIGHTS

- Ninety-seven percent (97%) of passenger and cargo shipping operations were completed in accordance with the ships' CPC.
- Three percent (3%) of the shipping operations were affected due to the measures implemented in view Code Red Sublevel 2 for the COVID-19.
- Operations of passenger ships were more affected compared to cargo ships. 100% of the cargo shipping operations were completed under normal conditions compared to passenger ships at 93%.
- Daily average passenger and cargo ship operations are 200 completed under normal conditions, 0 cancelled trips, 6 delayed and 0 not completed voyage.
- **With cargo shipping still operational, transport of goods amid MGCQ, and GCQ is assured.**

PASSENGER AND CARGO SHIPPING IN NUMBERS
Dec 24 - 30, 2021

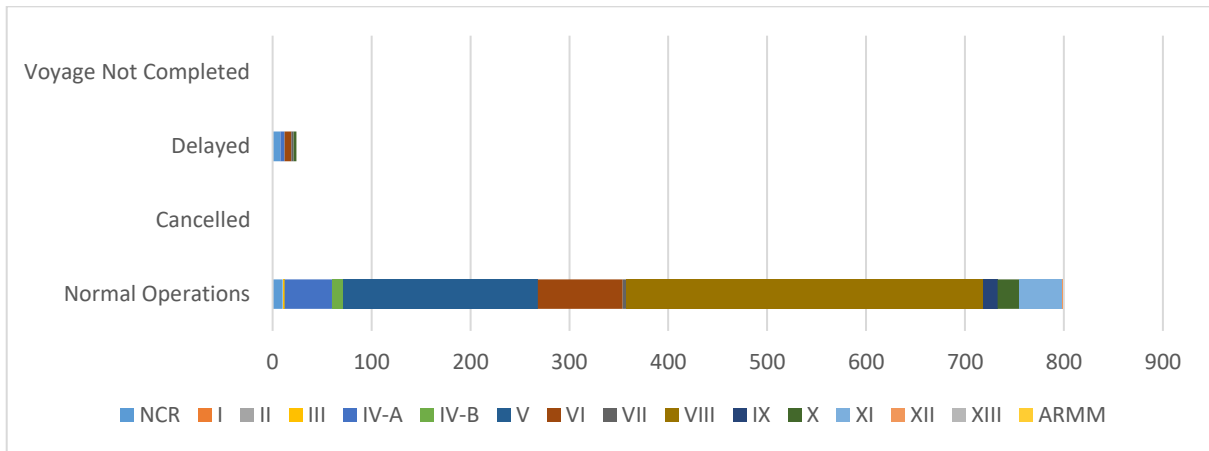
- 823** Shipping Operations Recorded
- 323** Passenger Ships Operated
- 500** Cargo Ships Operated
- 799** Ships Operated Normally
- 0** Operations Cancelled
- 24** Operations Delayed
- 0** Operation Uncompleted

**PASSENGER AND CARGO SHIPPING OPERATIONS IN THE PHILIPPINES
 IN AREAS UNDER MGCQ and GCQ**



Total of 823 Passenger and Cargo Shipping Operations

I. STATUS OF SHIPPING OPERATIONS NATIONWIDE



On Dec 24 - 30, 2021, there were 823 passenger and cargo shipping operations conducted wherein 799 or 97% were completed in accordance with their Certificate of Public Convenience (CPC).

Out of the 799 operations completed under normal conditions, the reported movements were mostly in the Eastern Visayas Region at 45% and Bicol Region at 25%.

Twenty-four (24) passenger ships or 7% encountered delays due to the additional measures adopted in view of COVID-19 such as temperature screening and inspections.

Lastly, no shipping operations were not completed at the time of reporting, as the respective ships were still underway.

II. STATUS OF SHIPPING OPERATIONS BY CLASSIFICATION

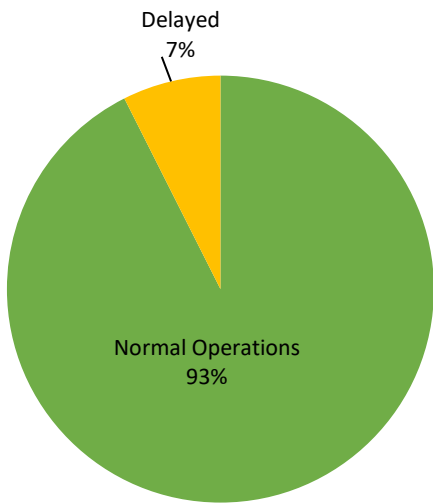
Region	Normal Operations		Cancelled		Delayed		Not Completed	
	Passenger	Cargo	Passenger	Cargo	Passenger	Cargo	Passenger	Cargo
NCR	6	4	-	-	8	-	-	-
I	-	-	-	-	-	-	-	-
II	-	-	-	-	-	-	-	-
III	-	2	-	-	-	-	-	-
IV-A	48	-	-	-	4	-	-	-
IV-B	12	-	-	-	-	-	-	-
V	39	157	-	-	-	-	-	-
VI	41	45	-	-	7	-	-	-
VII	-	4	-	-	2	-	-	-
VIII	148	212	-	-	-	-	-	-
IX	1	14	-	-	-	-	-	-
X	-	22	-	-	3	-	-	-
XI	4	39	-	-	-	-	-	-
XII	-	1	-	-	-	-	-	-
XIII	-	-	-	-	-	-	-	-
ARMM	-	-	-	-	-	-	-	-
Total	299	500	-	-	24	-	-	-

Amid the measures in place due to MGCQ, and GCQ, 500 out of 500 (100%) cargo ships still operated normally – are 36 bulk carrier, 15 container ships, 9 general cargo ships, 36 LCT ships, 6 oil tankers, 398 Roro cargo ships.

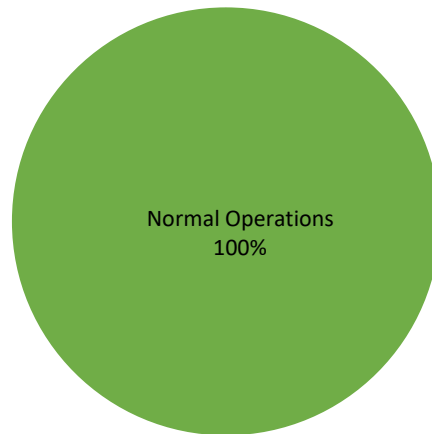
Two hundred ninety-nine (299) passenger ships completed their voyage – 207 conventional passenger ships, 56 RoPax ships and 36 fast craft ferry completed their operations but mostly only carried cargoes during their voyage.

Meanwhile out of the 323 passenger ships, 7% were affected by the measures adopted in view of COVID-19. These measures caused either the cancellation, delay, or uncompleted operations of 24 passenger ships.

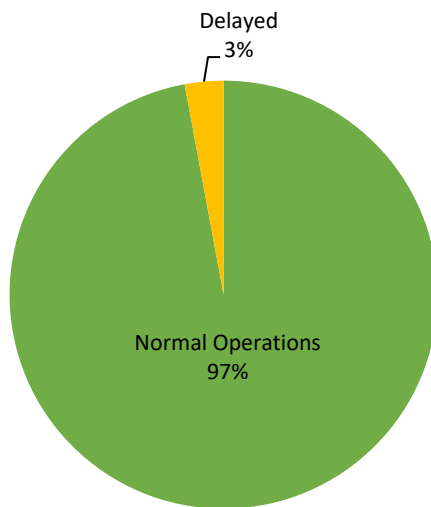
PASSENGER Ship Operations



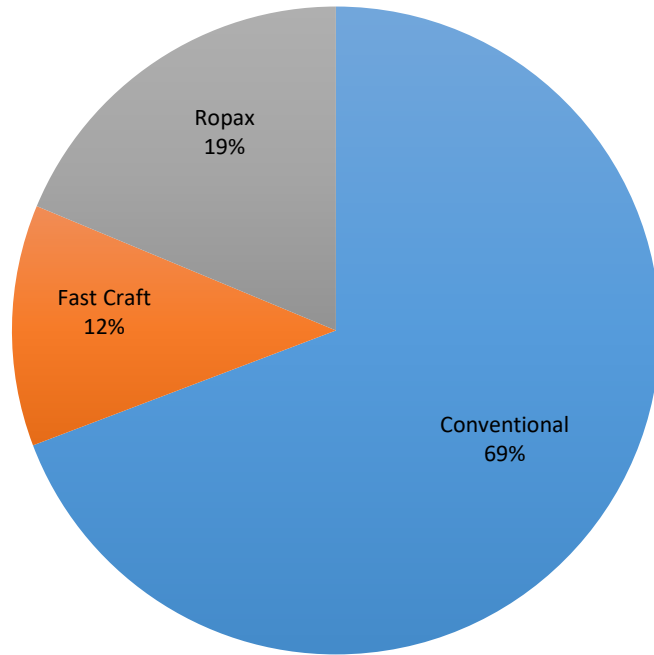
CARGO Ship Operations



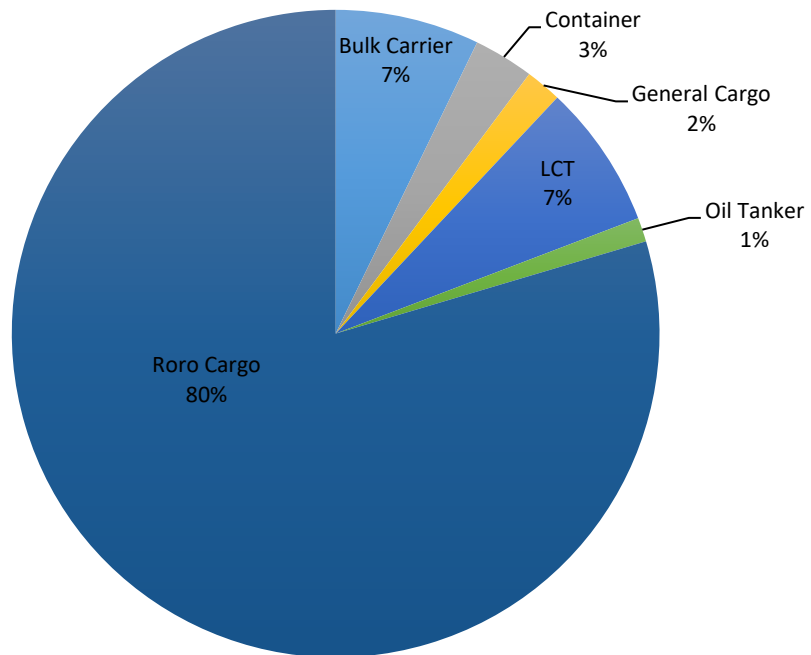
PASSENGER and CARGO Ship Operations



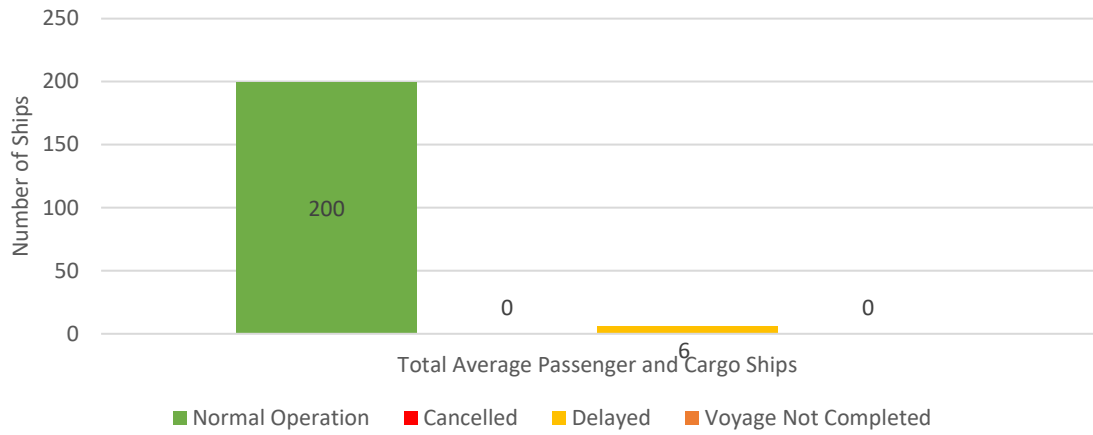
Passenger Ship Types under Normal Operations



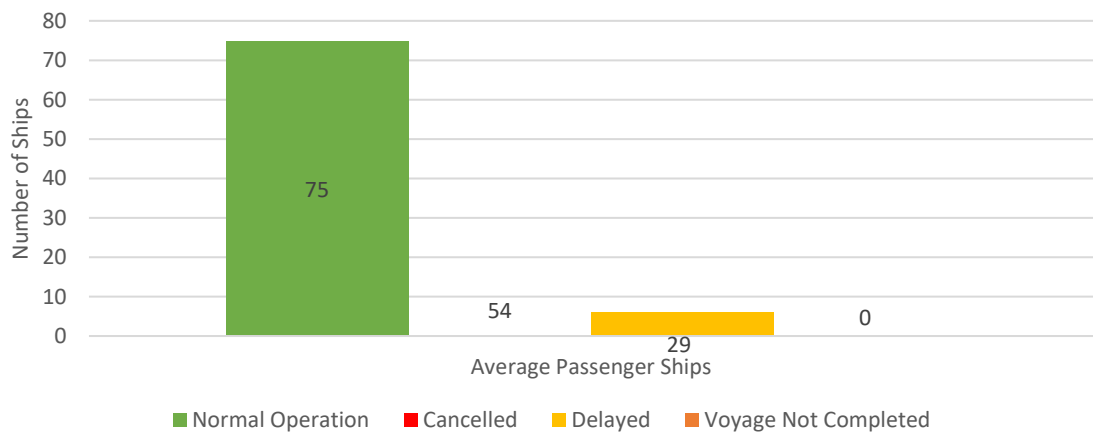
Cargo Ship Types under Normal Operations



Daily Average Passenger and Cargo Ship Operation



Daily Average Passenger Ship Operation



Daily Average Cargo Ship Operation

