



MARITIME INDUSTRY AUTHORITY
WEEKLY SUMMARY SITUATION REPORT - Summary 95
 Passenger and Cargo Shipping Operations on Jan. 07-13, 2022
 in areas under MGCQ and GCQ
Data generated on Jan. 07-13, 2022, 3:00 PM

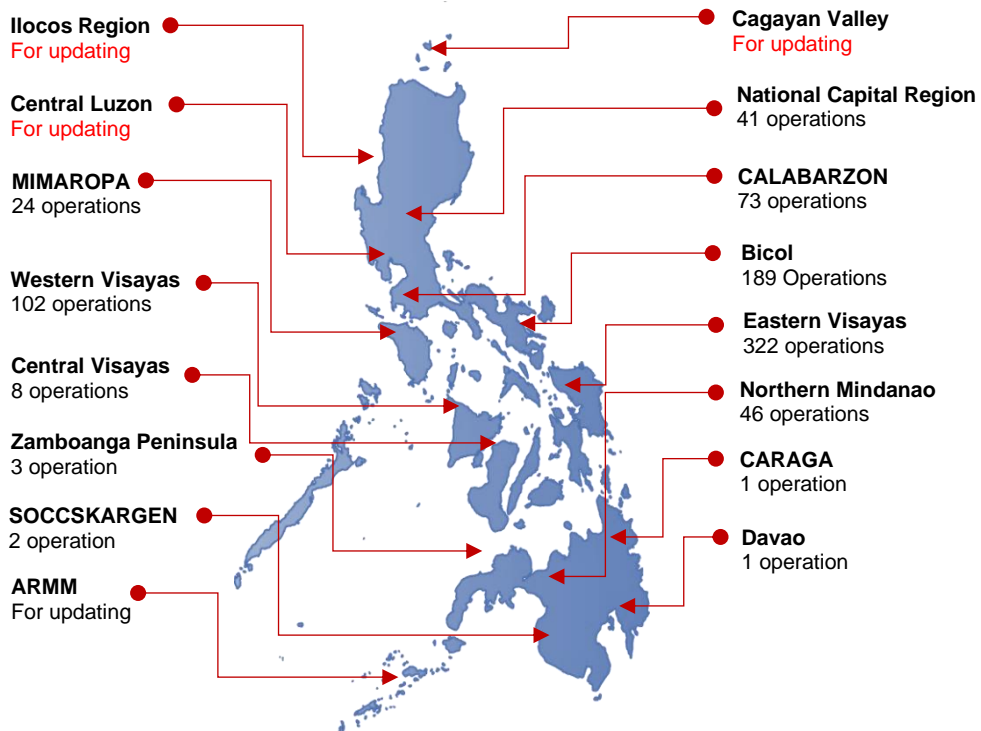
HIGHLIGHTS

- Ninety-Eight percent (98%) of passenger and cargo shipping operations were completed in accordance with the ships' CPC.
- Two percent (2%) of the shipping operations were affected due to the measures implemented in view Code Red Sublevel 2 for the COVID-19.
- Operations of passenger ships were more affected compared to cargo ships. 100% of the cargo shipping operations were completed under normal conditions compared to passenger ships at 95%.
- Daily average passenger and cargo ship operations are 199 completed under normal conditions, 0 cancelled trips, 4 delayed and 0 not completed voyage.
- **With cargo shipping still operational, transport of goods amid MGCQ, and GCQ is assured.**

PASSENGER AND CARGO SHIPPING IN NUMBERS
 Jan. 07-13, 2022

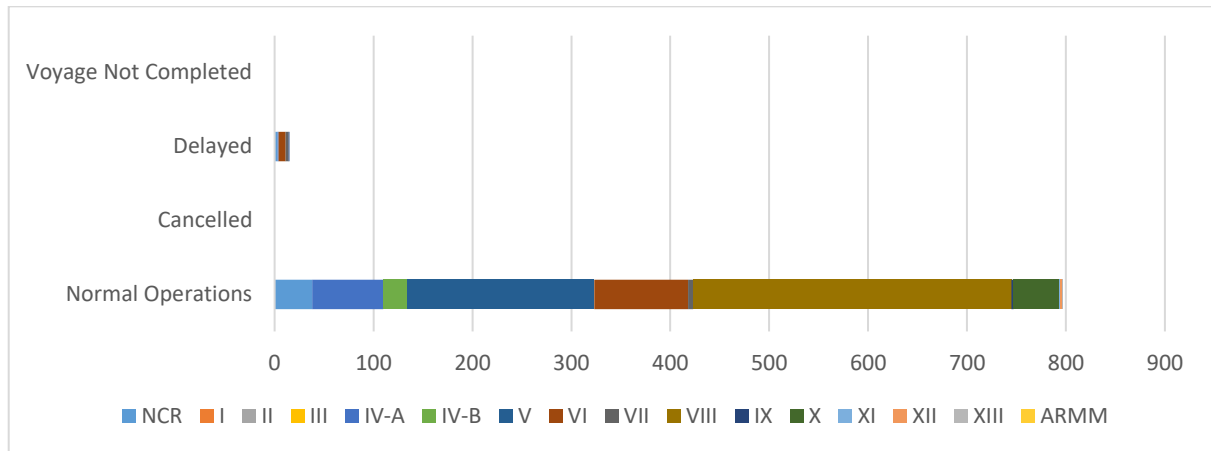
- 812** Shipping Operations Recorded
- 324** Passenger Ships Operated
- 488** Cargo Ships Operated
- 797** Ships Operated Normally
- 0** Operations Cancelled
- 15** Operations Delayed
- 0** Operation Uncompleted

**PASSENGER AND CARGO SHIPPING OPERATIONS IN THE PHILIPPINES
 IN AREAS UNDER MGCQ and GCQ**



Total of 812 Passenger and Cargo Shipping Operations

I. STATUS OF SHIPPING OPERATIONS NATIONWIDE



On Jan. 07-13, 2022, there were 812 passenger and cargo shipping operations conducted wherein 797 or 98% were completed in accordance with their Certificate of Public Convenience (CPC).

Out of the 797 operations completed under normal conditions, the reported movements were mostly in the Eastern Visayas Region at 40% and Bicol Region at 24%.

Fifteen (15) passenger ships or 5% encountered delays due to the additional measures adopted in view of COVID-19 such as temperature screening and inspections.

No shipping operations were not completed at the time of reporting, as the respective ships were still underway.

II. STATUS OF SHIPPING OPERATIONS BY CLASSIFICATION

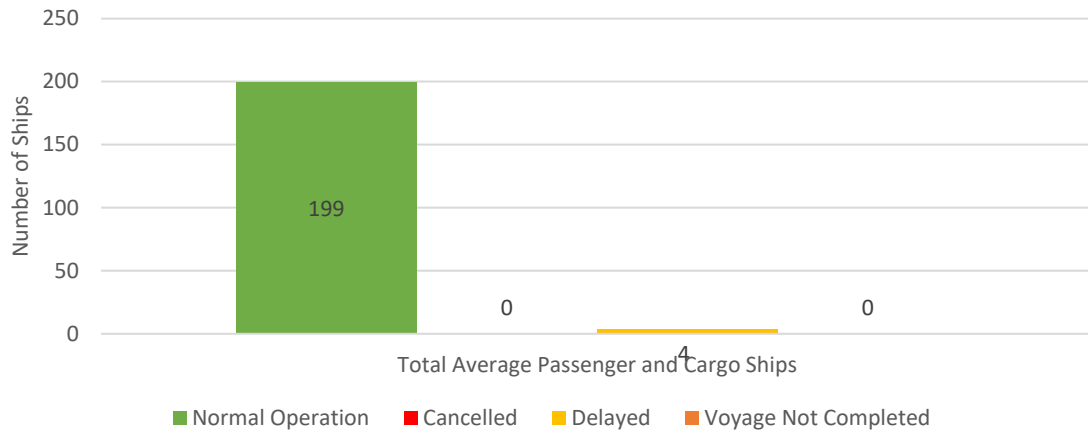
Region	Normal Operations		Cancelled		Delayed		Not Completed	
	Passenger	Cargo	Passenger	Cargo	Passenger	Cargo	Passenger	Cargo
NCR	10	28	-	-	3	-	-	-
I	-	-	-	-	-	-	-	-
II	-	-	-	-	-	-	-	-
III	-	-	-	-	-	-	-	-
IV-A	71	1	-	-	1	-	-	-
IV-B	24	-	-	-	-	-	-	-
V	42	147	-	-	-	-	-	-
VI	30	65	-	-	7	-	-	-
VII	-	5	-	-	3	-	-	-
VIII	128	194	-	-	-	-	-	-
IX	-	2	-	-	1	-	-	-
X	4	42	-	-	-	-	-	-
XI	-	1	-	-	-	-	-	-
XII	-	2	-	-	-	-	-	-
XIII	-	1	-	-	-	-	-	-
ARMM	-	-	-	-	-	-	-	-
Total	309	488	-	-	15	-	-	-

Amid the measures in place due to MGCQ, and GCQ, 488 out of 488 (100%) cargo ships still operated normally – are 30 bulk carrier, 47 container ships, 6 general cargo ships, 53 LCT ships, 2 oil tankers, 325 Roro cargo ships.

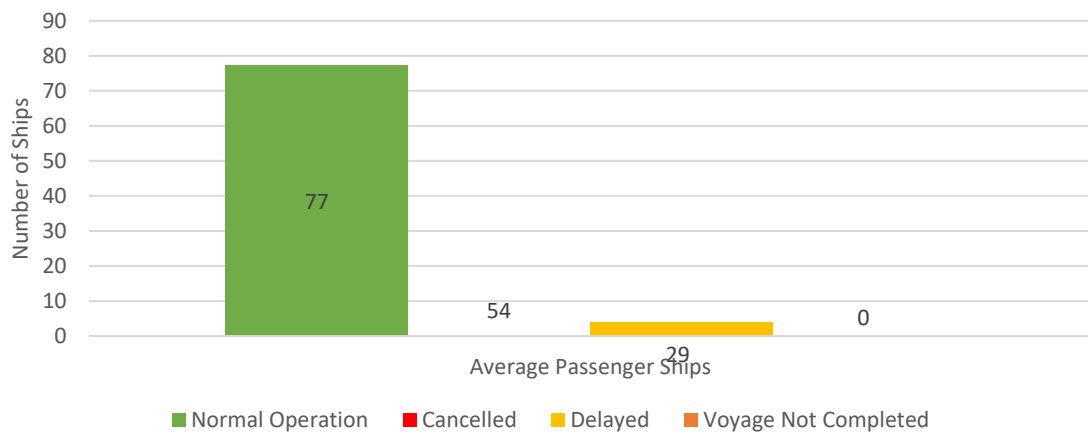
Three-hundred nine (309) passenger ships completed their voyage – 203 conventional passenger ships, 65 RoPax ships and 41 fast craft ferry completed their operations but mostly only carried cargoes during their voyage.

Meanwhile out of the 324 passenger ships, 5% were affected by the measures adopted in view of COVID-19. These measures caused either the cancellation, delay, or uncompleted operations of 15 passenger ships.

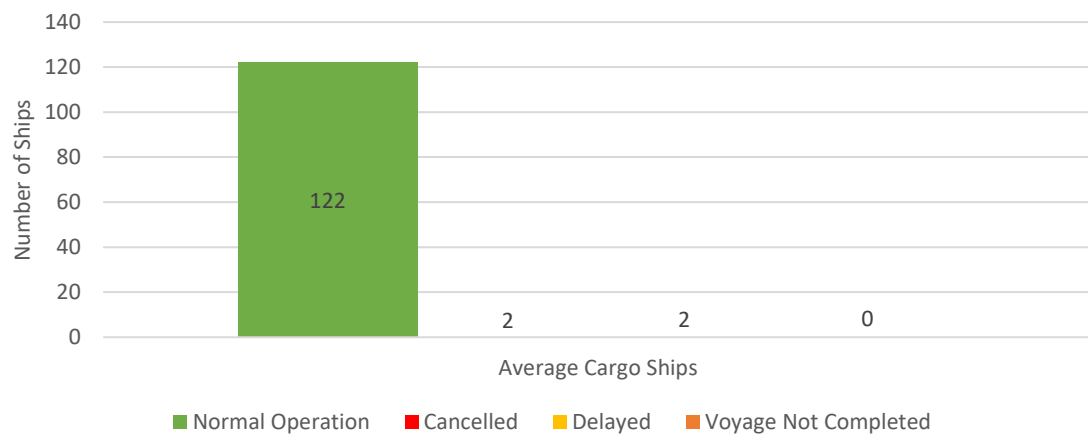
Daily Average Passenger and Cargo Ship Operation



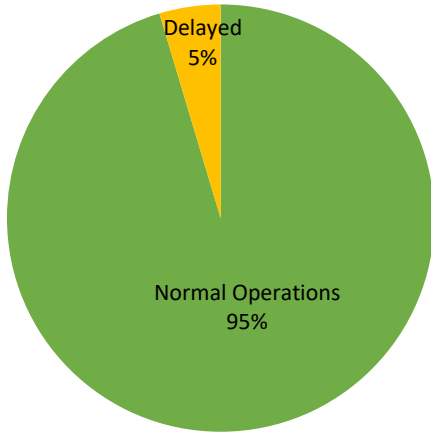
Daily Average Passenger Ship Operation



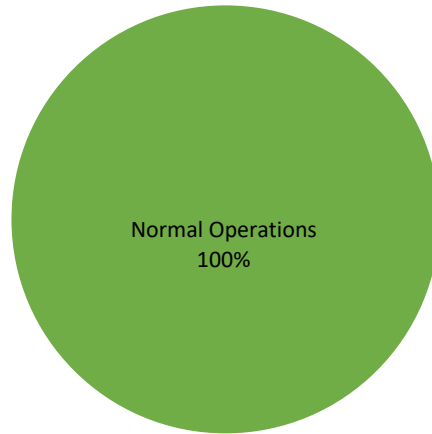
Daily Average Cargo Ship Operation



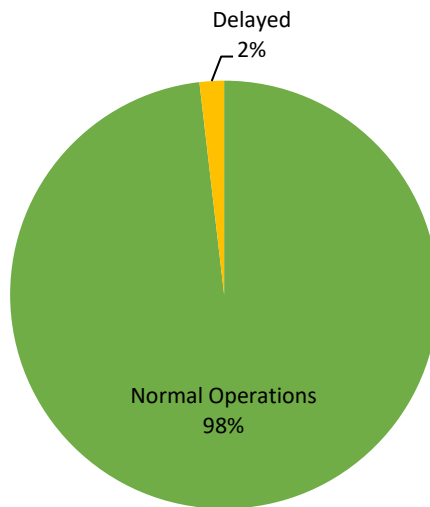
PASSENGER Ship Operations



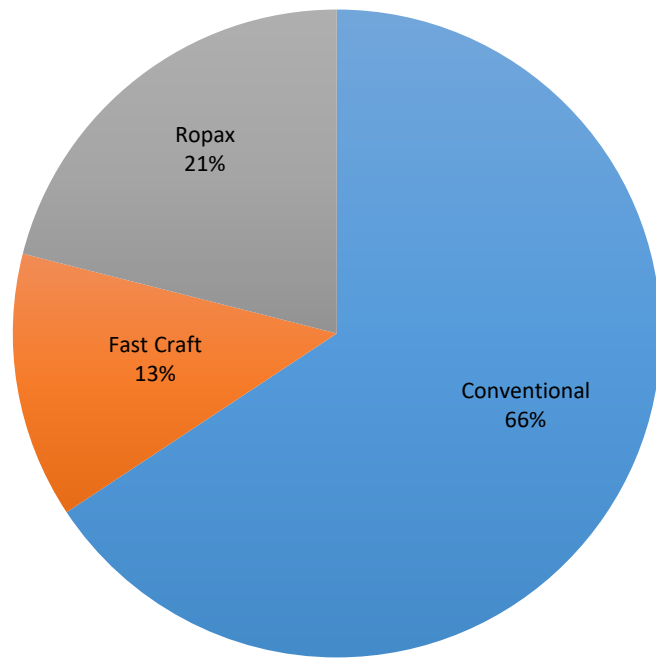
CARGO Ship Operations



PASSENGER and CARGO Ship Operations



Passenger Ship Types under Normal Operations



Cargo Ship Types under Normal Operations

