



**MARITIME INDUSTRY AUTHORITY
WEEKLY SUMMARY SITUATION REPORT - Summary 103**

Passenger and Cargo Shipping Operations on March 07 - 13, 2022
in areas under MGCQ and GCQ

Data generated on March 07 - 13, 2022, 3:00 PM

HIGHLIGHTS

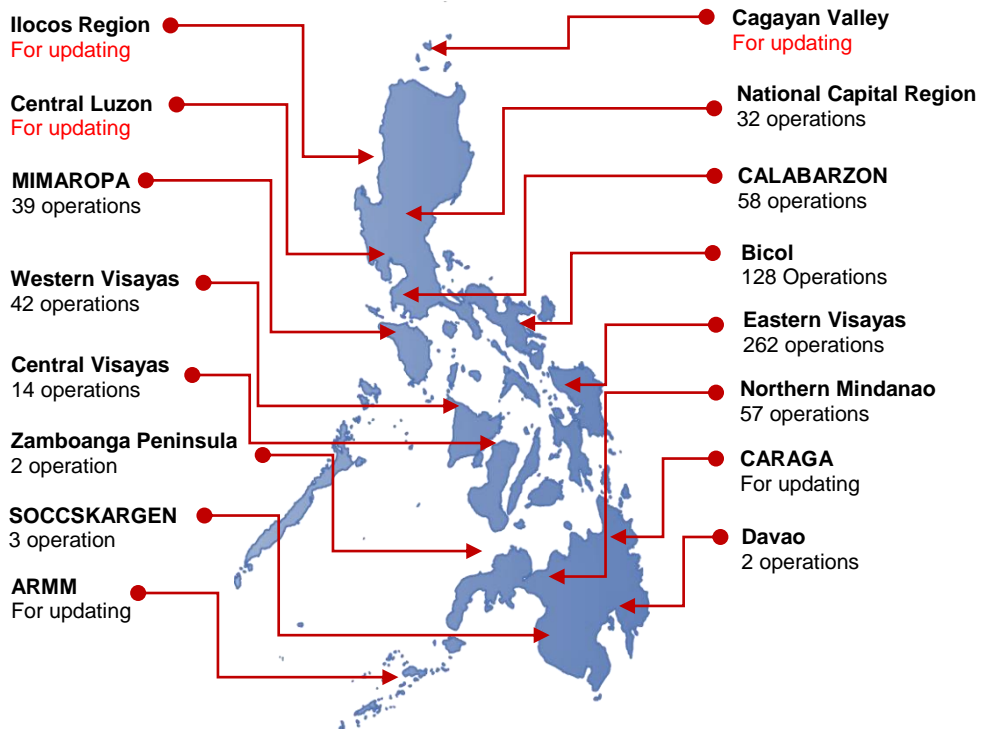
- Ninety-seven percent (97%) of passenger and cargo shipping operations were completed in accordance with the ships' CPC.
- Three percent (3%) of the shipping operations were affected due to the measures implemented in view Code Red Sublevel 2 for the COVID-19.
- Operations of passenger ships were more affected compared to cargo ships. 100% of the cargo shipping operations were completed under normal conditions compared to passenger ships at 93%.
- Daily average passenger and cargo ship operations are 155 completed under normal conditions, 0 cancelled trips, 5 delayed and 0 not completed voyage.
- **With cargo shipping still operational, transport of goods amid MGCQ, and GCQ is assured.**

PASSENGER AND CARGO SHIPPING IN NUMBERS

March 07 - 13, 2022

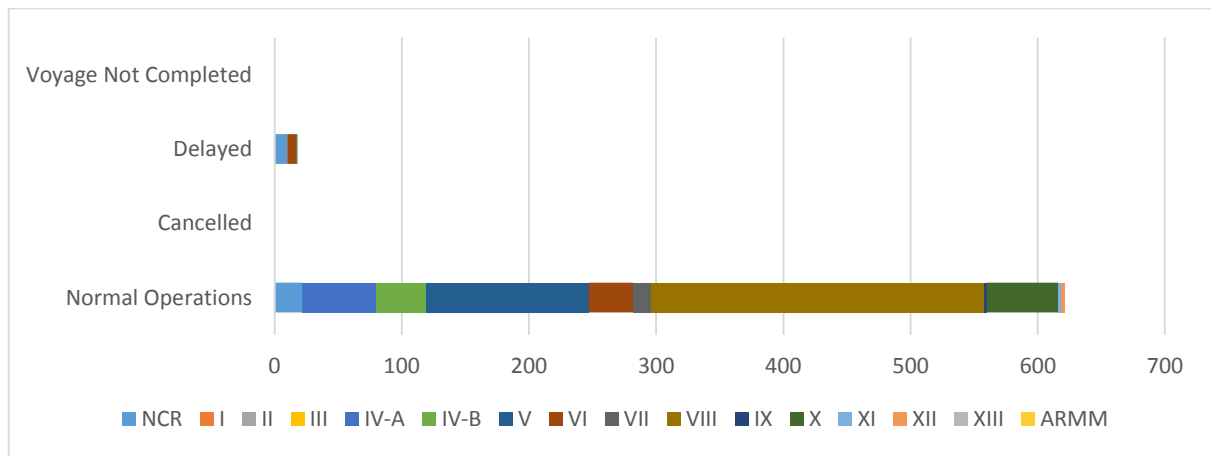
- 639** Shipping Operations Recorded
- 251** Passenger Ships Operated
- 388** Cargo Ships Operated
- 621** Ships Operated Normally
- 0** Operations Cancelled
- 18** Operations Delayed
- 0** Operation Uncompleted

**PASSENGER AND CARGO SHIPPING OPERATIONS IN THE PHILIPPINES
IN AREAS UNDER MGCQ and GCQ**



Total of 639 Passenger and Cargo Shipping Operations

I. STATUS OF SHIPPING OPERATIONS NATIONWIDE



On March 07 - 13, 2022, there were 639 passenger and cargo shipping operations conducted wherein 621 or 97% were completed in accordance with their Certificate of Public Convenience (CPC).

Out of the 621 operations completed under normal conditions, the reported movements were mostly in the Eastern Visayas Region at 42% and Bicol Region at 21%.

Eighteen (18) passenger ships or 7% encountered delays due to the additional measures adopted in view of COVID-19 such as temperature screening and inspections.

No shipping operations were not completed at the time of reporting, as the respective ships were still underway.

II. STATUS OF SHIPPING OPERATIONS BY CLASSIFICATION

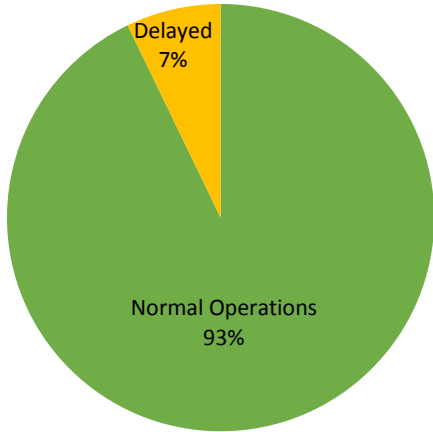
Region	Normal Operations		Cancelled		Delayed		Not Completed	
	Passenger	Cargo	Passenger	Cargo	Passenger	Cargo	Passenger	Cargo
NCR	5	17	-	-	10	-	-	-
I	-	-	-	-	-	-	-	-
II	-	-	-	-	-	-	-	-
III	-	-	-	-	-	-	-	-
IV-A	58	-	-	-	-	-	-	-
IV-B	39	-	-	-	-	-	-	-
V	25	103	-	-	-	-	-	-
VI	15	20	-	-	7	-	-	-
VII	1	13	-	-	-	-	-	-
VIII	90	172	-	-	-	-	-	-
IX	-	2	-	-	-	-	-	-
X	-	56	-	-	1	-	-	-
XI	-	2	-	-	-	-	-	-
XII	-	3	-	-	-	-	-	-
XIII	-	-	-	-	-	-	-	-
ARMM	-	-	-	-	-	-	-	-
Total	233	388	-	-	18	-	-	-

Amid the measures in place due to MGCQ, and GCQ, 388 out of 388 (100%) cargo ships still operated normally – are 30 bulk carrier, 50 container ships, 7 general cargo ships, 33 LCT ships, 1 oil tanker, 265 Roro cargo ships.

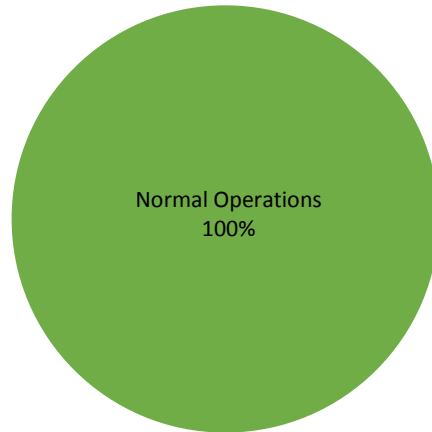
Two hundred and thirty-three (233) passenger ships completed their voyage – 152 conventional passenger ships, 46 RoPax ships and 35 fast craft ferry completed their operations but mostly only carried cargoes during their voyage.

Meanwhile out of the 251 passenger ships, 7% were affected by the measures adopted in view of COVID-19. These measures caused either the cancellation, delay, or uncompleted operations of 18 passenger ships.

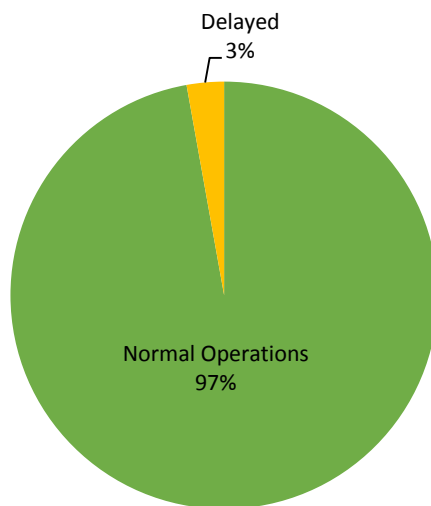
**PASSENGER
Ship Operations**



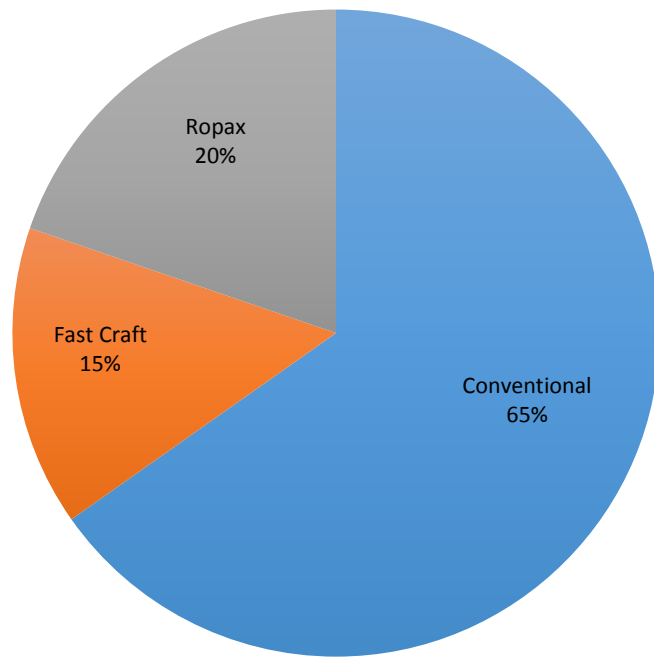
**CARGO
Ship Operations**



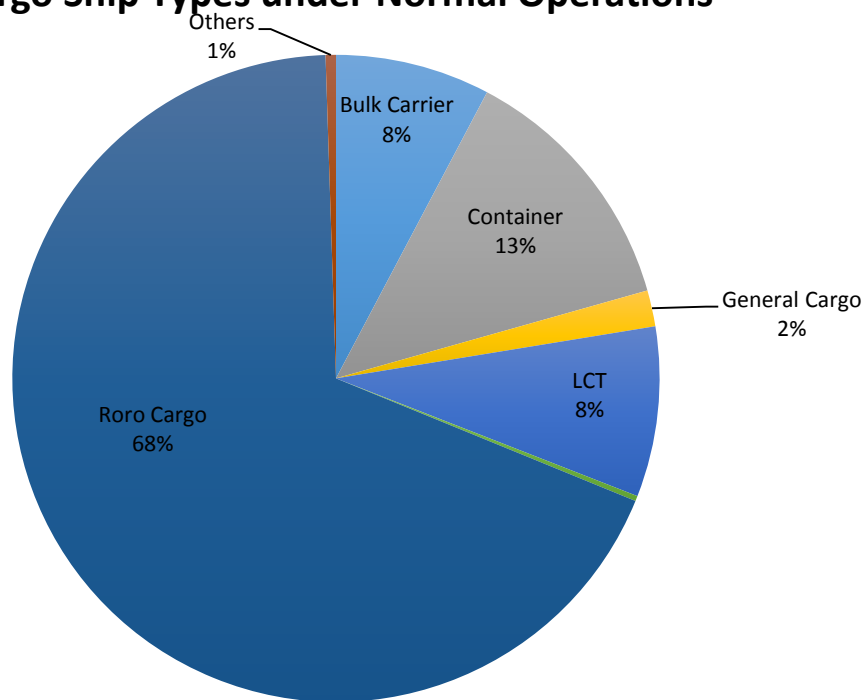
**PASSENGER and CARGO
Ship Operations**



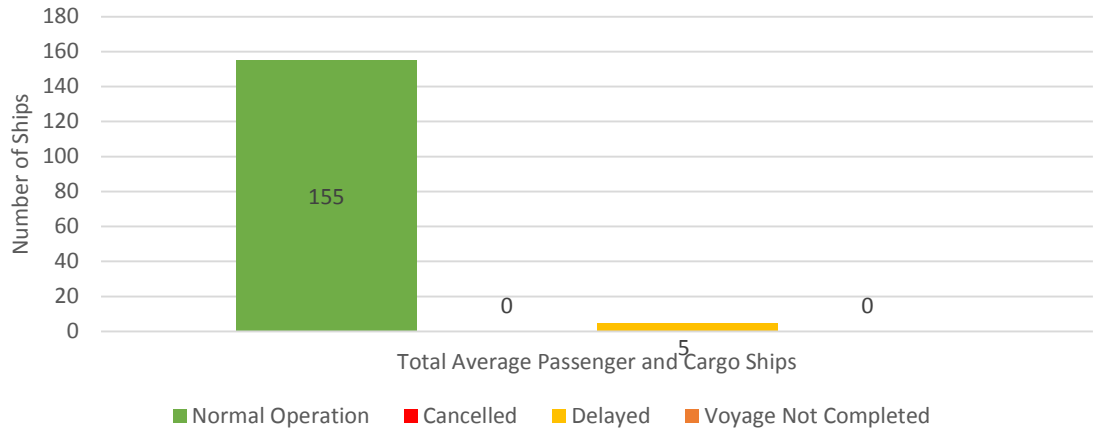
Passenger Ship Types under Normal Operations



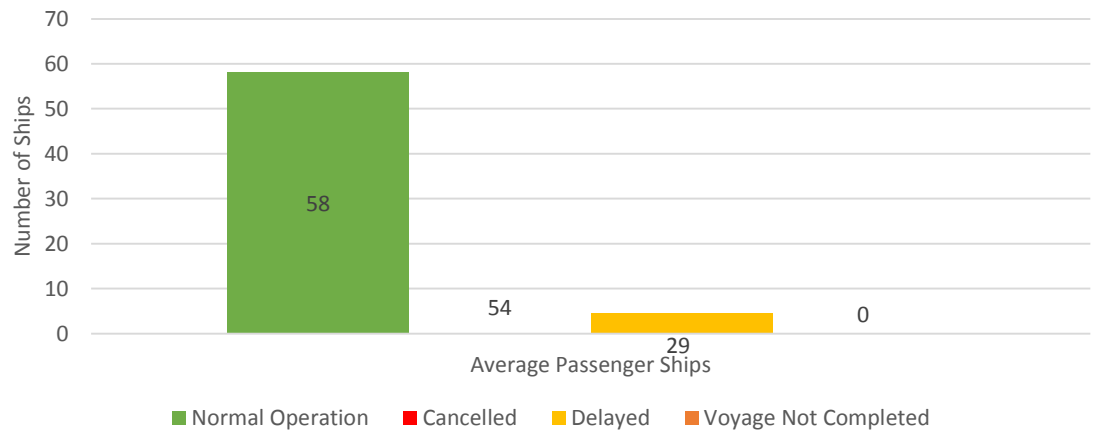
Cargo Ship Types under Normal Operations



Daily Average Passenger and Cargo Ship Operation



Daily Average Passenger Ship Operation



Daily Average Cargo Ship Operation

