



MARITIME INDUSTRY AUTHORITY
WEEKLY SUMMARY SITUATION REPORT - Summary 116
 Passenger and Cargo Shipping Operations on Jun 3 - 9, 2022
 in areas under Alert Level 1 & 2
Data generated on Jun 3 - 9, 2022, 3:00 PM

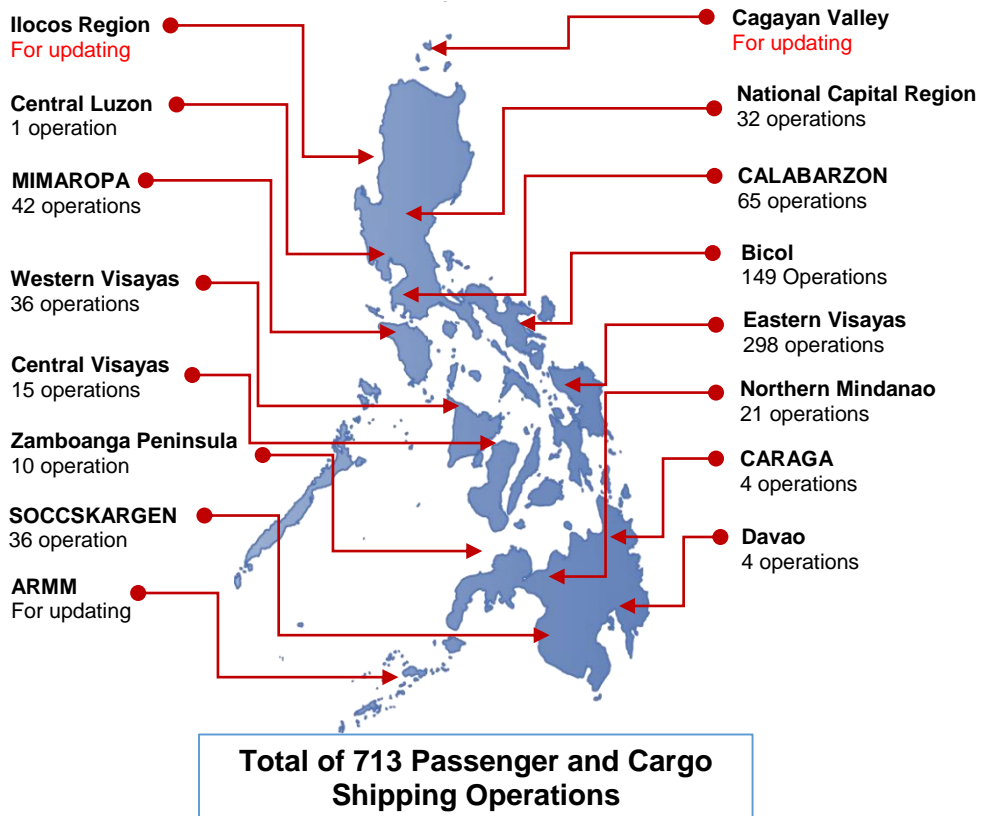
HIGHLIGHTS

- Ninety-eight percent (98%) of passenger and cargo shipping operations were completed in accordance with the ships' CPC.
- Two percent (2%) of the shipping operations were affected.
- Operations of passenger ships were more affected compared to cargo ships. 100% of the cargo shipping operations were completed under normal conditions compared to passenger ships at 95%.
- Daily average passenger and cargo ship operations are 175 completed under normal conditions, 0 cancelled trips, 4 delayed and 0 not completed voyage.
- **With cargo shipping still operational, transport of goods is assured.**

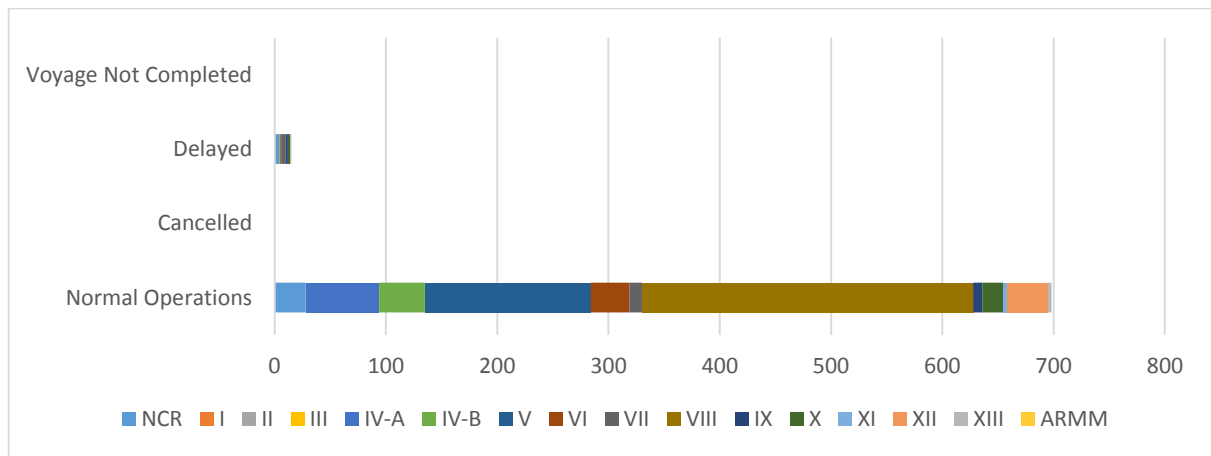
PASSENGER AND CARGO SHIPPING IN NUMBERS
 Jun 3 - 9, 2022

- 713** Shipping Operations Recorded
- 281** Passenger Ships Operated
- 432** Cargo Ships Operated
- 698** Ships Operated Normally
- 0** Operations Cancelled
- 15** Operations Delayed
- 0** Operation Uncompleted

**PASSENGER AND CARGO SHIPPING OPERATIONS IN THE PHILIPPINES
 IN AREAS UNDER ALERT LEVEL 1 & 2**



I. STATUS OF SHIPPING OPERATIONS NATIONWIDE



On Jun 3 - 9, 2022, there were 713 passenger and cargo shipping operations conducted wherein 698 or 98% were completed in accordance with their Certificate of Public Convenience (CPC).

Out of the 698 operations completed under normal conditions, the reported movements were mostly in the Eastern Visayas Region at 43% and Bicol Region at 21%.

Fifteen (15) passenger ships or 5% encountered delays.

No shipping operations were not completed at the time of reporting, as the respective ships were still underway.

II. STATUS OF SHIPPING OPERATIONS BY CLASSIFICATION

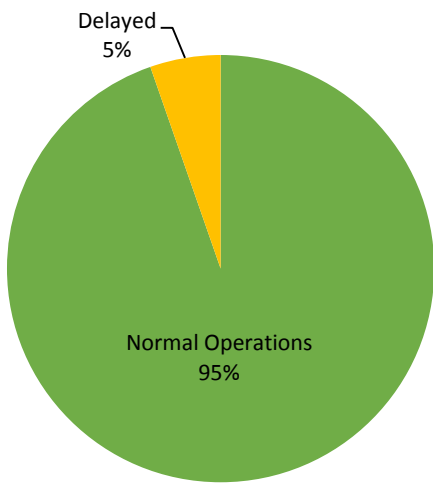
Region	Normal Operations		Cancelled		Delayed		Not Completed	
	Passenger	Cargo	Passenger	Cargo	Passenger	Cargo	Passenger	Cargo
NCR	6	22	-	-	4	-	-	-
I	-	-	-	-	-	-	-	-
II	-	-	-	-	-	-	-	-
III	-	1	-	-	-	-	-	-
IV-A	65	-	-	-	-	-	-	-
IV-B	41	-	-	-	1	-	-	-
V	34	115	-	-	-	-	-	-
VI	14	21	-	-	1	-	-	-
VII	8	3	-	-	4	-	-	-
VIII	98	200	-	-	-	-	-	-
IX	-	8	-	-	2	-	-	-
X	-	19	-	-	2	-	-	-
XI	-	4	-	-	-	-	-	-
XII	-	36	-	-	-	-	-	-
XIII	-	3	-	-	1	-	-	-
ARMM	-	-	-	-	-	-	-	-
Total	266	432	-	-	15	-	-	-

Amid the measures in place due to MGCQ, and GCQ, 432 out of 432 (100%) cargo ships still operated normally – are 27 bulk carrier, 44 container ships, 12 general cargo ships, 55 LCT ships, 2 oil tankers, 291 Roro cargo ships.

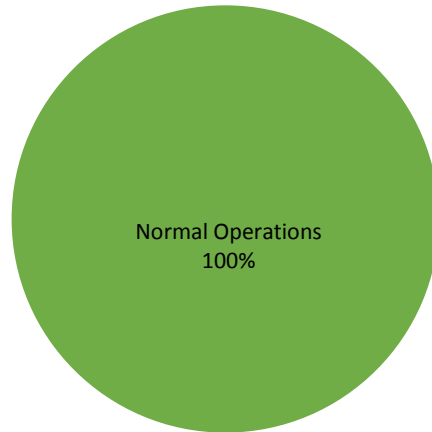
Two – hundred and sixty six (266) passenger ships completed their voyage – 150 conventional passenger ships, 66 RoPax ships and 50 fast craft ferry completed their operations but mostly only carried cargoes during their voyage.

Meanwhile out of the 281 passenger ships, 5% were affected by the measures adopted in view of COVID-19. These measures caused either the cancellation, delay, or uncompleted operations of 15 passenger ships.

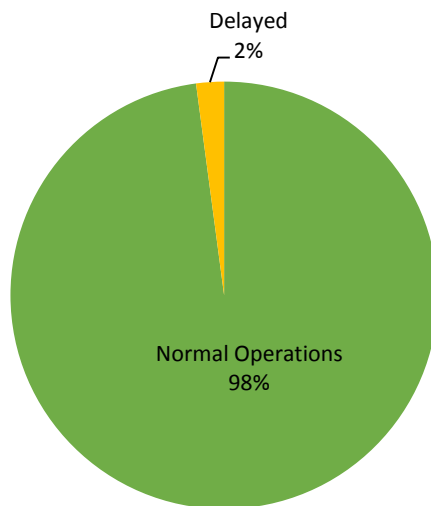
PASSENGER Ship Operations



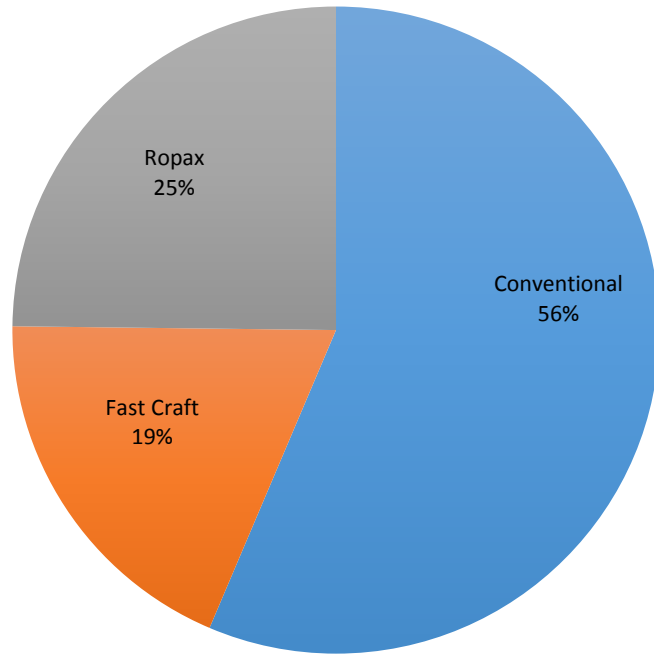
CARGO Ship Operations



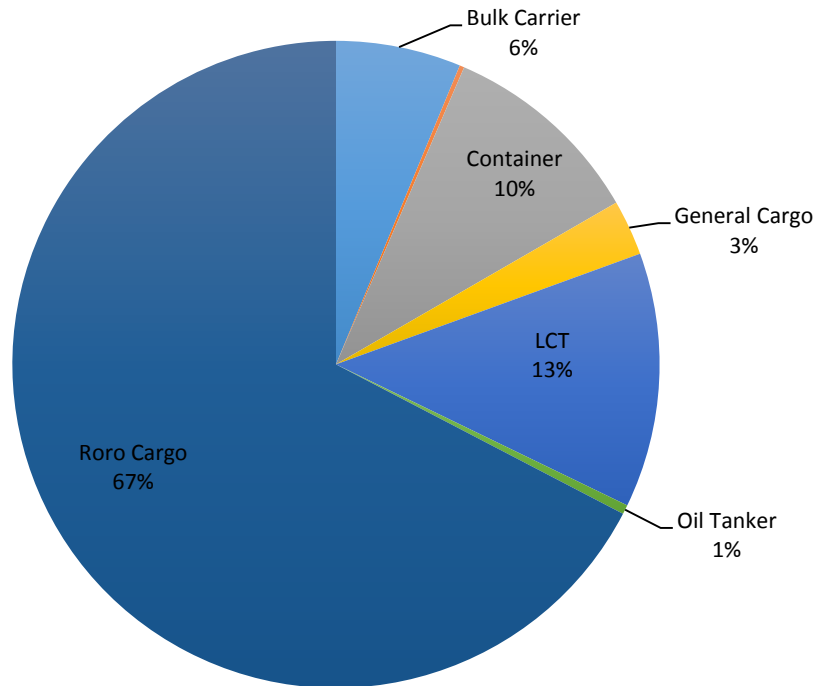
PASSENGER and CARGO Ship Operations



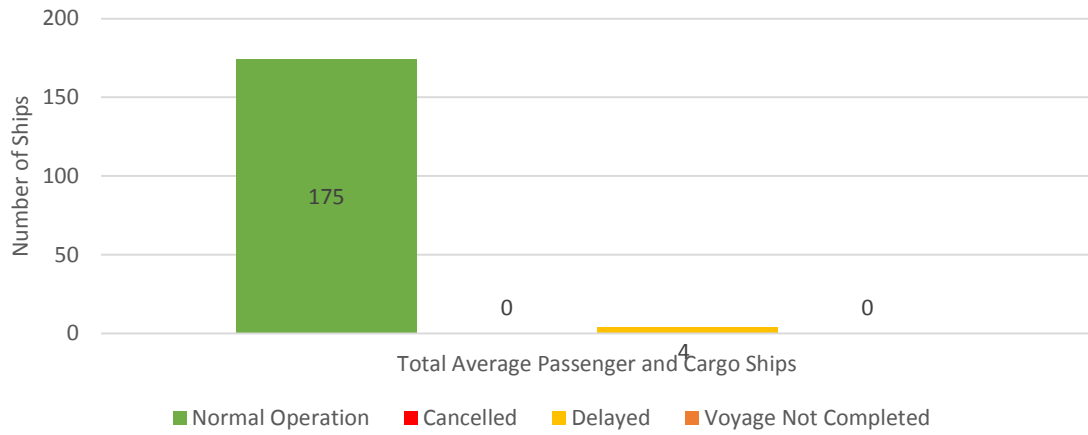
Passenger Ship Types under Normal Operations



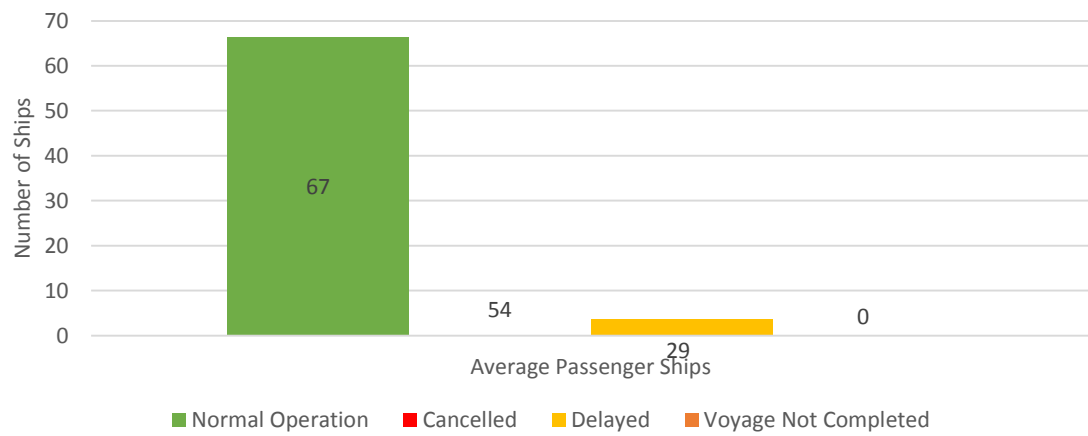
Cargo Ship Types under Normal Operations



Daily Average Passenger and Cargo Ship Operation



Daily Average Passenger Ship Operation



Daily Average Cargo Ship Operation

