



MARITIME INDUSTRY AUTHORITY SITUATION REPORT – 06

Passenger and Cargo Shipping Operations from March 26 to March 27, 2020
amid Code Red Sublevel 2 for the COVID-19
Data generated on March 27, 2020, 5:00 PM

HIGHLIGHTS

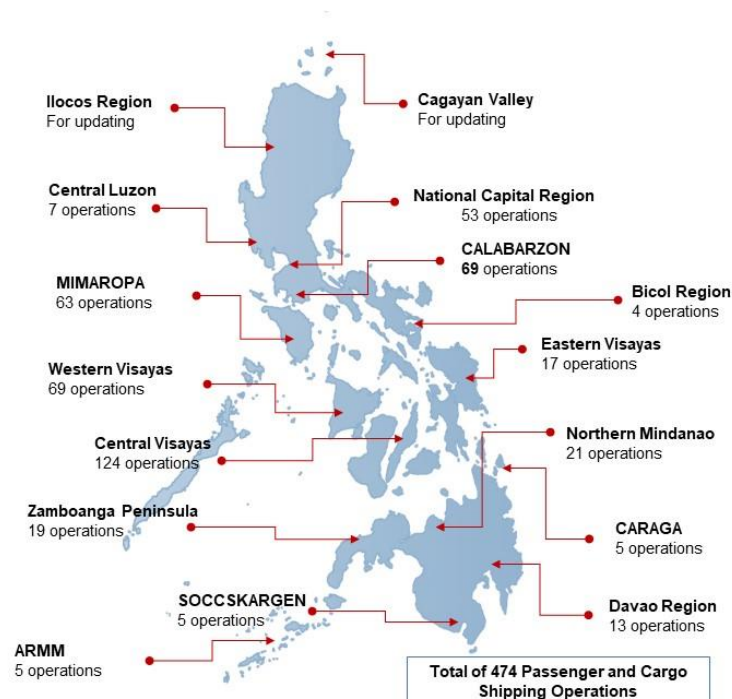
- Forty-nine percent (49%) of passenger and cargo shipping operations were completed in accordance with the ships' CPC.
- Fifty-one percent (51%) of the shipping operations were affected due to the measures implemented in view Code Red Sublevel 2 for the COVID-19.
- Operations of passenger ships were more affected compared to cargo ships. 83% of the cargo shipping operations were completed under normal conditions compared to passenger ships at 35%.
- **With cargo shipping still operational, transport of goods amid Enhanced Community Quarantine is assured.**

PASSENGER AND CARGO SHIPPING IN NUMBERS

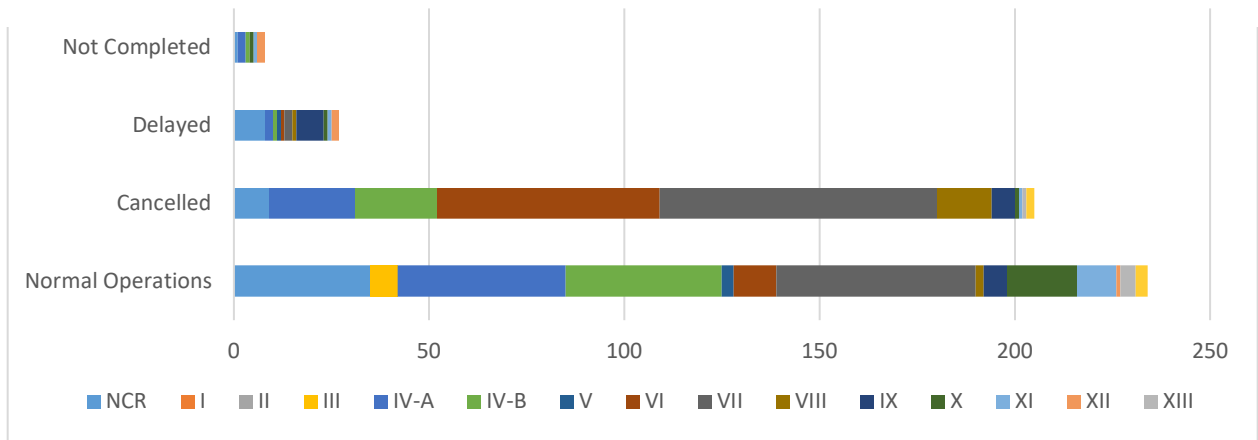
March 26 to March 27, 2020

- 474** Shipping Operations Recorded
- 344** Passenger Ships Operated
- 130** Cargo Ships Operated
- 234** Ships Operated Normally
- 205** Operations Cancelled
- 27** Operations Delayed
- 8** Operations Uncompleted

PASSENGER AND CARGO SHIPPING OPERATIONS IN THE PHILIPPINES AMID CODE RED SUBLEVEL 2 FOR THE COVID-19



I. STATUS OF SHIPPING OPERATIONS NATIONWIDE



On March 26 to 27, 2020, there were 474 passenger and cargo shipping operations conducted wherein 234 or 49.34% were completed in accordance with their Certificate of Public Convenience (CPC).

Out of the 234 operations completed under normal conditions, the reported movements were mostly in the Central Visayas Region at 21.79% followed by the Mimaropa Region at 18.38%.

Meanwhile, 43.25% of the passenger and cargo shipping operations were cancelled, all due to the community quarantine measures imposed by the different local government units governing the ships' ports of destination. Mostly affected were operations in the Visayas, particularly in the central and western regions.

Twenty-seven (27) passenger and cargo ships or 5.70% encountered delays due to the additional measures adopted in view of COVID-19 such as temperature screening and inspections.

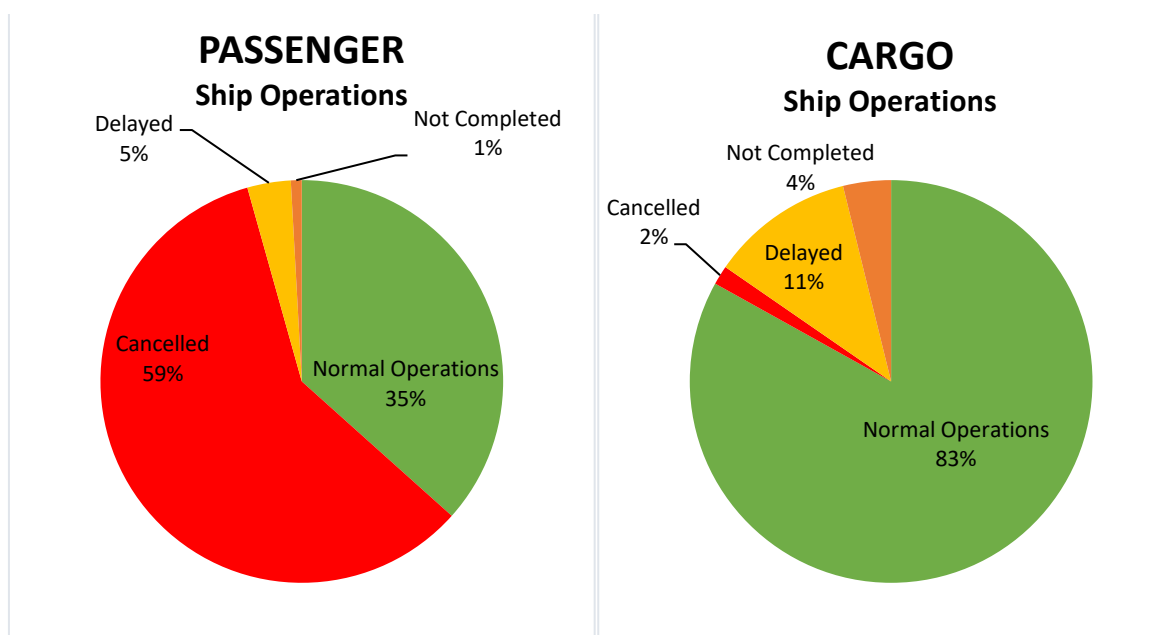
Lastly, three passenger and five cargo shipping operations were not completed at the time of reporting, mostly as respective ships were still underway.

II. STATUS OF SHIPPING OPERATIONS BY CLASSIFICATION

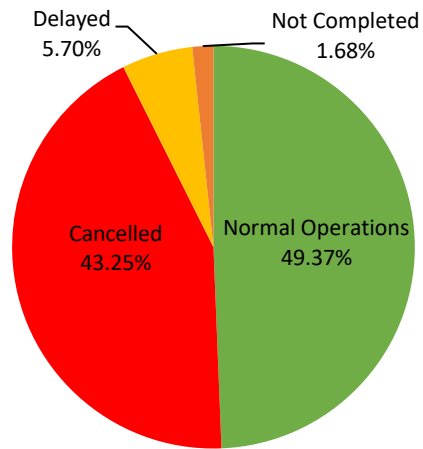
Region	Normal Operations		Cancelled		Delayed		Not Completed	
	Passenger	Cargo	Passenger	Cargo	Passenger	Cargo	Passenger	Cargo
NCR	8	27	8	1	1	7	0	1
I	0	0	0	0	0	0	0	0
II	0	0	0	0	0	0	0	0
III	0	7	0	0	0	0	0	0
IV-A	34	9	22	0	2	0	2	0
IV-B	38	2	21	0	1	0	1	0
V	2	1	0	0	1	0	0	0
VI	7	4	57	0	1	0	0	0
VII	23	28	71	0	2	0	0	0
VIII	1	1	14	0	0	1	0	0
IX	3	3	6	0	4	3	0	0
X	7	11	1	0	0	1	0	1
XI	0	10	0	1	0	1	0	1
XII	0	1	0	0	0	2	0	2
XIII	2	2	1	0	0	0	0	0
ARMM	1	2	2	0	0	0	0	0
Total	126	108	203	2	12	15	3	5

Amid the measures in place due to Code Red Sublevel 2 on COVID-19, 108 out of 130 (83%) cargo ships still operated normally - 41 are container ships, 1 bulk carriers, 2 general cargo ships, 5 LCT ships, 37 oil tankers, 11 RORO cargo ships and 11 other types.

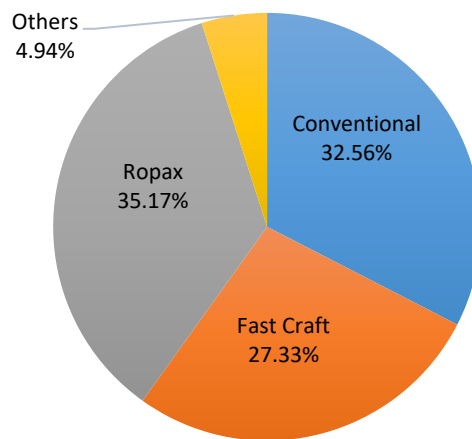
Meanwhile out of the 344 passenger ships, 65% were affected by the measures adopted in view of COVID-19. These measures caused either the cancellation, delay or uncompleted operations of 218 passenger ships. The 126 passenger ships or 35% that completed their operation only carried cargoes during their voyage.



PASSENGER AND CARGO Ship Operations



Passenger Ship Types under Normal Operations



Cargo Ship Types under Normal Operations

