



MARITIME INDUSTRY AUTHORITY SITUATION REPORT – 01

Passenger and Cargo Shipping Operations from March 16 to March 17, 2020
amid Code Red Sublevel 2 for the COVID-19
Data generated on March 19, 2020, 10:00am

HIGHLIGHTS

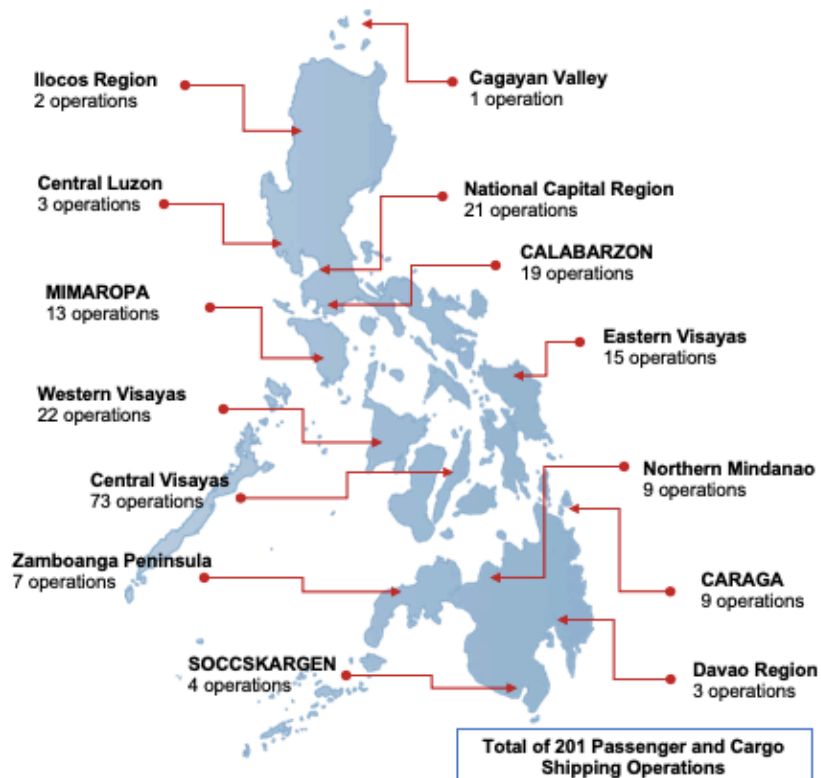
- Sixty-four percent (64.7%) of passenger and cargo shipping operations were completed in accordance with the ships' CPC.
- Thirty-two percent (32.3%) of the shipping operations were affected due to the measures implemented in view Code Red Sublevel 2 for the COVID-19.
- Operations of passenger ships were more affected compared to cargo ships. Almost 80% of the cargo shipping operations were completed under normal conditions compared to passenger ships at 55%.
- **With cargo shipping still operational, transport of goods amid Enhanced Community Quarantine is assured.**

PASSENGER AND CARGO SHIPPING IN NUMBERS

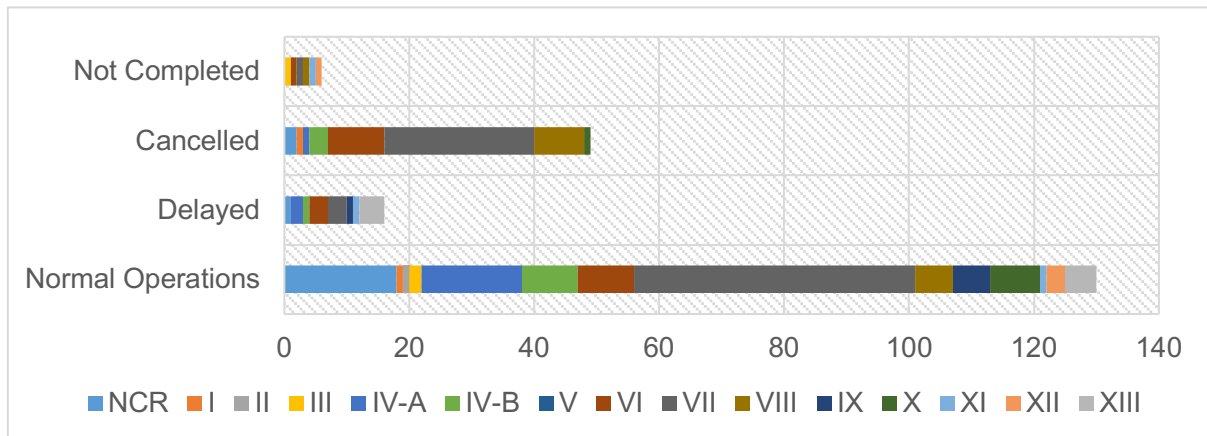
March 16 to March 17, 2020

- 201** Shipping Operations Recorded
- 119** Passenger Ships Operated
- 82** Cargo Ships Operated
- 130** Ships Operated Normally
- 49** Operations Cancelled
- 16** Operations Delayed
- 6** Operations Uncompleted

PASSENGER AND CARGO SHIPPING OPERATIONS IN THE PHILIPPINES AMID CODE RED SUBLEVEL 2 FOR THE COVID-19



I. STATUS OF SHIPPING OPERATIONS NATIONWIDE



On March 16 to 17, 2020, there were 201 passenger and cargo shipping operations conducted wherein 130 or 64.7% were completed in accordance with their Certificate of Public Convenience (CPC).

Out of the 130 operations completed under normal conditions, the reported movements were mostly in the Central Visayas Region at 34.6% followed by the National Capital Region at 13.8%.

Meanwhile, 24% of the passenger and cargo shipping operations were cancelled, all due to the community quarantine measures imposed by the different local government units governing the ships' ports of destination. Mostly affected were operations in the Visayas, particularly in the central, eastern and western regions.

Sixteen (7.9%) passenger and cargo ships encountered delays due to the additional measures adopted in view of COVID-19 such as temperature screening and inspections.

Lastly, one passenger and five cargo shipping operations were not completed at the time of reporting, mostly as respective ships were still underway.

II. STATUS OF SHIPPING OPERATIONS BY CLASSIFICATION

Region	Normal Operations		Cancelled		Delayed		Not Completed	
	Passenger	Cargo	Passenger	Cargo	Passenger	Cargo	Passenger	Cargo
NCR	0	18	1	1	0	1	0	0
I	0	1	0	1	0	0	0	0
II	0	1	0	0	0	0	0	0
III	0	2	0	0	0	0	0	1
IV-A	11	5	1	0	2	0	0	0
IV-B	9	0	3	0	1	0	0	0
V	No Data in the System							
VI	2	7	9	0	2	1	0	1
VII	33	12	24	0	1	2	1	0
VIII	1	5	8	0	0	0	0	1
IX	3	3	0	0	0	1	0	0
X	3	5	1	0	0	0	0	0
XI	0	1	0	0	0	1	0	1
XII	0	3	0	0	0	0	0	1
XIII	3	2	0	0	0	4	0	0
Total	65	65	47	2	6	10	1	5

During the period, passenger shipping operations were more affected than that of cargoes. Amid the measures in place due to Code Red Sublevel 2 on COVID-19, 65 out of 82 (79%) cargo ships still operated normally.

Meanwhile out of the 119 passenger ships, 45% were affected by the measures adopted in view of COVID-19. These measures caused either the cancellation, delay or uncompleted operations of 54 passenger ships. Moreover, there were eight ships from Visayas and Mindanao that are authorized to carry both passengers and cargoes per CPC but were only able to transport rolling cargoes due to sea travel restrictions.

