



# MARITIME INDUSTRY AUTHORITY SITUATION REPORT – 02

Passenger and Cargo Shipping Operations from March 18 to March 19, 2020  
 amid Code Red Sublevel 2 for the COVID-19  
*Data generated on March 20, 2020, 10:00am*

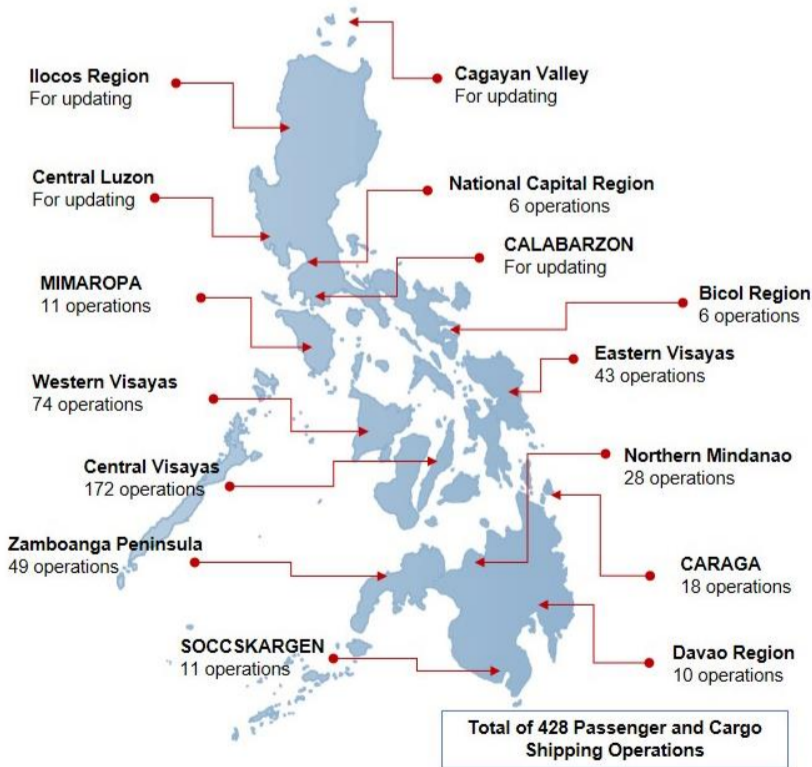
## HIGHLIGHTS

- Forty-five percent (45.32%) of passenger and cargo shipping operations were completed in accordance with the ships' CPC.
- Fifty-five percent (54.68%) of the shipping operations were affected due to the measures implemented in view Code Red Sublevel 2 for the COVID-19.
- Operations of passenger ships were more affected compared to cargo ships. 75.38% of the cargo shipping operations were completed under normal conditions compared to passenger ships at 32.21%.
- **With cargo shipping still operational, transport of goods amid Enhanced Community Quarantine is assured.**

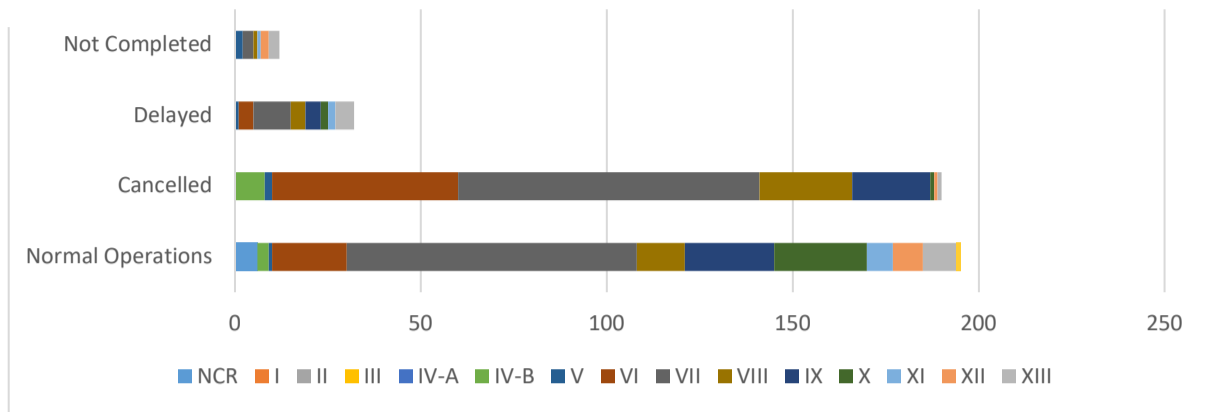
**PASSENGER AND CARGO SHIPPING IN NUMBERS**  
 March 18 to March 19, 2020

- 428** Shipping Operations Recorded
- 298** Passenger Ships Operated
- 130** Cargo Ships Operated
- 194** Ships Operated Normally
- 190** Operations Cancelled
- 32** Operations Delayed
- 12** Operations Uncompleted

## PASSENGER AND CARGO SHIPPING OPERATIONS IN THE PHILIPPINES AMID CODE RED SUBLEVEL 2 FOR THE COVID-19



## I. STATUS OF SHIPPING OPERATIONS NATIONWIDE



On March 18 to 19, 2020, there were 428 passenger and cargo shipping operations conducted wherein 194 or 45.32% were completed in accordance with their Certificate of Public Convenience (CPC).

Out of the 194 operations completed under normal conditions, the reported movements were mostly in the Central Visayas Region at 40.20% followed by the Northern Mindanao Region at 12.89%.

Meanwhile, 44.39% of the passenger and cargo shipping operations were cancelled, all due to the community quarantine measures imposed by the different local government units governing the ships' ports of destination. Mostly affected were operations in the Visayas, particularly in the central, eastern and western regions.

Thirty-two (7.47%) passenger and cargo ships encountered delays due to the additional measures adopted in view of COVID-19 such as temperature screening and inspections.

Lastly, four passenger and eight cargo shipping operations were not completed at the time of reporting, mostly as respective ships were still underway.

## II. STATUS OF SHIPPING OPERATIONS BY CLASSIFICATION

Region	Normal Operations		Cancelled		Delayed		Not Completed	
	Passenger	Cargo	Passenger	Cargo	Passenger	Cargo	Passenger	Cargo
<b>NCR</b>	0	6	0	0	0	0	0	0
<b>I</b>	0	0	0	0	0	0	0	0
<b>II</b>	0	0	0	0	0	0	0	0
<b>III</b>	0	0	0	0	0	0	0	0
<b>IV-A</b>	0	0	0	0	0	0	0	0
<b>IV-B</b>	3	0	7	1	0	0	0	0
<b>V</b>	1	0	2	0	1	0	2	0
<b>VI</b>	10	10	50	0	3	1	0	0
<b>VII</b>	45	33	81	0	1	9	1	2
<b>VIII</b>	3	10	25	0	3	1	0	1
<b>IX</b>	19	5	19	2	1	3	0	0
<b>X</b>	10	15	1	0	2	0	0	0
<b>XI</b>	0	7	0	0	0	2	0	1
<b>XII</b>	0	8	1	0	0	0	0	2
<b>XIII</b>	5	4	1	0	0	5	1	2
<b>Total</b>	<b>96</b>	<b>98</b>	<b>187</b>	<b>3</b>	<b>11</b>	<b>21</b>	<b>4</b>	<b>8</b>

During the period, passenger shipping operations were more affected than that of cargoes. Amid the measures in place due to Code Red Sublevel 2 on COVID-19, 99 out of 130 (75.38%) cargo ships still operated normally.

Meanwhile out of the 298 passenger ships, 67.79% were affected by the measures adopted in view of COVID-19. These measures caused either the cancellation, delay or uncompleted operations of 202 passenger ships.

