



MARITIME INDUSTRY AUTHORITY SITUATION REPORT – 12

Passenger and Cargo Shipping Operations on 04 April 2020
amid Code Red Sublevel 2 for the COVID-19

Data generated on 04 April 2020, 3:00 PM

HIGHLIGHTS

- Fifty-one percent (51%) of passenger and cargo shipping operations were completed in accordance with the ships' CPC.
- Forty-nine percent (49%) of the shipping operations were affected due to the measures implemented in view Code Red Sublevel 2 for the COVID-19.
- Operations of passenger ships were more affected compared to cargo ships. 85% of the cargo shipping operations were completed under normal conditions compared to passenger ships at 33%.
- **With cargo shipping still operational, transport of goods amid Enhanced Community Quarantine is assured.**

PASSENGER AND CARGO SHIPPING IN NUMBERS

04 April 2020

136 Shipping Operations Recorded

90 Passenger Ships Operated

46 Cargo Ships Operated

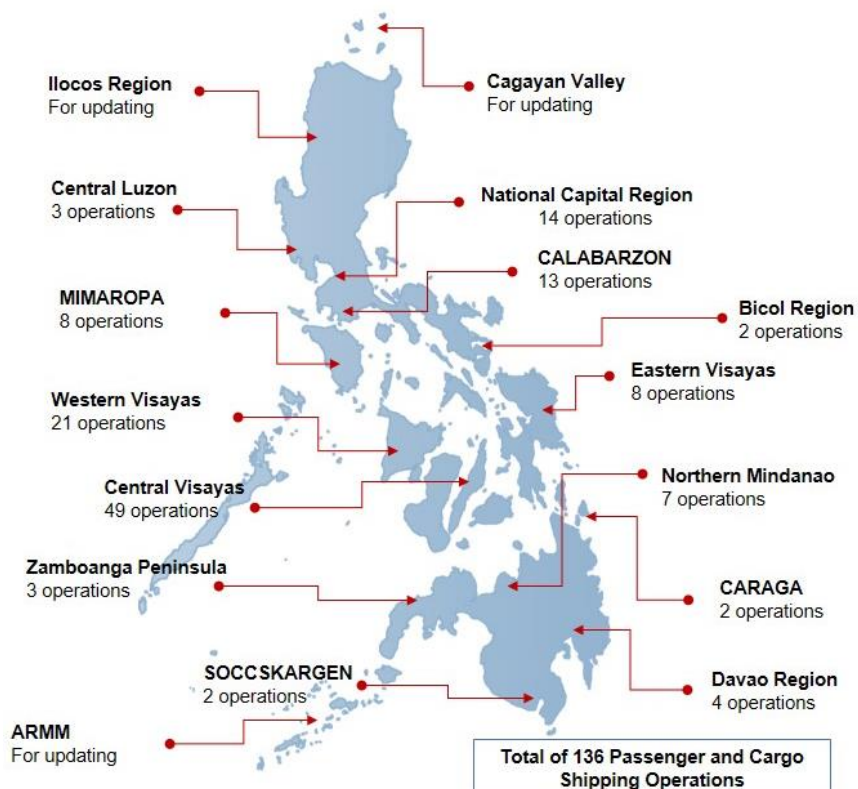
69 Ships Operated Normally

59 Operations Cancelled

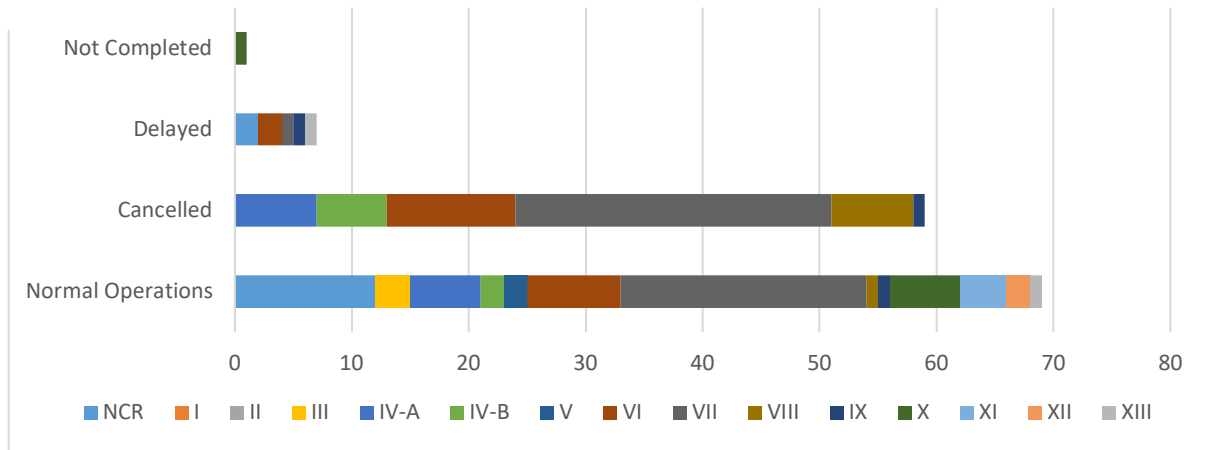
7 Operations Delayed

1 Operation Uncompleted

PASSENGER AND CARGO SHIPPING OPERATIONS IN THE PHILIPPINES AMID CODE RED SUBLEVEL 2 FOR THE COVID-19



I. STATUS OF SHIPPING OPERATIONS NATIONWIDE



On April 04, 2020, there were 136 passenger and cargo shipping operations conducted wherein 69 or 51% were completed in accordance with their Certificate of Public Convenience (CPC).

Out of the 69 operations completed under normal conditions, the reported movements were mostly in the Central Visayas Region at 30% followed by NCR at 17%.

Meanwhile, 43% of the passenger and cargo shipping operations were cancelled, all due to the community quarantine measures imposed by the different local government units governing the ships' ports of destination. Mostly affected were operations in the Visayas, particularly in the central and western regions.

Seven (7) passenger and cargo ships or 5% encountered delays due to the additional measures adopted in view of COVID-19 such as temperature screening and inspections.

Lastly, only one (1) passenger shipping operation was not completed at the time of reporting, as the respective ship was still underway.

II. STATUS OF SHIPPING OPERATIONS BY CLASSIFICATION

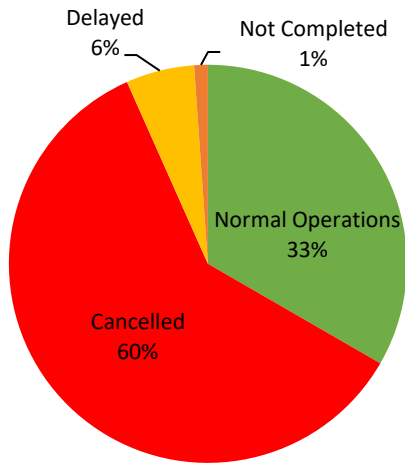
Region	Normal Operations		Cancelled		Delayed		Not Completed	
	Passenger	Cargo	Passenger	Cargo	Passenger	Cargo	Passenger	Cargo
NCR	3	9	0	0	0	2	0	0
I	0	0	0	0	0	0	0	0
II	0	0	0	0	0	0	0	0
III	0	3	0	0	0	0	0	0
IV-A	2	4	7	0	0	0	0	0
IV-B	1	1	6	0	0	0	0	0
V	2	0	0	0	0	0	0	0
VI	6	2	11	0	2	0	0	0
VII	10	11	22	5	1	0	0	0
VIII	0	1	7	0	0	0	0	0
IX	1	0	1	0	1	0	0	0
X	4	2	0	0	0	0	1	0
XI	0	4	0	0	0	0	0	0
XII	0	2	0	0	0	0	0	0
XIII	1	0	0	0	1	0	0	0
ARMM	0	0	0	0	0	0	0	0
Total	30	39	54	5	5	2	1	0

Amid the measures in place due to Code Red Sublevel 2 on COVID-19, 39 out of 46 (85%) cargo ships still operated normally - 15 are container ships, 2 general cargo ships, 3 LCT ships, 15 oil tankers, 3 RORO cargo ships, and 1 other type.

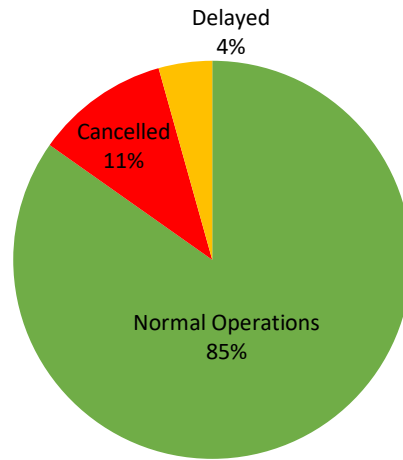
Thirty (30) passenger ships completed their operations but only 1 fast craft ferry carried passengers during its voyage in Central Visayas. 12 conventional passenger ships and 17 RoPax Ships also completed their operations but only carried cargoes during their voyage.

Meanwhile out of the 90 passenger ships, 67% were affected by the measures adopted in view of COVID-19. These measures caused either the cancellation, delay or uncompleted operations of 60 passenger ships.

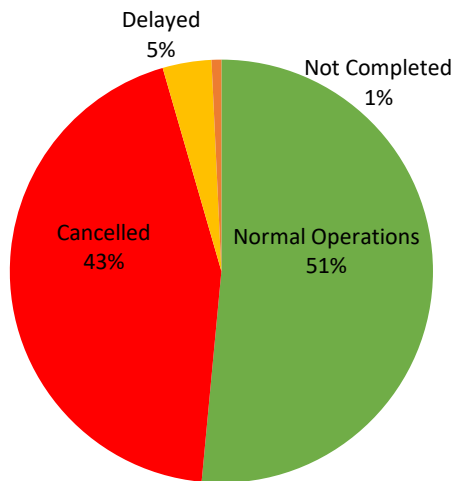
PASSENGER Ship Operations



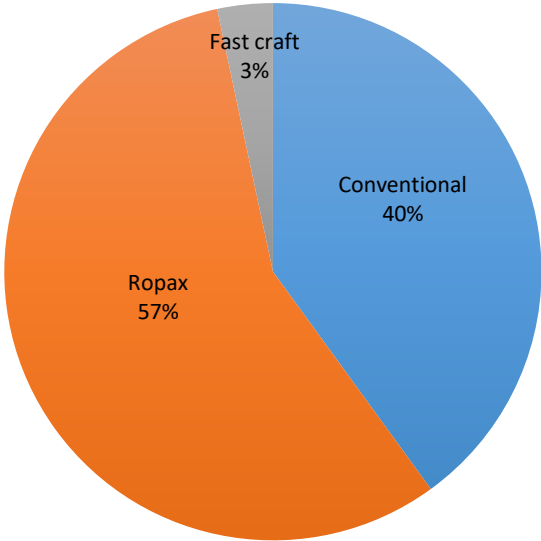
CARGO Ship Operations



PASSENGER AND CARGO Ship Operations



Passenger Ship Types under Normal Operations



Cargo Ship Types under Normal Operations

