



MARITIME INDUSTRY AUTHORITY SITUATION REPORT – 13

Passenger and Cargo Shipping Operations on 05 April 2020
amid Code Red Sublevel 2 for the COVID-19

Data generated on 05 April 2020, 3:00 PM

HIGHLIGHTS

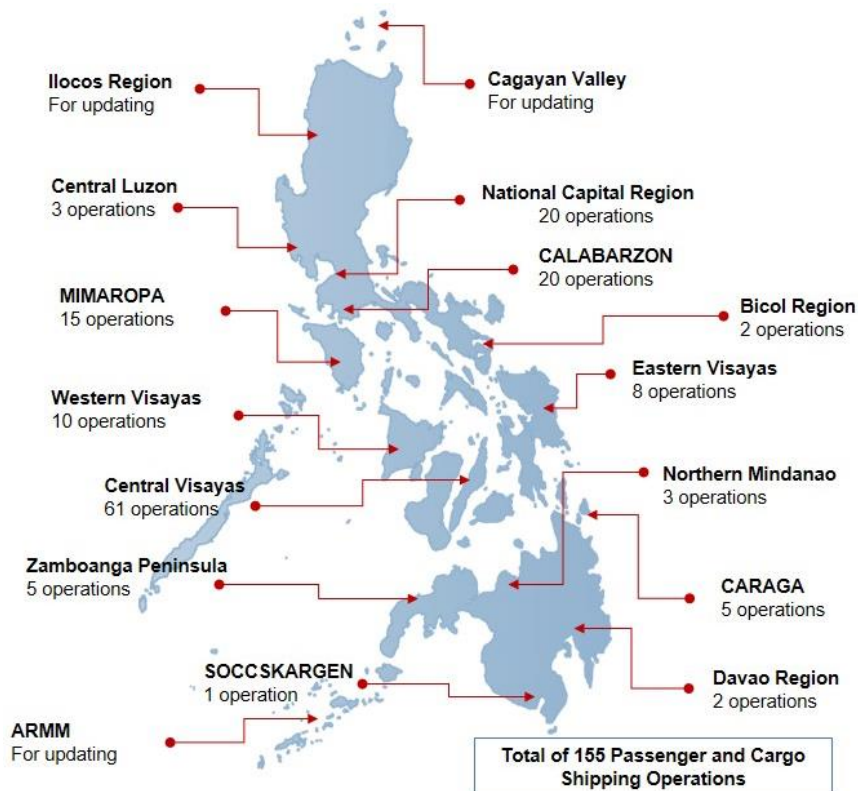
- Forty-one percent (41%) of passenger and cargo shipping operations were completed in accordance with the ships' CPC.
- Fifty-nine percent (59%) of the shipping operations were affected due to the measures implemented in view Code Red Sublevel 2 for the COVID-19.
- Operations of passenger ships were more affected compared to cargo ships. 71% of the cargo shipping operations were completed under normal conditions compared to passenger ships at 27%.
- **With cargo shipping still operational, transport of goods amid Enhanced Community Quarantine is assured.**

PASSENGER AND CARGO SHIPPING IN NUMBERS

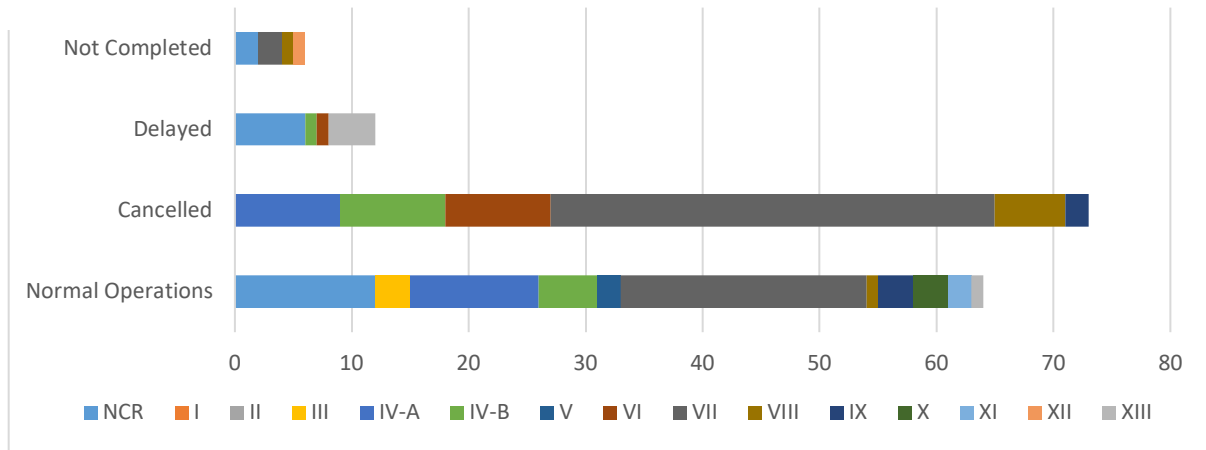
05 April 2020

- 155** Shipping Operations Recorded
- 106** Passenger Ships Operated
- 49** Cargo Ships Operated
- 64** Ships Operated Normally
- 73** Operations Cancelled
- 12** Operations Delayed
- 6** Operations Uncompleted

PASSENGER AND CARGO SHIPPING OPERATIONS IN THE PHILIPPINES AMID CODE RED SUBLEVEL 2 FOR THE COVID-19



I. STATUS OF SHIPPING OPERATIONS NATIONWIDE



On April 05, 2020, there were 155 passenger and cargo shipping operations conducted wherein 64 or 41% were completed in accordance with their Certificate of Public Convenience (CPC).

Out of the 64 operations completed under normal conditions, the reported movements were mostly in the Central Visayas Region at 33% followed by NCR at 19%.

Meanwhile, 47% of the passenger and cargo shipping operations were cancelled, all due to the community quarantine measures imposed by the different local government units governing the ships' ports of destination. Mostly affected were operations in the Visayas, particularly in the central and western regions.

Twelve (12) passenger and cargo ships or 8% encountered delays due to the additional measures adopted in view of COVID-19 such as temperature screening and inspections.

Lastly, six (6) cargo shipping operation was not completed at the time of reporting, as the respective ship was still underway.

II. STATUS OF SHIPPING OPERATIONS BY CLASSIFICATION

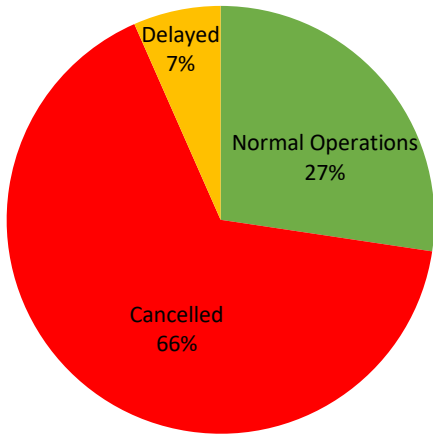
Region	Normal Operations		Cancelled		Delayed		Not Completed	
	Passenger	Cargo	Passenger	Cargo	Passenger	Cargo	Passenger	Cargo
NCR	5	7	0	0	1	5	0	2
I	0	0	0	0	0	0	0	0
II	0	0	0	0	0	0	0	0
III	0	3	0	0	0	0	0	0
IV-A	6	5	9	0	0	0	0	0
IV-B	4	1	9	0	1	0	0	0
V	2	0	0	0	0	0	0	0
VI	0	0	9	0	1	0	0	0
VII	9	12	35	3	0	0	0	2
VIII	0	1	6	0	0	0	0	1
IX	2	1	2	0	0	0	0	0
X	1	2	0	0	0	0	0	0
XI	0	2	0	0	0	0	0	0
XII	0	0	0	0	0	0	0	1
XIII	0	1	0	0	4	0	0	0
ARMM	0	0	0	0	0	0	0	0
Total	29	35	70	3	7	5	0	6

Amid the measures in place due to Code Red Sublevel 2 on COVID-19, 35 out of 49 (71%) cargo ships still operated normally - 11 are container ships, 3 general cargo ships, 2 LCT ships, 16 oil tankers and 3 RORO cargo ships.

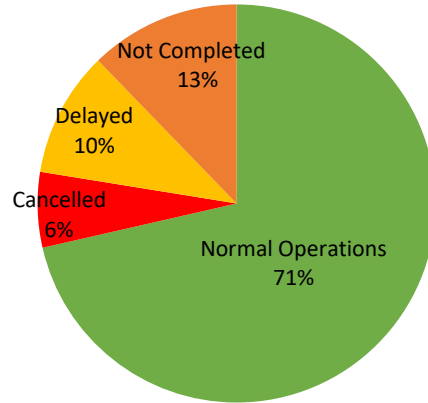
Twenty-nine (29) out of one-hundred six (106) or 27% of passenger ships completed their voyage - 16 conventional passenger ships and 13 RoPax Ships completed their operations but only carried cargoes during their voyage.

Meanwhile out of the 106 passenger ships, 73% were affected by the measures adopted in view of COVID-19. These measures caused either the cancellation and delay of operations of 77 passenger ships.

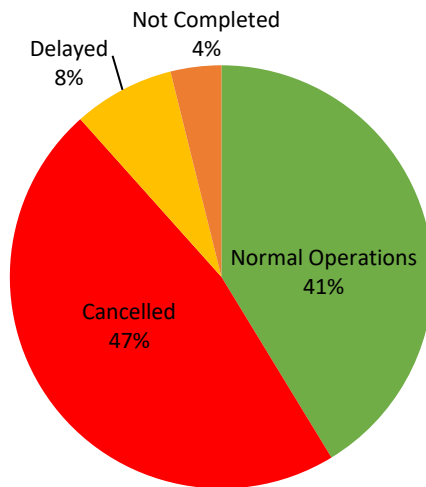
PASSENGER Ship Operations



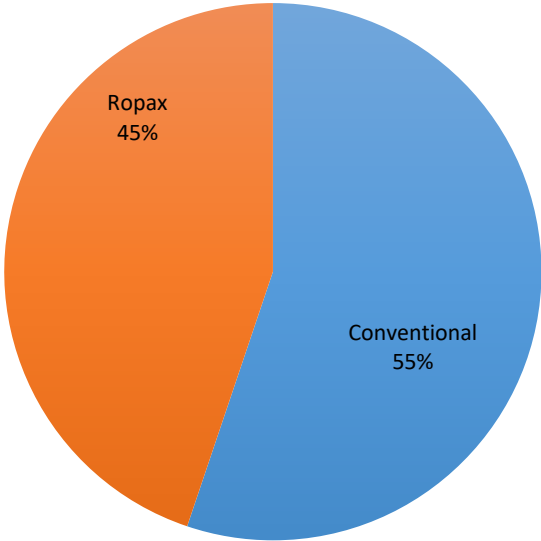
CARGO Ship Operations



PASSENGER AND CARGO Ship Operations



Passenger Ship Types under Normal Operations



Cargo Ship Types under Normal Operations

