



MARITIME INDUSTRY AUTHORITY SITUATION REPORT – 19

Passenger and Cargo Shipping Operations on 11 April 2020
amid Code Red Sublevel 2 for the COVID-19

Data generated on 11 April 2020, 3:00 PM

HIGHLIGHTS

- Forty-eight percent (48%) of passenger and cargo shipping operations were completed in accordance with the ships' CPC.
- Fifty-two percent (52%) of the shipping operations were affected due to the measures implemented in view Code Red Sublevel 2 for the COVID-19.
- Operations of passenger ships were more affected compared to cargo ships. 54% of the cargo shipping operations were completed under normal conditions compared to passenger ships at 44%.
- With cargo shipping still operational, transport of goods amid Enhanced Community Quarantine is assured.**

PASSENGER AND CARGO SHIPPING IN NUMBERS

11 April 2020

155 Shipping Operations Recorded

96 Passenger Ships Operated

59 Cargo Ships Operated

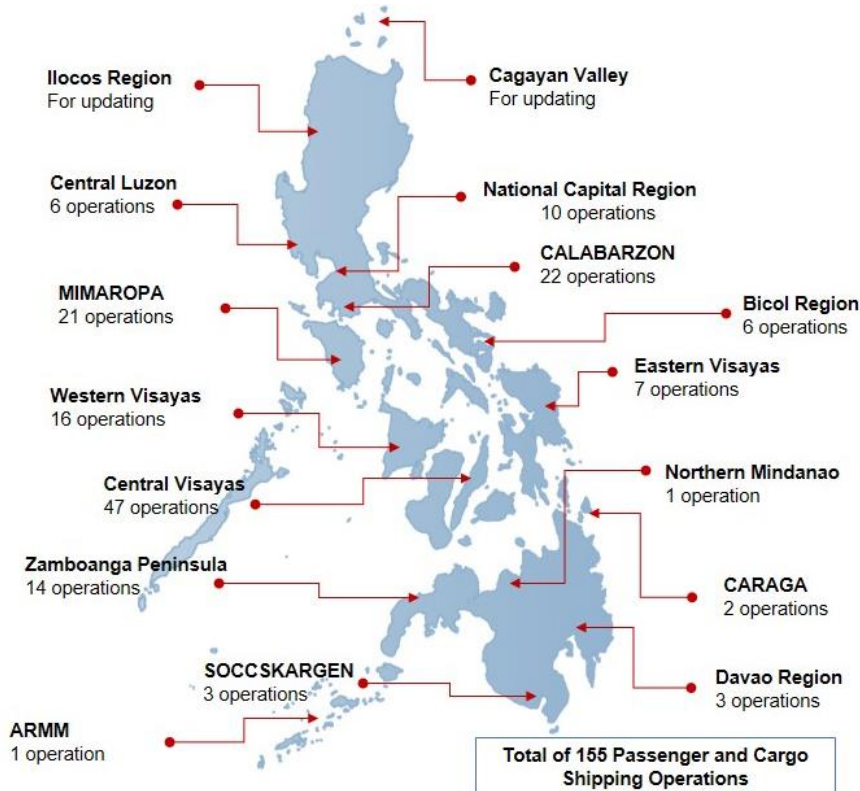
74 Ships Operated Normally

53 Operations Cancelled

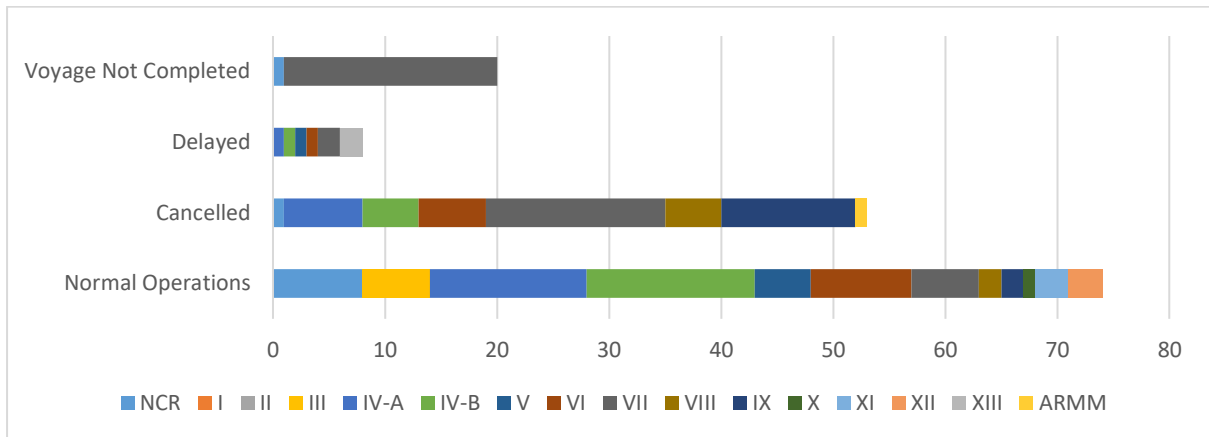
8 Operations Delayed

20 Operations Uncompleted

PASSENGER AND CARGO SHIPPING OPERATIONS IN THE PHILIPPINES AMID CODE RED SUBLEVEL 2 FOR THE COVID-19



I. STATUS OF SHIPPING OPERATIONS NATIONWIDE



On April 11, 2020, there were 155 passenger and cargo shipping operations conducted wherein 74 or 48% were completed in accordance with their Certificate of Public Convenience (CPC).

Out of the 74 operations completed under normal conditions, the reported movements were mostly in the Mimaropa Region at 20% followed by Calabarzon Region at 19%.

Meanwhile, 34% of the passenger and cargo shipping operations were cancelled, all due to the community quarantine measures imposed by the different local government units governing the ships' ports of destination. Mostly affected were operations in the Visayas, particularly in the central and western regions.

Eight (8) passenger and cargo ships or 5% encountered delays due to the additional measures adopted in view of COVID-19 such as temperature screening and inspections.

Lastly, seven (7) passenger and thirteen (13) cargo shipping operation was not completed at the time of reporting, as the respective ship was still underway.

II. STATUS OF SHIPPING OPERATIONS BY CLASSIFICATION

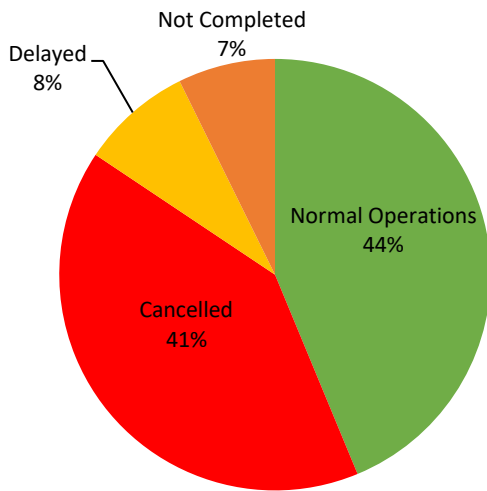
Region	Normal Operations		Cancelled		Delayed		Not Completed	
	Passenger	Cargo	Passenger	Cargo	Passenger	Cargo	Passenger	Cargo
NCR	3	5	1	0	0	0	0	1
I	0	0	0	0	0	0	0	0
II	0	0	0	0	0	0	0	0
III	0	6	0	0	0	0	0	0
IV-A	10	4	7	0	1	0	0	0
IV-B	14	1	5	0	1	0	0	0
V	5	0	0	0	1	0	0	0
VI	6	3	5	1	1	0	0	0
VII	2	4	15	1	2	0	7	12
VIII	2	0	5	0	0	0	0	0
IX	0	2	0	12	0	0	0	0
X	0	1	0	0	0	0	0	0
XI	0	3	0	0	0	0	0	0
XII	0	3	0	0	0	0	0	0
XIII	0	0	0	0	2	0	0	0
ARMM	0	0	1	0	0	0	0	0
Total	42	32	39	14	8	0	7	13

Amid the measures in place due to Code Red Sublevel 2 on COVID-19, 32 out of 59 (54%) cargo ships still operated normally - 7 are container ships, 3 general cargo ships, 20 oil tankers, 2 ro-ro cargo ships and 1 other type.

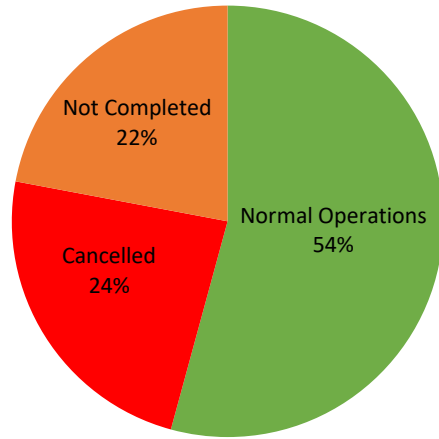
Forty-two (42) passenger ships completed their voyage – 34 conventional passenger ships, 7 RoPax ships and 1 other type completed their operations but mostly only carried cargoes during their voyage.

Meanwhile out of the 96 passenger ships, 56% were affected by the measures adopted in view of COVID-19. These measures caused either the cancellation, delay or uncompleted operations of 54 passenger ships.

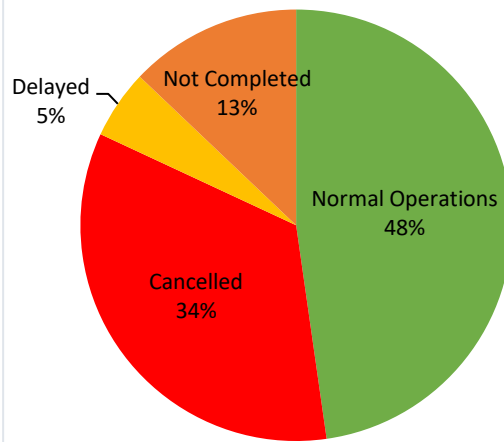
PASSENGER Ship Operations



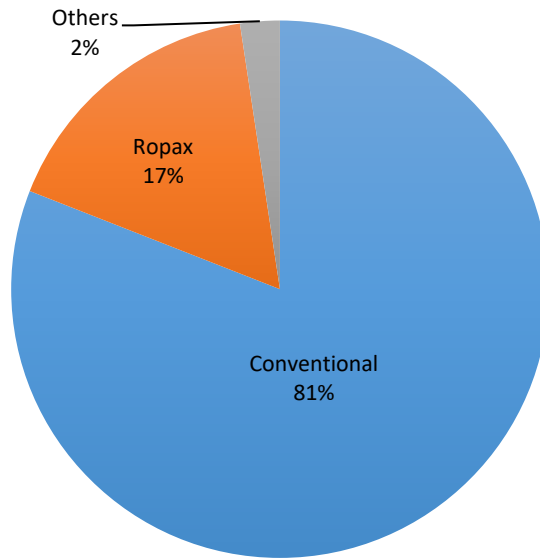
CARGO Ship Operations



PASSENGER AND CARGO Ship Operations



Passenger Ship Types under Normal Operations



Cargo Ship Types under Normal Operations

