



## MARITIME INDUSTRY AUTHORITY WEEKLY SUMMARY SITUATION REPORT – 02

Passenger and Cargo Shipping Operations from March 26 to April 01, 2020  
amid Code Red Sublevel 2 for the COVID-19  
*Data generated on April 01, 2020, 3:35 PM*

### HIGHLIGHTS

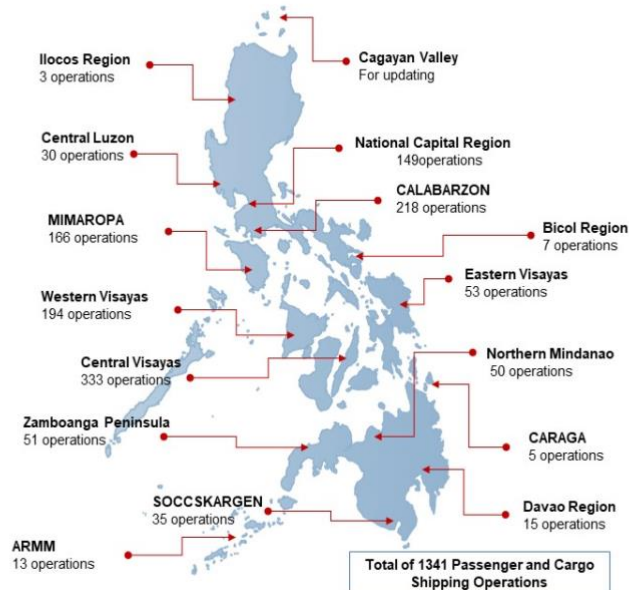
- Forty-eight percent (48%) of passenger and cargo shipping operations were completed in accordance with the ships' CPC.
- Fifty-two percent (52%) of the shipping operations were affected due to the measures implemented in view Code Red Sublevel 2 for the COVID-19.
- Operations of passenger ships were more affected compared to cargo ships. 82% of the cargo shipping operations were completed under normal conditions compared to passenger ships at 34%.
- Daily average passenger and cargo ship operations are 161 completed under normal conditions, 152 cancelled trips, 16 delayed and 8 not completed voyages.
- With cargo shipping still operational, transport of goods amid Enhanced Community Quarantine is assured.**

### PASSENGER AND CARGO SHIPPING IN NUMBERS

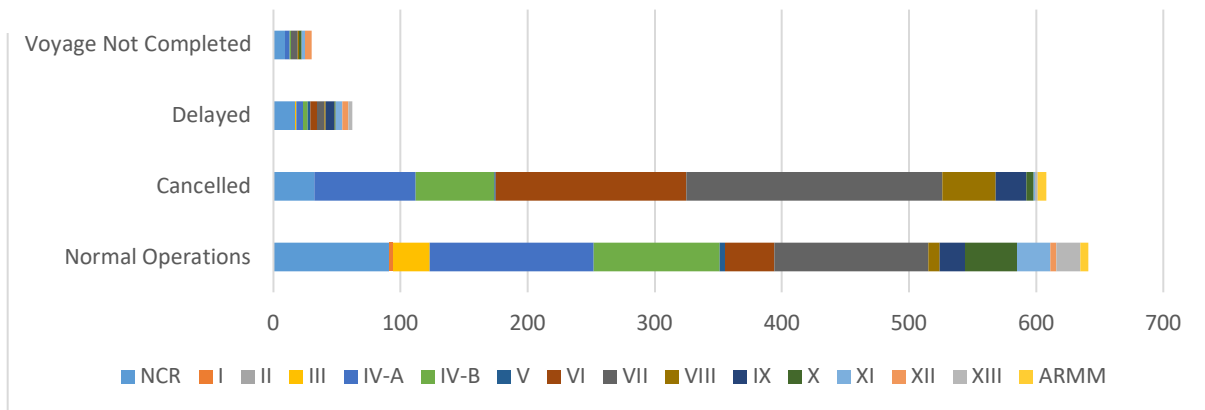
March 26 to April 01, 2020

- 1341** Shipping Operations Recorded
- 968** Passenger Ships Operated
- 373** Cargo Ships Operated
- 641** Ships Operated Normally
- 608** Operations Cancelled
- 62** Operations Delayed
- 30** Operations Uncompleted

### PASSENGER AND CARGO SHIPPING OPERATIONS IN THE PHILIPPINES AMID CODE RED SUBLEVEL 2 FOR THE COVID-19



## I. STATUS OF SHIPPING OPERATIONS NATIONWIDE



From March 26 to April 01, 2020, there were 1,341 passenger and cargo shipping operations conducted wherein 968 or 48% were completed in accordance with their Certificate of Public Convenience (CPC).

Out of the 1,341 operations completed under normal conditions, the reported movements were mostly in the Calabarzon Region at 20% followed by the Central Visayas Region at 19%.

Only 25 out of the 335 or 7% of passenger ships that completed their operations carried passengers during their voyage. All of the 25 vessels are fast craft ferries, 11 of which operated in Central Visayas, 1 in Mimaropa Region, 1 in Eastern Visayas and 12 in the Caraga Region. The rest of the passenger ships only carried cargoes during their voyage.

Meanwhile, 45% of the passenger and cargo shipping operations were cancelled, all due to the community quarantine measures imposed by the different local government units governing the ships' ports of destination. Mostly affected were operations in the Visayas, particularly in the central and western regions.

Sixty-two (62) passenger and cargo ships or 5% encountered delays due to the additional measures adopted in view of COVID-19 such as temperature screening and inspections.

Lastly, five (5) passenger and twenty-five (25) cargo shipping operations were not completed at the time of reporting, mostly as respective ships were still underway.

## II. STATUS OF SHIPPING OPERATIONS BY CLASSIFICATION

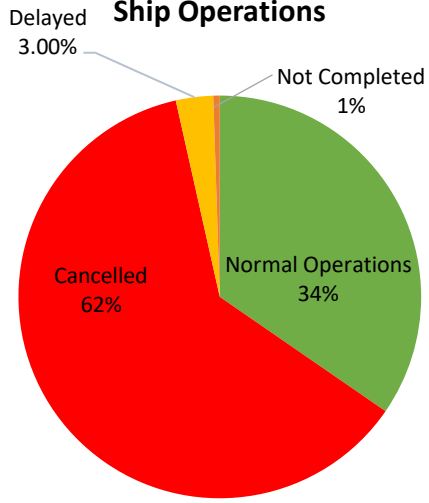
Region	Normal Operations		Cancelled		Delayed		Not Completed	
	Passenger	Cargo	Passenger	Cargo	Passenger	Cargo	Passenger	Cargo
<b>NCR</b>	23	68	30	2	1	16	0	9
<b>I</b>	0	3	0	0	0	0	0	0
<b>II</b>	0	0	0	0	0	0	0	0
<b>III</b>	0	29	0	0	0	1	0	0
<b>IV-A</b>	98	31	80	0	5	0	3	1
<b>IV-B</b>	92	7	62	0	4	0	1	0
<b>V</b>	3	1	1	0	2	0	0	0
<b>VI</b>	20	19	149	1	5	0	0	0
<b>VII</b>	55	66	201	0	5	1	1	4
<b>VIII</b>	1	8	42	0	0	1	0	1
<b>IX</b>	9	11	19	5	4	3	0	0
<b>X</b>	14	27	6	0	0	1	0	2
<b>XI</b>	10	16	0	1	0	5	0	3
<b>XII</b>	0	5	0	0	0	5	0	5
<b>XIII</b>	9	10	2	0	3	0	0	0
<b>ARMM</b>	1	5	7	0	0	0	0	0
<b>Total</b>	<b>335</b>	<b>306</b>	<b>599</b>	<b>9</b>	<b>29</b>	<b>33</b>	<b>5</b>	<b>25</b>

Amid the measures in place due to Code Red Sublevel 2 on COVID-19, 306 out of 373 (82%) cargo ships still operated normally - 131 are container ships, 13 general cargo ships, 10 LCT ships, 103 oil tankers, 30 RORO cargo ships, and 19 other types.

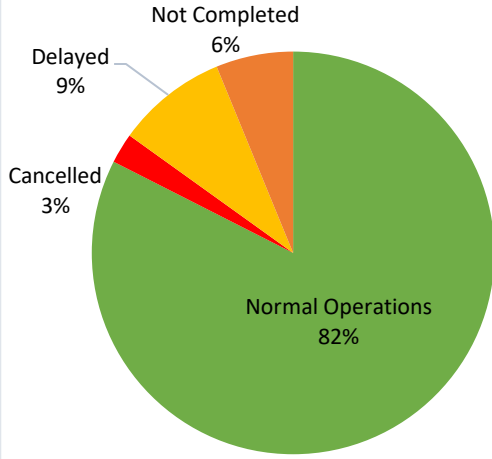
Five hundred forty-two (542) passenger ships completed their operations during this period but only 96 fast craft ferries carried passengers during their voyage. 249 conventional passenger ships, 180 RoPax ships, and 17 other types also completed their operations but only carried cargoes during their voyage.

Meanwhile out of the 968 passenger ships, 66% were affected by the measures adopted in view of COVID-19. These measures caused either the cancellation, delay or uncompleted operations of 633 passenger ships.

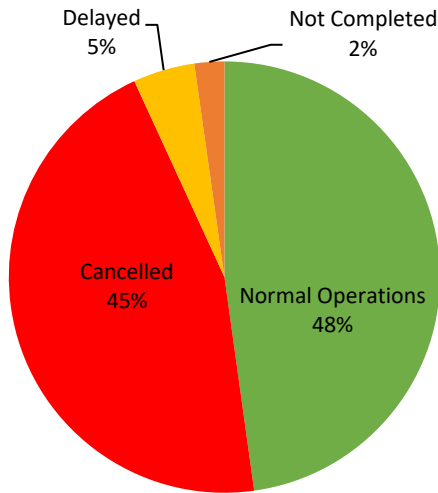
### PASSENGER Ship Operations



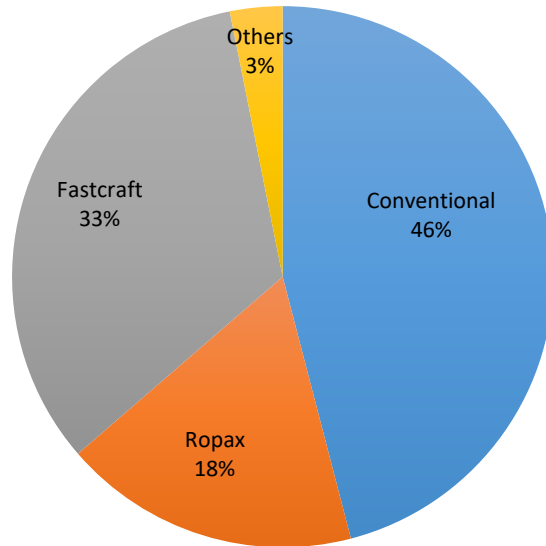
### CARGO Ship Operations



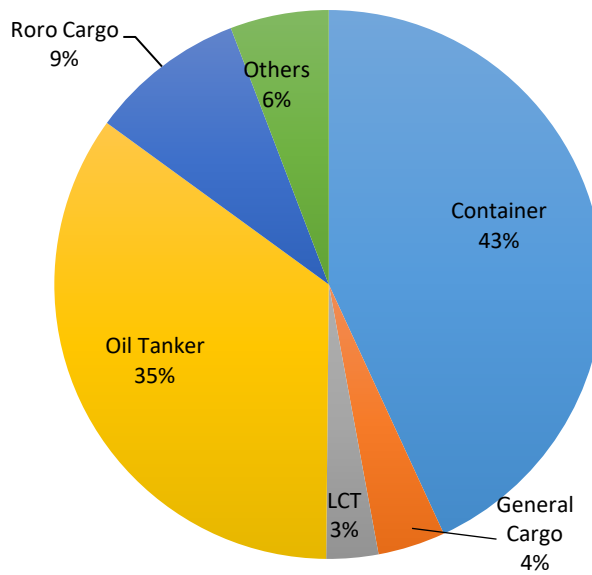
### PASSENGER AND CARGO Ship Operations



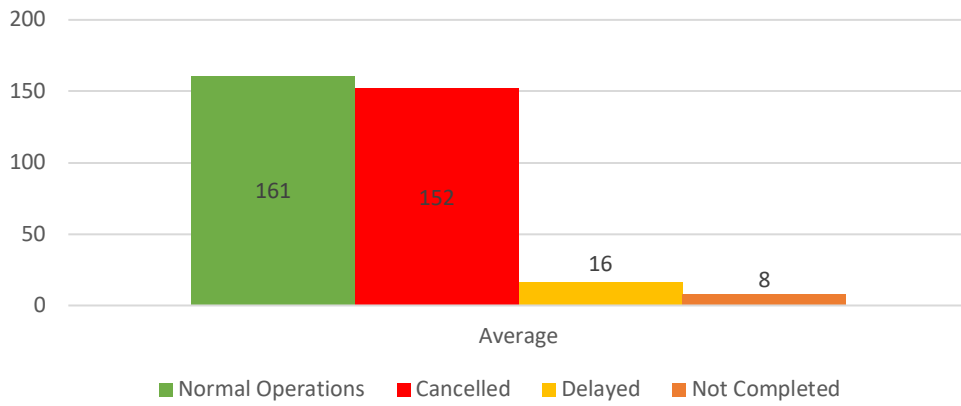
### Passenger Ship Types under Normal Operations



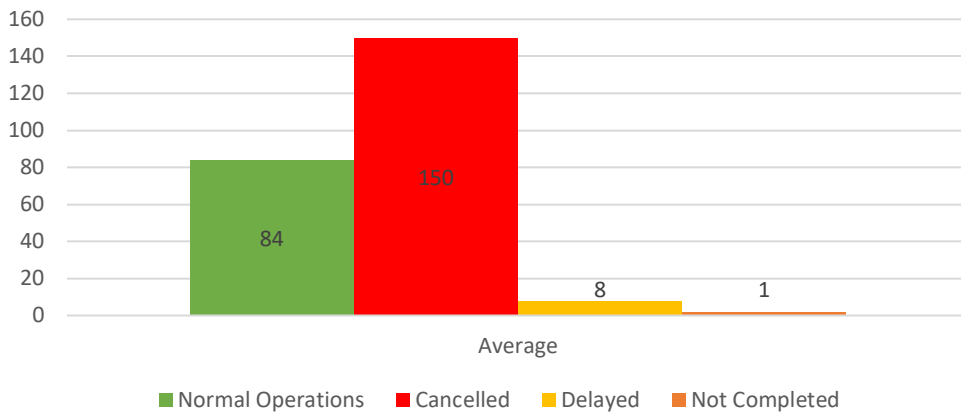
### Cargo Ship Types under Normal Operations



### Daily Average Passenger and Cargo Ship Operation



### Daily Average Passenger Ship Operation



### Daily Average Cargo Ship Operation

