



MARITIME INDUSTRY AUTHORITY WEEKLY SUMMARY SITUATION REPORT – 03

Passenger and Cargo Shipping Operations from April 02 to 08, 2020
amid Code Red Sublevel 2 for the COVID-19

Data generated on April 08, 2020, 3:00 PM

HIGHLIGHTS

- Forty-eight percent (48%) of passenger and cargo shipping operations were completed in accordance with the ships' CPC.
- Fifty-two percent (52%) of the shipping operations were affected due to the measures implemented in view Code Red Sublevel 2 for the COVID-19.
- Operations of passenger ships were more affected compared to cargo ships. 76% of the cargo shipping operations were completed under normal conditions compared to passenger ships at 36%.
- Daily average passenger and cargo ship operations are 168 completed under normal conditions, 147 cancelled trips, 21 delayed and 14 not completed voyages.
- **With cargo shipping still operational, transport of goods amid Enhanced Community Quarantine is assured.**

PASSENGER AND CARGO SHIPPING IN NUMBERS

April 02 to April 08, 2020

1401 Shipping Operations Recorded

998 Passenger Ships Operated

403 Cargo Ships Operated

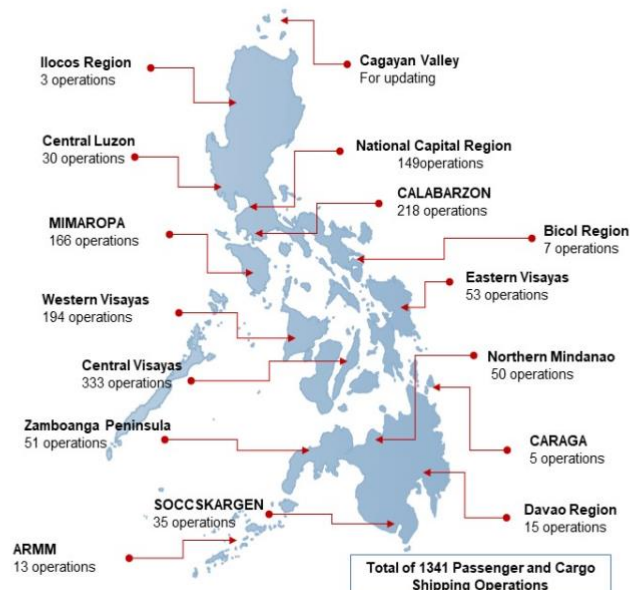
671 Ships Operated Normally

589 Operations Cancelled

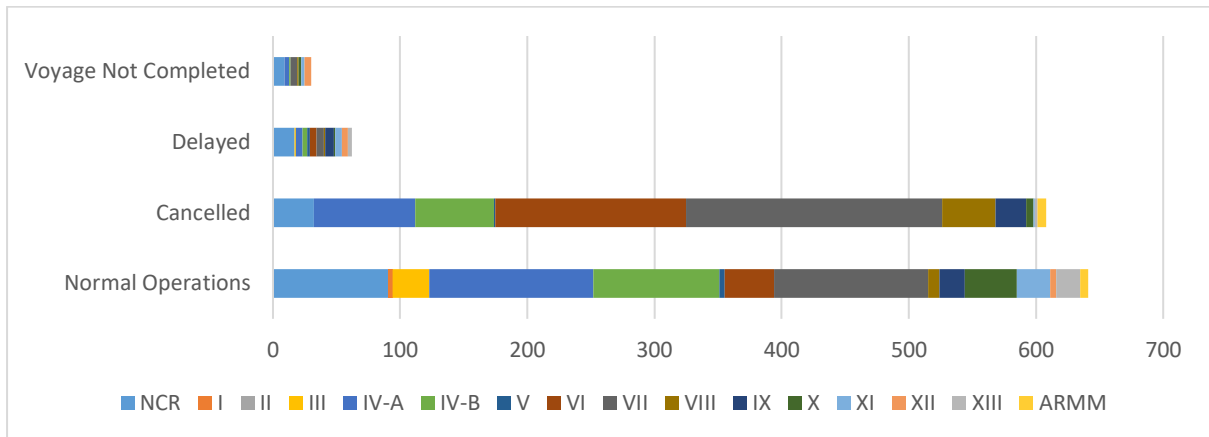
86 Operations Delayed

55 Operations Uncompleted

PASSENGER AND CARGO SHIPPING OPERATIONS IN THE PHILIPPINES AMID CODE RED SUBLEVEL 2 FOR THE COVID-19



I. STATUS OF SHIPPING OPERATIONS NATIONWIDE



From April 02 to April 08, 2020, there were 1,401 passenger and cargo shipping operations conducted wherein 671 or 48% were completed in accordance with their Certificate of Public Convenience (CPC).

Out of the 671 operations completed under normal conditions, the reported movements were mostly in the Central Visayas Region at 29% followed by the Calabarzon Region at 16%.

Meanwhile, 42% of the passenger and cargo shipping operations were cancelled, all due to the community quarantine measures imposed by the different local government units governing the ships' ports of destination. Mostly affected were operations in the Visayas, particularly in the central and western regions.

Eighty-six (86) passenger and cargo ships or 6% encountered delays due to the additional measures adopted in view of COVID-19 such as temperature screening and inspections.

Lastly, twenty-one (21) passenger and thirty-four (34) cargo shipping operations were not completed at the time of reporting, mostly as respective ships were still underway.

II. STATUS OF SHIPPING OPERATIONS BY CLASSIFICATION

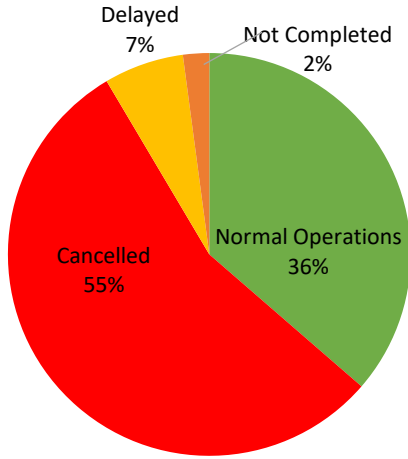
Region	Normal Operations		Cancelled		Delayed		Not Completed	
	Passenger	Cargo	Passenger	Cargo	Passenger	Cargo	Passenger	Cargo
NCR	21	48	11	0	2	16	0	5
I	0	0	0	0	0	0	0	0
II	0	0	0	0	0	0	0	0
III	0	19	0	0	0	0	0	0
IV-A	78	29	51	0	1	1	2	0
IV-B	93	7	47	0	4	1	0	0
V	16	0	1	0	4	0	0	0
VI	47	22	111	1	27	0	0	0
VII	66	126	247	38	8	2	14	26
VIII	2	3	49	0	0	0	0	1
IX	14	5	13	0	2	0	0	0
X	17	18	6	0	2	0	5	1
XI	0	25	0	0	0	0	0	0
XII	0	3	0	0	0	1	0	1
XIII	9	1	9	0	14	0	0	0
ARMM	0	2	5	0	0	1	0	0
Total	363	308	550	39	64	22	21	34

Amid the measures in place due to Code Red Sublevel 2 on COVID-19, 308 out of 403 (76%) cargo ships still operated normally - 172 are container ships, 45 general cargo ships, 90 LCT ships, 175 oil tankers, 58 RORO cargo ships, and 15 other types.

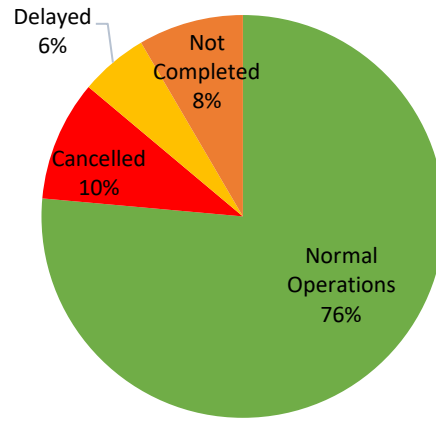
Three-hundred sixty-three (363) passenger ships completed their operations during this period but only 96 fast craft ferries carried passengers during their voyage. 249 conventional passenger ships, 180 RoPax ships, and 17 other types also completed their operations but only carried cargoes during their voyage.

Meanwhile out of the 998 passenger ships, 64% were affected by the measures adopted in view of COVID-19. These measures caused either the cancellation, delay or uncompleted operations of 635 passenger ships.

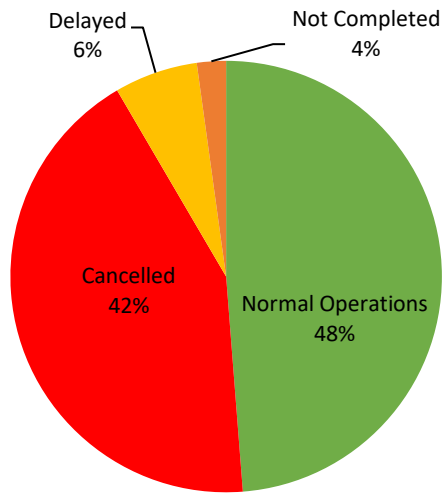
PASSENGER Ship Operations



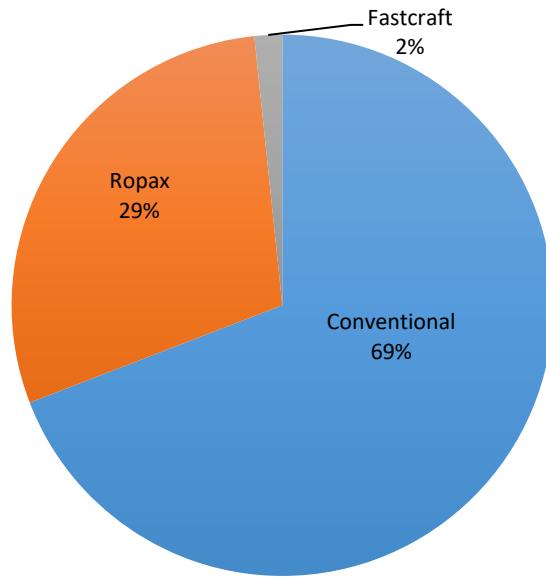
CARGO Ship Operations



PASSENGER AND CARGO Ship Operations



Passenger Ship Types under Normal Operations



Cargo Ship Types under Normal Operations

