



## MARITIME INDUSTRY AUTHORITY WEEKLY SUMMARY SITUATION REPORT – 04

Passenger and Cargo Shipping Operations from April 09 to 15, 2020  
amid Code Red Sublevel 2 for the COVID-19

*Data generated on April 15, 2020, 3:00 PM*

### HIGHLIGHTS

- Forty-seven percent (47%) of passenger and cargo shipping operations were completed in accordance with the ships' CPC.
- Fifty-three percent (53%) of the shipping operations were affected due to the measures implemented in view Code Red Sublevel 2 for the COVID-19.
- Operations of passenger ships were more affected compared to cargo ships. 71% of the cargo shipping operations were completed under normal conditions compared to passenger ships at 39%.
- Daily average passenger and cargo ship operations are 182 completed under normal conditions, 156 cancelled trips, 20 delayed and 30 not completed voyages.
- **With cargo shipping still operational, transport of goods amid Enhanced Community Quarantine is assured.**

### PASSENGER AND CARGO SHIPPING IN NUMBERS

April 09 to April 15, 2020

**1548** Shipping Operations Recorded

**1156** Passenger Ships Operated

**392** Cargo Ships Operated

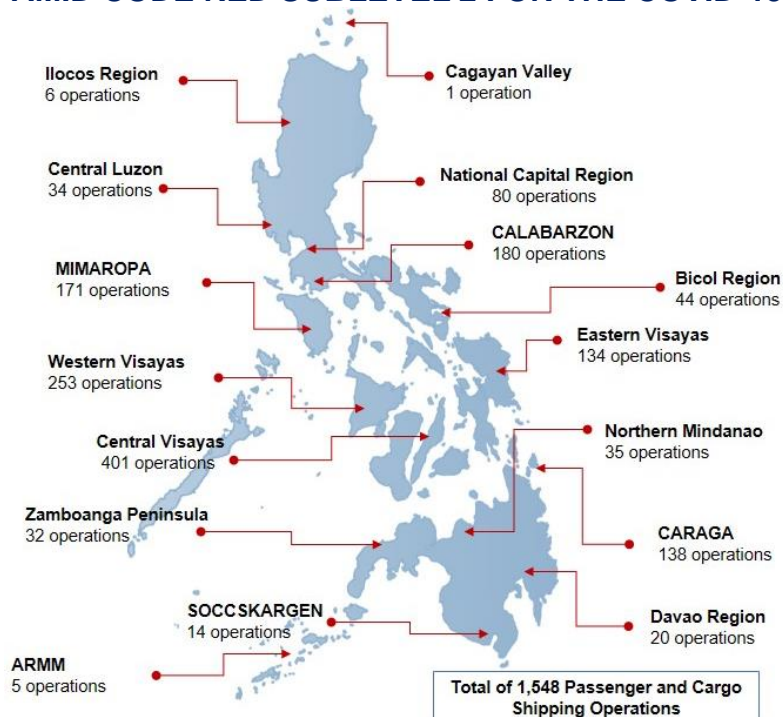
**728** Ships Operated Normally

**622** Operations Cancelled

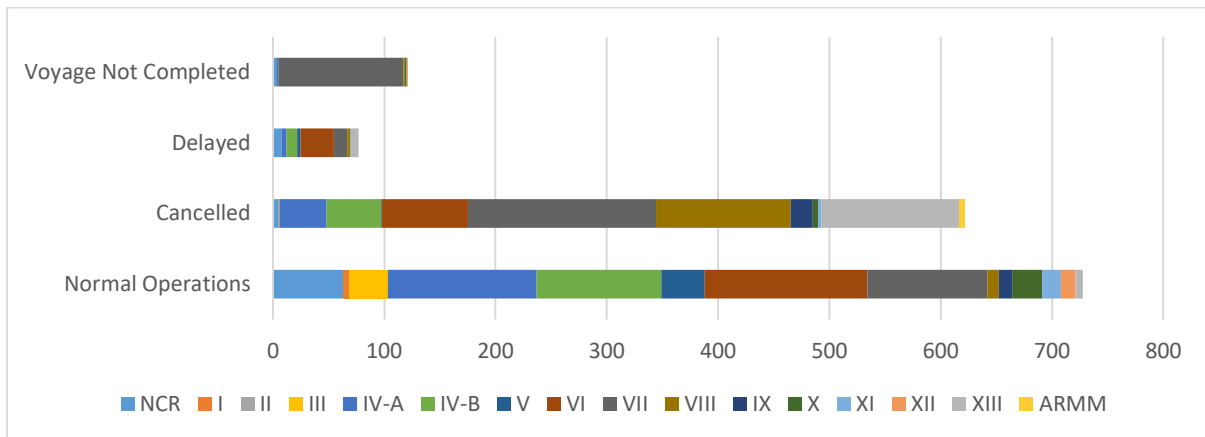
**77** Operations Delayed

**121** Operations Uncompleted

### PASSENGER AND CARGO SHIPPING OPERATIONS IN THE PHILIPPINES AMID CODE RED SUBLEVEL 2 FOR THE COVID-19



## I. STATUS OF SHIPPING OPERATIONS NATIONWIDE



From April 09 to April 15, 2020, there were 1,548 passenger and cargo shipping operations conducted wherein 728 or 47% were completed in accordance with their Certificate of Public Convenience (CPC).

Out of the 728 operations completed under normal conditions, the reported movements were mostly in the Central Visayas Region at 20% followed by the Calabarzon Region at 18%.

Meanwhile, 40% of the passenger and cargo shipping operations were cancelled, all due to the community quarantine measures imposed by the different local government units governing the ships' ports of destination. Mostly affected were operations in the Central Visayas Region and Caraga Region.

Seventy-seven (77) passenger and cargo ships or 5% encountered delays due to the additional measures adopted in view of COVID-19 such as temperature screening and inspections.

Lastly, forty-five (45) passenger and seventy-six (76) cargo shipping operations were not completed at the time of reporting, mostly as respective ships were still underway.

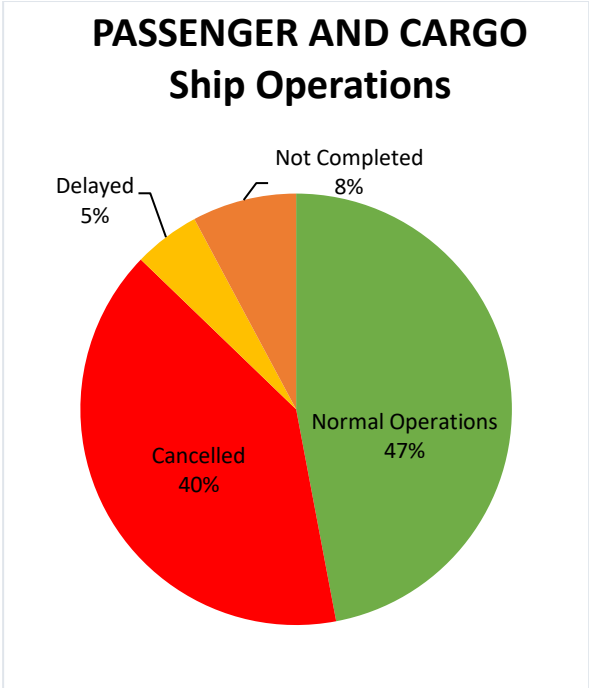
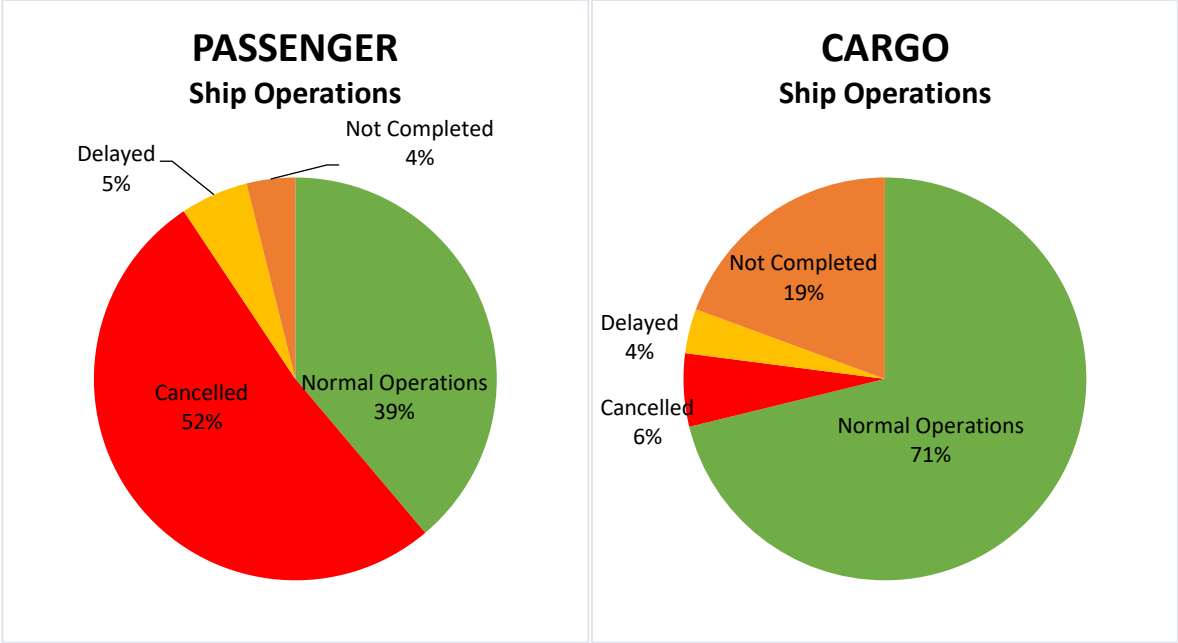
## II. STATUS OF SHIPPING OPERATIONS BY CLASSIFICATION

Region	Normal Operations		Cancelled		Delayed		Not Completed	
	Passenger	Cargo	Passenger	Cargo	Passenger	Cargo	Passenger	Cargo
<b>NCR</b>	17	46	5	0	0	8	0	4
<b>I</b>	0	6	0	0	0	0	0	0
<b>II</b>	0	0	1	0	0	0	0	0
<b>III</b>	0	34	0	0	0	0	0	0
<b>IV-A</b>	103	31	42	0	4	0	0	0
<b>IV-B</b>	103	9	49	0	8	2	0	0
<b>V</b>	36	3	1	0	3	0	1	0
<b>VI</b>	129	17	73	4	30	0	0	0
<b>VII</b>	36	72	162	7	9	3	42	70
<b>VIII</b>	4	6	121	0	1	1	0	1
<b>IX</b>	8	4	8	12	0	0	0	0
<b>X</b>	7	20	5	0	1	0	2	0
<b>XI</b>	0	17	3	0	0	0	0	0
<b>XII</b>	0	13	0	0	0	0	0	1
<b>XIII</b>	6	1	124	0	7	0	0	0
<b>ARMM</b>	0	0	5	0	0	0	0	0
<b>Total</b>	<b>449</b>	<b>279</b>	<b>599</b>	<b>23</b>	<b>63</b>	<b>14</b>	<b>45</b>	<b>76</b>

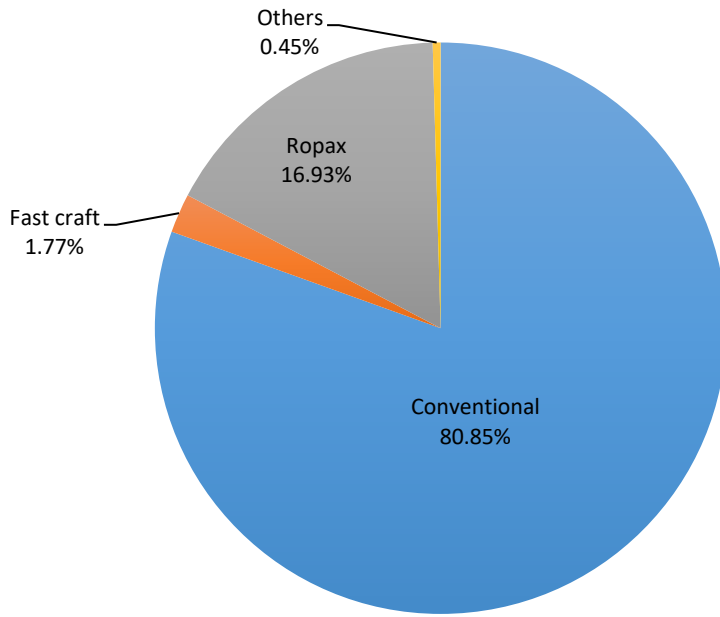
Amid the measures in place due to Code Red Sublevel 2 on COVID-19, 279 out of 392 (71%) cargo ships still operated normally – 3 bulk carriers, 2 chemical tankers, 78 are container ships, 27 general cargo ships, 29 LCT ships, 113 oil tankers, 12 RORO cargo ships, and 15 other types.

Four hundred forty-nine (449) passenger ships completed their operations - 363 conventional passenger ships, 8 fast craft ferries, 76 RoPax ships, and 2 other types completed their operations but mostly only carried cargoes during their voyage.

Meanwhile out of the 1156 passenger ships, 61% were affected by the measures adopted in view of COVID-19. These measures caused either the cancellation, delay or uncompleted operations of 707 passenger ships.



### Passenger Ship Types under Normal Operations



### Cargo Ship Types under Normal Operations

