



## MARITIME INDUSTRY AUTHORITY WEEKLY SUMMARY SITUATION REPORT – 05

Passenger and Cargo Shipping Operations from April 17 to 23, 2020  
amid Code Red Sublevel 2 for the COVID-19  
*Data generated on April 23, 2020, 1:00 PM*

### HIGHLIGHTS

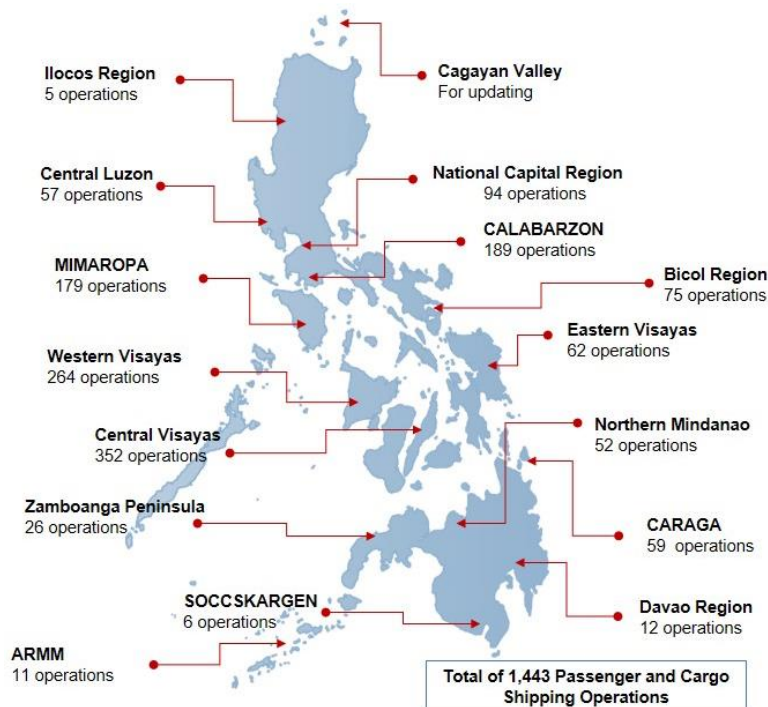
- Fifty-eight percent (58%) of passenger and cargo shipping operations were completed in accordance with the ships' CPC.
- Forty-two percent (42%) of the shipping operations were affected due to the measures implemented in view Code Red Sublevel 2 for the COVID-19.
- Operations of passenger ships were more affected compared to cargo ships. 85% of the cargo shipping operations were completed under normal conditions compared to passenger ships at 45%.
- Daily average passenger and cargo ship operations are 211 completed under normal conditions, 113 cancelled trips, 20 delayed and 17 not completed voyages.
- **With cargo shipping still operational, transport of goods amid Enhanced Community Quarantine is assured.**

### PASSENGER AND CARGO SHIPPING IN NUMBERS

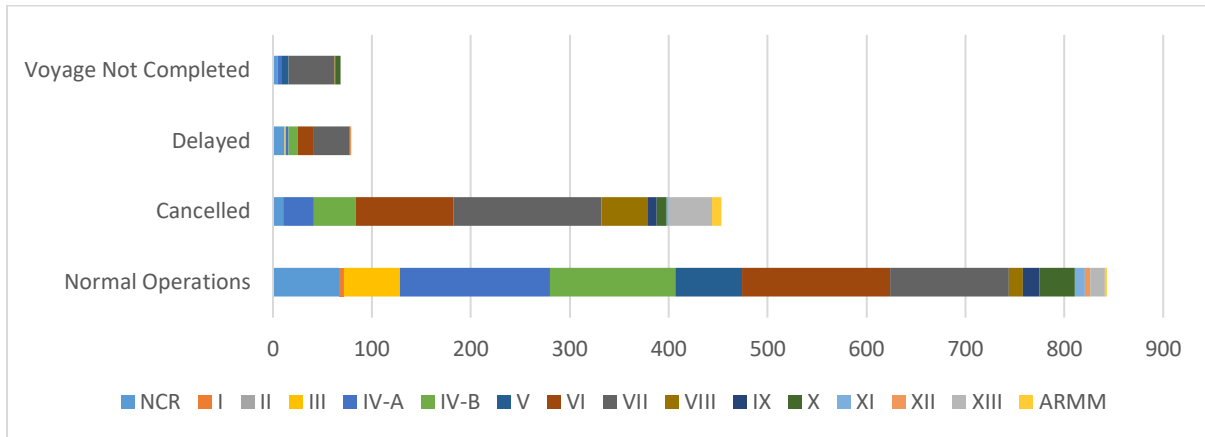
April 17 to April 23, 2020

- 1443** Shipping Operations Recorded
- 954** Passenger Ships Operated
- 489** Cargo Ships Operated
- 843** Ships Operated Normally
- 453** Operations Cancelled
- 79** Operations Delayed
- 68** Operations Uncompleted

### PASSENGER AND CARGO SHIPPING OPERATIONS IN THE PHILIPPINES AMID CODE RED SUBLEVEL 2 FOR THE COVID-19



## I. STATUS OF SHIPPING OPERATIONS NATIONWIDE



From April 17 to April 23, 2020, there were 1,443 passenger and cargo shipping operations conducted wherein 843 or 58% were completed in accordance with their Certificate of Public Convenience (CPC).

Out of the 843 operations completed under normal conditions, the reported movements were mostly in the Calabarzon Region at 18% followed by the Western Visayas Region at 17%.

Meanwhile, 31% of the passenger and cargo shipping operations were cancelled, all due to the community quarantine measures imposed by the different local government units governing the ships' ports of destination. Mostly affected were operations in the Central Visayas Region and Western Visayas Region.

Seventy-nine (79) passenger and cargo ships or 5% encountered delays due to the additional measures adopted in view of COVID-19 such as temperature screening and inspections.

Lastly, thirty-one (31) passenger and thirty-seven (37) cargo shipping operations were not completed at the time of reporting, mostly as respective ships were still underway.

## II. STATUS OF SHIPPING OPERATIONS BY CLASSIFICATION

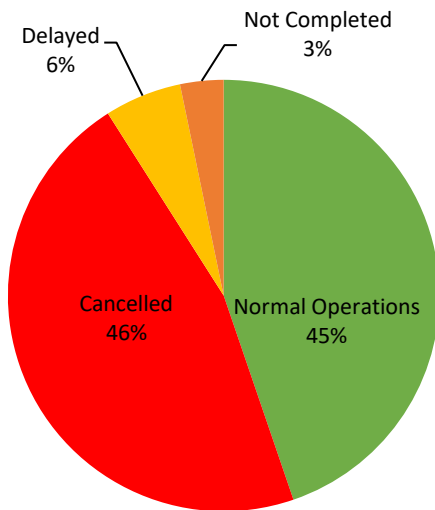
Region	Normal Operations		Cancelled		Delayed		Not Completed	
	Passenger	Cargo	Passenger	Cargo	Passenger	Cargo	Passenger	Cargo
<b>NCR</b>	17	50	10	0	0	12	0	5
<b>I</b>	0	5	0	0	0	0	0	0
<b>II</b>	0	0	0	0	0	0	0	0
<b>III</b>	0	56	0	0	0	1	0	0
<b>IV-A</b>	94	58	31	0	3	0	3	0
<b>IV-B</b>	107	20	43	0	3	6	0	0
<b>V</b>	46	21	0	0	0	0	7	1
<b>VI</b>	114	36	92	6	16	0	0	0
<b>VII</b>	22	98	144	6	32	4	18	28
<b>VIII</b>	1	13	47	0	0	0	0	1
<b>IX</b>	10	7	9	0	0	0	0	0
<b>X</b>	6	30	10	0	1	0	3	2
<b>XI</b>	1	9	2	0	0	0	0	0
<b>XII</b>	2	3	0	0	0	1	0	0
<b>XIII</b>	7	8	44	0	0	0	0	0
<b>ARMM</b>	0	2	9	0	0	0	0	0
<b>Total</b>	<b>427</b>	<b>416</b>	<b>441</b>	<b>12</b>	<b>55</b>	<b>24</b>	<b>31</b>	<b>37</b>

Amid the measures in place due to Code Red Sublevel 2 on COVID-19, 416 out of 489 (85%) cargo ships still operated normally – 3 bulk carriers, 2 chemical tankers, 78 are container ships, 27 general cargo ships, 29 LCT ships, 113 oil tankers, 12 RORO cargo ships, and 15 other types.

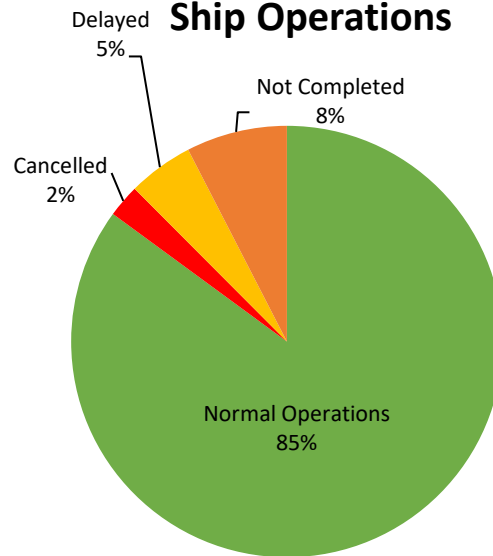
Four hundred twenty-seven (427) passenger ships completed their operations - 363 conventional passenger ships, 8 fast craft ferries, 76 RoPax ships, and 2 other types completed their operations but mostly only carried cargoes during their voyage.

Meanwhile out of the 954 passenger ships, 55% were affected by the measures adopted in view of COVID-19. These measures caused either the cancellation, delay or uncompleted operations of 527 passenger ships.

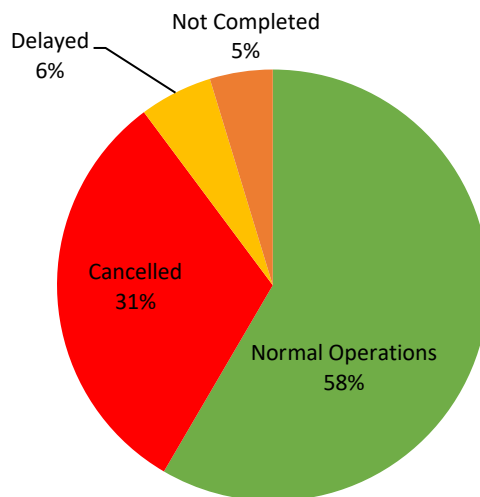
### PASSENGER Ship Operations



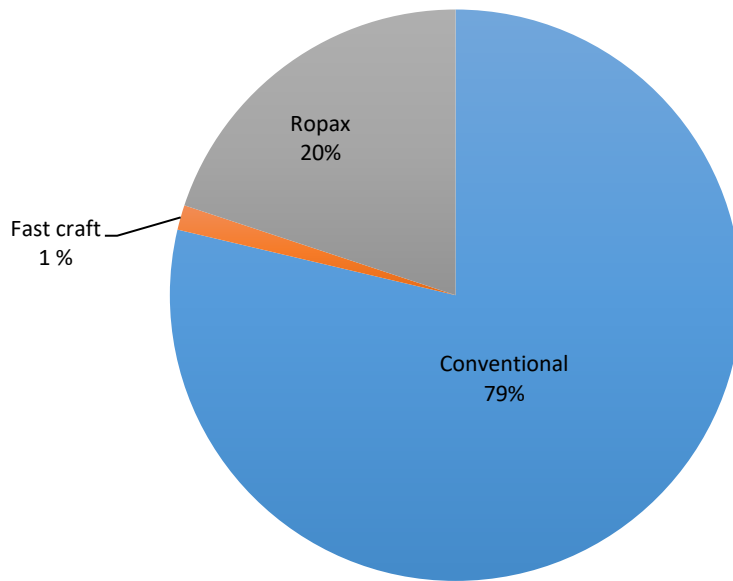
### CARGO Ship Operations



### PASSENGER and CARGO Ship Operations



## Passenger Ship Types under Normal Operations



## Cargo Ship Types under Normal Operations

