



MARITIME INDUSTRY AUTHORITY WEEKLY SUMMARY SITUATION REPORT – 06

Passenger and Cargo Shipping Operations from April 24 to 30, 2020
amid Code Red Sublevel 2 for the COVID-19
Data generated on April 30, 2020, 1:00 PM

HIGHLIGHTS

- Sixty-five percent (65%) of passenger and cargo shipping operations were completed in accordance with the ships' CPC.
- Thirty-five percent (35%) of the shipping operations were affected due to the measures implemented in view Code Red Sublevel 2 for the COVID-19.
- Operations of passenger ships were more affected compared to cargo ships. 85% of the cargo shipping operations were completed under normal conditions compared to passenger ships at 55%.
- Daily average passenger and cargo ship operations are 250 completed under normal conditions, 94 cancelled trips, 19 delayed and 19 not completed voyages.
- **With cargo shipping still operational, transport of goods amid Enhanced Community Quarantine is assured.**

PASSENGER AND CARGO SHIPPING IN NUMBERS

April 24 to April 30, 2020

1529 Shipping Operations Recorded

999 Passenger Ships Operated

530 Cargo Ships Operated

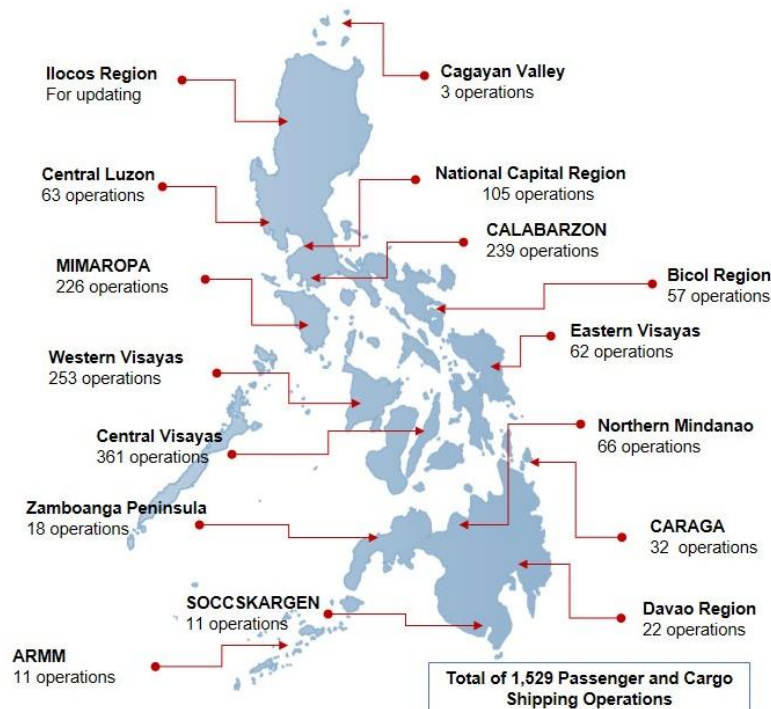
1001 Ships Operated Normally

377 Operations Cancelled

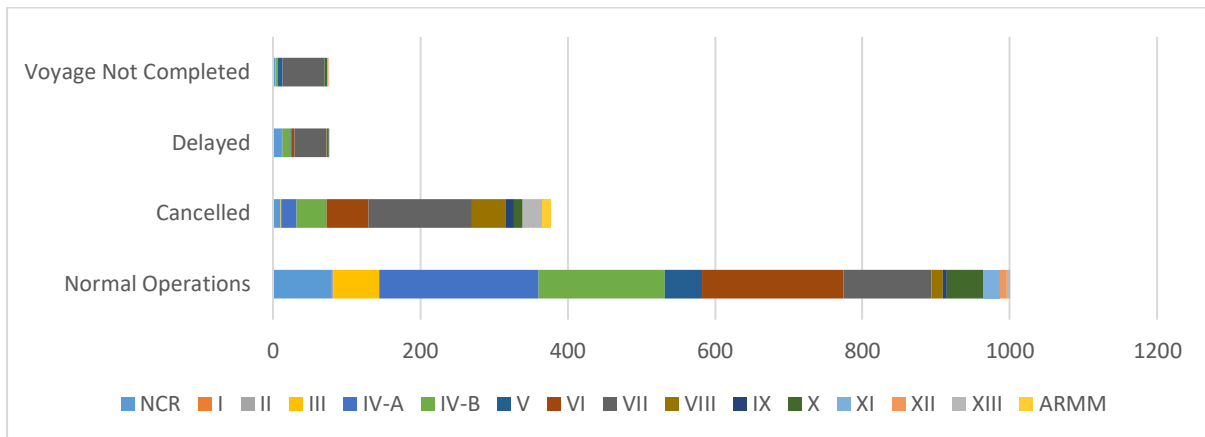
76 Operations Delayed

75 Operations Uncompleted

PASSENGER AND CARGO SHIPPING OPERATIONS IN THE PHILIPPINES AMID CODE RED SUBLEVEL 2 FOR THE COVID-19



I. STATUS OF SHIPPING OPERATIONS NATIONWIDE



From April 24 to April 30, 2020, there were 1,529 passenger and cargo shipping operations conducted wherein 1001 or 65% were completed in accordance with their Certificate of Public Convenience (CPC).

Out of the 1001 operations completed under normal conditions, the reported movements were mostly in the Calabarzon Region at 22% followed by the Central Visayas Region at 19%.

Meanwhile, 25% of the passenger and cargo shipping operations were cancelled, all due to the community quarantine measures imposed by the different local government units governing the ships' ports of destination. Mostly affected were operations in the Central Visayas Region and Western Visayas Region.

Seventy-six (76) passenger and cargo ships or 5% encountered delays due to the additional measures adopted in view of COVID-19 such as temperature screening and inspections.

Lastly, thirty-three (33) passenger and forty-two (42) cargo shipping operations were not completed at the time of reporting, mostly as respective ships were still underway.

II. STATUS OF SHIPPING OPERATIONS BY CLASSIFICATION

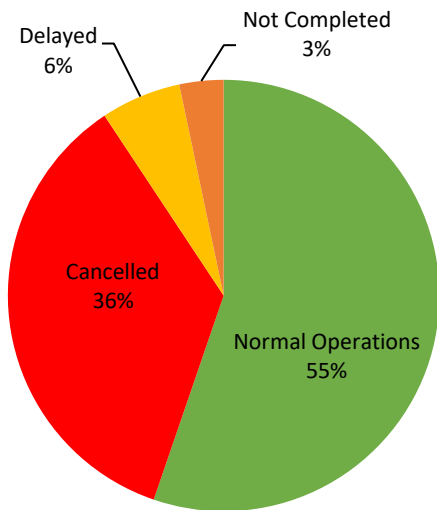
Region	Normal Operations		Cancelled		Delayed		Not Completed	
	Passenger	Cargo	Passenger	Cargo	Passenger	Cargo	Passenger	Cargo
NCR	16	64	9	1	6	6	0	3
I	0	0	0	0	0	0	0	0
II	2	0	0	0	0	0	1	0
III	0	62	1	0	0	0	0	0
IV-A	168	49	21	0	1	0	0	0
IV-B	148	23	41	0	7	4	3	0
V	37	13	0	0	1	0	6	0
VI	146	46	49	8	4	0	0	0
VII	17	103	126	14	39	5	19	38
VIII	3	12	46	0	0	1	0	0
IX	1	5	11	0	1	0	0	0
X	11	38	12	0	1	0	4	0
XI	0	22	0	0	0	0	0	0
XII	0	10	0	0	0	0	0	1
XIII	3	2	27	0	0	0	0	0
ARMM	0	0	11	0	0	0	0	0
Total	552	449	354	23	60	16	33	42

Amid the measures in place due to Code Red Sublevel 2 on COVID-19, 449 out of 530 (85%) cargo ships still operated normally – 9 bulk carriers, 7 chemical tankers, 86 are container ships, 49 general cargo ships, 93 LCT ships, 170 oil tankers, 25 RORO cargo ships, and 10 other types.

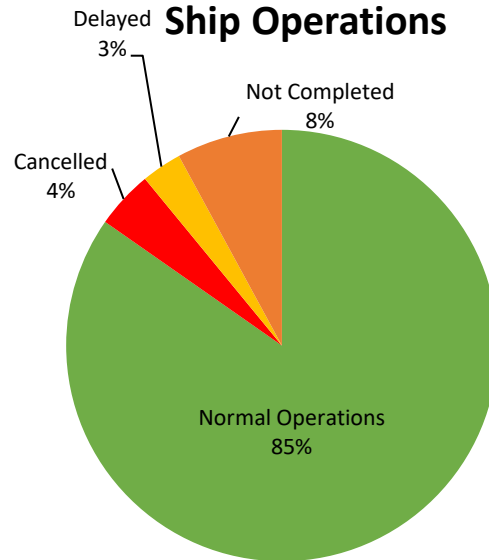
Five hundred fifty-two (552) passenger ships completed their operations - 467 conventional passenger ships, 83 RoPax ships, and 2 other types completed their operations but mostly only carried cargoes during their voyage.

Meanwhile out of the 999 passenger ships, 45% were affected by the measures adopted in view of COVID-19. These measures caused either the cancellation, delay or uncompleted operations of 447 passenger ships.

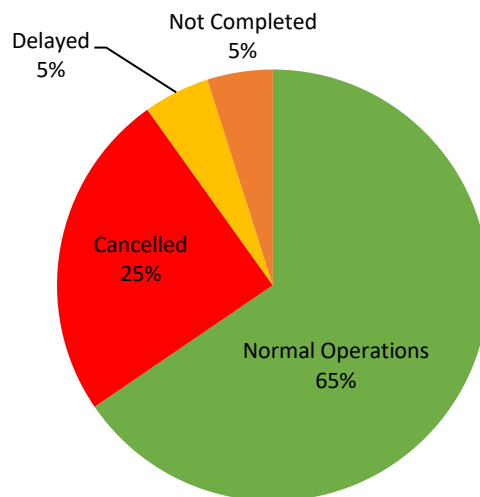
PASSENGER Ship Operations



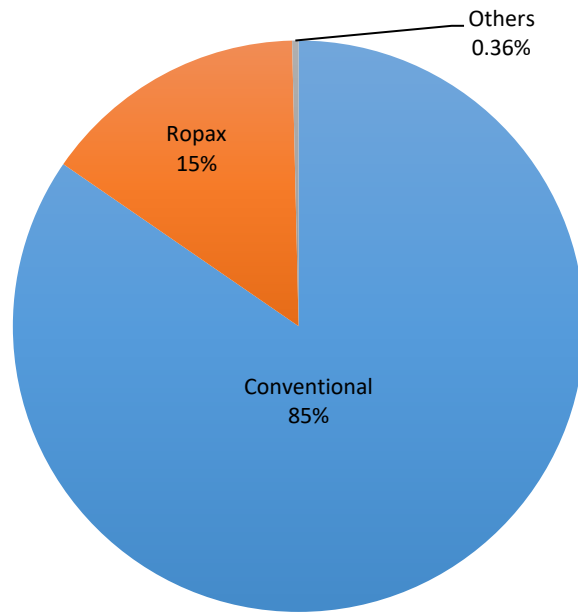
CARGO Ship Operations



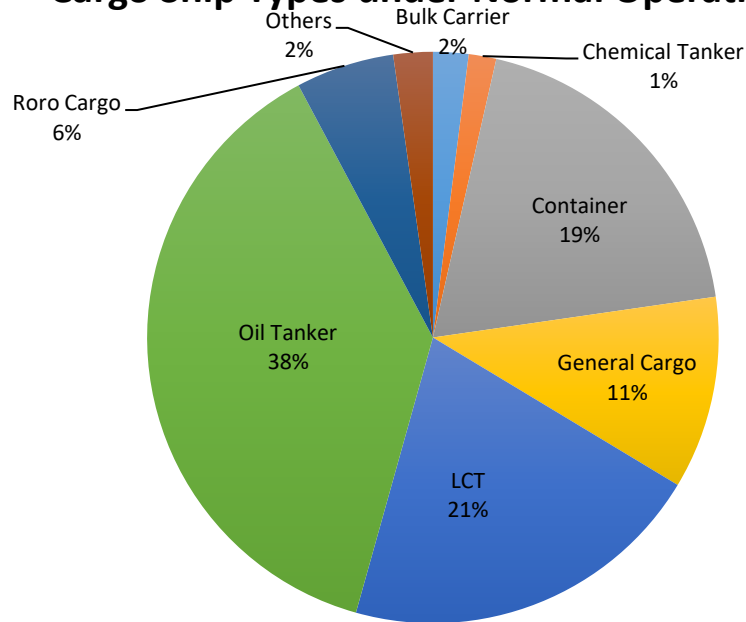
PASSENGER and CARGO Ship Operations



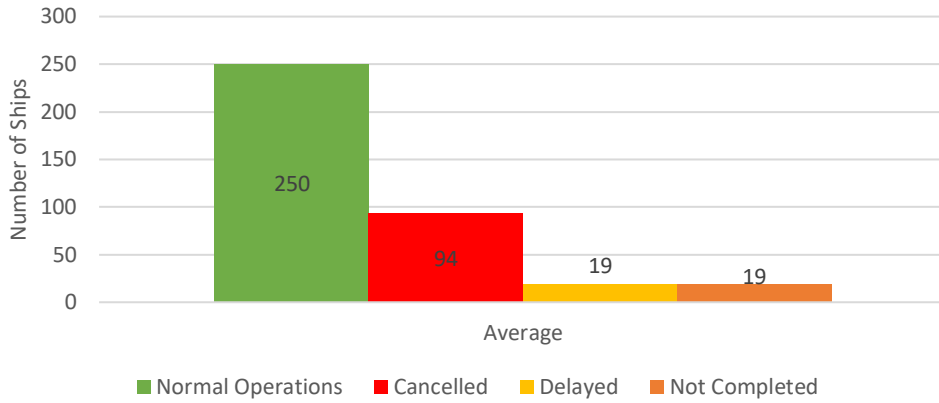
Passenger Ship Types under Normal Operations



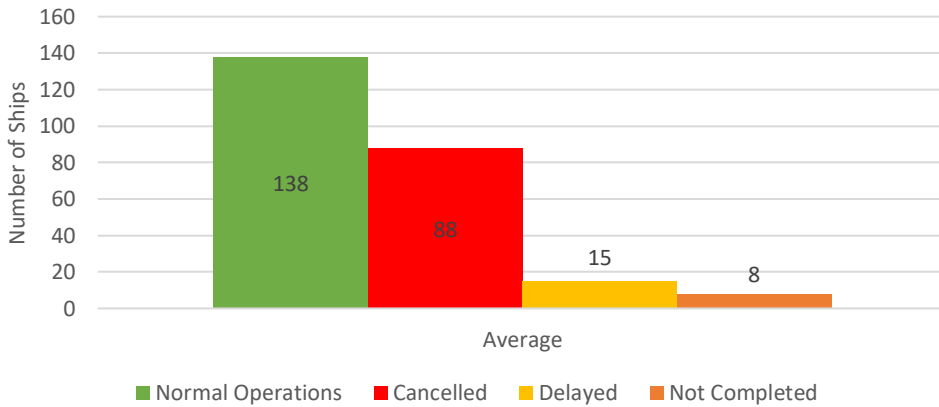
Cargo Ship Types under Normal Operations



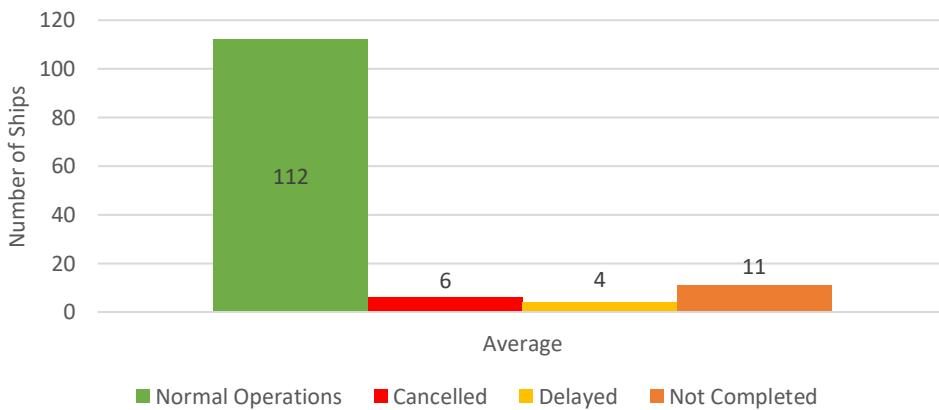
Daily Average Passenger and Cargo Ship Operation



Daily Average Passenger Ship Operation



Daily Average Cargo Ship Operation



III. WEEKLY STATUS OF SHIPPING OPERATIONS

