



MARITIME INDUSTRY AUTHORITY WEEKLY SUMMARY SITUATION REPORT – 07

Passenger and Cargo Shipping Operations from May 01 to 07, 2020
amid Code Red Sublevel 2 for the COVID-19
Data generated on May 07, 2020, 1:00 PM

HIGHLIGHTS

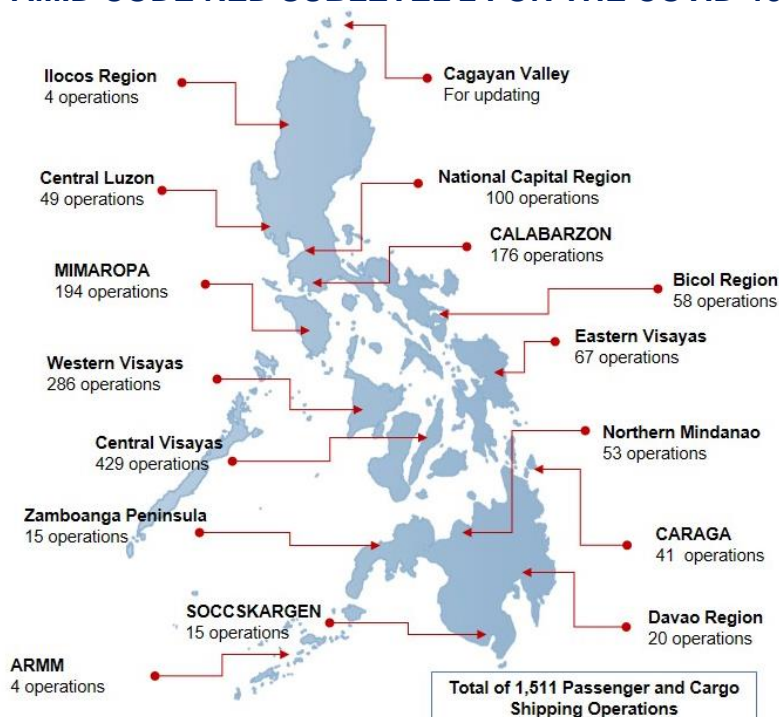
- Sixty percent (60%) of passenger and cargo shipping operations were completed in accordance with the ships' CPC.
- Forty percent (40%) of the shipping operations were affected due to the measures implemented in view Code Red Sublevel 2 for the COVID-19.
- Operations of passenger ships were more affected compared to cargo ships. 82% of the cargo shipping operations were completed under normal conditions compared to passenger ships at 49%.
- Daily average passenger and cargo ship operations are 226 completed under normal conditions, 120 cancelled trips, 21 delayed and 12 not completed voyages.
- **With cargo shipping still operational, transport of goods amid Enhanced Community Quarantine is assured.**

PASSENGER AND CARGO SHIPPING IN NUMBERS

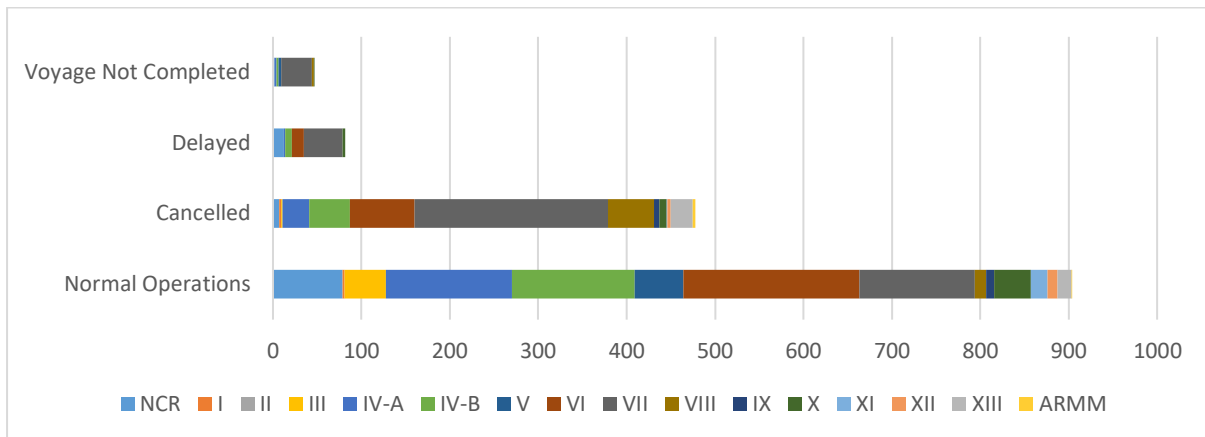
May 01 to May 07, 2020

- 1511** Shipping Operations Recorded
- 1019** Passenger Ships Operated
- 492** Cargo Ships Operated
- 904** Ships Operated Normally
- 478** Operations Cancelled
- 82** Operations Delayed
- 47** Operations Uncompleted

PASSENGER AND CARGO SHIPPING OPERATIONS IN THE PHILIPPINES AMID CODE RED SUBLEVEL 2 FOR THE COVID-19



I. STATUS OF SHIPPING OPERATIONS NATIONWIDE



From May 01 to May 07, 2020, there were 1,511 passenger and cargo shipping operations conducted wherein 904 or 60% were completed in accordance with their Certificate of Public Convenience (CPC).

Out of the 904 operations completed under normal conditions, the reported movements were mostly in the Western Visayas Region at 22% followed by the Calabarzon Region at 16%.

Meanwhile, 32% of the passenger and cargo shipping operations were cancelled, all due to the community quarantine measures imposed by the different local government units governing the ships' ports of destination. Mostly affected were operations in the Central Visayas Region and Western Visayas Region.

Eighty-two (82) passenger and cargo ships or 5% encountered delays due to the additional measures adopted in view of COVID-19 such as temperature screening and inspections.

Lastly, twenty-four (24) passenger and twenty-three (23) cargo shipping operations were not completed at the time of reporting, mostly as respective ships were still underway.

II. STATUS OF SHIPPING OPERATIONS BY CLASSIFICATION

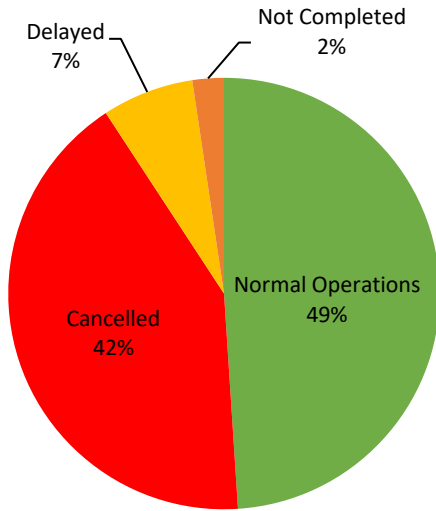
Region	Normal Operations		Cancelled		Delayed		Not Completed	
	Passenger	Cargo	Passenger	Cargo	Passenger	Cargo	Passenger	Cargo
NCR	14	65	7	0	4	8	0	2
I	0	2	1	1	0	0	0	0
II	0	0	0	0	0	0	0	0
III	0	47	0	2	0	0	0	0
IV-A	102	40	30	0	2	0	2	0
IV-B	114	25	46	0	7	0	2	0
V	41	14	0	0	0	0	3	0
VI	147	52	71	2	12	2	0	0
VII	54	77	173	46	44	0	15	20
VIII	1	12	51	1	0	0	1	1
IX	3	6	6	0	0	0	0	0
X	13	28	8	0	1	2	1	0
XI	1	18	1	0	0	0	0	0
XII	1	10	4	0	0	0	0	0
XIII	8	8	25	0	0	0	0	0
ARMM	0	1	3	0	0	0	0	0
Total	499	405	426	52	70	12	24	23

Amid the measures in place due to Code Red Sublevel 2 on COVID-19, 405 out of 492 (82%) cargo ships still operated normally – 5 bulk carriers, 7 chemical tankers, 91 are container ships, 51 general cargo ships, 76 LCT ships, 154 oil tankers, 17 RORO cargo ships, and 4 other types.

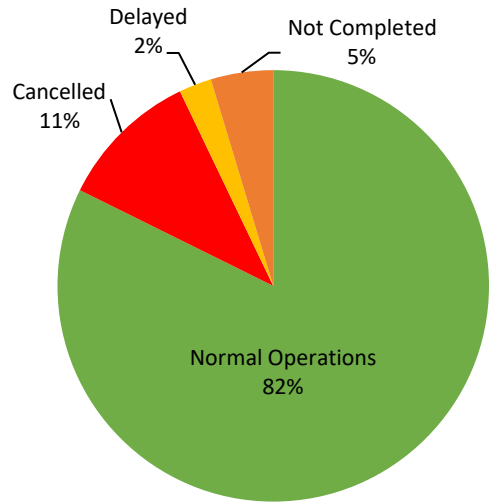
Four hundred ninety-nine (499) passenger ships completed their operations - 377 conventional passenger ships, 119 RoPax ships, and 3 fast craft ferries completed their operations but mostly only carried cargoes during their voyage.

Meanwhile out of the 1019 passenger ships, 51% were affected by the measures adopted in view of COVID-19. These measures caused either the cancellation, delay or uncompleted operations of 520 passenger ships.

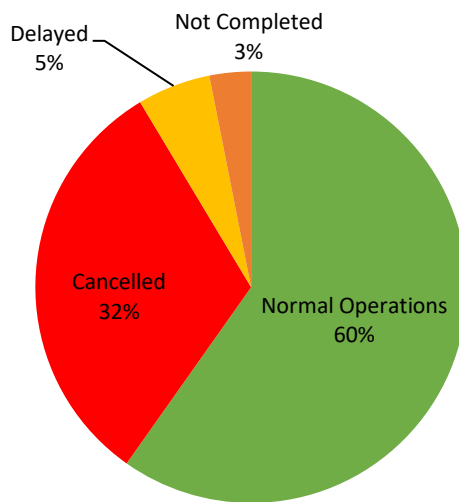
PASSENGER Ship Operations



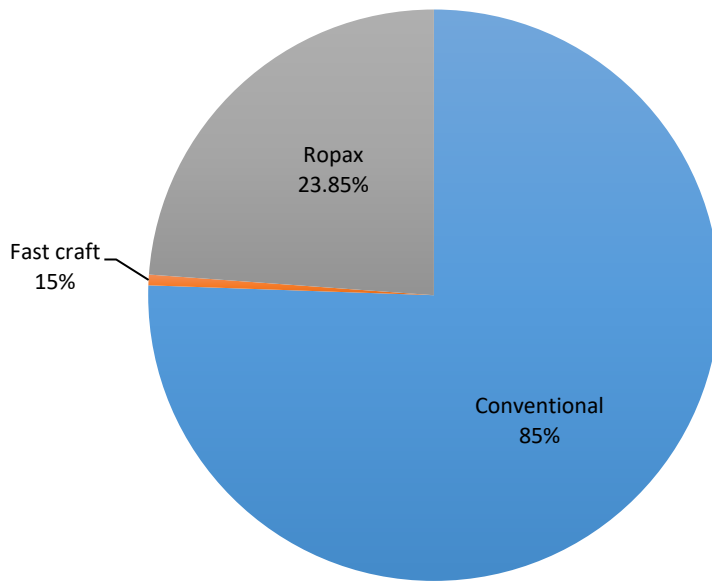
CARGO Ship Operations



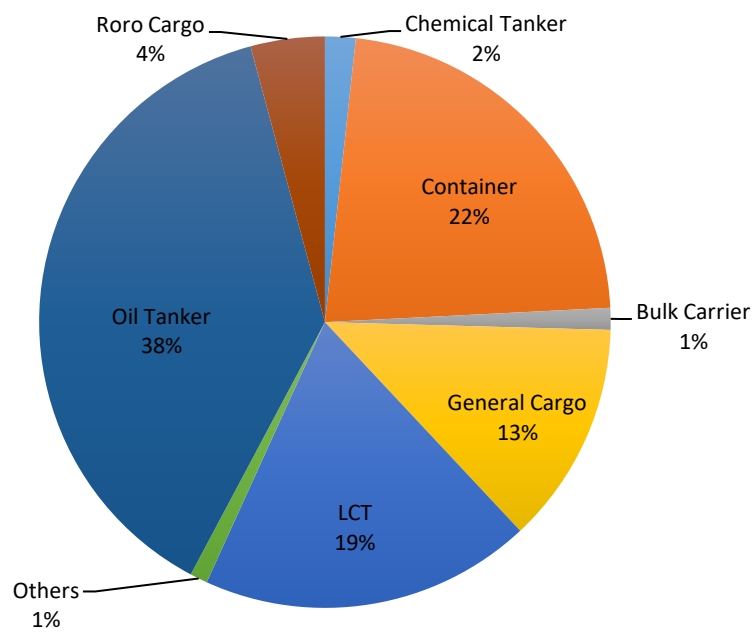
PASSENGER and CARGO Ship Operations



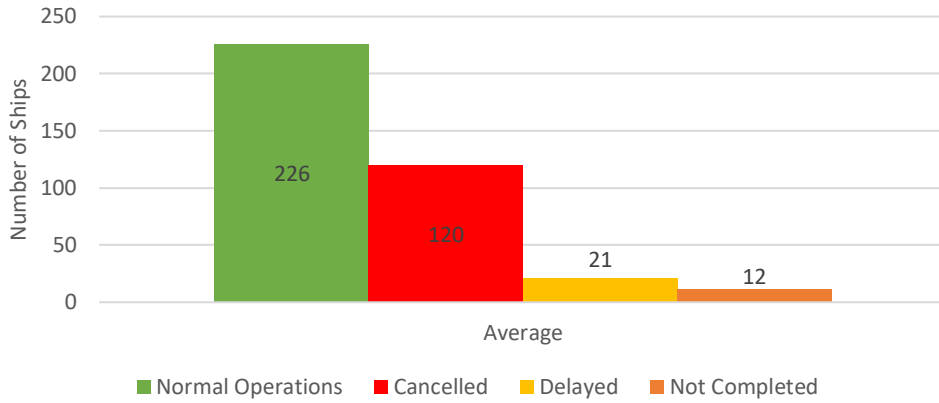
Passenger Ship Types under Normal Operations



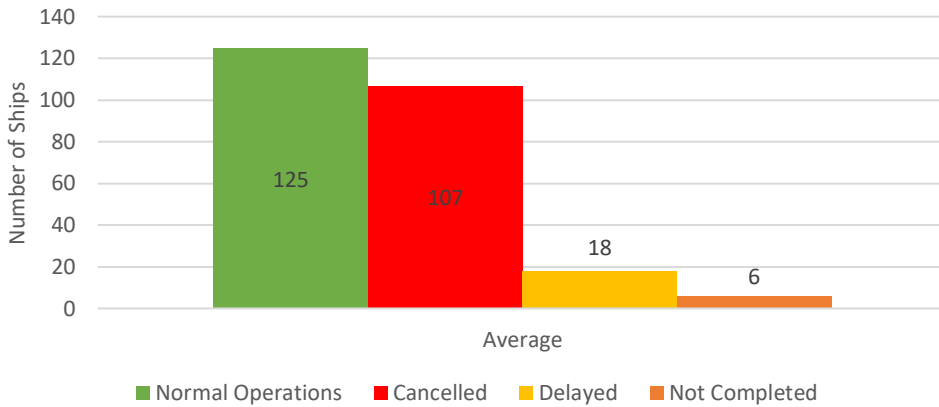
Cargo Ship Types under Normal Operations



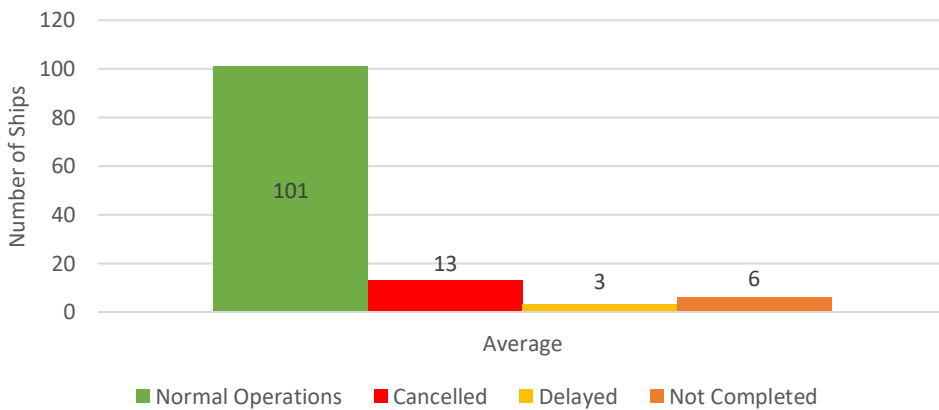
Daily Average Passenger and Cargo Ship Operation



Daily Average Passenger Ship Operation



Daily Average Cargo Ship Operation



III. WEEKLY STATUS OF SHIPPING OPERATIONS

