



## MARITIME INDUSTRY AUTHORITY WEEKLY SUMMARY SITUATION REPORT – 09

Passenger and Cargo Shipping Operations from May 15 to 21, 2020  
amid Code Red Sublevel 2 for the COVID-19  
*Data generated on May 21, 2020, 1:00 PM*

### HIGHLIGHTS

- Sixty-two percent (62%) of passenger and cargo shipping operations were completed in accordance with the ships' CPC.
- Thirty-eight percent (38%) of the shipping operations were affected due to the measures implemented in view Code Red Sublevel 2 for the COVID-19.
- Operations of passenger ships were more affected compared to cargo ships. 81% of the cargo shipping operations were completed under normal conditions compared to passenger ships at 52%.
- Daily average passenger and cargo ship operations are 200 completed under normal conditions, 80 cancelled trips, 30 delayed and 13 not completed voyages.
- **With cargo shipping still operational, transport of goods amid Enhanced Community Quarantine is assured.**

### PASSENGER AND CARGO SHIPPING IN NUMBERS

May 15 to May 21, 2020

**1289** Shipping Operations Recorded

**843** Passenger Ships Operated

**446** Cargo Ships Operated

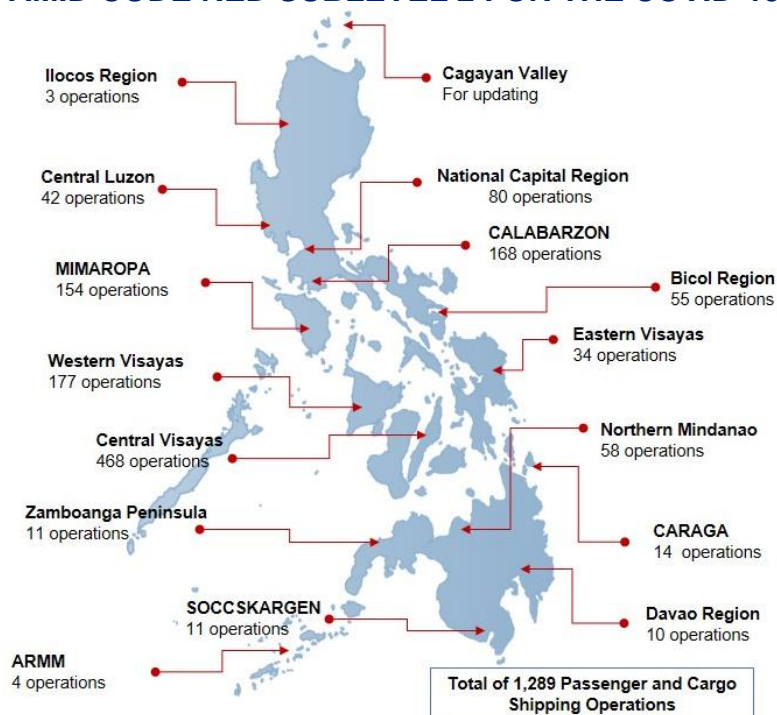
**798** Ships Operated Normally

**320** Operations Cancelled

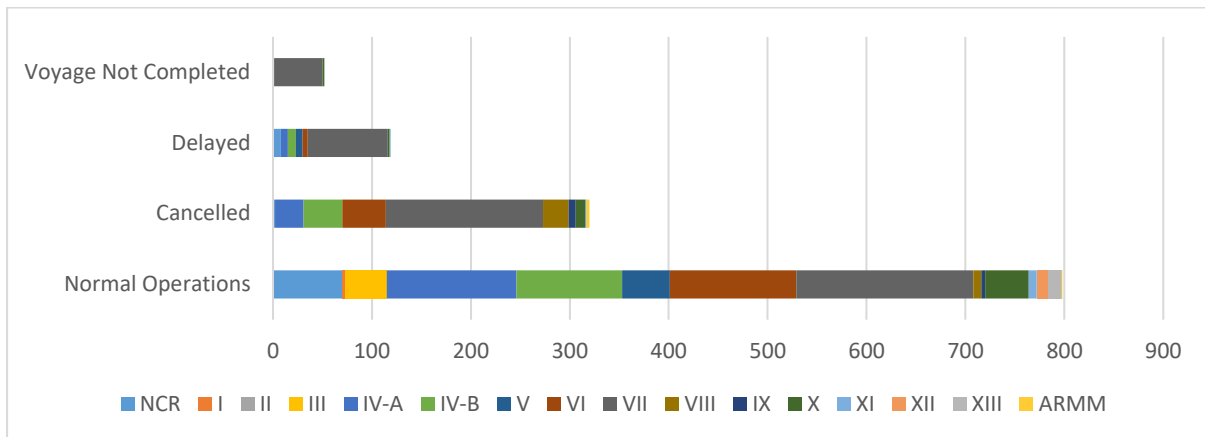
**119** Operations Delayed

**52** Operations Uncompleted

### PASSENGER AND CARGO SHIPPING OPERATIONS IN THE PHILIPPINES AMID CODE RED SUBLEVEL 2 FOR THE COVID-19



## I. STATUS OF SHIPPING OPERATIONS NATIONWIDE



From May 15 to May 21, 2020, there were 1,289 passenger and cargo shipping operations conducted wherein 798 or 62% were completed in accordance with their Certificate of Public Convenience (CPC).

Out of the 798 operations completed under normal conditions, the reported movements were mostly in the Central Visayas Region at 22% followed by the Calabarzon Region at 16%.

Meanwhile, 25% of the passenger and cargo shipping operations were cancelled, all due to the community quarantine measures imposed by the different local government units governing the ships' ports of destination. Mostly affected were operations in the Central Visayas Region and Mimaropa Region.

One hundred nineteen (119) passenger and cargo ships or 9% encountered delays due to the additional measures adopted in view of COVID-19 such as temperature screening and inspections.

Lastly, twenty-one (21) passenger and twenty-one (31) cargo shipping operations were not completed at the time of reporting, mostly as respective ships were still underway.

## II. STATUS OF SHIPPING OPERATIONS BY CLASSIFICATION

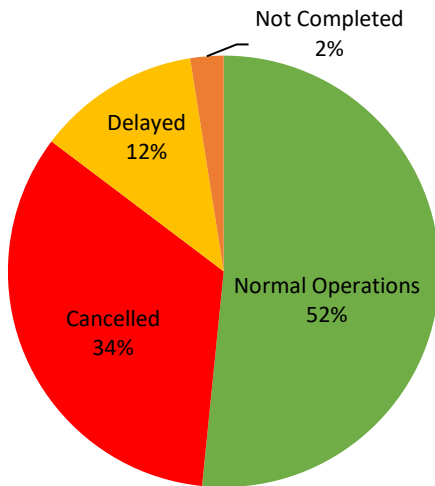
Region	Normal Operations		Cancelled		Delayed		Not Completed	
	Passenger	Cargo	Passenger	Cargo	Passenger	Cargo	Passenger	Cargo
<b>NCR</b>	14	56	2	0	1	7	0	0
<b>I</b>	0	3	0	0	0	0	0	0
<b>II</b>	0	0	0	0	0	0	0	0
<b>III</b>	0	42	0	0	0	0	0	0
<b>IV-A</b>	106	25	29	0	7	0	1	0
<b>IV-B</b>	98	9	39	0	8	0	0	0
<b>V</b>	41	7	0	0	7	0	0	0
<b>VI</b>	80	48	43	1	5	0	0	0
<b>VII</b>	71	108	124	35	75	6	19	30
<b>VIII</b>	1	7	26	0	0	0	0	0
<b>IX</b>	1	3	7	0	0	0	0	0
<b>X</b>	15	29	10	0	0	2	1	1
<b>XI</b>	1	7	1	0	0	1	0	0
<b>XII</b>	1	10	0	0	0	0	0	0
<b>XIII</b>	6	8	0	0	0	0	0	0
<b>ARMM</b>	0	1	3	0	0	0	0	0
<b>Total</b>	<b>435</b>	<b>363</b>	<b>284</b>	<b>36</b>	<b>103</b>	<b>16</b>	<b>21</b>	<b>31</b>

Amid the measures in place due to Code Red Sublevel 2 on COVID-19, 363 out of 446 (81%) cargo ships still operated normally – 4 are bulk carriers, 9 chemical tankers, 78 container ships, 27 general cargo ships, 88 LCT ships, 130 oil tankers, 24 RORO cargo ships, and 3 other types.

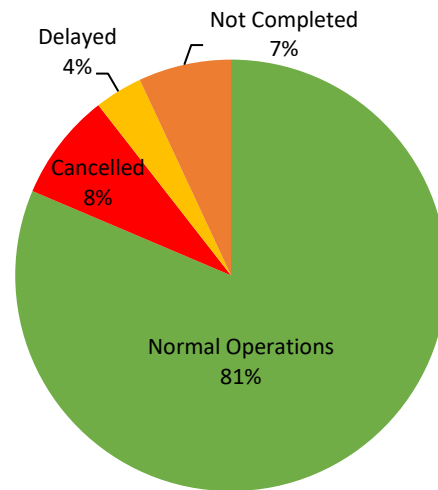
Four hundred thirty-five (435) passenger ships completed their operations - 317 conventional passenger ships, 113 RoPax ships, and 5 fast craft ferries completed their operations but mostly only carried cargoes during their voyage.

Meanwhile out of the 843 passenger ships, 48% were affected by the measures adopted in view of COVID-19. These measures caused either the cancellation, delay or uncompleted operations of 408 passenger ships.

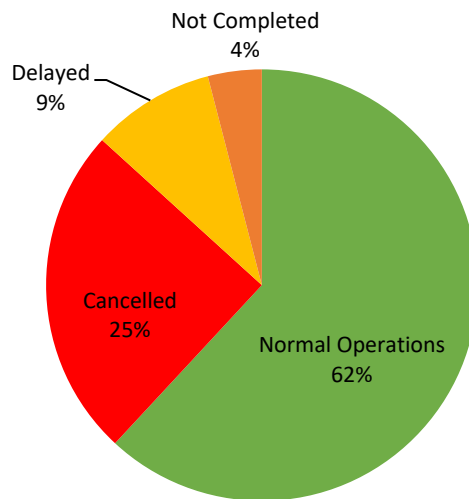
### PASSENGER Ship Operations



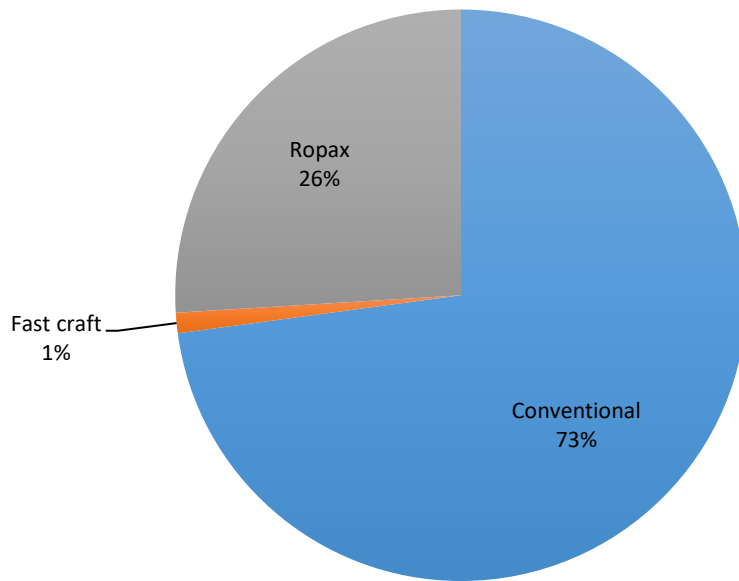
### CARGO Ship Operations



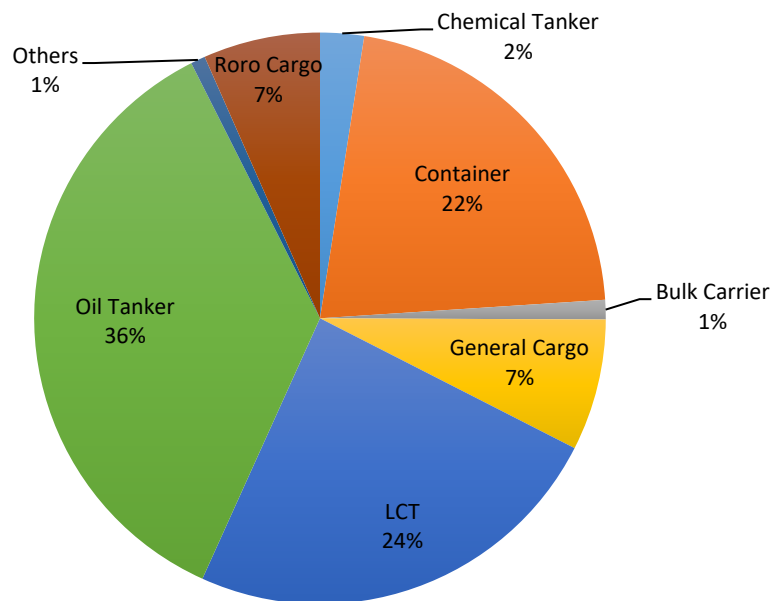
### PASSENGER and CARGO Ship Operations



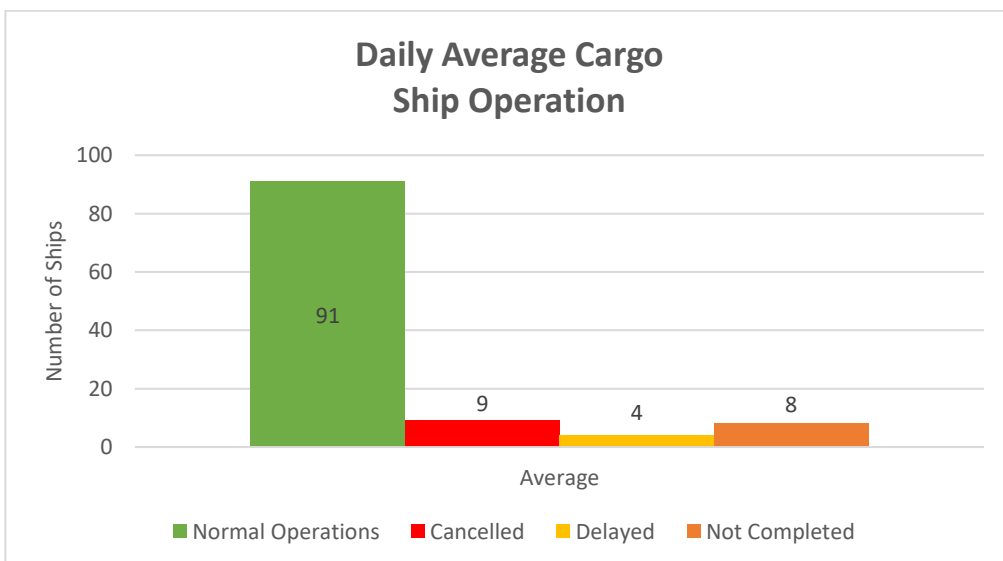
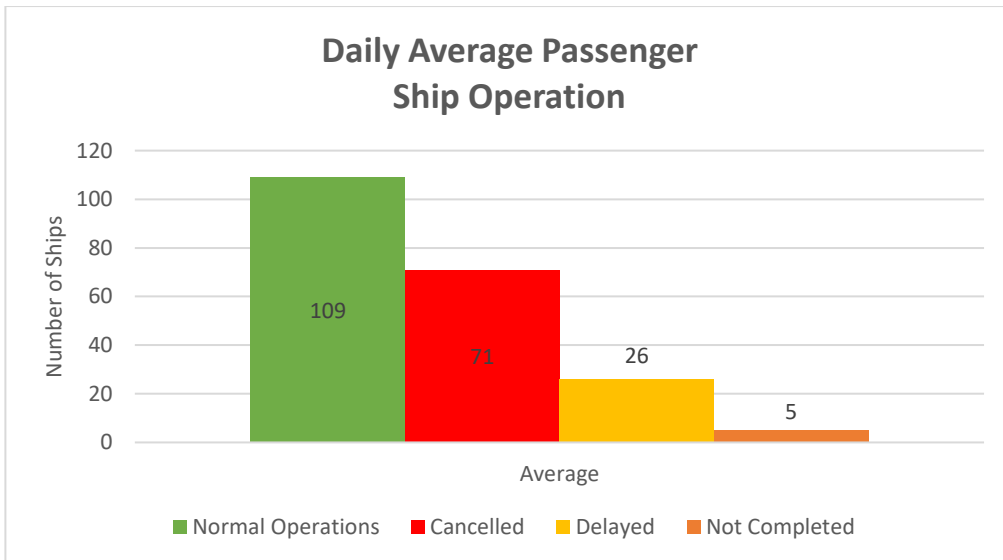
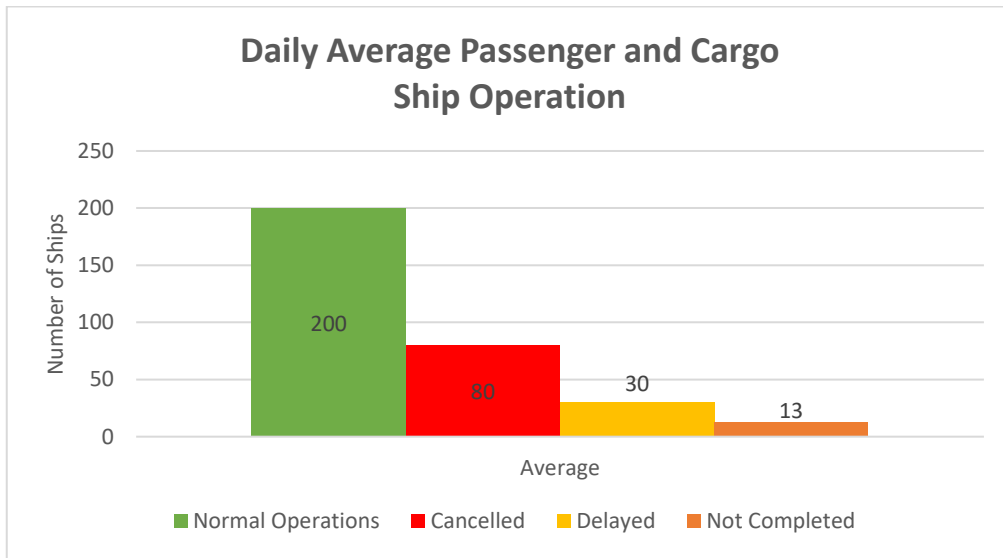
## Passenger Ship Types under Normal Operations



## Cargo Ship Types under Normal Operations



### III. DAILY AVERAGE PASSENGER AND CARGO SHIPPING OPERATION ( May 15 – 21, 2020)





# WEEKLY STATUS OF SHIPPING OPERATIONS

20 March to 21 May 2020

■ Total number of ships per week (passenger and cargo)      ■ Total number of passenger ships per week  
■ Total number of cargo ships per week

