



## MARITIME INDUSTRY AUTHORITY WEEKLY SUMMARY SITUATION REPORT – 08

Passenger and Cargo Shipping Operations from May 08 to 14, 2020  
amid Code Red Sublevel 2 for the COVID-19  
*Data generated on May 14, 2020, 1:00 PM*

### HIGHLIGHTS

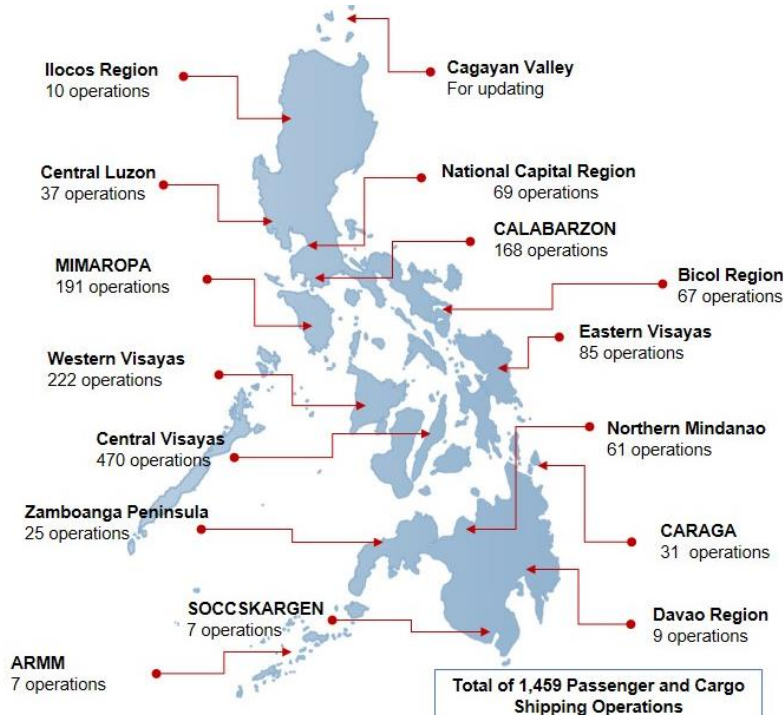
- Fifty-seven percent (57%) of passenger and cargo shipping operations were completed in accordance with the ships' CPC.
- Forty-three percent (43%) of the shipping operations were affected due to the measures implemented in view Code Red Sublevel 2 for the COVID-19.
- Operations of passenger ships were more affected compared to cargo ships. 80% of the cargo shipping operations were completed under normal conditions compared to passenger ships at 48%.
- Daily average passenger and cargo ship operations are 209 completed under normal conditions, 116 cancelled trips, 25 delayed and 15 not completed voyages.
- **With cargo shipping still operational, transport of goods amid Enhanced Community Quarantine is assured.**

### PASSENGER AND CARGO SHIPPING IN NUMBERS

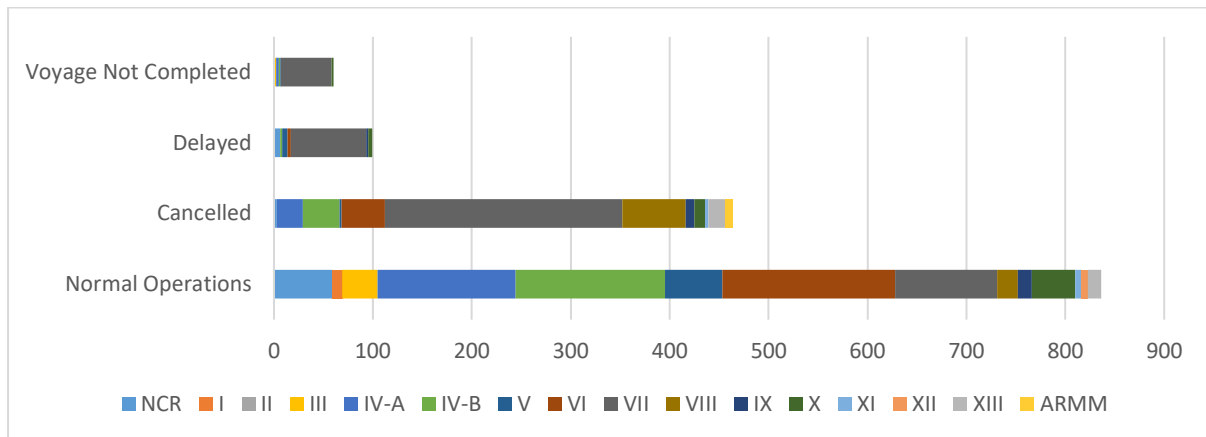
May 08 to May 14, 2020

- 1459** Shipping Operations Recorded
- 1024** Passenger Ships Operated
- 435** Cargo Ships Operated
- 836** Ships Operated Normally
- 464** Operations Cancelled
- 99** Operations Delayed
- 60** Operations Uncompleted

### PASSENGER AND CARGO SHIPPING OPERATIONS IN THE PHILIPPINES AMID CODE RED SUBLEVEL 2 FOR THE COVID-19



## I. STATUS OF SHIPPING OPERATIONS NATIONWIDE



From May 08 to May 14, 2020, there were 1,459 passenger and cargo shipping operations conducted wherein 836 or 57% were completed in accordance with their Certificate of Public Convenience (CPC).

Out of the 836 operations completed under normal conditions, the reported movements were mostly in the Western Visayas Region at 21% followed by the Mimaropa Region at 18%.

Meanwhile, 32% of the passenger and cargo shipping operations were cancelled, all due to the community quarantine measures imposed by the different local government units governing the ships' ports of destination. Mostly affected were operations in the Central Visayas Region and Eastern Visayas Region.

Ninety-nine (99) passenger and cargo ships or 7% encountered delays due to the additional measures adopted in view of COVID-19 such as temperature screening and inspections.

Lastly, twenty-eight (28) passenger and twenty-two (22) cargo shipping operations were not completed at the time of reporting, mostly as respective ships were still underway.

## II. STATUS OF SHIPPING OPERATIONS BY CLASSIFICATION

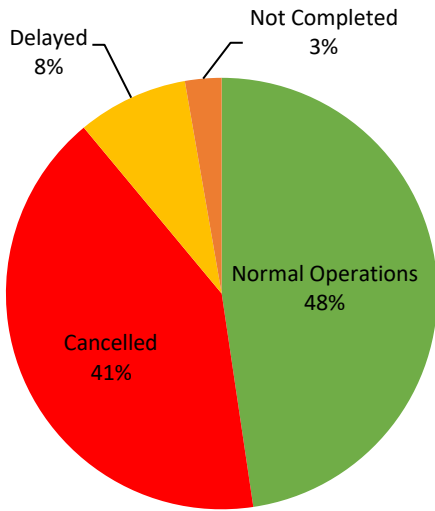
Region	Normal Operations		Cancelled		Delayed		Not Completed	
	Passenger	Cargo	Passenger	Cargo	Passenger	Cargo	Passenger	Cargo
<b>NCR</b>	11	48	3	0	2	4	0	1
<b>I</b>	0	10	0	0	0	0	0	0
<b>II</b>	0	0	0	0	0	0	0	0
<b>III</b>	0	36	0	0	0	0	0	1
<b>IV-A</b>	113	26	26	0	0	0	3	0
<b>IV-B</b>	139	12	37	0	2	0	1	0
<b>V</b>	48	10	2	0	6	0	1	0
<b>VI</b>	127	48	42	2	3	0	0	0
<b>VII</b>	23	80	201	39	67	9	21	30
<b>VIII</b>	3	18	64	0	0	0	0	0
<b>IX</b>	3	11	9	0	2	0	0	0
<b>X</b>	12	32	11	0	3	1	2	0
<b>XI</b>	0	6	3	0	0	0	0	0
<b>XII</b>	0	7	0	0	0	0	0	0
<b>XIII</b>	9	4	18	0	0	0	0	0
<b>ARMM</b>	0	0	7	0	0	0	0	0
<b>Total</b>	<b>488</b>	<b>348</b>	<b>423</b>	<b>41</b>	<b>85</b>	<b>14</b>	<b>28</b>	<b>32</b>

Amid the measures in place due to Code Red Sublevel 2 on COVID-19, 348 out of 435 (80%) cargo ships still operated normally – 7 are bulk carriers, 4 chemical tankers, 79 container ships, 27 general cargo ships, 79 LCT ships, 136 oil tankers, 9 RORO cargo ships, and 7 other types.

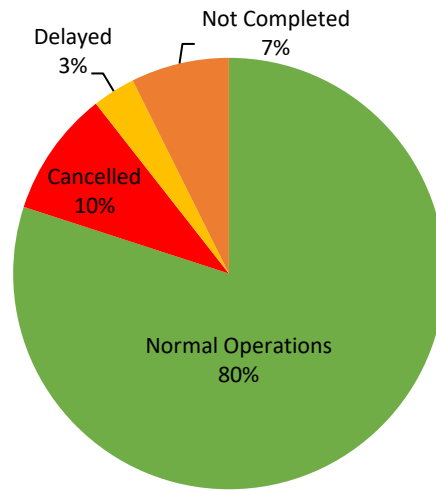
Four hundred eighty-eight (488) passenger ships completed their operations - 410 conventional passenger ships, 77 RoPax ships, and 1 fast craft ferry completed their operations but mostly only carried cargoes during their voyage.

Meanwhile out of the 1024 passenger ships, 52% were affected by the measures adopted in view of COVID-19. These measures caused either the cancellation, delay or uncompleted operations of 536 passenger ships.

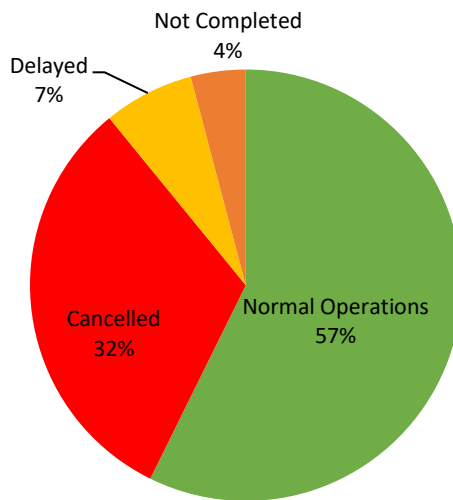
### PASSENGER Ship Operations



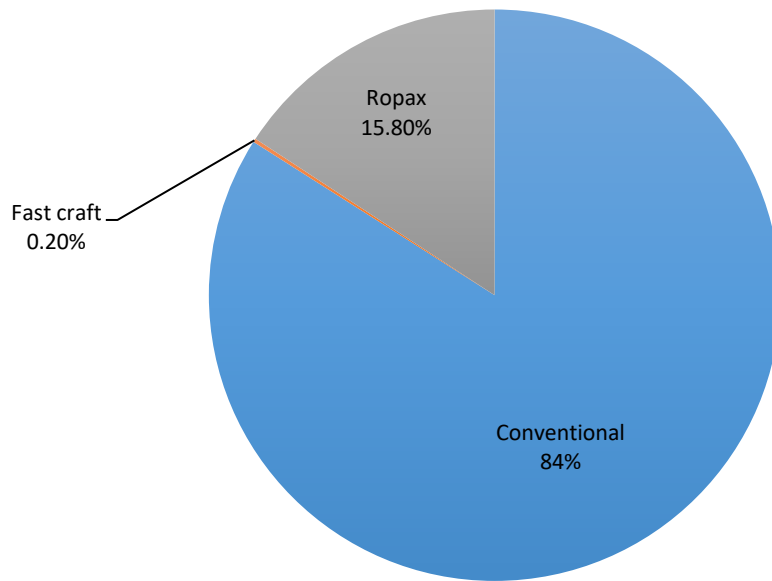
### CARGO Ship Operations



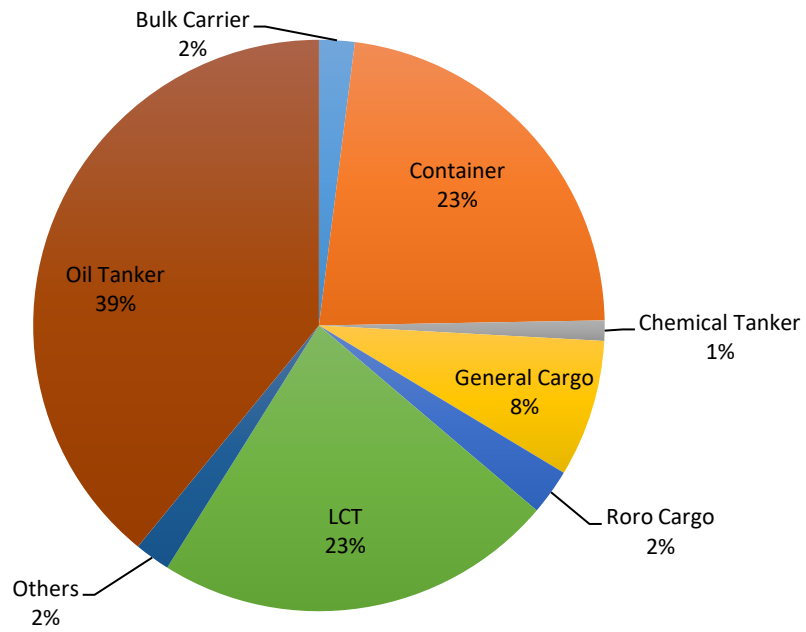
### PASSENGER and CARGO Ship Operations



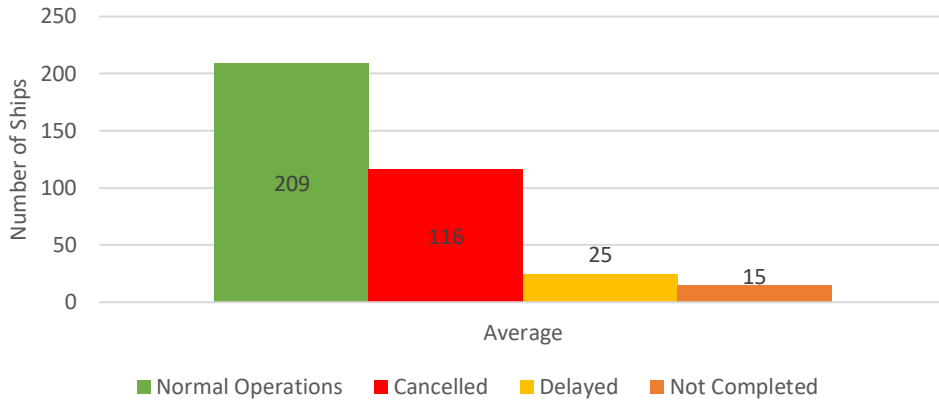
## Passenger Ship Types under Normal Operations



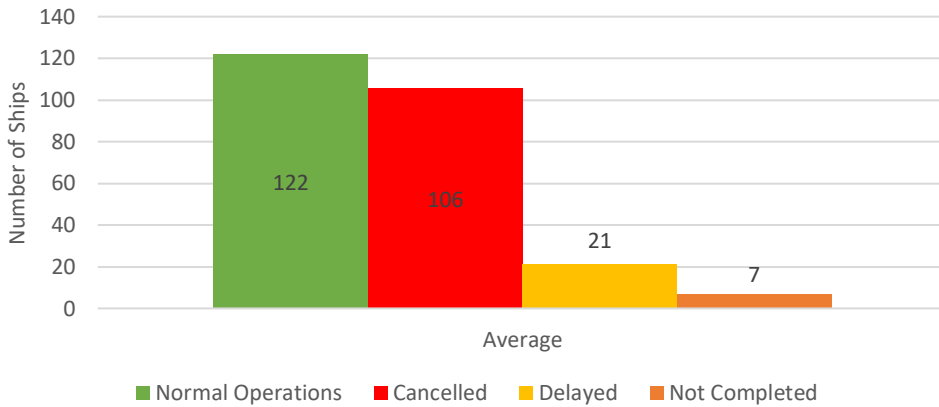
## Cargo Ship Types under Normal Operations



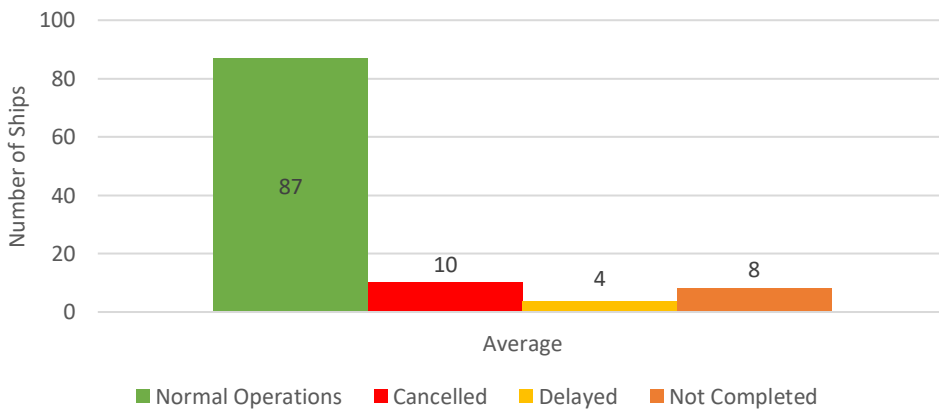
### Daily Average Passenger and Cargo Ship Operation



### Daily Average Passenger Ship Operation



### Daily Average Cargo Ship Operation





# WEEKLY STATUS OF SHIPPING OPERATIONS

20 March to 14 May 2020

**Total number of ships per week (passenger and cargo)**

**Total number of passenger ships per week**

**Total number of cargo ships per week**

