



## MARITIME INDUSTRY AUTHORITY WEEKLY SUMMARY SITUATION REPORT – 10

Passenger and Cargo Shipping Operations on May 22 to 28, 2020  
in areas under MECQ, MGCQ, and GCQ  
*Data generated on May 28, 2020, 1:00 PM*

### HIGHLIGHTS

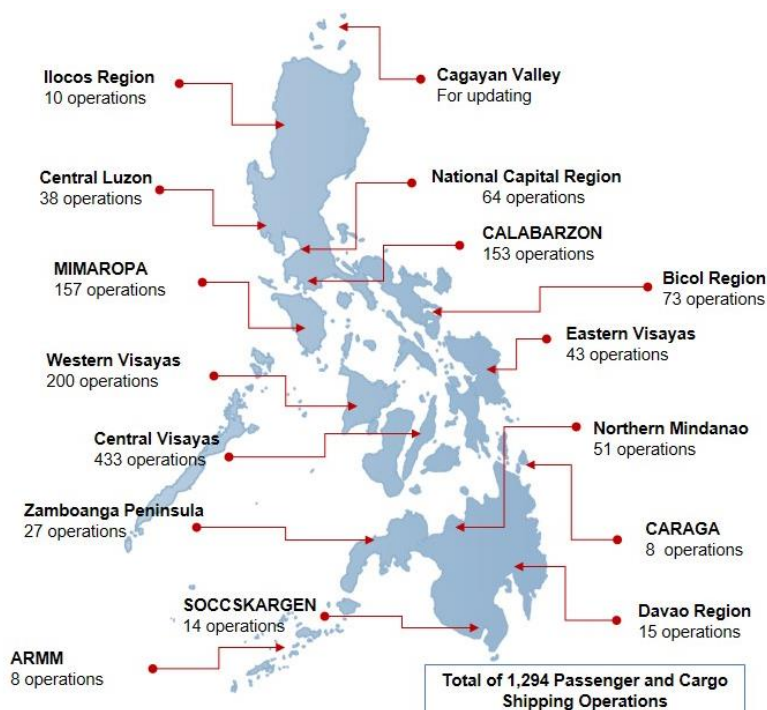
- Sixty percent (60%) of passenger and cargo shipping operations were completed in accordance with the ships' CPC.
- Forty percent (40%) of the shipping operations were affected due to the measures implemented in view Code Red Sublevel 2 for the COVID-19.
- Operations of passenger ships were more affected compared to cargo ships. 84% of the cargo shipping operations were completed under normal conditions compared to passenger ships at 49%.
- Daily average passenger and cargo ship operations are 195 completed under normal conditions, 90 cancelled trips, 29 delayed and 10 not completed voyages.
- **With cargo shipping still operational, transport of goods amid MECQ, MGCQ, and GCQ is assured.**

### PASSENGER AND CARGO SHIPPING IN NUMBERS

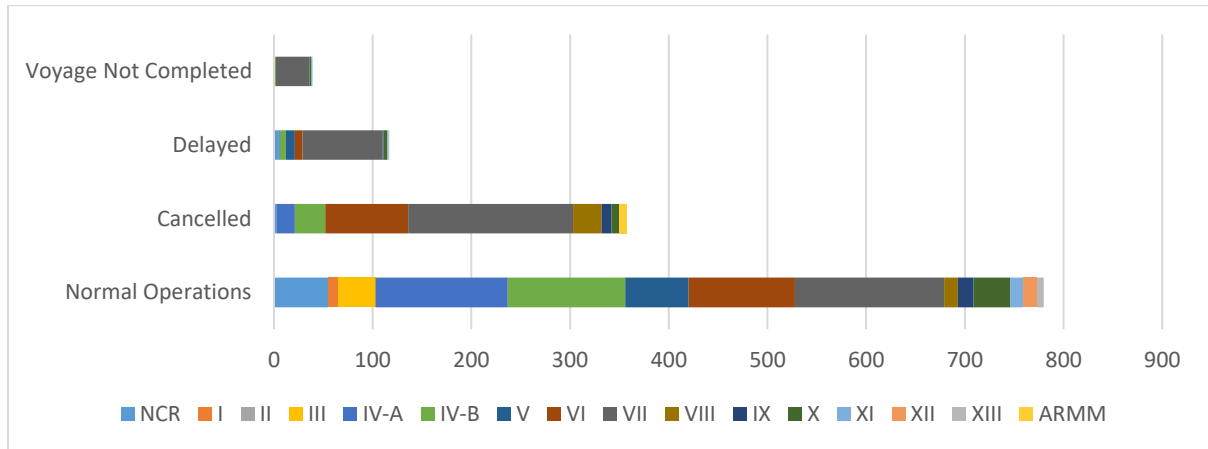
May 22 to 28, 2020

- 1294** Shipping Operations Recorded
- 870** Passenger Ships Operated
- 424** Cargo Ships Operated
- 780** Ships Operated Normally
- 358** Operations Cancelled
- 117** Operations Delayed
- 39** Operations Uncompleted

### PASSENGER AND CARGO SHIPPING OPERATIONS IN THE PHILIPPINES IN AREAS UNDER MECQ, MGCQ and GCQ



## I. STATUS OF SHIPPING OPERATIONS NATIONWIDE



On May 22 to 28, 2020, there were 1,294 passenger and cargo shipping operations conducted wherein 780 or 60% were completed in accordance with their Certificate of Public Convenience (CPC).

Out of the 780 operations completed under normal conditions, the reported movements were mostly in the Central Visayas Region at 19% and Calabarzon Regions at 17%.

Meanwhile, 28% of the passenger and cargo shipping operations were cancelled, all due to the community quarantine measures imposed by the different local government units governing the ships' ports of destination. Mostly affected were operations in the Central Visayas and Western Visayas Regions.

One-hundred four (104) passenger ships or 12% encountered delays due to the additional measures adopted in view of COVID-19 such as temperature screening and inspections.

Lastly, fifteen (15) passenger and twenty-four (24) cargo shipping operations were not completed at the time of reporting, as the respective ships were still underway.

## II. STATUS OF SHIPPING OPERATIONS BY CLASSIFICATION

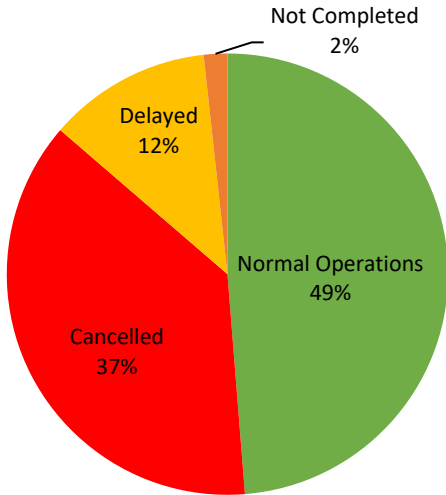
Region	Normal Operations		Cancelled		Delayed		Not Completed	
	Passenger	Cargo	Passenger	Cargo	Passenger	Cargo	Passenger	Cargo
<b>NCR</b>	17	38	3	0	2	3	0	1
<b>I</b>	0	10	0	0	0	0	0	0
<b>II</b>	0	0	0	0	0	0	0	0
<b>III</b>	0	38	0	0	0	0	0	0
<b>IV-A</b>	109	25	18	0	1	0	0	0
<b>IV-B</b>	106	13	31	0	6	0	1	0
<b>V</b>	56	8	0	0	9	0	0	0
<b>VI</b>	57	51	76	8	8	0	0	0
<b>VII</b>	51	100	144	23	75	6	13	21
<b>VIII</b>	2	12	29	0	0	0	0	0
<b>IX</b>	6	10	10	0	1	0	0	0
<b>X</b>	16	21	8	0	1	3	1	1
<b>XI</b>	0	13	0	0	0	1	0	1
<b>XII</b>	0	14	0	0	0	0	0	0
<b>XIII</b>	4	3	0	0	1	0	0	0
<b>ARMM</b>	0	0	8	0	0	0	0	0
<b>Total</b>	<b>424</b>	<b>356</b>	<b>327</b>	<b>31</b>	<b>104</b>	<b>13</b>	<b>15</b>	<b>24</b>

Amid the measures in place due to MECQ, MGCQ, and GCQ, 356 out of 424 (84%) cargo ships still operated normally – are 2 bulk carriers, 6 chemical tankers, 77 container ships, 19 general cargo ships, 97 LCT ships, 127 oil tankers, 24 Roro cargo ships, and 4 other types.

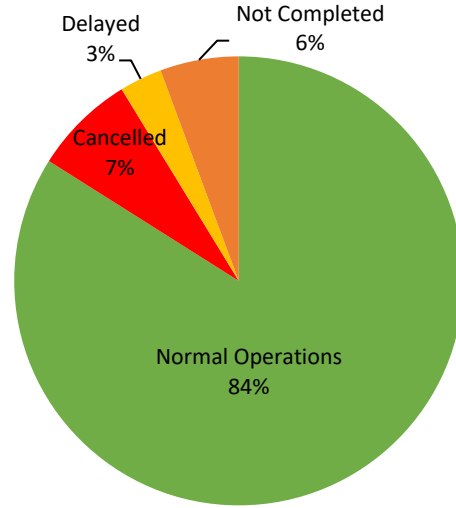
Four-hundred twenty-four (424) passenger ships completed their voyage – 285 conventional passenger ships, 134 RoPax ships and 5 fast craft ferries completed their operations but mostly only carried cargoes during their voyage.

Meanwhile out of the 870 passenger ships, 51% were affected by the measures adopted in view of COVID-19. These measures caused either the cancellation, delay, or uncompleted operations of 446 passenger ships.

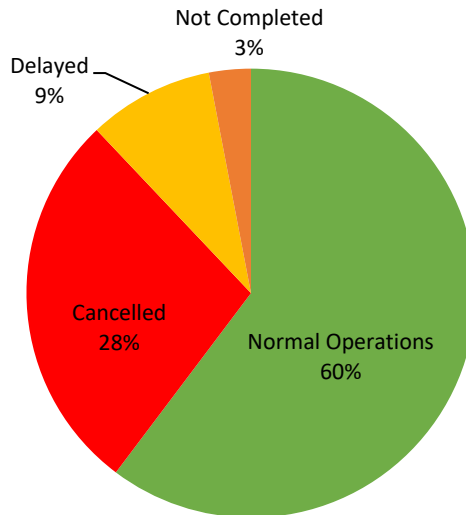
### PASSENGER Ship Operations



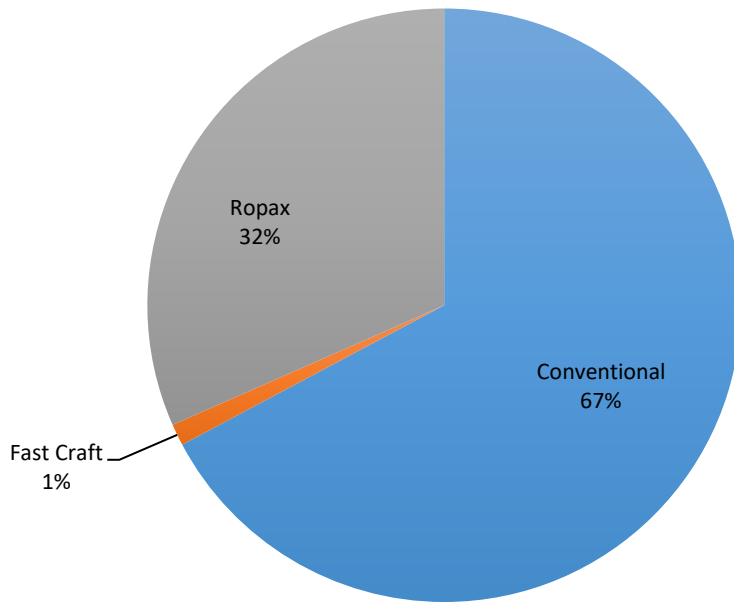
### CARGO Ship Operations



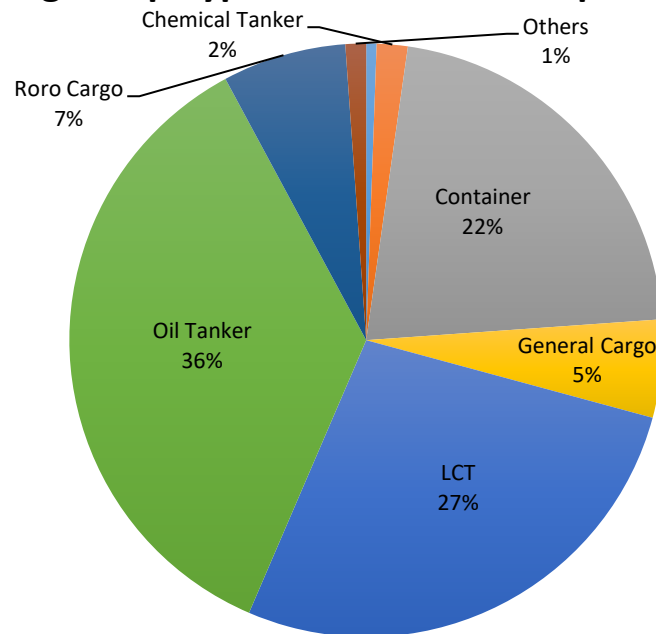
### PASSENGER and CARGO Ship Operations

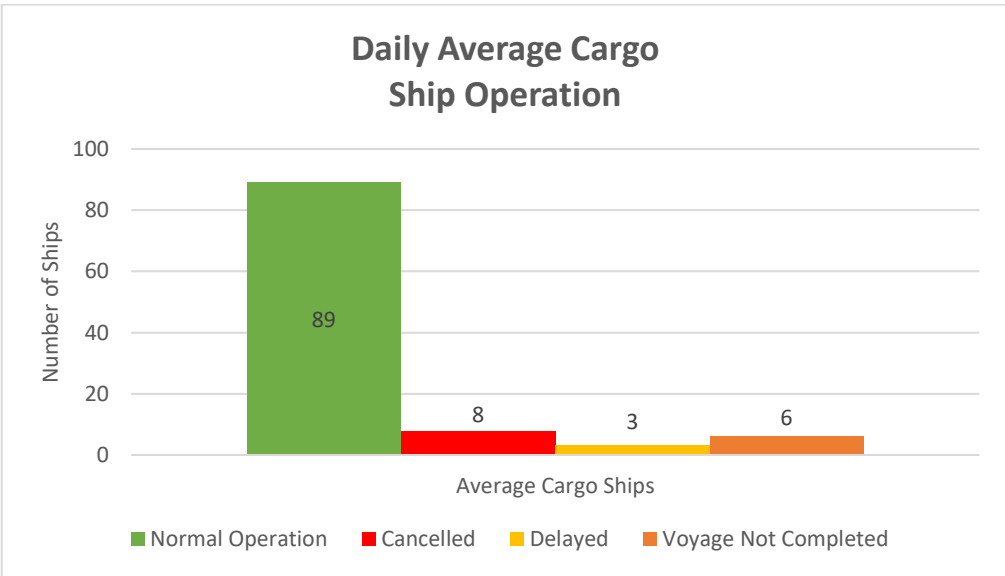
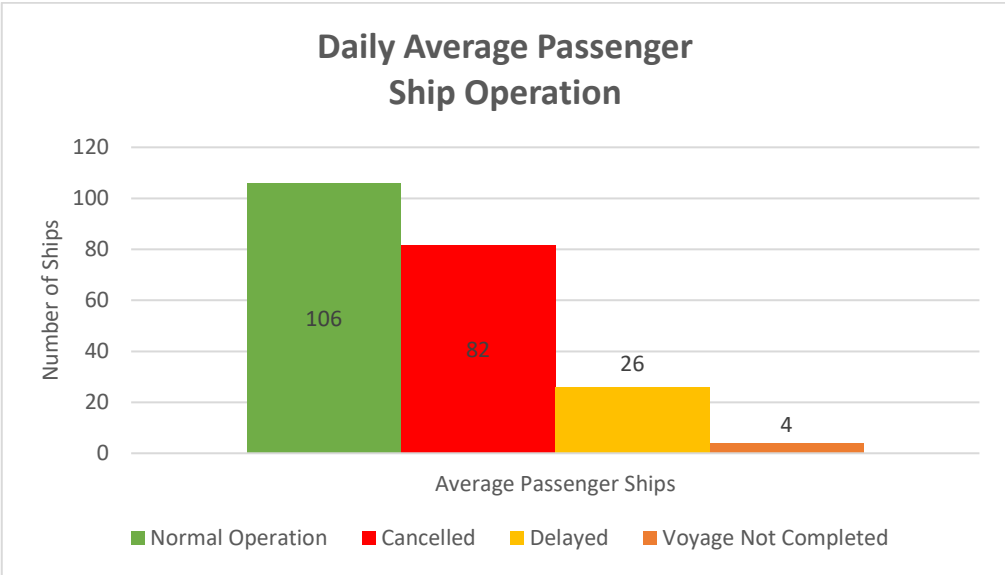
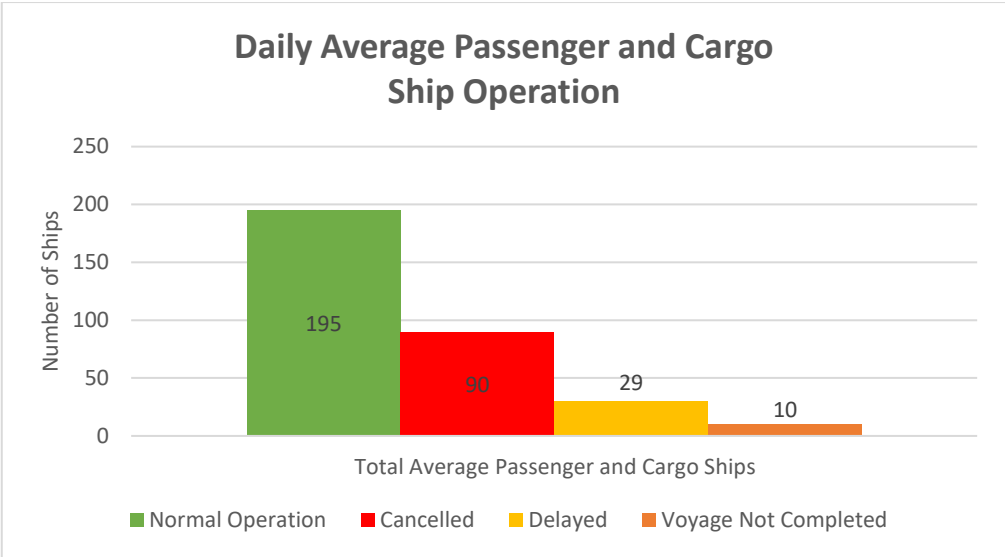


### Passenger Ship Types under Normal Operations



### Cargo Ship Types under Normal Operations







# WEEKLY STATUS OF SHIPPING OPERATIONS

20 March to 28 May 2020

■ Total number of ships per week (passenger and cargo)

■ Total number of passenger ships per week

■ Total number of cargo ships per week

