



MARITIME INDUSTRY AUTHORITY WEEKLY SUMMARY SITUATION REPORT – 13

Passenger and Cargo Shipping Operations on June 12 to 18, 2020
in areas under MECQ, MGCQ, and GCQ

Data generated on June 12 to 18, 2020, 3:00 PM

HIGHLIGHTS

- Seventy-five percent (75%) of passenger and cargo shipping operations were completed in accordance with the ships' CPC.
- Twenty-five percent (25%) of the shipping operations were affected due to the measures implemented in view Code Red Sublevel 2 for the COVID-19.
- Operations of passenger ships were more affected compared to cargo ships. 89% of the cargo shipping operations were completed under normal conditions compared to passenger ships at 70%.
- Daily average passenger and cargo ship operations are 217 completed under normal conditions, 45 cancelled trips, 25 delayed and 3 not completed voyages.

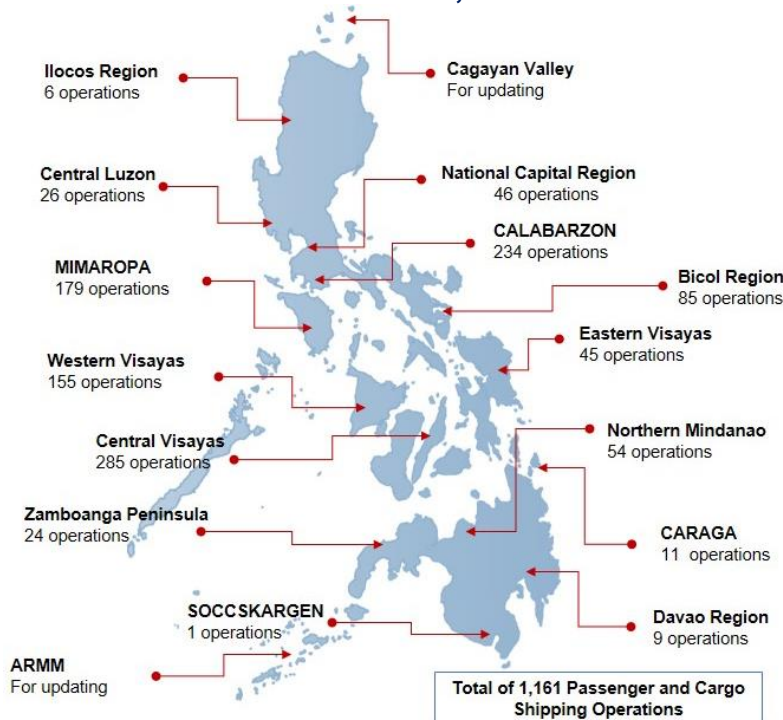
PASSENGER AND CARGO SHIPPING IN NUMBERS

June 12 to 18, 2020

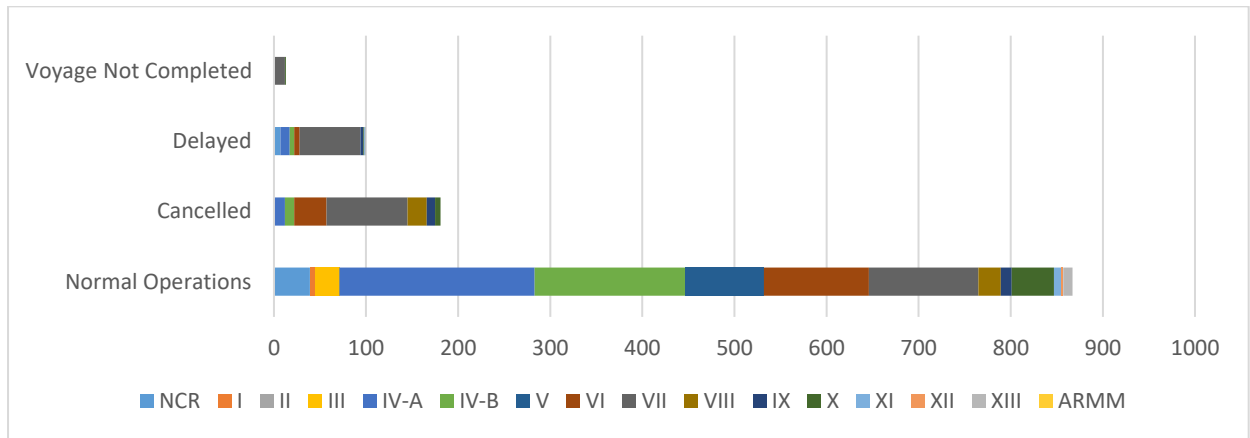
- 1161** Shipping Operations Recorded
- 864** Passenger Ships Operated
- 297** Cargo Ships Operated
- 867** Ships Operated Normally
- 181** Operations Cancelled
- 100** Operations Delayed
- 13** Operations Uncompleted

- With cargo shipping still operational, transport of goods amid MECQ, MGCQ, and GCQ is assured.**

PASSENGER AND CARGO SHIPPING OPERATIONS IN THE PHILIPPINES IN AREAS UNDER MECQ, MGCQ and GCQ



I. STATUS OF SHIPPING OPERATIONS NATIONWIDE



On June 12 to 18, 2020, there were 1,161 passenger and cargo shipping operations conducted wherein 867 or 75% were completed in accordance with their Certificate of Public Convenience (CPC).

Out of the 867 operations completed under normal conditions, the reported movements were mostly in the Calabarzon Region at 24% and Mimaropa Region at 19%.

Meanwhile, 16% of the passenger and cargo shipping operations were cancelled, all due to the community quarantine measures imposed by the different local government units governing the ships' ports of destination. Mostly affected were operations in the Central Visayas and Western Visayas Regions.

Eighty-five (85) passenger ships or 10% encountered delays due to the additional measures adopted in view of COVID-19 such as temperature screening and inspections.

Lastly, seven (7) passenger and six (6) cargo shipping operations were not completed at the time of reporting, as the respective ships were still underway.

II. STATUS OF SHIPPING OPERATIONS BY CLASSIFICATION

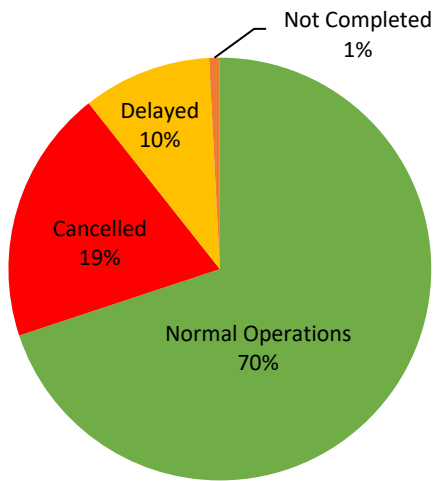
Region	Normal Operations		Cancelled		Delayed		Not Completed	
	Passenger	Cargo	Passenger	Cargo	Passenger	Cargo	Passenger	Cargo
NCR	12	27	0	0	5	2	0	0
I	0	6	0	0	0	0	0	0
II	0	0	0	0	0	0	0	0
III	0	26	0	0	0	0	0	0
IV-A	201	11	12	0	10	0	0	0
IV-B	151	13	10	0	4	1	0	0
V	77	8	0	0	0	0	0	0
VI	81	33	28	7	5	1	0	0
VII	31	88	82	6	56	10	6	6
VIII	2	22	21	0	0	0	0	0
IX	8	4	9	0	3	0	0	0
X	32	14	6	0	1	0	1	0
XI	1	7	0	0	0	1	0	0
XII	0	2	0	0	0	0	0	0
XIII	8	2	0	0	1	0	0	0
ARMM	0	0	0	0	0	0	0	0
Total	604	263	168	13	85	15	7	6

Amid the measures in place due to MECQ, MGCQ, and GCQ, 263 out of 297 (89%) cargo ships still operated normally – are 45 container ships, 12 general cargo ships, 90 LCT ships, 95 oil tankers and 21 Roro cargo ships.

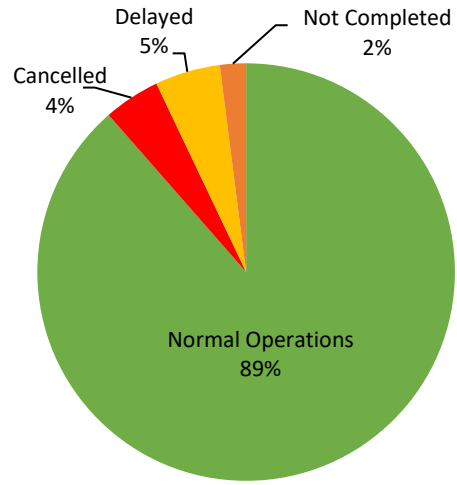
Six hundred and four (604) passenger ships completed their voyage – 470 conventional passenger ships, 128 RoPax ships and 2 fast craft ferries completed their operations but mostly only carried cargoes during their voyage.

Meanwhile out of the 864 passenger ships, 30% were affected by the measures adopted in view of COVID-19. These measures caused either the cancellation, delay, or uncompleted operations of 260 passenger ships.

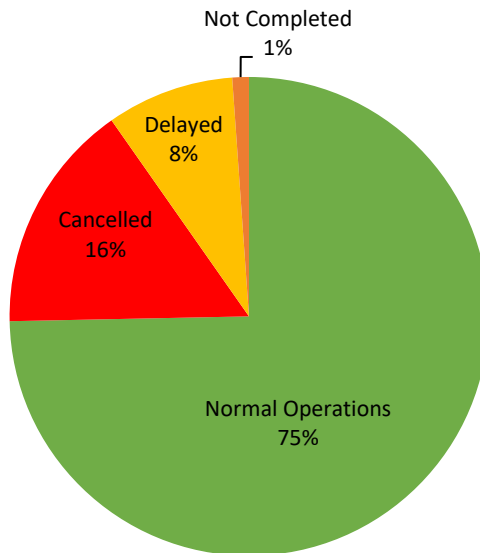
PASSENGER Ship Operations



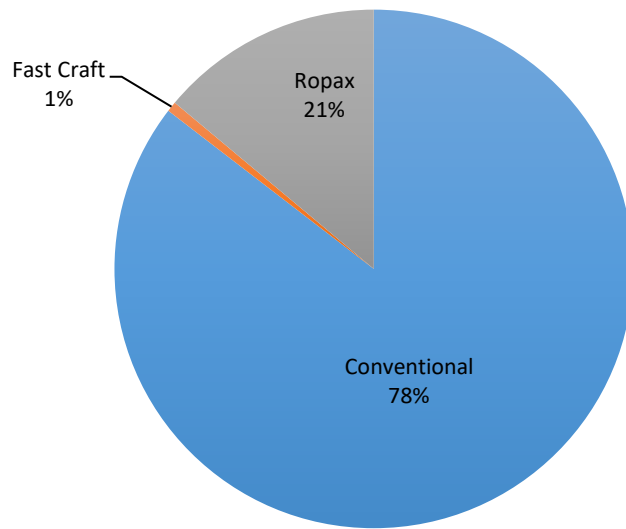
CARGO Ship Operations



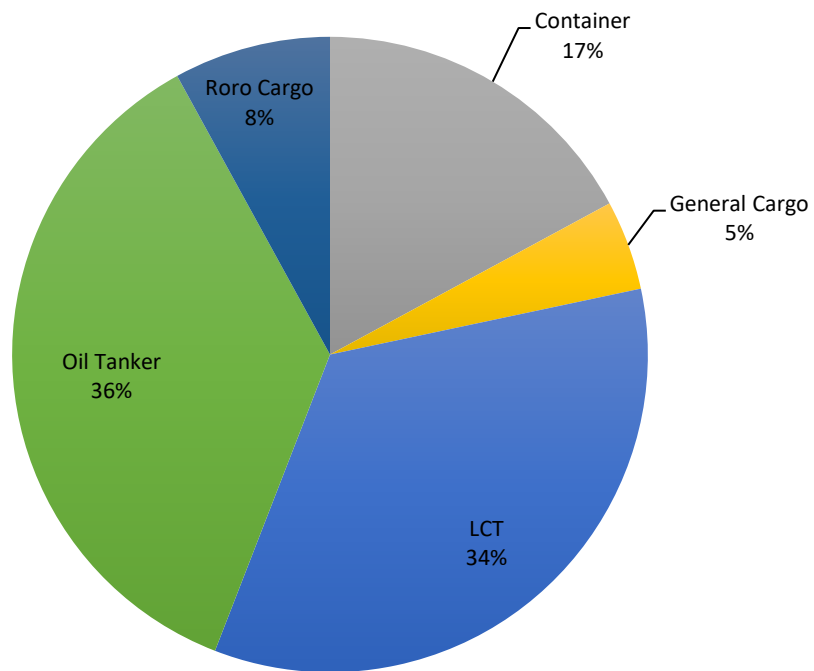
PASSENGER and CARGO Ship Operations



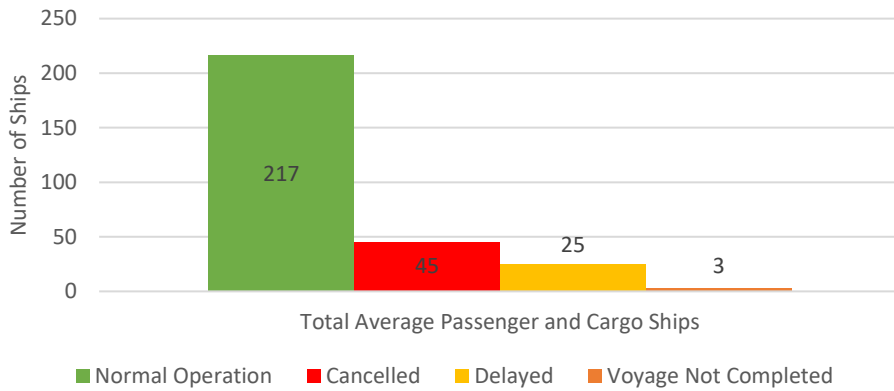
Passenger Ship Types under Normal Operations



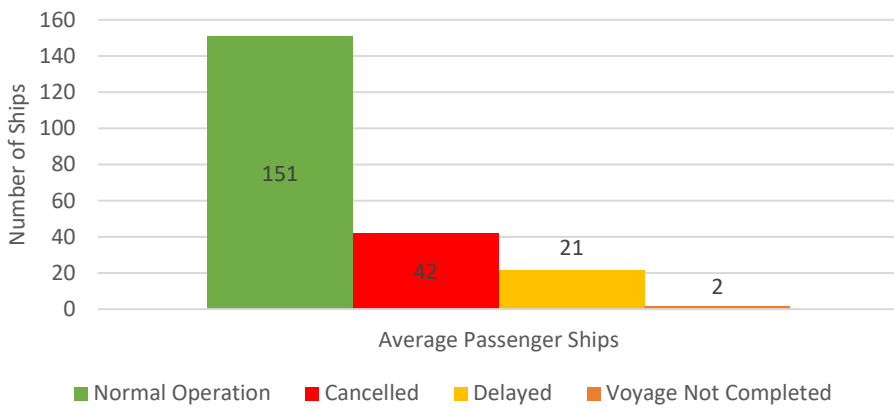
Cargo Ship Types under Normal Operations



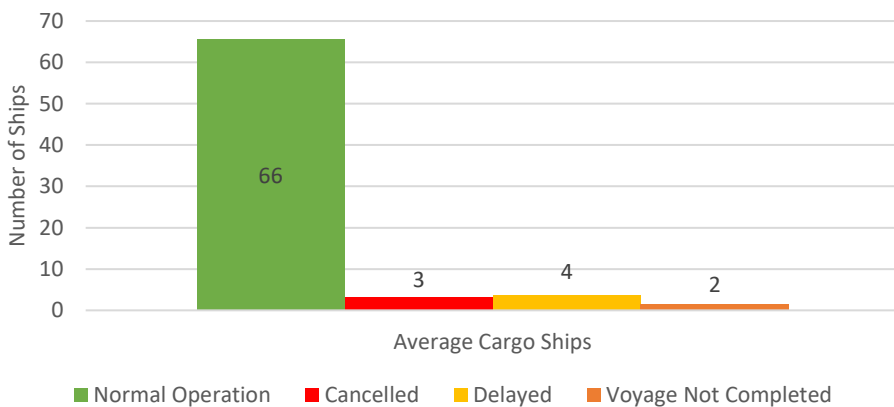
Daily Average Passenger and Cargo Ship Operation



Daily Average Passenger Ship Operation



Daily Average Cargo Ship Operation





WEEKLY STATUS OF SHIPPING OPERATIONS

20 March to 18 June 2020

