



MARITIME INDUSTRY AUTHORITY WEEKLY SUMMARY SITUATION REPORT – 14

Passenger and Cargo Shipping Operations on June 19 to 25, 2020
in areas under MECQ, MGCQ, and GCQ

Data generated on June 19 to 25, 2020, 3:00 PM

HIGHLIGHTS

- Fifty-six percent (77%) of passenger and cargo shipping operations were completed in accordance with the ships' CPC.
- Forty-four percent (23%) of the shipping operations were affected due to the measures implemented in view Code Red Sublevel 2 for the COVID-19.
- Operations of passenger ships were more affected compared to cargo ships. 93% of the cargo shipping operations were completed under normal conditions compared to passenger ships at 73%.
- Daily average passenger and cargo ship operations are 247 completed under normal conditions, 50 cancelled trips, 22 delayed and 0 not completed voyages.
- **With cargo shipping still operational, transport of goods amid MECQ, MGCQ, and GCQ is assured.**

PASSENGER AND CARGO SHIPPING IN NUMBERS

June 19 to 25, 2020

1277 Shipping Operations Recorded

1013 Passenger Ships Operated

264 Cargo Ships Operated

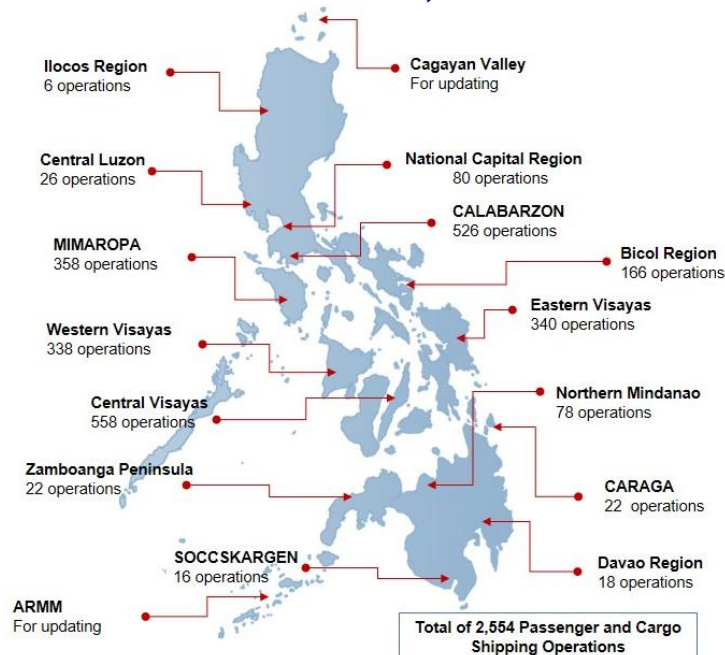
987 Ships Operated Normally

201 Operations Cancelled

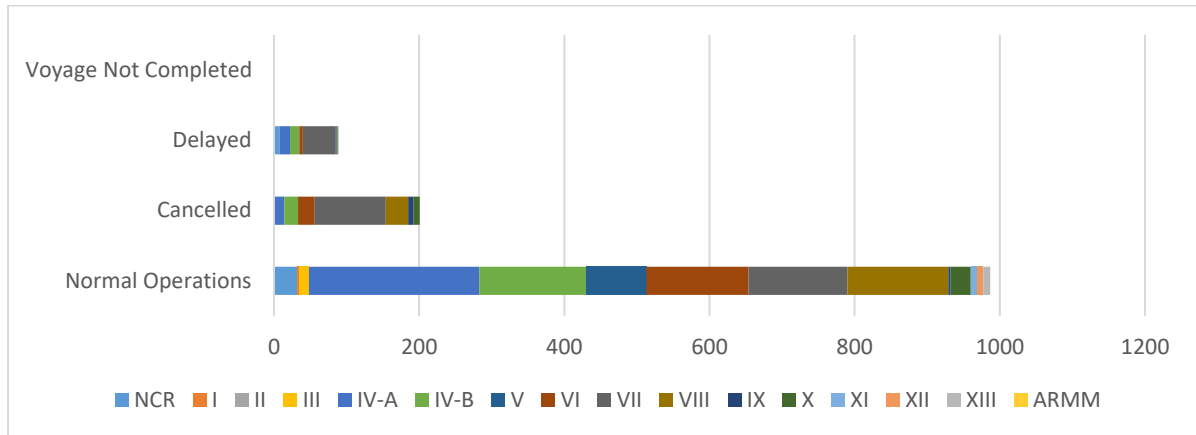
89 Operations Delayed

0 Operation Uncompleted

PASSENGER AND CARGO SHIPPING OPERATIONS IN THE PHILIPPINES IN AREAS UNDER MECQ, MGCQ and GCQ



I. STATUS OF SHIPPING OPERATIONS NATIONWIDE



On June 19 to 25, 2020, there were 1,277 passenger and cargo shipping operations conducted wherein 987 or 77% were completed in accordance with their Certificate of Public Convenience (CPC).

Out of the 987 operations completed under normal conditions, the reported movements were mostly in the Calabarzon Region at 24% and Mimaropa Region at 15%.

Meanwhile, 16% of the passenger and cargo shipping operations were cancelled, all due to the community quarantine measures imposed by the different local government units governing the ships' ports of destination. Mostly affected were operations in the Central Visayas and Eastern Visayas Regions.

Seventy-six (76) passenger ships or 8% encountered delays due to the additional measures adopted in view of COVID-19 such as temperature screening and inspections.

Lastly, no passenger and cargo shipping operation was not completed at the time of reporting.

II. STATUS OF SHIPPING OPERATIONS BY CLASSIFICATION

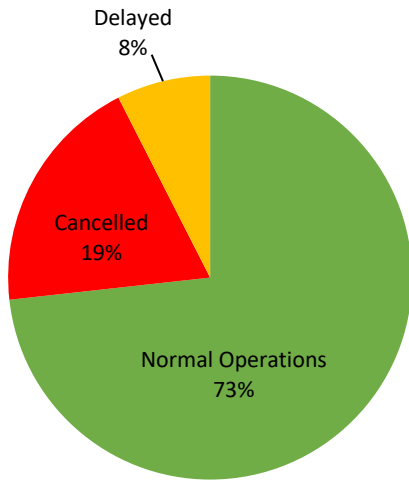
Region	Normal Operations		Cancelled		Delayed		Not Completed	
	Passenger	Cargo	Passenger	Cargo	Passenger	Cargo	Passenger	Cargo
NCR	9	23	0	0	5	3	0	0
I	0	3	0	0	0	0	0	0
II	0	0	0	0	0	0	0	0
III	0	13	0	0	0	0	0	0
IV-A	219	16	14	0	14	0	0	0
IV-B	146	1	19	0	11	2	0	0
V	78	5	0	0	0	0	0	0
VI	106	35	20	3	5	0	0	0
VII	28	108	95	3	37	8	0	0
VIII	122	17	31	0	0	0	0	0
IX	2	1	7	0	1	0	0	0
X	21	7	9	0	2	0	0	0
XI	1	8	0	0	0	0	0	0
XII	1	7	0	0	0	0	0	0
XIII	9	1	0	0	1	0	0	0
ARMM	0	0	0	0	0	0	0	0
Total	742	245	195	6	76	13	0	0

Amid the measures in place due to MECQ, MGCQ, and GCQ, 245 out of 264 (93%) cargo ships still operated normally – are 49 container ships, 6 general cargo ships, 93 LCT ships, 52 oil tankers, 40 Roro cargo ships and 5 other cargo.

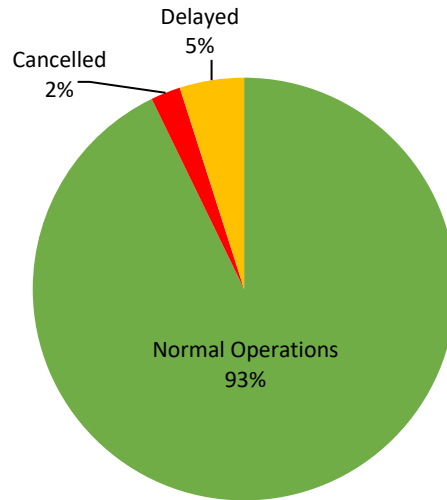
Seven-hundred forty-two (742) passenger ships completed their voyage – 638 conventional passenger ships, 97 RoPax ships and 7 fast craft ferries completed their operations but mostly only carried cargoes during their voyage.

Meanwhile out of the 1,013 passenger ships, 27% were affected by the measures adopted in view of COVID-19. These measures caused either the cancellation, delay, or uncompleted operations of 271 passenger ships.

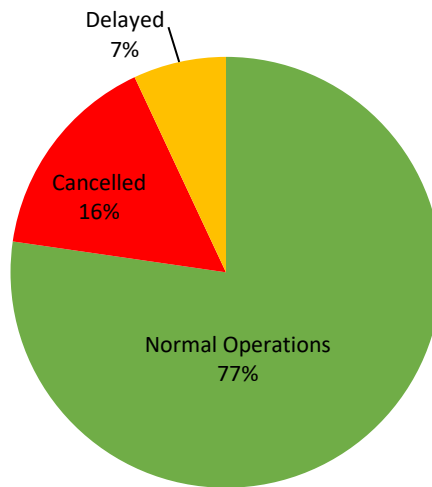
PASSENGER Ship Operations



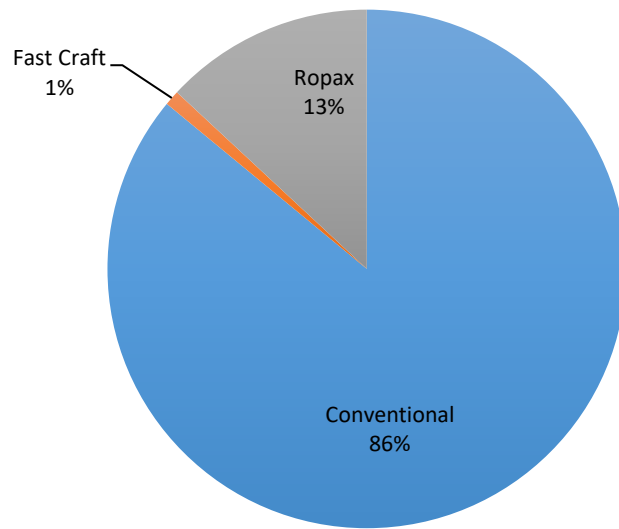
CARGO Ship Operations



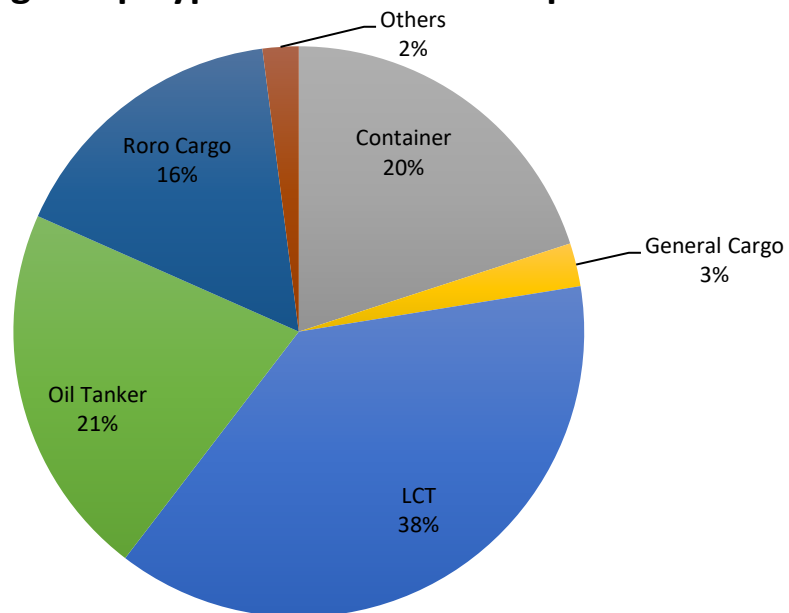
PASSENGER and CARGO Ship Operations



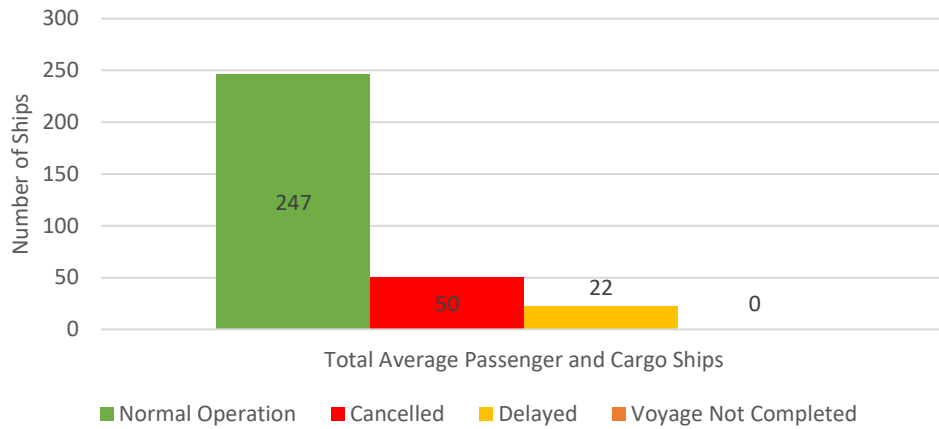
Passenger Ship Types under Normal Operations



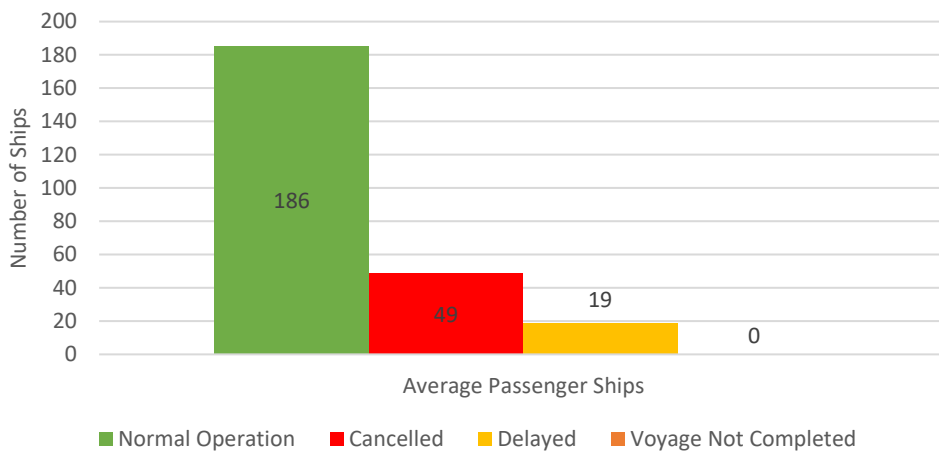
Cargo Ship Types under Normal Operations



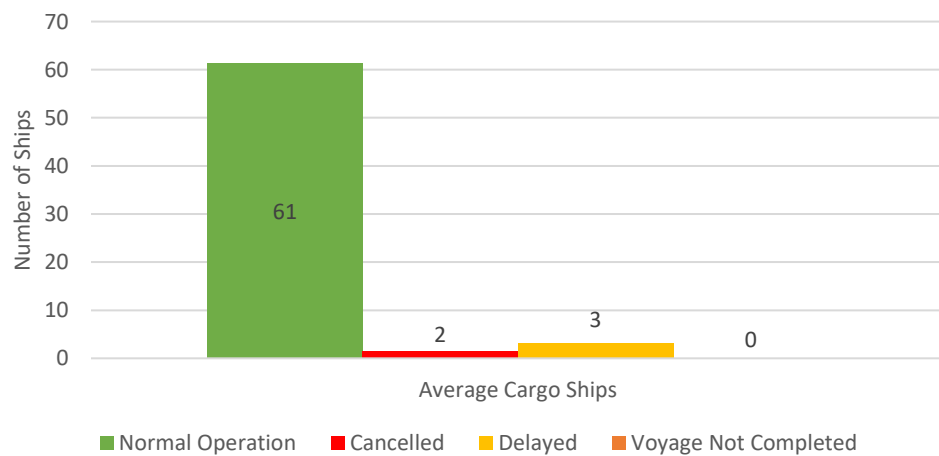
Daily Average Passenger and Cargo Ship Operation



Daily Average Passenger Ship Operation



Daily Average Cargo Ship Operation





WEEKLY STATUS OF SHIPPING OPERATIONS

20 March to 25 June 2020

