



## MARITIME INDUSTRY AUTHORITY WEEKLY SUMMARY SITUATION REPORT – 19

Passenger and Cargo Shipping Operations on July 24 to 30, 2020  
in areas under MECQ, MGCQ, and GCQ  
*Data generated on July 24 to 30, 2020, 3:00 PM*

### HIGHLIGHTS

- Seventy-five percent (75%) of passenger and cargo shipping operations were completed in accordance with the ships' CPC.
- Twenty-five percent (25%) of the shipping operations were affected due to the measures implemented in view Code Red Sublevel 2 for the COVID-19.
- Operations of passenger ships were more affected compared to cargo ships. 94% of the cargo shipping operations were completed under normal conditions compared to passenger ships at 69%.
- Daily average passenger and cargo ship operations are 207 completed under normal conditions, 38 cancelled trips, 29 delayed and 1 not completed voyage.

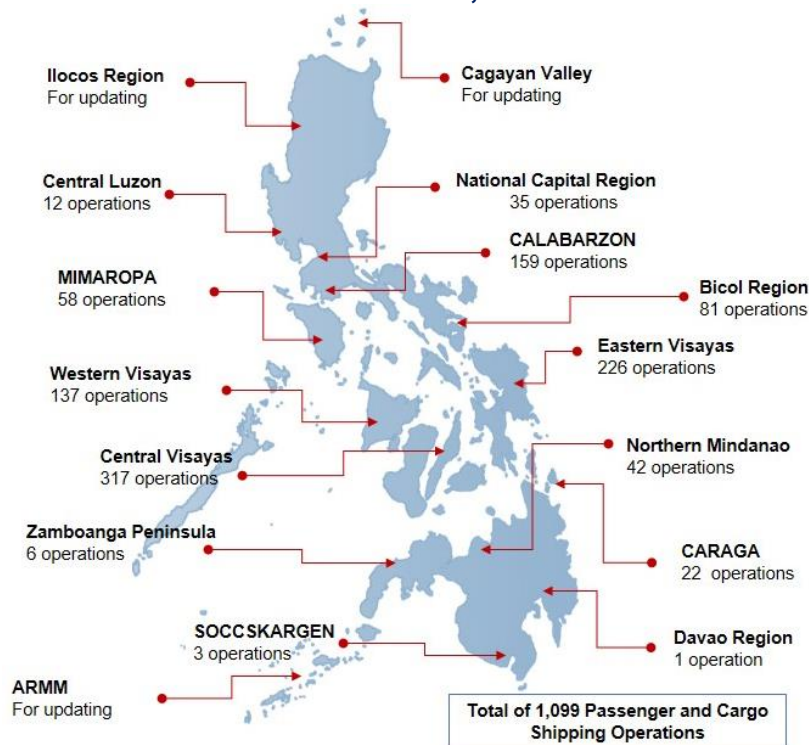
### PASSENGER AND CARGO SHIPPING IN NUMBERS

July 24 to 30, 2020

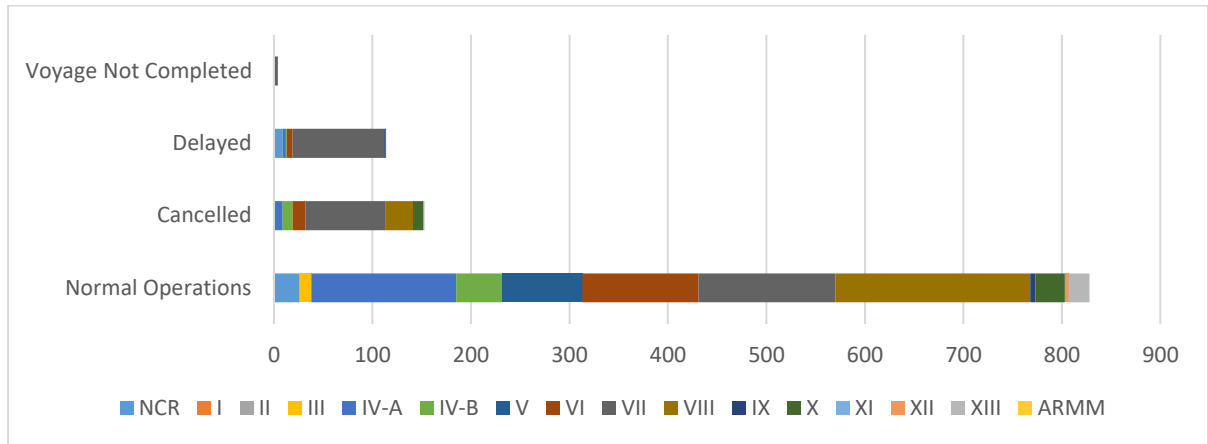
- 1099** Shipping Operations Recorded
- 830** Passenger Ships Operated
- 269** Cargo Ships Operated
- 828** Ships Operated Normally
- 153** Operations Cancelled
- 114** Operations Delayed
- 4** Operations Uncompleted

- With cargo shipping still operational, transport of goods amid MECQ, MGCQ, and GCQ is assured.**

### PASSENGER AND CARGO SHIPPING OPERATIONS IN THE PHILIPPINES IN AREAS UNDER MECQ, MGCQ and GCQ



## I. STATUS OF SHIPPING OPERATIONS NATIONWIDE



On July 24 to 30, 2020, there were 1099 passenger and cargo shipping operations conducted wherein 828 or 75% were completed in accordance with their Certificate of Public Convenience (CPC).

Out of the 828 operations completed under normal conditions, the reported movements were mostly in the Eastern Visayas Region at 24% and Calabarzon Region at 18%.

Meanwhile, 14% of the passenger and cargo shipping operations were cancelled, all due to the community quarantine measures imposed by the different local government units governing the ships' ports of destination. Mostly affected were operations in the Central Visayas and Eastern Visayas Regions.

One-hundred six (106) passenger ships or 13% encountered delays due to the additional measures adopted in view of COVID-19 such as temperature screening and inspections.

Lastly, four (4) passenger shipping operations were not completed at the time of reporting, as the respective ships were still underway.

## II. STATUS OF SHIPPING OPERATIONS BY CLASSIFICATION

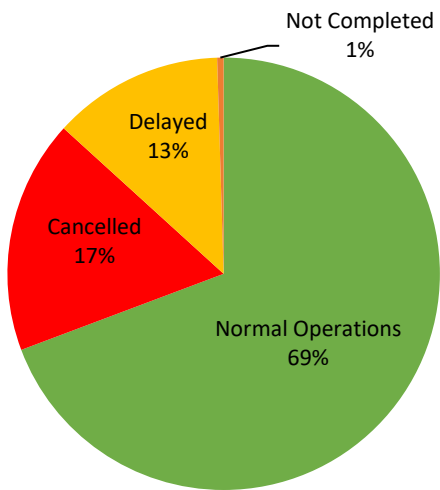
Region	Normal Operations		Cancelled		Delayed		Not Completed	
	Passenger	Cargo	Passenger	Cargo	Passenger	Cargo	Passenger	Cargo
<b>NCR</b>	13	13	0	0	6	3	0	0
<b>I</b>	0	0	0	0	0	0	0	0
<b>II</b>	0	0	0	0	0	0	0	0
<b>III</b>	0	12	0	0	0	0	0	0
<b>IV-A</b>	137	10	9	0	3	0	0	0
<b>IV-B</b>	44	3	10	0	1	0	0	0
<b>V</b>	75	6	0	0	0	0	0	0
<b>VI</b>	58	60	13	0	6	0	0	0
<b>VII</b>	16	123	74	7	88	5	4	0
<b>VIII</b>	178	20	28	0	0	0	0	0
<b>IX</b>	3	2	0	0	1	0	0	0
<b>X</b>	28	2	11	0	1	0	0	0
<b>XI</b>	1	0	0	0	0	0	0	0
<b>XII</b>	1	2	0	0	0	0	0	0
<b>XIII</b>	21	0	0	1	0	0	0	0
<b>ARMM</b>	0	0	0	0	0	0	0	0
<b>Total</b>	<b>575</b>	<b>253</b>	<b>145</b>	<b>8</b>	<b>106</b>	<b>8</b>	<b>4</b>	<b>0</b>

Amid the measures in place due to MECQ, MGCQ, and GCQ, 253 out of 269 (94%) cargo ships still operated normally – are 13 container ships, 6 general cargo ships, 138 LCT ships, 47 oil tankers, 38 Roro cargo ships and 11 other cargos.

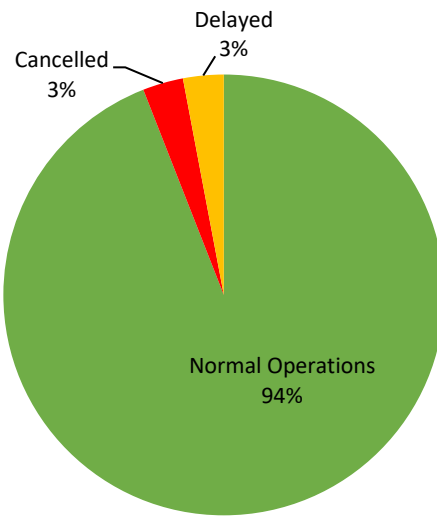
Five-hundred seventy-five (575) passenger ships completed their voyage – 498 conventional passenger ships, 76 RoPax ships and 1 fast craft ferry completed their operations but mostly only carried cargoes during their voyage.

Meanwhile out of the 830 passenger ships, 31% were affected by the measures adopted in view of COVID-19. These measures caused either the cancellation, delay, or uncompleted operations of 255 passenger ships.

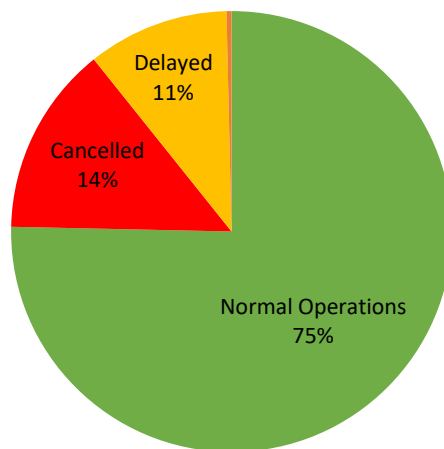
### PASSENGER Ship Operations



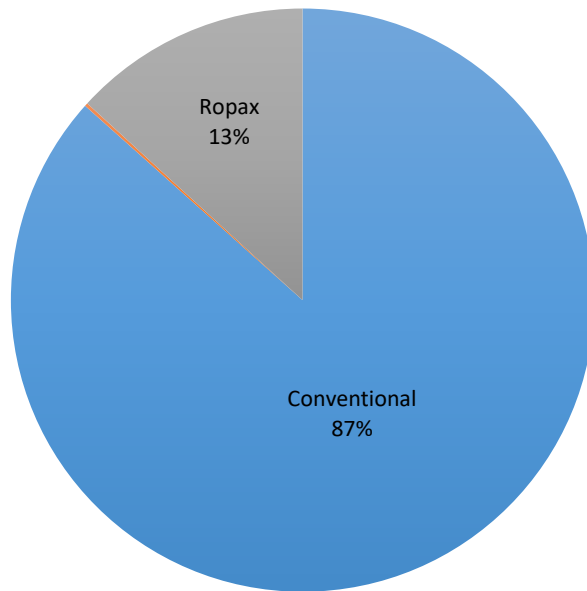
### CARGO Ship Operations



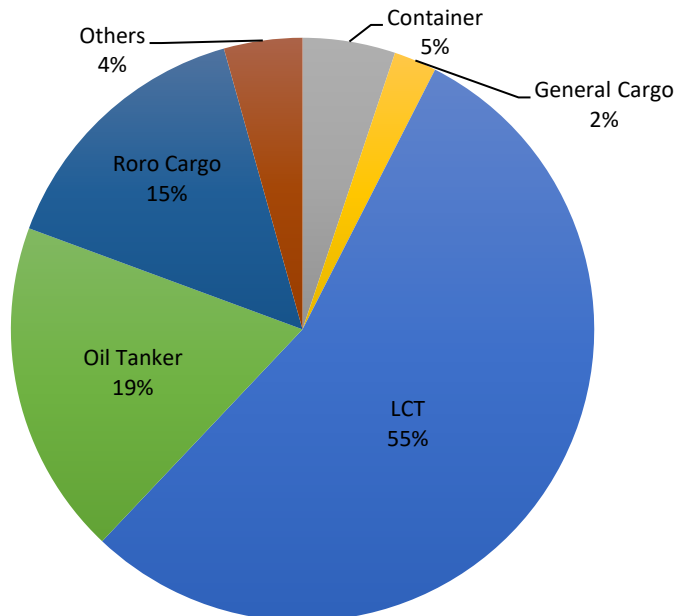
### PASSENGER and CARGO Ship Operations

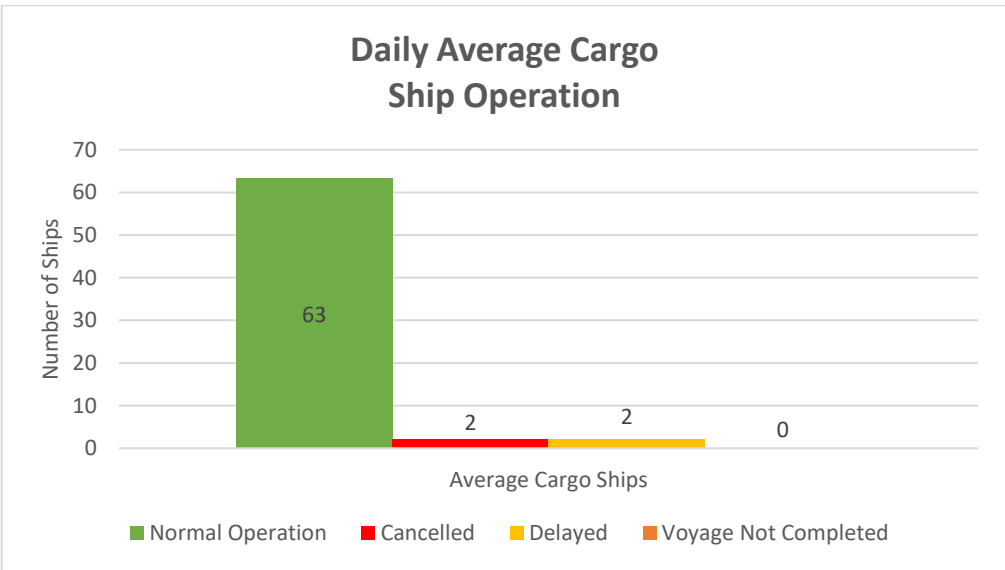
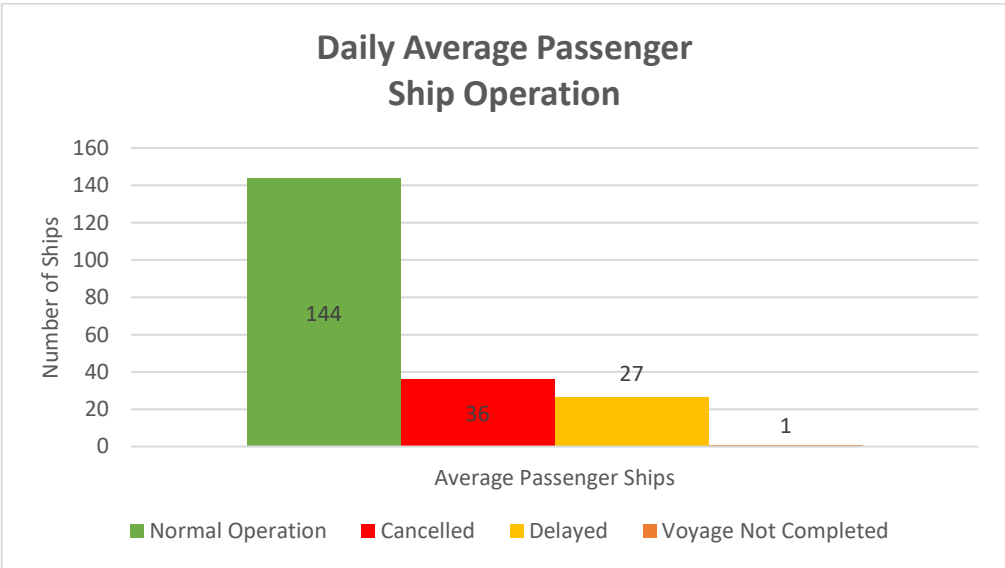
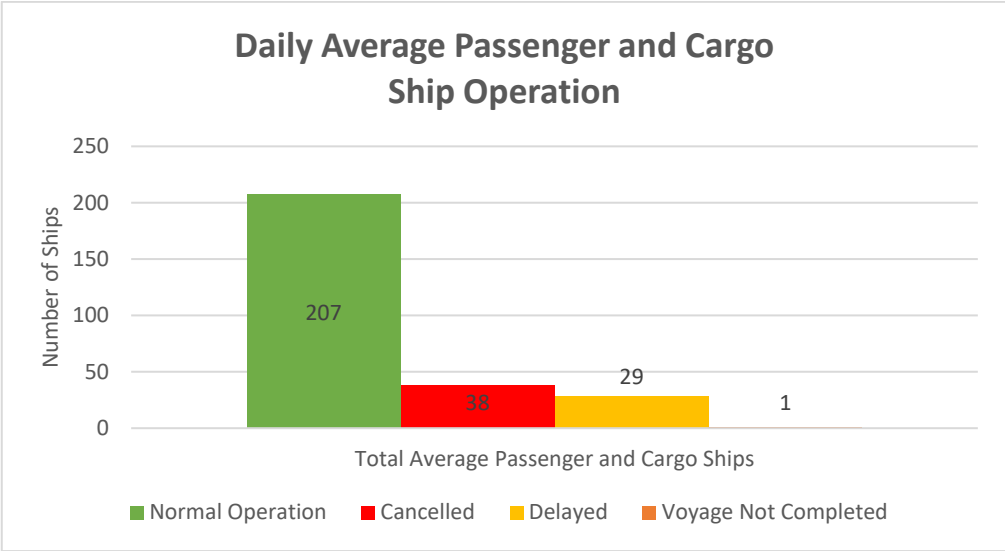


### Passenger Ship Types under Normal Operations



### Cargo Ship Types under Normal Operations





# WEEKLY STATUS OF SHIPPING OPERATIONS

20 March to 30 July 2020

