



MARITIME INDUSTRY AUTHORITY WEEKLY SUMMARY SITUATION REPORT – 15

Passenger and Cargo Shipping Operations on June 26 to July 02, 2020
in areas under MECQ, MGCQ, and GCQ
Data generated on July 02, 2020, 3:00 PM

HIGHLIGHTS

- Seventy-two percent (72%) of passenger and cargo shipping operations were completed in accordance with the ships' CPC.
- Twenty-eight percent (28%) of the shipping operations were affected due to the measures implemented in view Code Red Sublevel 2 for the COVID-19.
- Operations of passenger ships were more affected compared to cargo ships. 93% of the cargo shipping operations were completed under normal conditions compared to passenger ships at 66%.
- Daily average passenger and cargo ship operations are 234 completed under normal conditions, 62 cancelled trips, 26 delayed and 2 not completed voyages.
- With cargo shipping still operational, transport of goods amid MECQ, MGCQ, and GCQ is assured.**

PASSENGER AND CARGO SHIPPING IN NUMBERS

June 26 to July 02, 2020

1296 Shipping Operations Recorded

990 Passenger Ships Operated

306 Cargo Ships Operated

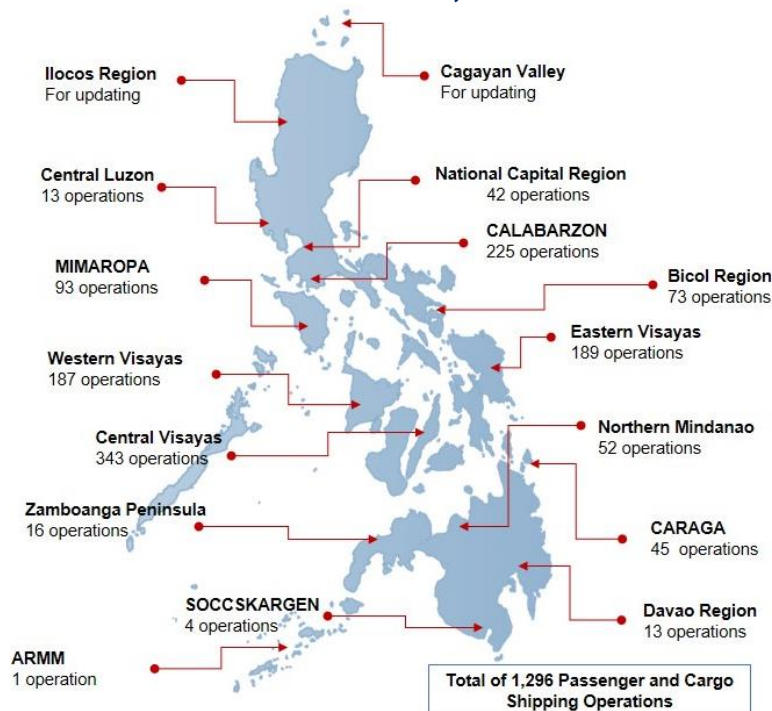
937 Ships Operated Normally

246 Operations Cancelled

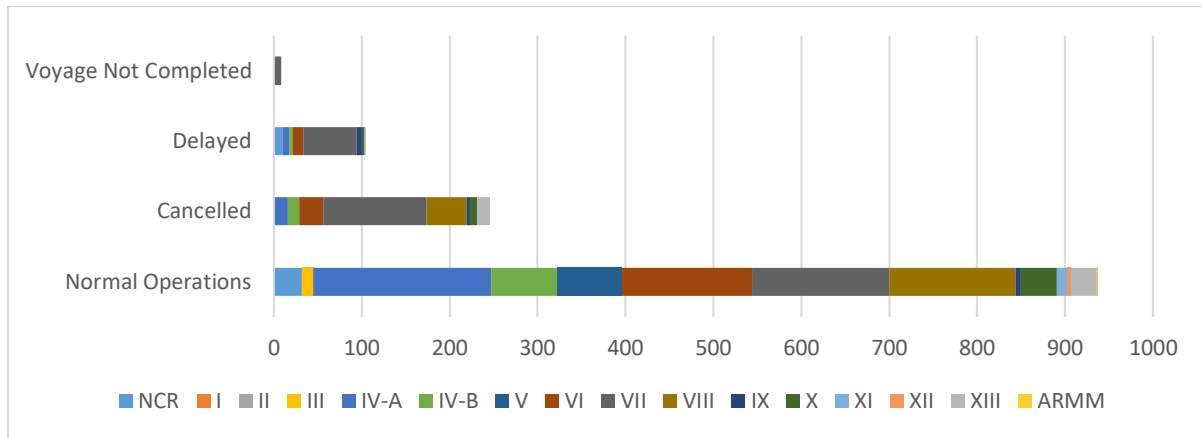
105 Operations Delayed

8 Operations Uncompleted

PASSENGER AND CARGO SHIPPING OPERATIONS IN THE PHILIPPINES IN AREAS UNDER MECQ, MGCQ and GCQ



I. STATUS OF SHIPPING OPERATIONS NATIONWIDE



From June 26 to July 02, 2020, there were 1296 passenger and cargo shipping operations conducted wherein 937 or 72% were completed in accordance with their Certificate of Public Convenience (CPC).

Out of the 937 operations completed under normal conditions, the reported movements were mostly in the Calabarzon Region at 22% and Central Visayas Regions at 17%.

Meanwhile, 19% of the passenger and cargo shipping operations were cancelled, all due to the community quarantine measures imposed by the different local government units governing the ships' ports of destination. Mostly affected were operations in the Central Visayas and Eastern Visayas Regions.

Ninety-six (96) passenger ships or 9.5% encountered delays due to the additional measures adopted in view of COVID-19 such as temperature screening and inspections.

Lastly, five (5) passenger and three (3) cargo shipping operations were not completed at the time of reporting, as the respective ships were still underway.

II. STATUS OF SHIPPING OPERATIONS BY CLASSIFICATION

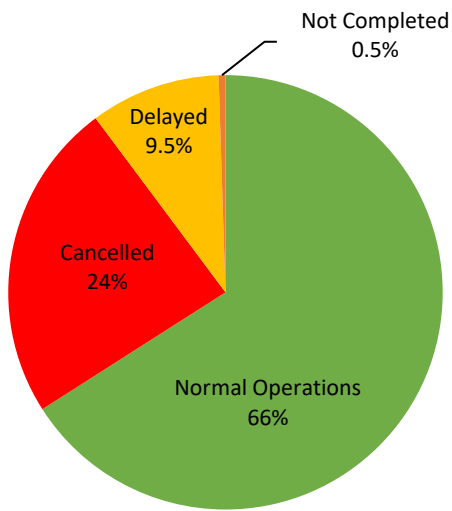
Region	Normal Operations		Cancelled		Delayed		Not Completed	
	Passenger	Cargo	Passenger	Cargo	Passenger	Cargo	Passenger	Cargo
NCR	13	19	0	0	9	1	0	0
I	0	0	0	0	0	0	0	0
II	0	0	0	0	0	0	0	0
III	0	13	0	0	0	0	0	0
IV-A	189	13	16	0	7	0	0	0
IV-B	70	6	13	0	4	0	0	0
V	65	8	0	0	0	0	0	0
VI	108	40	17	10	12	0	0	0
VII	27	129	118	0	54	7	5	3
VIII	128	16	45	0	0	0	0	0
IX	3	3	4	0	6	0	0	0
X	21	20	8	0	3	0	0	0
XI	1	11	0	0	0	1	0	0
XII	0	4	0	0	0	0	0	0
XIII	28	1	15	0	1	0	0	0
ARMM	0	1	0	0	0	0	0	0
Total	653	284	236	10	96	9	5	3

Amid the measures in place due to MECQ, MGCQ, and GCQ, 284 out of 306 (93%) cargo ships still operated normally – are 1 bulk carrier, 37 container ships, 15 general cargo ships, 109 LCT ships, 61 oil tankers, 41 Roro cargo ships and 20 other cargo ships.

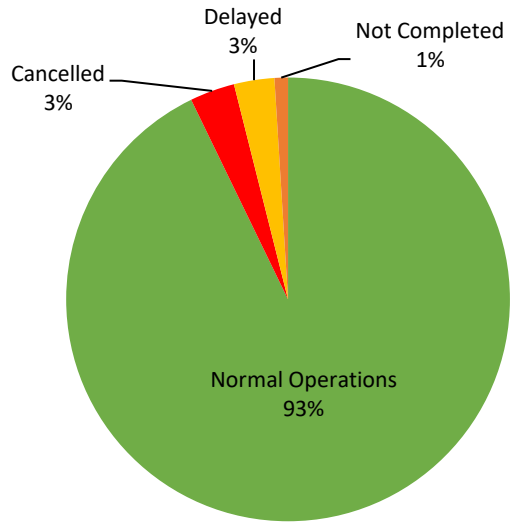
Six-hundred fifty-three (653) passenger ships completed their voyage – 577 conventional passenger ships, 67 RoPax ships and 9 fast craft ferries completed their operations but mostly only carried cargoes during their voyage.

Meanwhile out of the 990 passenger ships, 34% were affected by the measures adopted in view of COVID-19. These measures caused either the cancellation, delay, or uncompleted operations of 337 passenger ships.

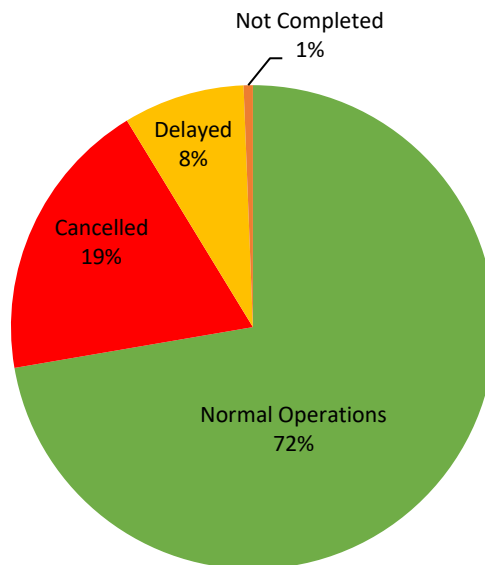
PASSENGER Ship Operations



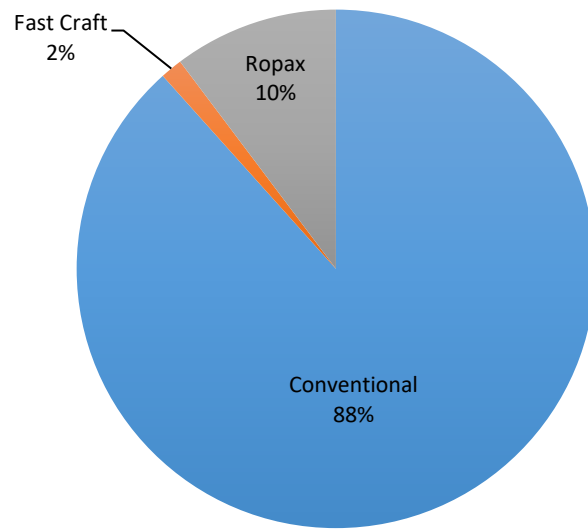
CARGO Ship Operations



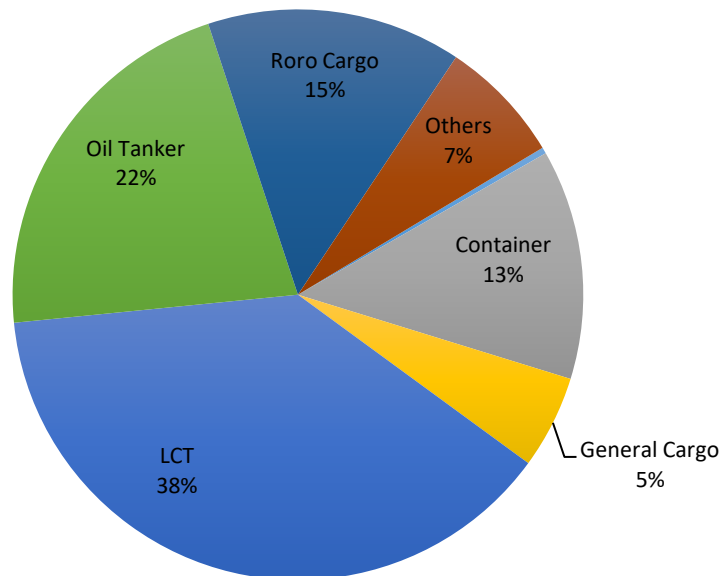
PASSENGER and CARGO Ship Operations



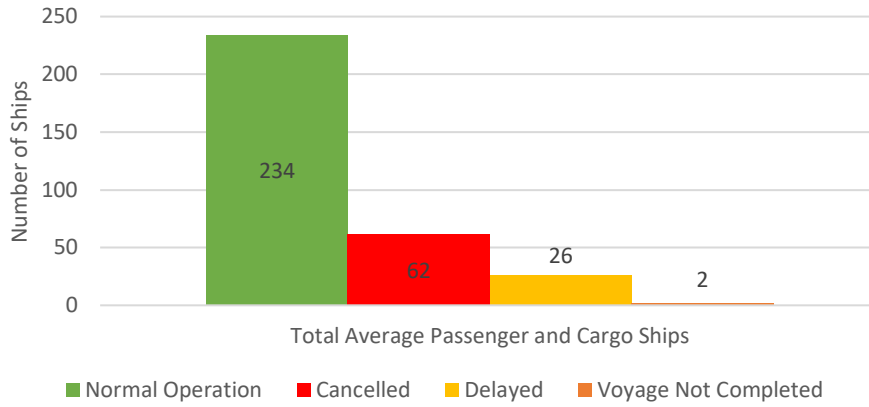
Passenger Ship Types under Normal Operations



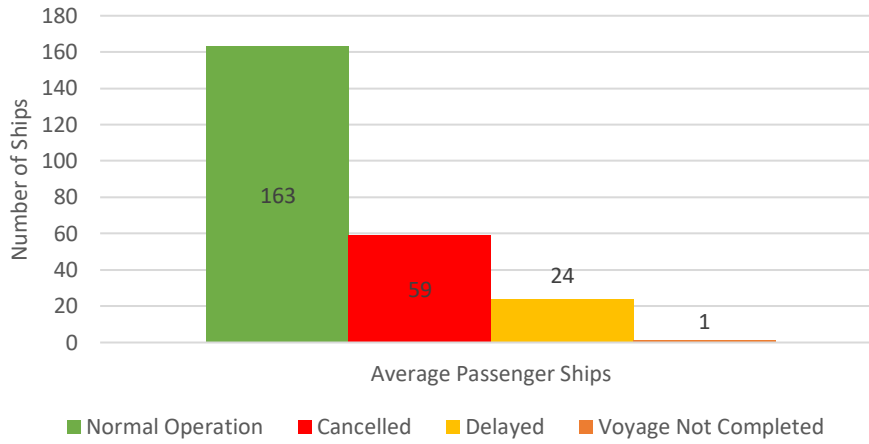
Cargo Ship Types under Normal Operations



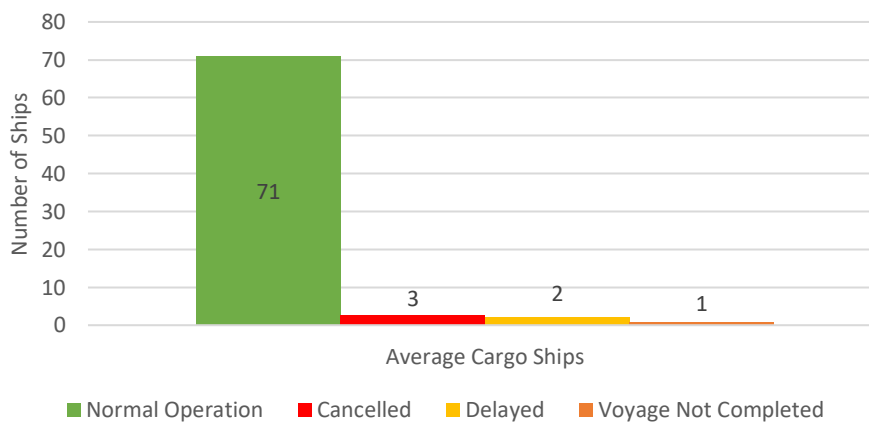
Daily Average Passenger and Cargo Ship Operation



Daily Average Passenger Ship Operation



Daily Average Cargo Ship Operation





WEEKLY STATUS OF SHIPPING OPERATIONS

20 March to 02 July 2020

■ Total number of ships per week (passenger and cargo) ● Total number of passenger ships per week
● Total number of cargo ships per week

