



MARITIME INDUSTRY AUTHORITY WEEKLY SUMMARY SITUATION REPORT – 18

Passenger and Cargo Shipping Operations on July 17 to 23, 2020
in areas under MECQ, MGCQ, and GCQ
Data generated on July 17 to 23, 2020, 3:00 PM

HIGHLIGHTS

- Seventy-six percent (76%) of passenger and cargo shipping operations were completed in accordance with the ships' CPC.
- Twenty-four percent (24%) of the shipping operations were affected due to the measures implemented in view Code Red Sublevel 2 for the COVID-19.
- Operations of passenger ships were more affected compared to cargo ships. 92% of the cargo shipping operations were completed under normal conditions compared to passenger ships at 70%.
- Daily average passenger and cargo ship operations are 209 completed under normal conditions, 36 cancelled trips, 33 delayed and 0 not completed voyage.

PASSENGER AND CARGO SHIPPING IN NUMBERS

July 17 to 23, 2020

1107 Shipping Operations Recorded

845 Passenger Ships Operated

262 Cargo Ships Operated

837 Ships Operated Normally

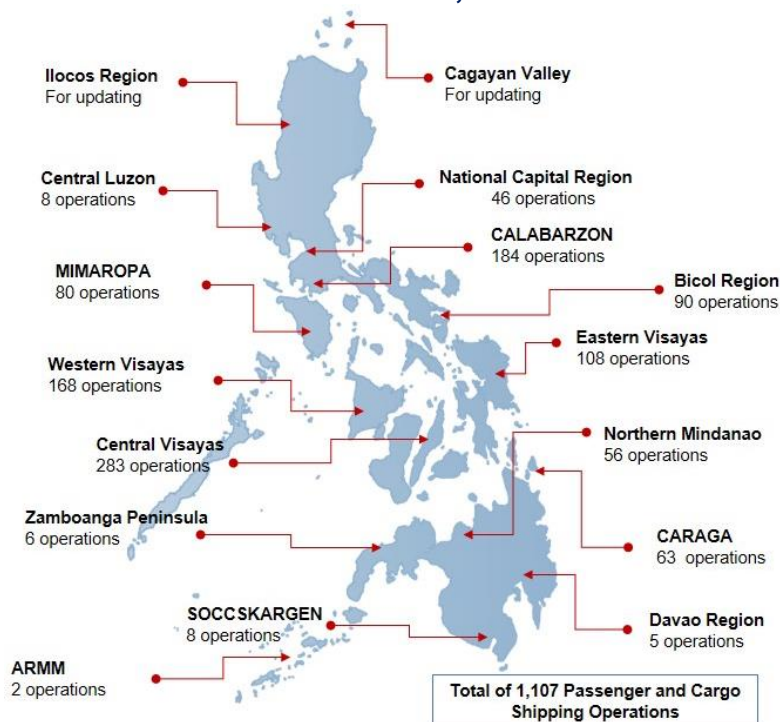
138 Operations Cancelled

132 Operations Delayed

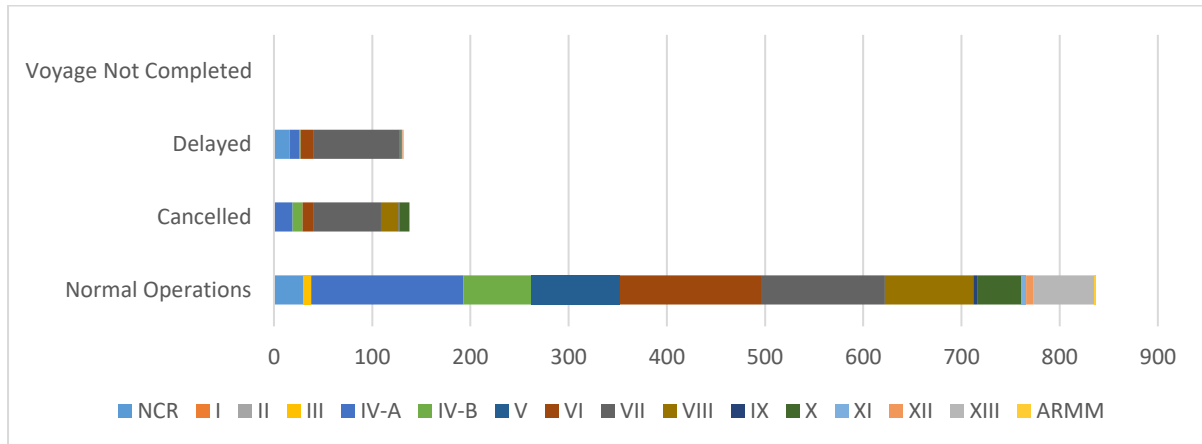
0 Operation Uncompleted

- With cargo shipping still operational, transport of goods amid MECQ, MGCQ, and GCQ is assured.**

PASSENGER AND CARGO SHIPPING OPERATIONS IN THE PHILIPPINES IN AREAS UNDER MECQ, MGCQ and GCQ



I. STATUS OF SHIPPING OPERATIONS NATIONWIDE



On July 17 to 23, 2020, there were 1,107 passenger and cargo shipping operations conducted wherein 837 or 76% were completed in accordance with their Certificate of Public Convenience (CPC).

Out of the 837 operations completed under normal conditions, the reported movements were mostly in the Calabarzon Region at 19% and Western Visayas Region at 17%.

Meanwhile, 12% of the passenger and cargo shipping operations were cancelled, all due to the community quarantine measures imposed by the different local government units governing the ships' ports of destination. Mostly affected were operations in the Central Visayas and Calabarzon Regions.

One-hundred fourteen (114) passenger ships or 14% encountered delays due to the additional measures adopted in view of COVID-19 such as temperature screening and inspections.

Lastly, there are no uncompleted shipping operations at the time of reporting.

II. STATUS OF SHIPPING OPERATIONS BY CLASSIFICATION

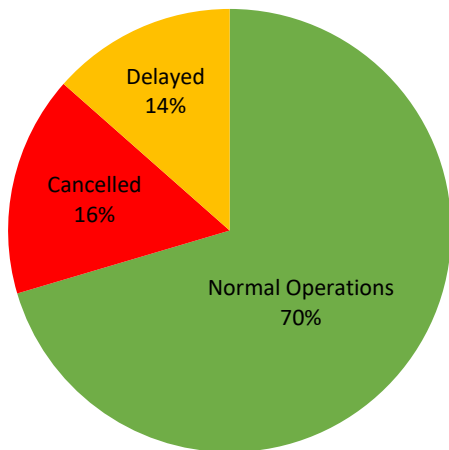
Region	Normal Operations		Cancelled		Delayed		Not Completed	
	Passenger	Cargo	Passenger	Cargo	Passenger	Cargo	Passenger	Cargo
NCR	8	22	0	0	12	4	0	0
I	0	0	0	0	0	0	0	0
II	0	0	0	0	0	0	0	0
III	0	8	0	0	0	0	0	0
IV-A	144	11	19	0	10	0	0	0
IV-B	59	10	10	0	1	0	0	0
V	83	7	0	0	0	0	0	0
VI	101	43	11	0	11	2	0	0
VII	15	111	67	2	76	12	0	0
VIII	86	4	18	0	0	0	0	0
IX	0	4	1	0	1	0	0	0
X	35	10	10	0	1	0	0	0
XI	1	4	0	0	0	0	0	0
XII	1	6	0	0	1	0	0	0
XIII	62	0	0	0	1	0	0	0
ARMM	0	2	0	0	0	0	0	0
Total	595	242	136	2	114	18	0	0

Amid the measures in place due to MECQ, MGCQ, and GCQ, 242 out of 262 (92%) cargo ships still operated normally – are 30 container ships, 8 general cargo ships, 88 LCT ships, 53 oil tankers, 40 Roro cargo ships and 23 other cargos.

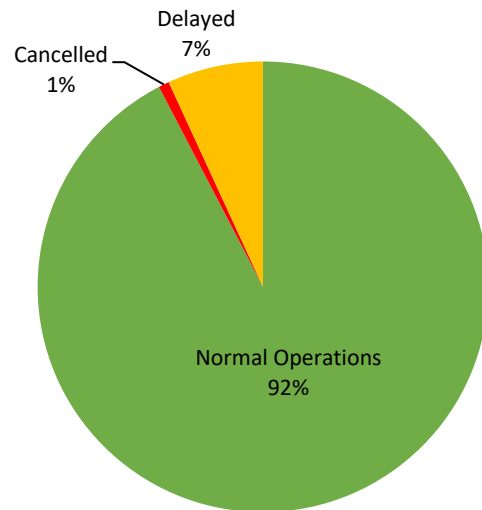
Five-hundred ninety five (595) passenger ships completed their voyage – 504 conventional passenger ships, 90 RoPax ships and 1 fast craft ferry completed their operations but mostly only carried cargoes during their voyage.

Meanwhile out of the 845 passenger ships, 30% were affected by the measures adopted in view of COVID-19. These measures caused either the cancellation, delay, or uncompleted operations of 250 passenger ships.

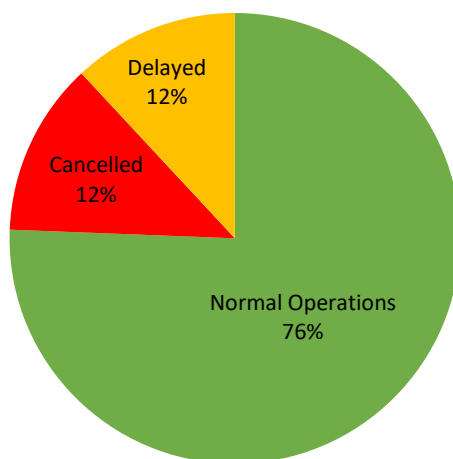
PASSENGER Ship Operations



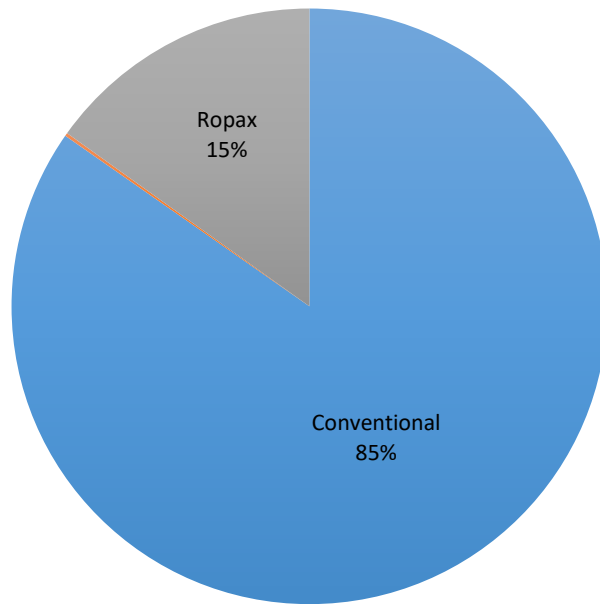
CARGO Ship Operations



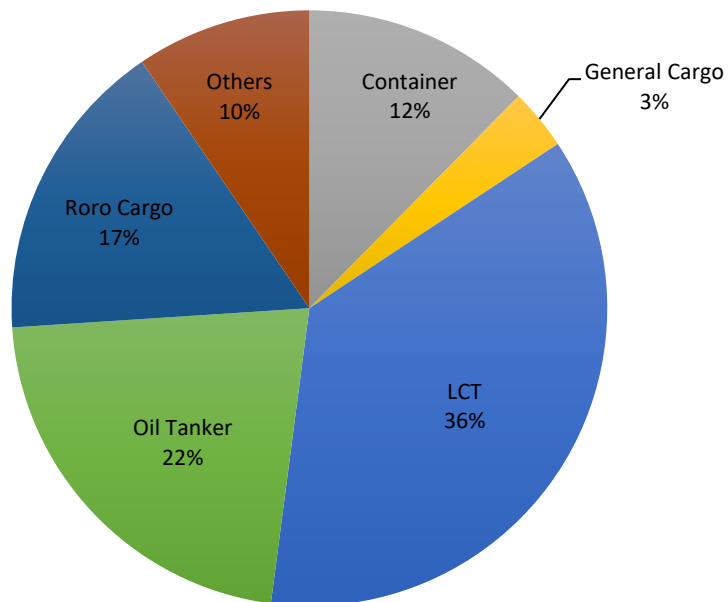
PASSENGER and CARGO Ship Operations

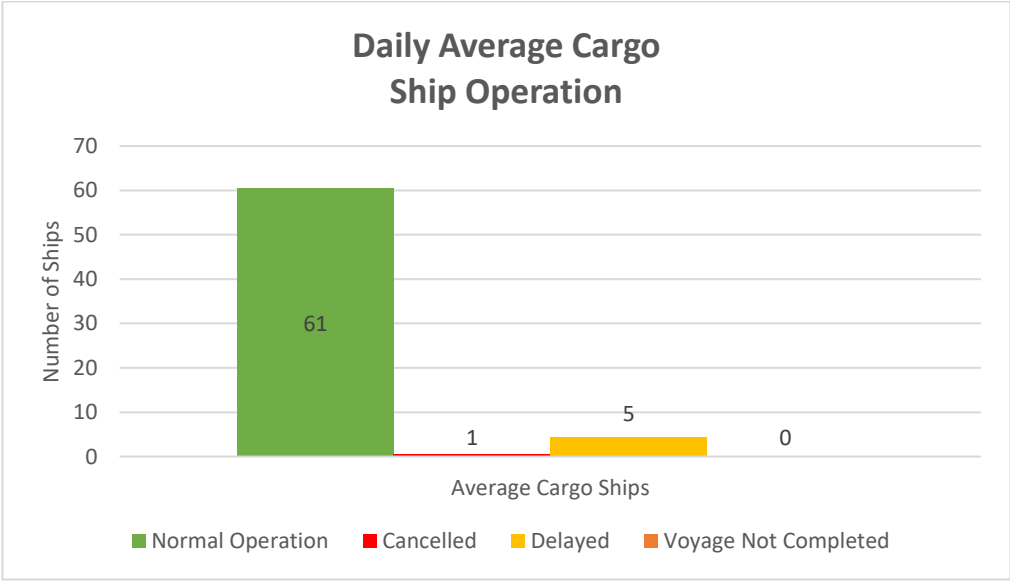
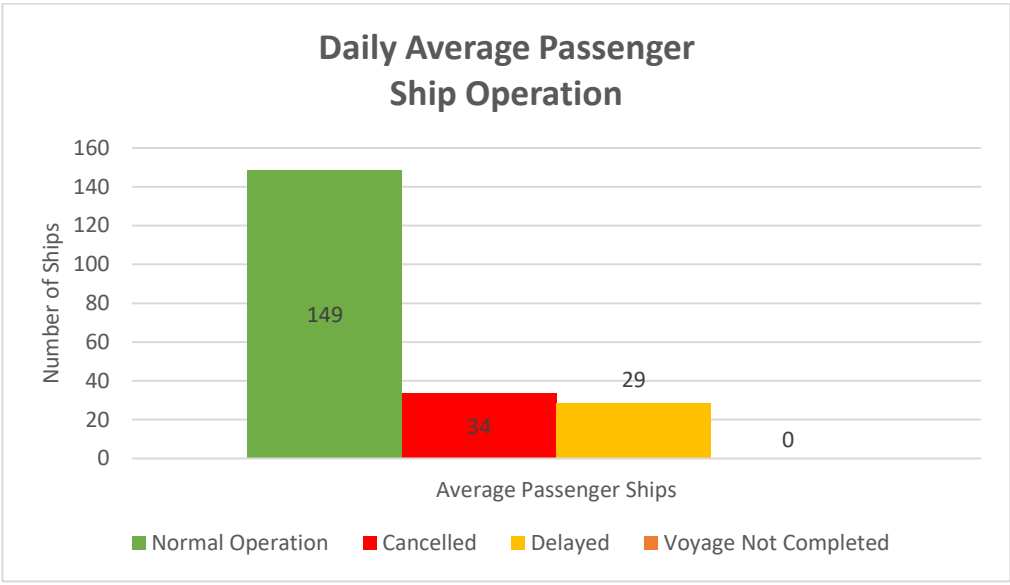
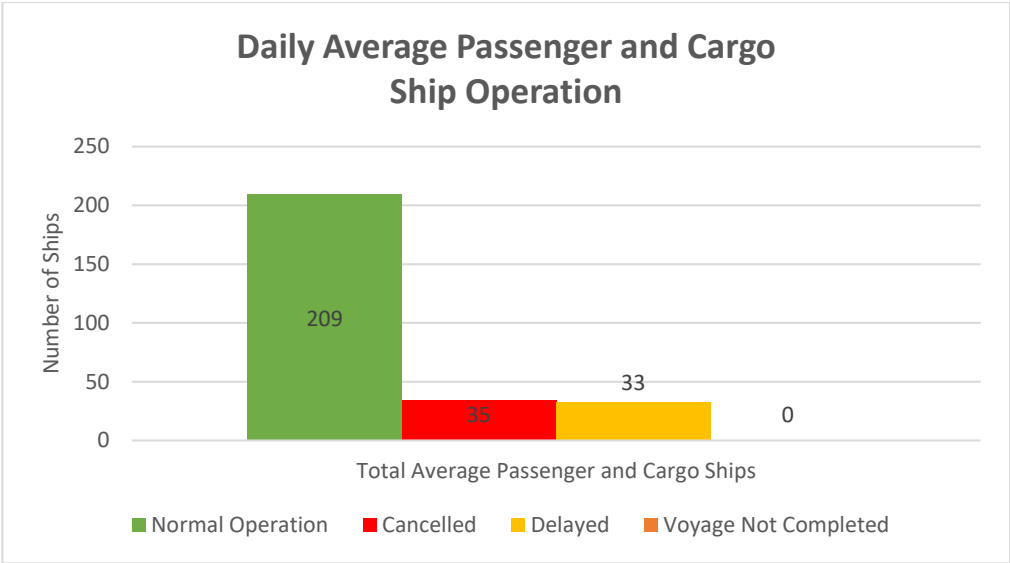


Passenger Ship Types under Normal Operations



Cargo Ship Types under Normal Operations







WEEKLY STATUS OF SHIPPING OPERATIONS

20 March to 23 July 2020

■ Total number of ships per week (passenger and cargo) ■ Total number of passenger ships per week
■ Total number of cargo ships per week

