



MARITIME INDUSTRY AUTHORITY WEEKLY SUMMARY SITUATION REPORT – 20

Passenger and Cargo Shipping Operations on July 31 to August 06, 2020
in areas under MECQ, MGCQ and GCQ

Data generated on July 31 to August 06, 2020, 3:00 PM

HIGHLIGHTS

- Seventy-four percent (74%) of passenger and cargo shipping operations were completed in accordance with the ships' CPC.
- Twenty-six percent (26%) of the shipping operations were affected due to the measures implemented in view Code Red Sublevel 2 for the COVID-19.
- Operations of passenger ships were more affected compared to cargo ships. 94% of the cargo shipping operations were completed under normal conditions compared to passenger ships at 68%.
- Daily average passenger and cargo ship operations are 179 completed under normal conditions, 31 cancelled trips, 32 delayed and 0 not completed voyage.
- With cargo shipping still operational, transport of goods amid MECQ, MGCQ, and GCQ is assured.

PASSENGER AND CARGO SHIPPING IN NUMBERS

July 31 to August 06, 2020

964 Shipping Operations Recorded

733 Passenger Ships Operated

231 Cargo Ships Operated

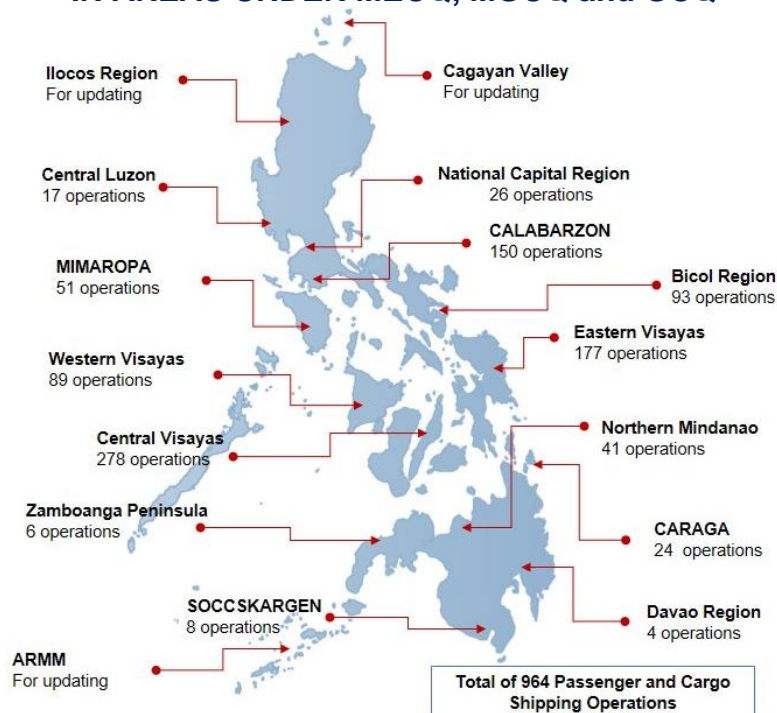
715 Ships Operated Normally

122 Operations Cancelled

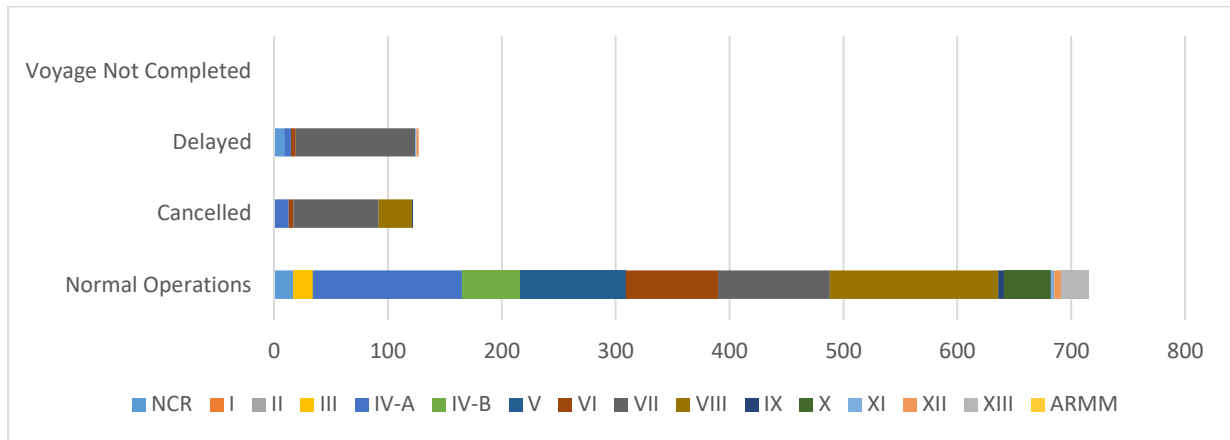
127 Operations Delayed

0 Operation Uncompleted

PASSENGER AND CARGO SHIPPING OPERATIONS IN THE PHILIPPINES IN AREAS UNDER MECQ, MGCQ and GCQ



I. STATUS OF SHIPPING OPERATIONS NATIONWIDE



On July 31 to August 06, 2020, there were 964 passenger and cargo shipping operations conducted wherein 715 or 74% were completed in accordance with their Certificate of Public Convenience (CPC).

Out of the 715 operations completed under normal conditions, the reported movements were mostly in the Calabarzon Region at 21% and Eastern Visayas Region at 18%.

Meanwhile, 13% of the passenger and cargo shipping operations were cancelled, all due to the community quarantine measures imposed by the different local government units governing the ships' ports of destination. Mostly affected were operations in the Central Visayas and Eastern Visayas Regions.

One hundred and twenty (120) passenger ships or 16% encountered delays due to the additional measures adopted in view of COVID-19 such as temperature screening and inspections.

Lastly, no passenger and cargo shipping operation was not completed at the time of reporting.

II. STATUS OF SHIPPING OPERATIONS BY CLASSIFICATION

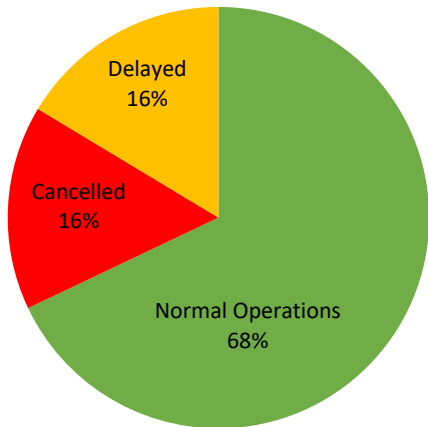
Region	Normal Operations		Cancelled		Delayed		Not Completed	
	Passenger	Cargo	Passenger	Cargo	Passenger	Cargo	Passenger	Cargo
NCR	4	13	0	0	5	4	0	0
I	0	0	0	0	0	0	0	0
II	0	0	0	0	0	0	0	0
III	0	17	0	0	0	0	0	0
IV-A	118	13	13	0	6	0	0	0
IV-B	46	5	0	0	0	0	0	0
V	86	7	0	0	0	0	0	0
VI	39	42	4	0	4	0	0	0
VII	10	88	68	7	105	0	0	0
VIII	133	15	29	0	0	0	0	0
IX	0	5	1	0	0	0	0	0
X	36	5	0	0	0	0	0	0
XI	1	2	0	0	0	1	0	0
XII	1	5	0	0	0	2	0	0
XIII	24	0	0	0	0	0	0	0
ARMM	0	0	0	0	0	0	0	0
Total	498	217	115	7	120	7	0	0

Amid the measures in place due to MECQ, MGCQ, and GCQ, 217 out of 231 (94%) cargo ships still operated normally – are 7 container ships, 3 general cargo ships, 96 LCT ships, 72 oil tankers and 39 Roro cargo ships.

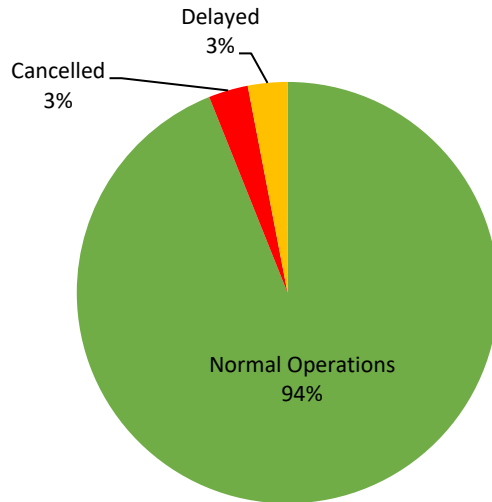
Four hundred ninety-eight (498) passenger ships completed their voyage – 423 conventional passenger ships and 75 RoPax ships completed their operations but mostly only carried cargoes during their voyage.

Meanwhile out of the 733 passenger ships, 32% were affected by the measures adopted in view of COVID-19. These measures caused either the cancellation, delay, or uncompleted operations of 235 passenger ships.

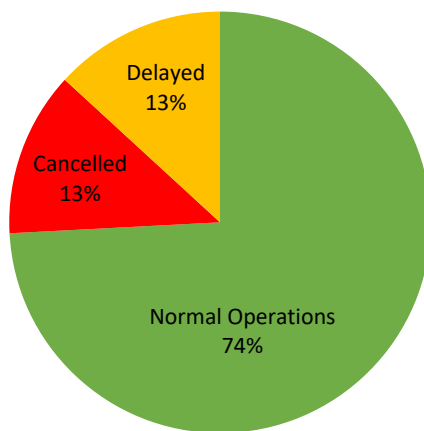
PASSENGER Ship Operations



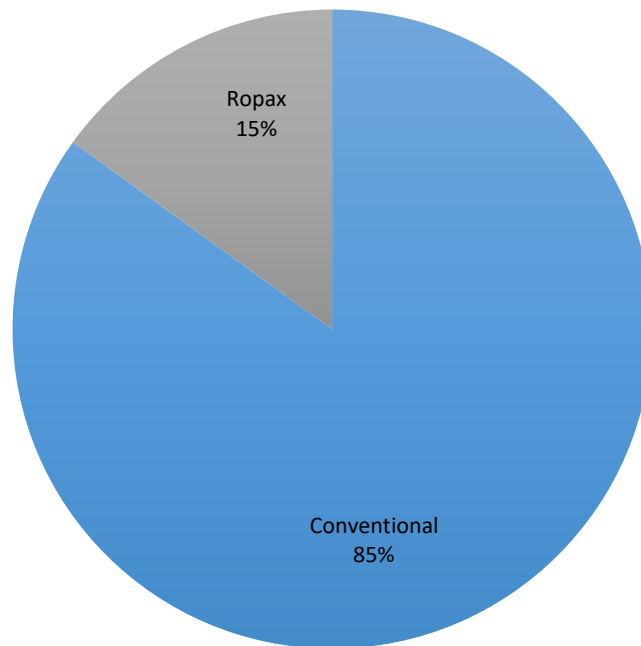
CARGO Ship Operations



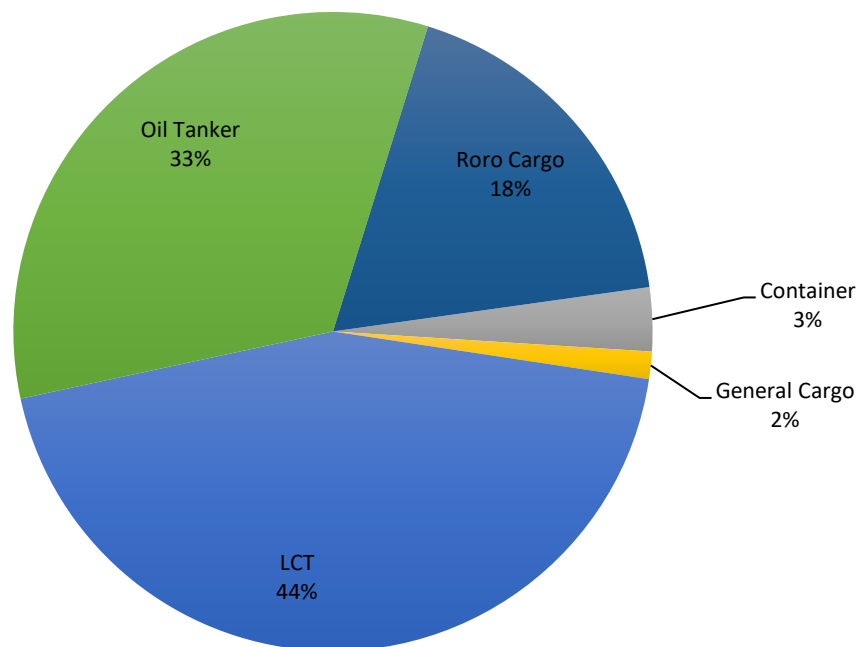
PASSENGER and CARGO Ship Operations



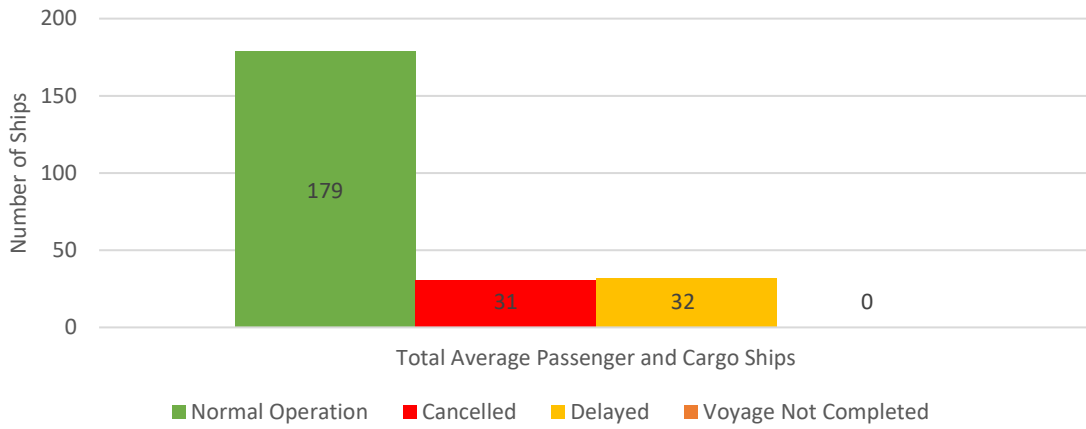
Passenger Ship Types under Normal Operations



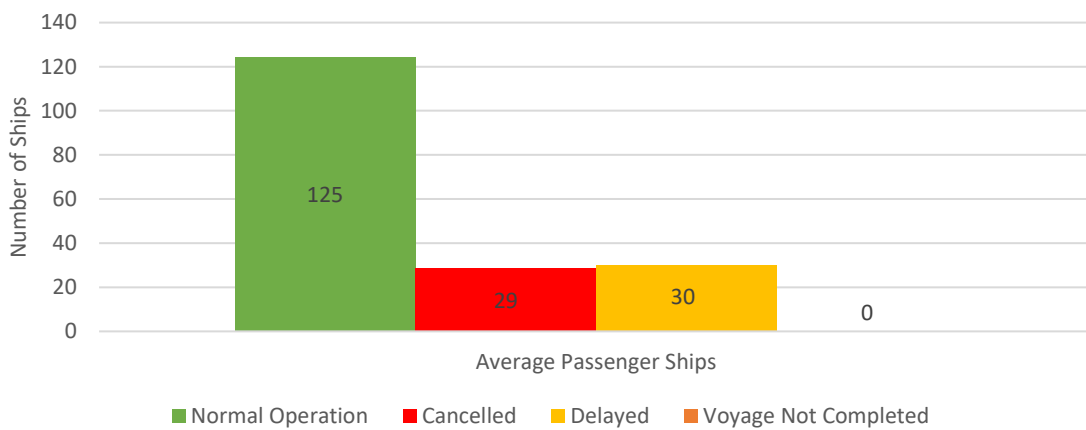
Cargo Ship Types under Normal Operations



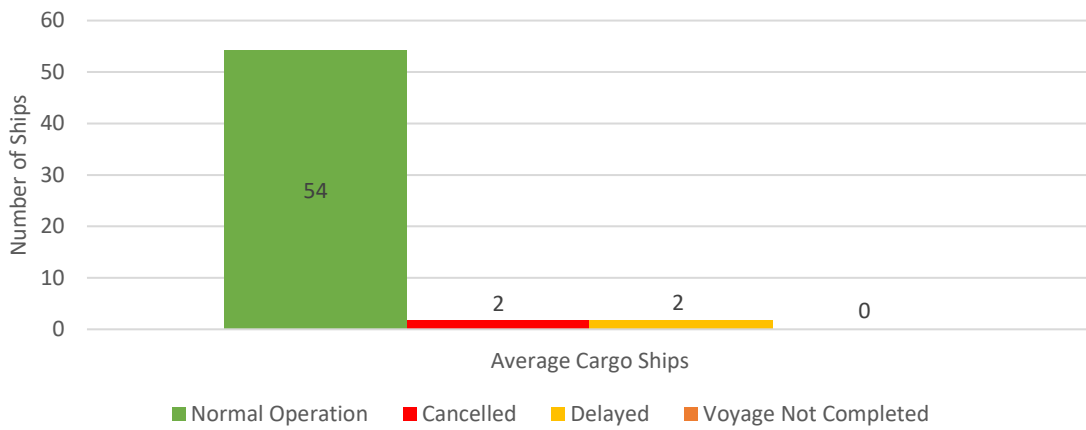
Daily Average Passenger and Cargo Ship Operation



Daily Average Passenger Ship Operation



Daily Average Cargo Ship Operation



WEEKLY STATUS OF SHIPPING OPERATIONS

20 March to 06 August 2020

■ Total number of ships per week (passenger and cargo)
— Total number of passenger ships per week
— Total number of cargo ships per week

