



MARITIME INDUSTRY AUTHORITY WEEKLY SUMMARY SITUATION REPORT – 21

Passenger and Cargo Shipping Operations on August 07 to 13, 2020
in areas under MECQ, MGCQ, and GCQ

Data generated on August 07 to 13, 2020, 3:00 PM

HIGHLIGHTS

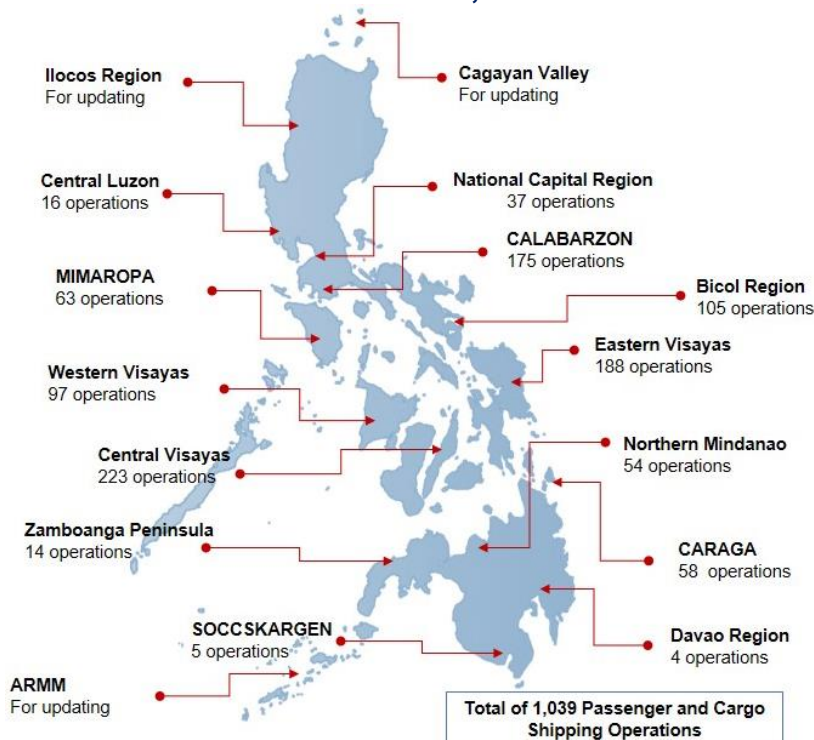
- Eighty percent (80%) of passenger and cargo shipping operations were completed in accordance with the ships' CPC.
- Twenty percent (20%) of the shipping operations were affected due to the measures implemented in view Code Red Sublevel 2 for the COVID-19.
- Operations of passenger ships were more affected compared to cargo ships. 96% of the cargo shipping operations were completed under normal conditions compared to passenger ships at 76%.
- Daily average passenger and cargo ship operations are 208 completed under normal conditions, 24 cancelled trips, 28 delayed and 0 not completed voyage.
- **With cargo shipping still operational, transport of goods amid MECQ, MGCQ, and GCQ is assured.**

PASSENGER AND CARGO SHIPPING IN NUMBERS

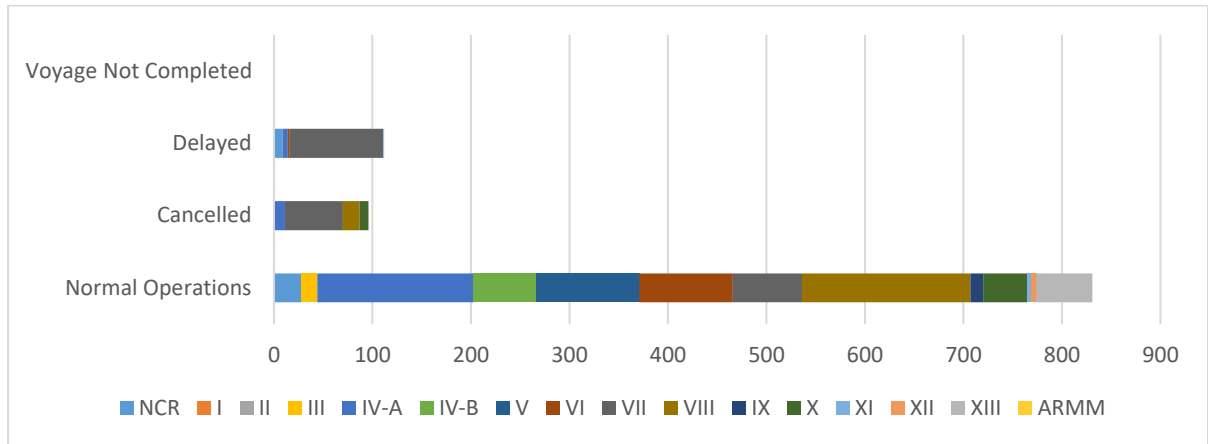
August 07 to 13, 2020

- 1039** Shipping Operations Recorded
- 826** Passenger Ships Operated
- 213** Cargo Ships Operated
- 831** Ships Operated Normally
- 96** Operations Cancelled
- 112** Operations Delayed
- 0** Operation Uncompleted

PASSENGER AND CARGO SHIPPING OPERATIONS IN THE PHILIPPINES IN AREAS UNDER MECQ, MGCQ and GCQ



I. STATUS OF SHIPPING OPERATIONS NATIONWIDE



On August 07 to 13, 2020, there were 1039 passenger and cargo shipping operations conducted wherein 831 or 80% were completed in accordance with their Certificate of Public Convenience (CPC).

Out of the 831 operations completed under normal conditions, the reported movements were mostly in the Eastern Visayas Region at 21% and Calabarzon Region at 19%.

Meanwhile, 9% of the passenger and cargo shipping operations were cancelled, all due to the community quarantine measures imposed by the different local government units governing the ships' ports of destination. Mostly affected were operations in the Central Visayas and Eastern Visayas Regions.

One hundred-eight (108) passenger ships or 13% encountered delays due to the additional measures adopted in view of COVID-19 such as temperature screening and inspections.

Lastly, there are no uncompleted shipping operations at the time of reporting.

II. STATUS OF SHIPPING OPERATIONS BY CLASSIFICATION

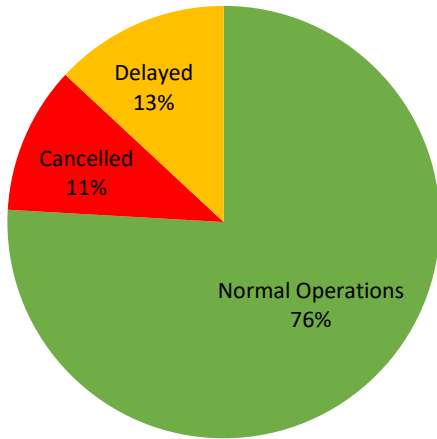
Region	Normal Operations		Cancelled		Delayed		Not Completed	
	Passenger	Cargo	Passenger	Cargo	Passenger	Cargo	Passenger	Cargo
NCR	4	24	0	0	6	3	0	0
I	0	0	0	0	0	0	0	0
II	0	0	0	0	0	0	0	0
III	0	16	0	0	0	0	0	0
IV-A	144	15	11	0	5	0	0	0
IV-B	51	12	0	0	0	0	0	0
V	99	6	0	0	0	0	0	0
VI	66	29	0	0	2	0	0	0
VII	8	62	54	5	94	0	0	0
VIII	155	16	17	0	0	0	0	0
IX	3	10	0	0	0	1	0	0
X	40	5	9	0	0	0	0	0
XI	0	4	0	0	0	0	0	0
XII	0	5	0	0	0	0	0	0
XIII	57	0	0	0	1	0	0	0
ARMM	0	0	0	0	0	0	0	0
Total	627	204	91	5	108	4	0	0

Amid the measures in place due to MECQ, MGCQ, and GCQ, 204 out of 213 (96%) cargo ships still operated normally – are 10 container ships, 5 general cargo ships, 74 LCT ships, 86 oil tankers, and 29 Roro cargo ships.

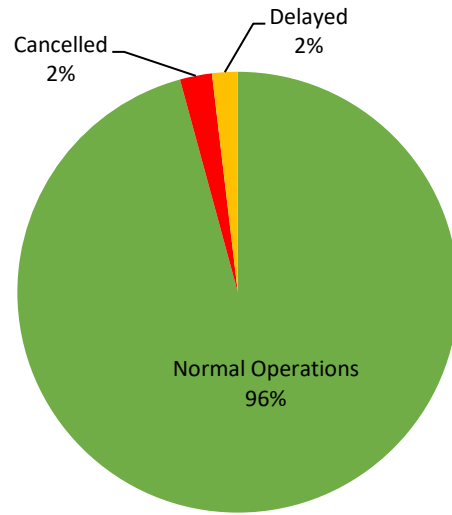
Six hundred twenty-seven (627) passenger ships completed their voyage – 524 conventional passenger ships, 102 RoPax ships and 1 fast craft ferry completed their operations but mostly only carried cargoes during their voyage.

Meanwhile out of the 826 passenger ships, 24% were affected by the measures adopted in view of COVID-19. These measures caused either the cancellation, delay, or uncompleted operations of 199 passenger ships.

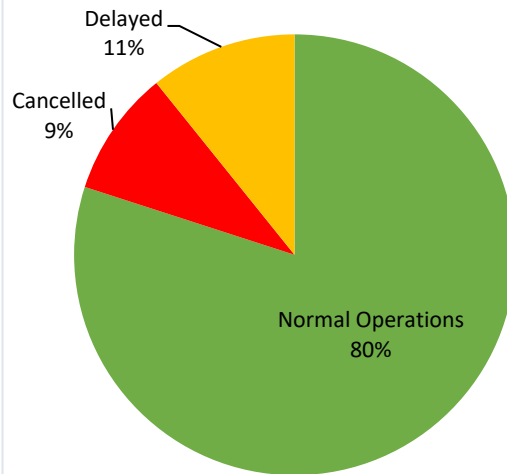
PASSENGER Ship Operations



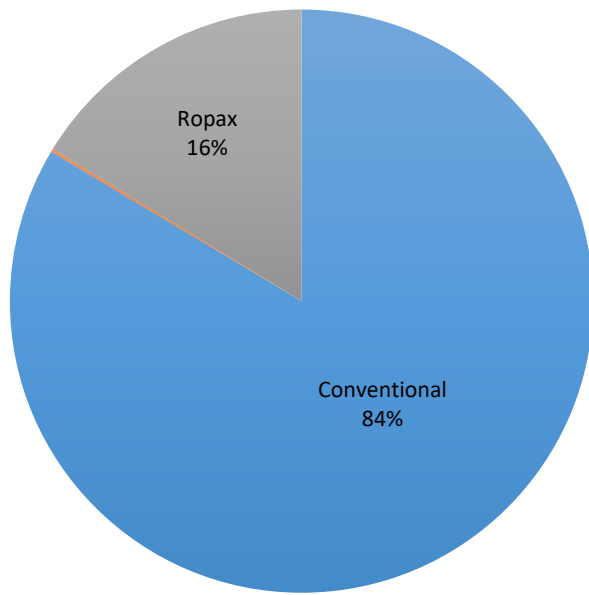
CARGO Ship Operations



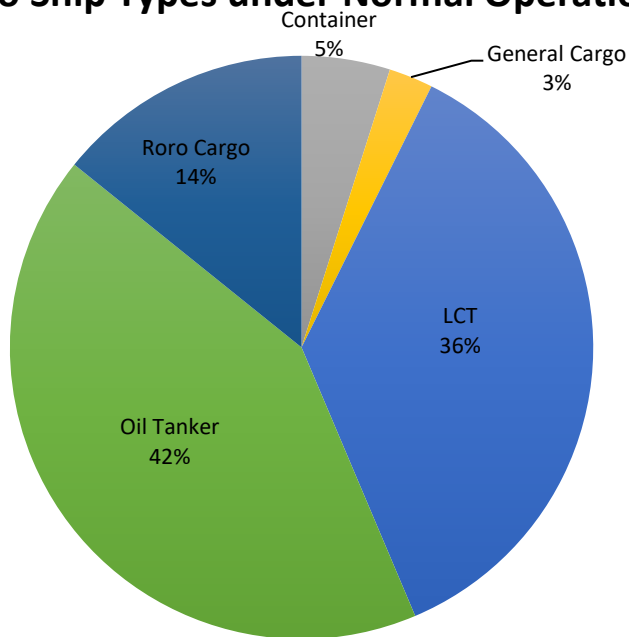
PASSENGER and CARGO Ship Operations

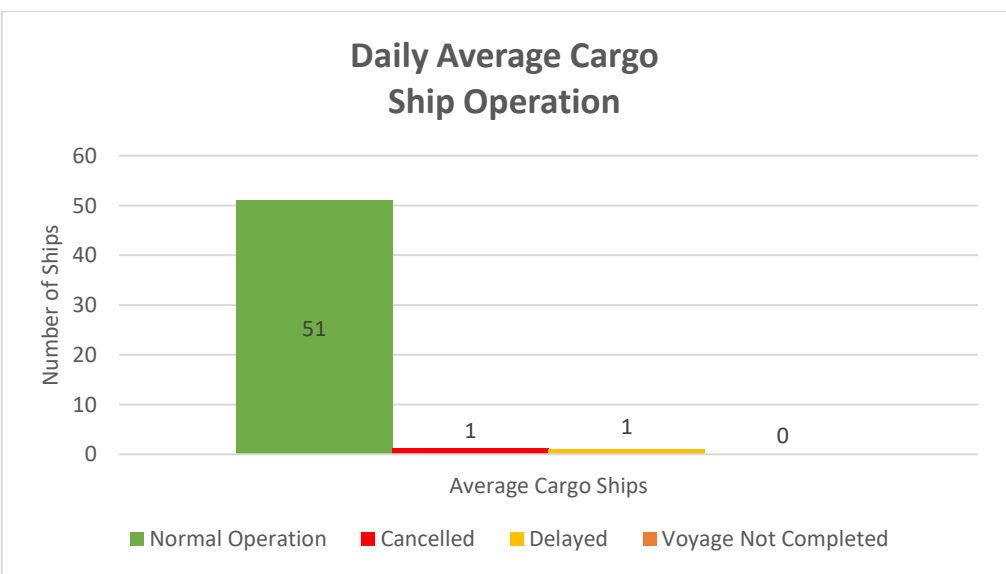
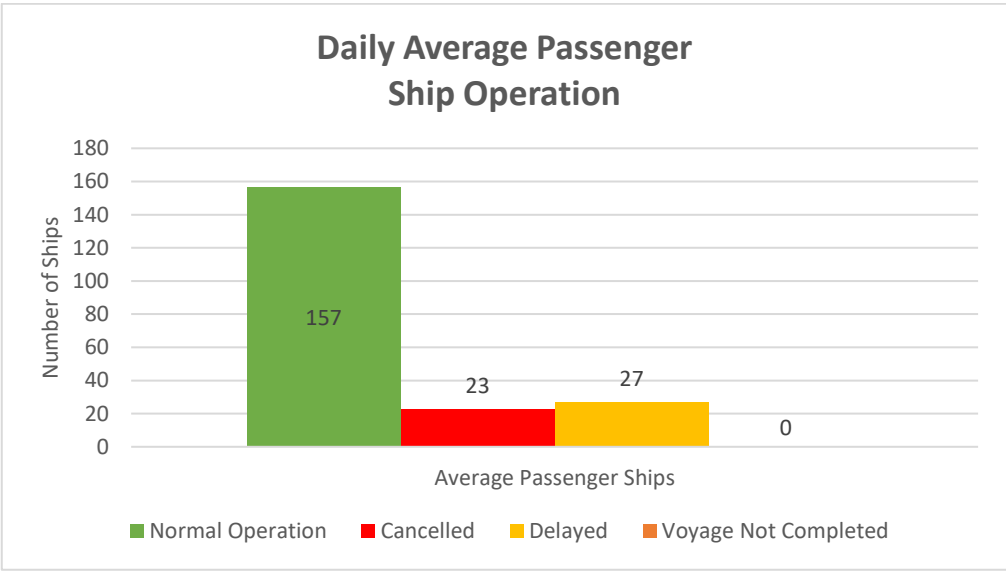
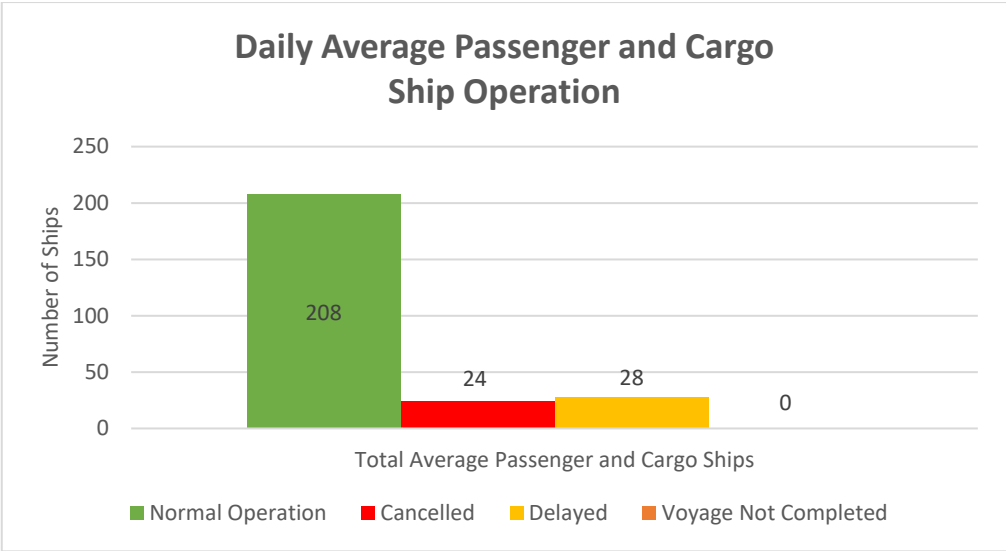


Passenger Ship Types under Normal Operations



Cargo Ship Types under Normal Operations





WEEKLY STATUS OF SHIPPING OPERATIONS

20 March to 13 August 2020

■ Total number of ships per week (passenger and cargo)
— Total number of passenger ships per week
— Total number of cargo ships per week

