



MARITIME INDUSTRY AUTHORITY WEEKLY SUMMARY SITUATION REPORT – 22

Passenger and Cargo Shipping Operations on August 14 to 20, 2020
in areas under MGCQ and GCQ

Data generated on August 14 to 20, 2020, 3:00 PM

HIGHLIGHTS

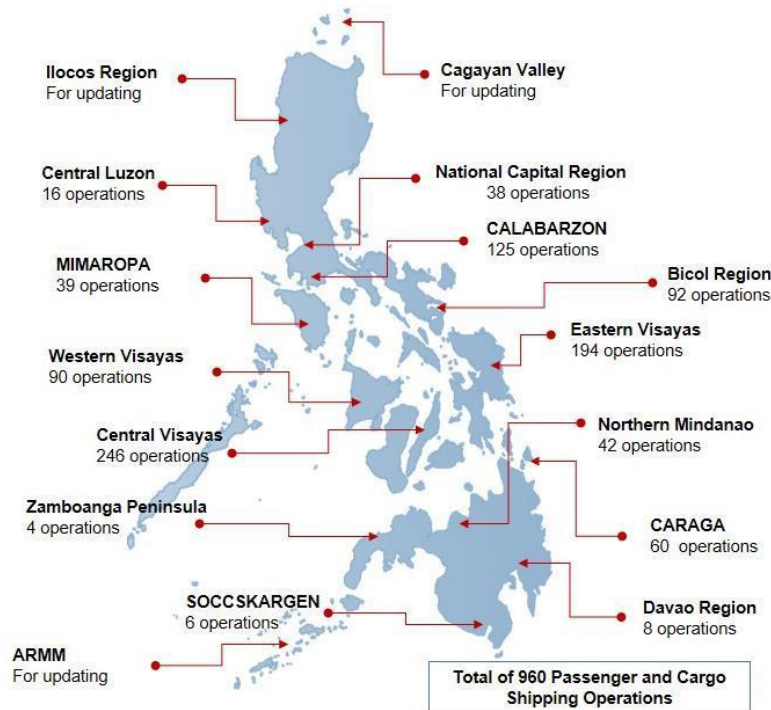
- Seventy-two percent (72%) of passenger and cargo shipping operations were completed in accordance with the ships' CPC.
- Twenty-eight percent (28%) of the shipping operations were affected due to the measures implemented in view Code Red Sublevel 2 for the COVID-19.
- Operations of passenger ships were more affected compared to cargo ships. 96% of the cargo shipping operations were completed under normal conditions compared to passenger ships at 68%.
- Daily average passenger and cargo ship operations are 173 completed under normal conditions, 39 cancelled trips, 28 delayed and 1 not completed voyage.
- **With cargo shipping still operational, transport of goods amid MGCQ and GCQ is assured.**

PASSENGER AND CARGO SHIPPING IN NUMBERS

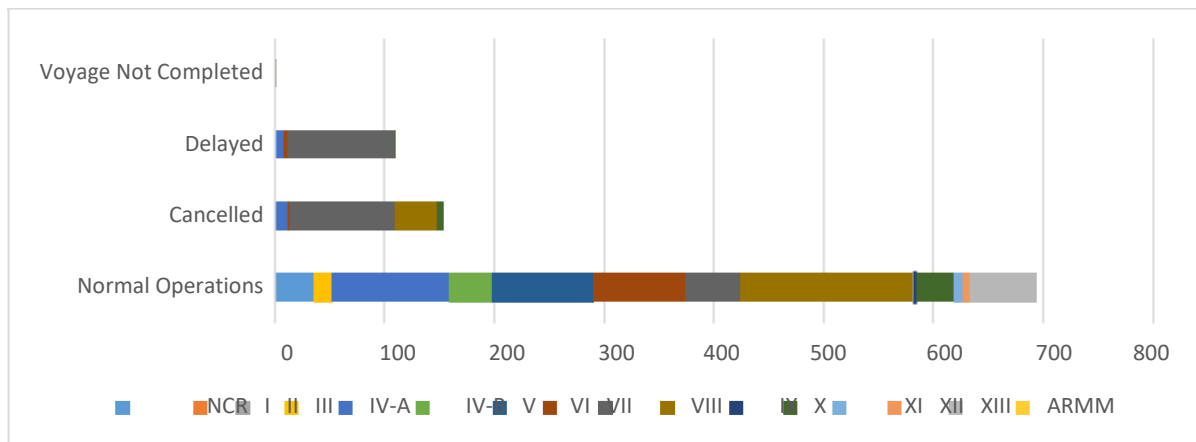
August 14 to 20, 2020

- 960** Shipping Operations Recorded
- 811** Passenger Ships Operated
- 149** Cargo Ships Operated
- 693** Ships Operated Normally
- 154** Operations Cancelled
- 111** Operations Delayed
- 2** Operation Uncompleted

PASSENGER AND CARGO SHIPPING OPERATIONS IN THE PHILIPPINES IN AREAS UNDER MGCQ and GCQ



I. STATUS OF SHIPPING OPERATIONS NATIONWIDE



On August 14 to 20, 2020, there were 960 passenger and cargo shipping operations conducted wherein 693 or 72% were completed in accordance with their Certificate of Public Convenience (CPC).

Out of the 693 operations completed under normal conditions, the reported movements were mostly in the Eastern Visayas Region at 23% and Calabarzon Region at 15%.

Meanwhile, 16% of the passenger and cargo shipping operations were cancelled, all due to the community quarantine measures imposed by the different local government units governing the ships' ports of destination. Mostly affected were operations in the Central Visayas and Eastern Visayas Regions.

One hundred and eleven (111) passenger ships or 14% encountered delays due to the additional measures adopted in view of COVID-19 such as temperature screening and inspections.

Lastly, only two (2) passenger and no cargo shipping operations were not completed at the time of reporting, as the respective ships were still underway.

II. STATUS OF SHIPPING OPERATIONS BY CLASSIFICATION

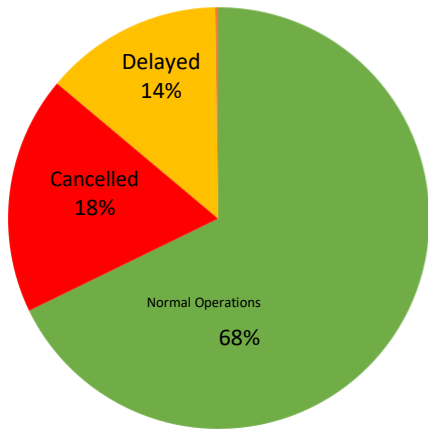
Region	Normal Operations		Cancelled		Delayed		Not Completed	
	Passenger	Cargo	Passenger	Cargo	Passenger	Cargo	Passenger	Cargo
NCR	11	25	0	0	2	0	0	0
I	0	0	0	0	0	0	0	0
II	0	0	0	0	0	0	0	0
III	0	16	0	0	0	0	0	0
IV-A	102	5	12	0	6	0	0	0
IV-B	36	3	0	0	0	0	0	0
V	87	5	0	0	0	0	0	0
VI	62	22	2	0	4	0	0	0
VII	7	44	90	6	98	0	1	0
VIII	156	0	38	0	0	0	0	0
IX	0	4	0	0	0	0	0	0
X	29	5	6	0	1	0	1	0
XI	0	8	0	0	0	0	0	0
XII	0	6	0	0	0	0	0	0
XIII	60	0	0	0	0	0	0	0
ARMM	0	0	0	0	0	0	0	0
Total	550	143	148	6	111	0	2	0

Amid the measures in place due to MGCQ, and GCQ, 143 out of 149 (96%) cargo ships still operated normally – are 11 container ships, 4 general cargo ships, 36 LCT ships, 64 oil tankers and 28 Roro cargo ships.

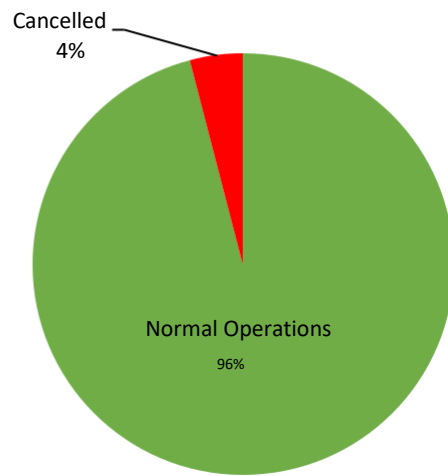
Five hundred fifty (550) passenger ships completed their voyage – 462 conventional passenger ships and 88 RoPax ships completed their operations but mostly only carried cargoes during their voyage.

Meanwhile out of the 811 passenger ships, 32% were affected by the measures adopted in view of COVID-19. These measures caused either the cancellation, delay, or uncompleted operations of 261 passenger ships.

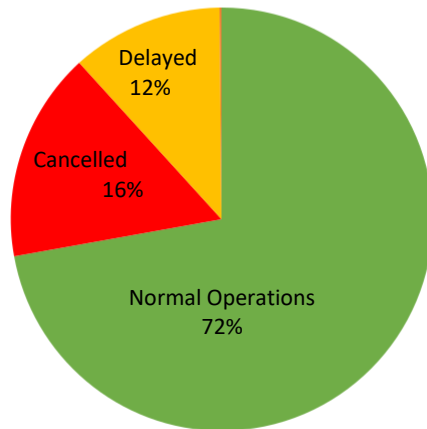
PASSENGER Ship Operations



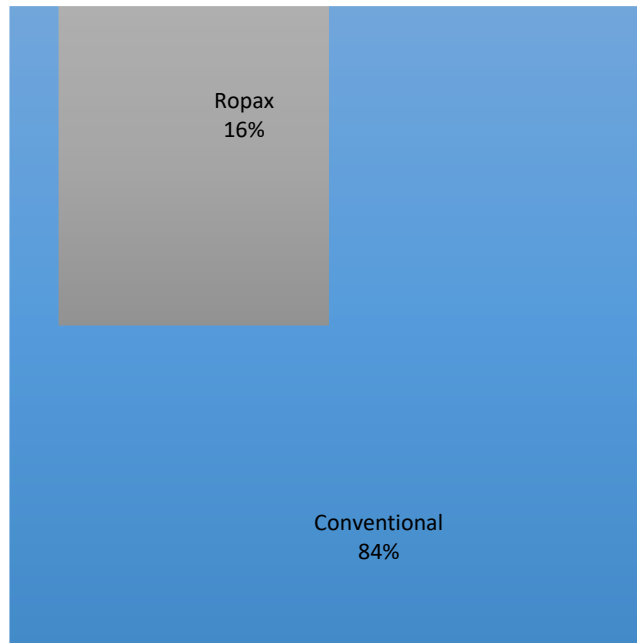
CARGO Ship Operations



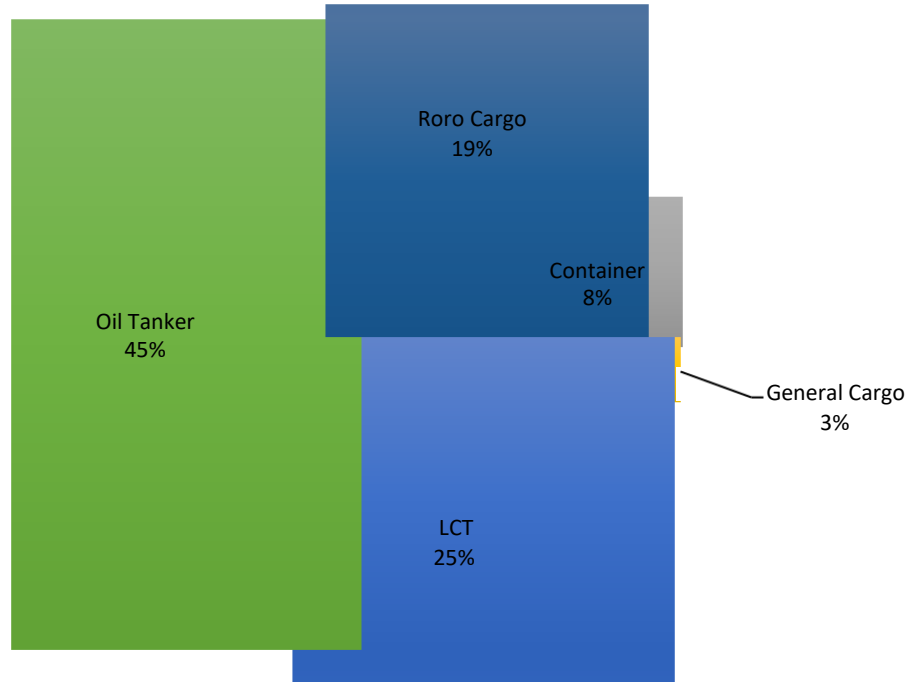
PASSENGER and CARGO Ship Operations



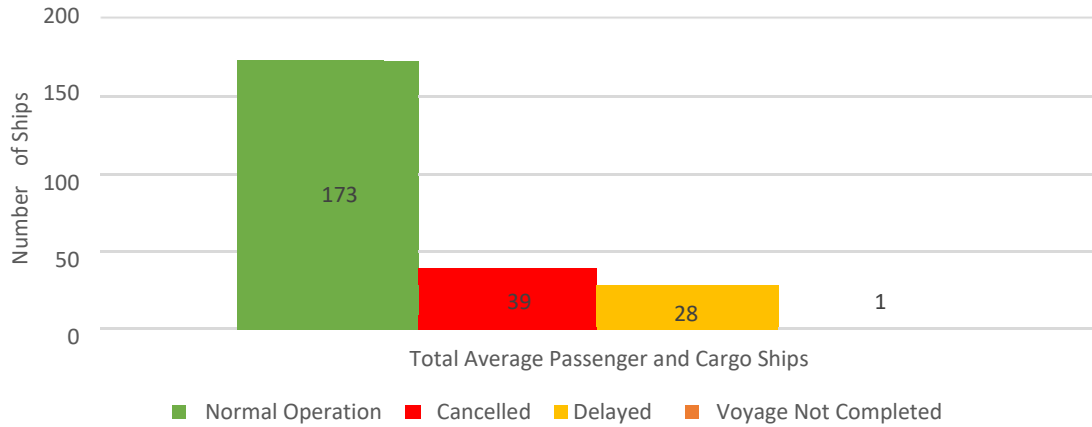
Passenger Ship Types under Normal Operations



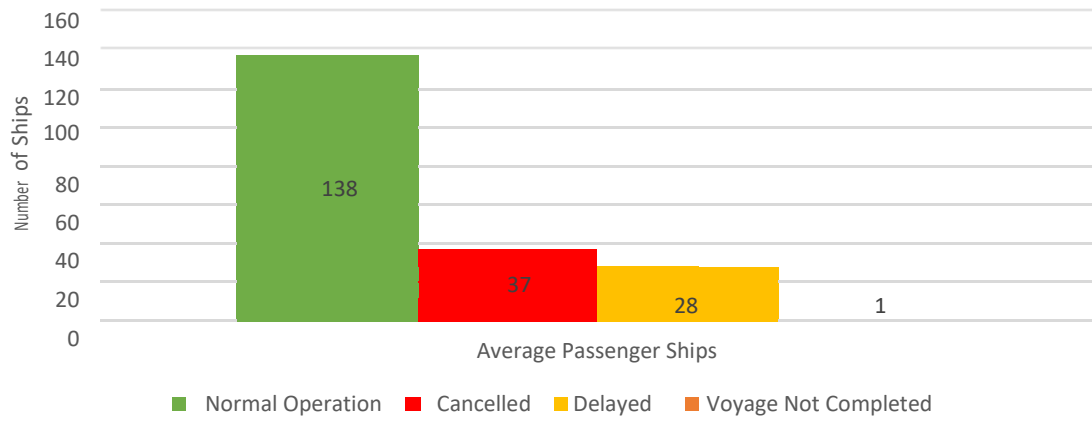
Cargo Ship Types under Normal Operations



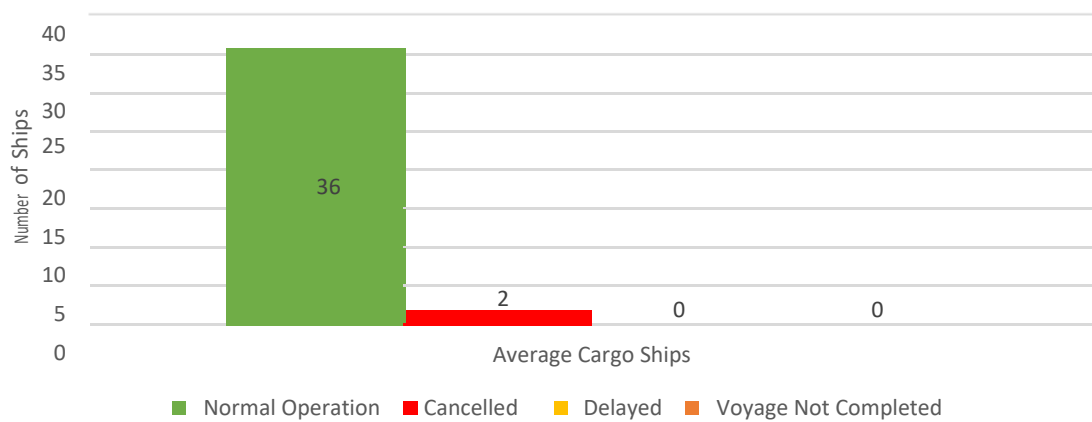
Daily Average Passenger and Cargo Ship Operation



Daily Average Passenger Ship Operation



Daily Average Cargo Ship Operation



WEEKLY STATUS OF SHIPPING OPERATIONS

20 March to 20 August 2020

