



MARITIME INDUSTRY AUTHORITY WEEKLY SUMMARY SITUATION REPORT – Summary 23

Passenger and Cargo Shipping Operations on August 21 to 27, 2020
in areas under MGCQ and GCQ

Data generated on August 21 to 27, 2020, 3:00 PM

HIGHLIGHTS

- Seventy-two percent (72%) of passenger and cargo shipping operations were completed in accordance with the ships' CPC.
- Twenty-eight percent (28%) of the shipping operations were affected due to the measures implemented in view Code Red Sublevel 2 for the COVID-19.
- Operations of passenger ships were more affected compared to cargo ships. 95% of the cargo shipping operations were completed under normal conditions compared to passenger ships at 65%.
- Daily average passenger and cargo ship operations are 158 completed under normal conditions, 36 cancelled trips, 26 delayed and 0 not completed voyage.
- With cargo shipping still operational, transport of goods amid MGCQ, and GCQ is assured.**

PASSENGER AND CARGO SHIPPING IN NUMBERS

August 21 to 27, 2020

880 Shipping Operations Recorded

673 Passenger Ships Operated

207 Cargo Ships Operated

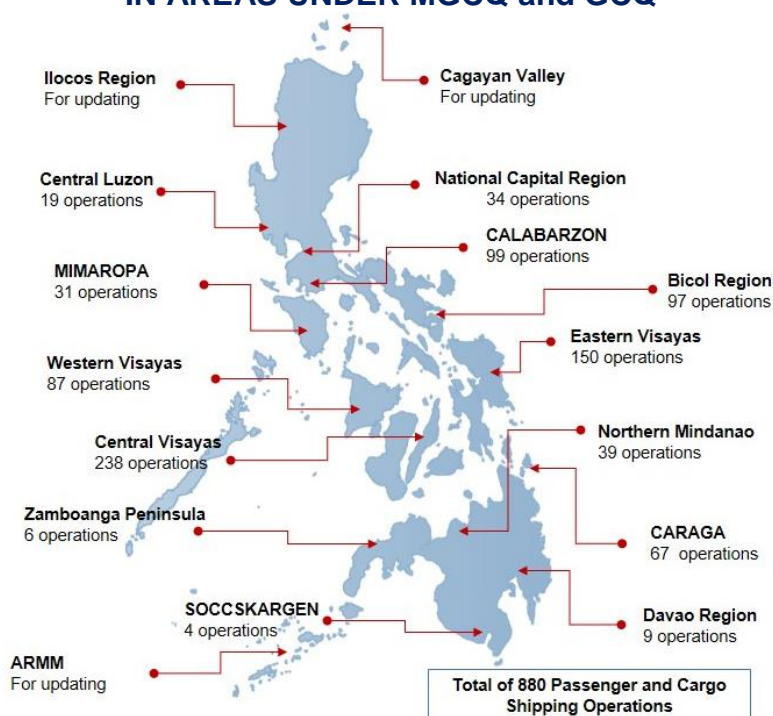
631 Ships Operated Normally

145 Operations Cancelled

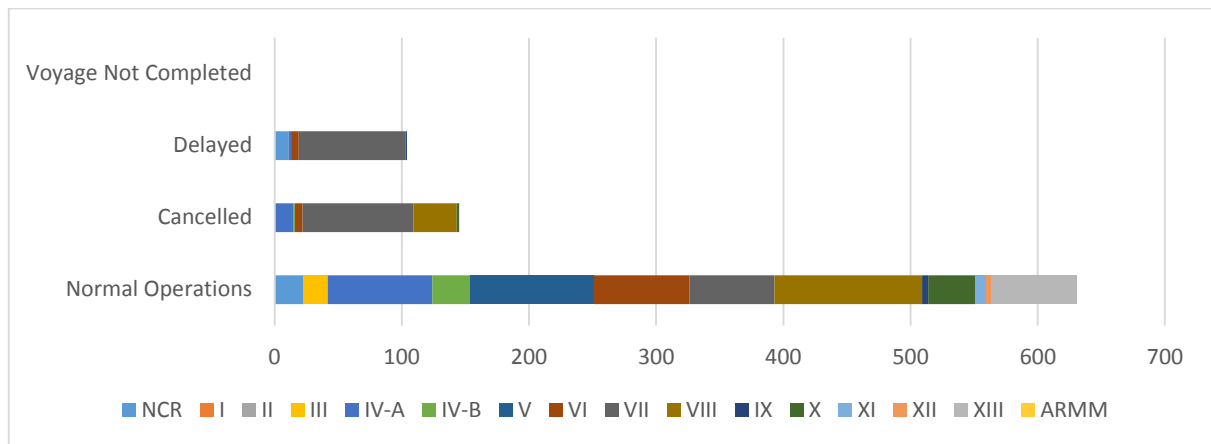
104 Operations Delayed

0 Operation Uncompleted

PASSENGER AND CARGO SHIPPING OPERATIONS IN THE PHILIPPINES IN AREAS UNDER MGCQ and GCQ



I. STATUS OF SHIPPING OPERATIONS NATIONWIDE



On August 21 to 27, 2020, there were 880 passenger and cargo shipping operations conducted wherein 631 or 72% were completed in accordance with their Certificate of Public Convenience (CPC).

Out of the 631 operations completed under normal conditions, the reported movements were mostly in the Eastern Visayas Region at 18% and Central Visayas Region at 15%.

Meanwhile, 16% of the passenger and cargo shipping operations were cancelled, all due to the community quarantine measures imposed by the different local government units governing the ships' ports of destination. Mostly affected were operations in the Central Visayas and Eastern Visayas Regions.

Ninety-eight (98) passenger ships or 14% encountered delays due to the additional measures adopted in view of COVID-19 such as temperature screening and inspections.

Lastly, no passenger and cargo shipping operation was not completed at the time of reporting.

II. STATUS OF SHIPPING OPERATIONS BY CLASSIFICATION

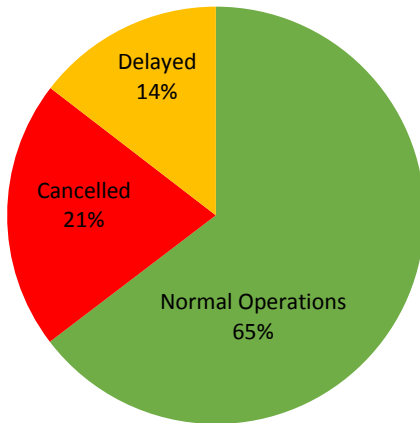
Region	Normal Operations		Cancelled		Delayed		Not Completed	
	Passenger	Cargo	Passenger	Cargo	Passenger	Cargo	Passenger	Cargo
NCR	8	15	0	0	5	6	0	0
I	0	0	0	0	0	0	0	0
II	0	0	0	0	0	0	0	0
III	0	19	0	0	0	0	0	0
IV-A	74	8	15	0	2	0	0	0
IV-B	28	2	1	0	0	0	0	0
V	88	9	0	0	0	0	0	0
VI	56	19	6	0	6	0	0	0
VII	0	67	82	5	84	0	0	0
VIII	81	35	34	0	0	0	0	0
IX	1	4	0	0	1	0	0	0
X	32	5	2	0	0	0	0	0
XI	0	9	0	0	0	0	0	0
XII	0	4	0	0	0	0	0	0
XIII	67	0	0	0	0	0	0	0
ARMM	0	0	0	0	0	0	0	0
Total	435	196	140	5	98	6	0	0

Amid the measures in place due to MGCQ, and GCQ, 196 out of 207 (95%) cargo ships still operated normally – are 1 chemical tanker, 7 container ships, 2 general cargo ships, 108 LCT ships, 62 oil tankers and 16 Roro cargo ships.

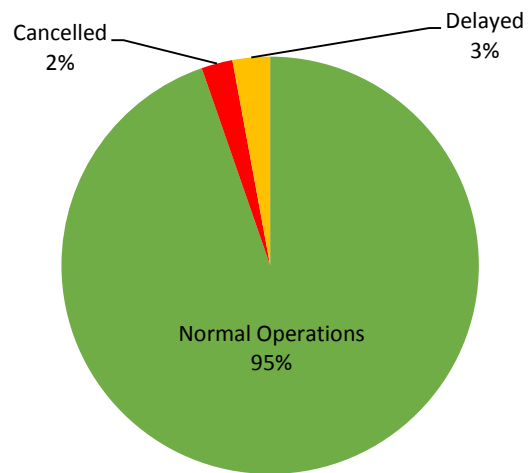
Four hundred and thirty-five (435) passenger ships completed their voyage – 366 conventional passenger ships and 69 RoPax ships completed their operations but mostly only carried cargoes during their voyage.

Meanwhile out of the 673 passenger ships, 35% were affected by the measures adopted in view of COVID-19. These measures caused either the cancellation, delay, or uncompleted operations of 238 passenger ships.

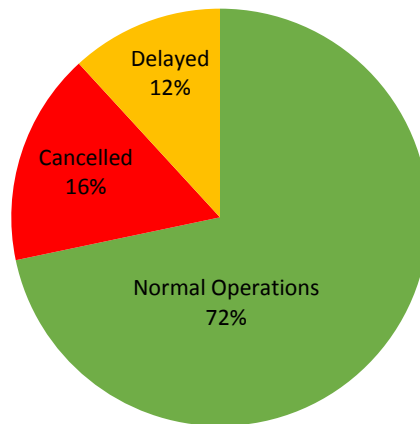
PASSENGER Ship Operations



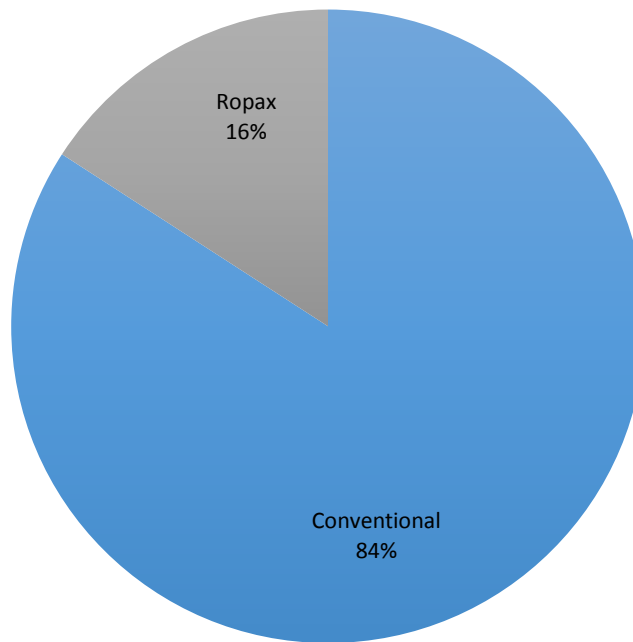
CARGO Ship Operations



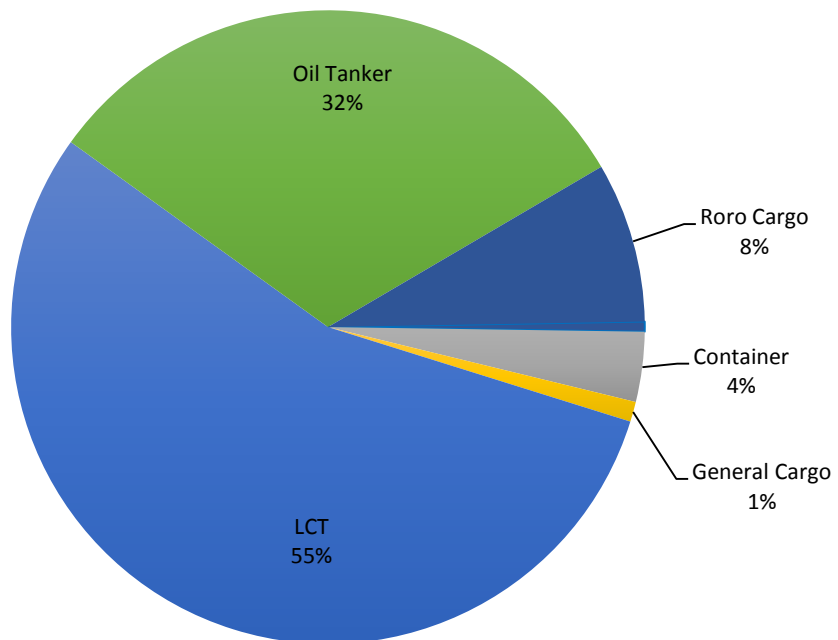
PASSENGER and CARGO Ship Operations

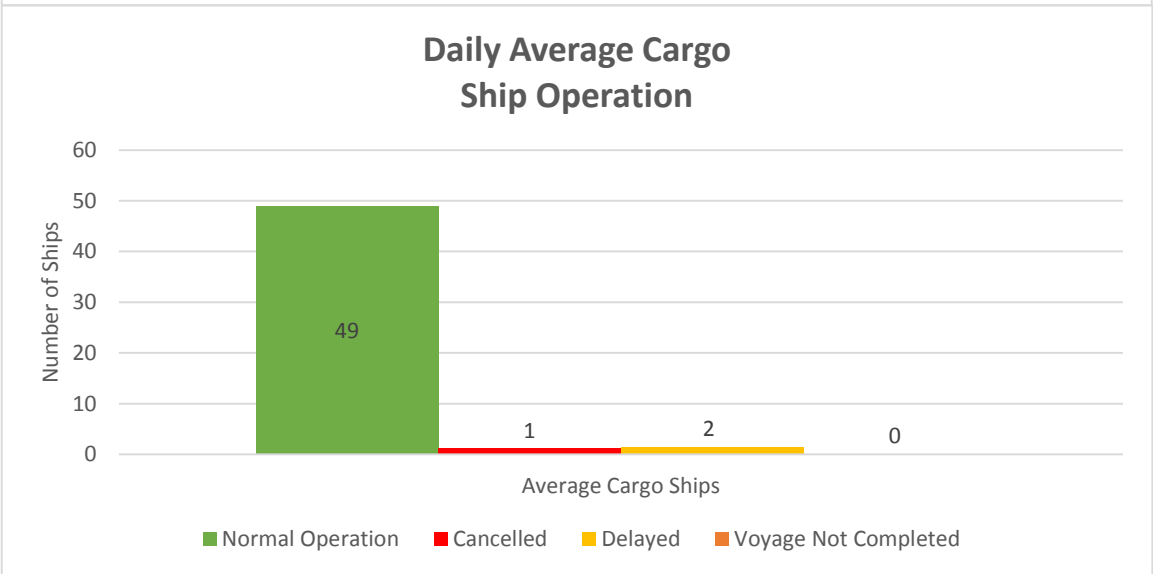
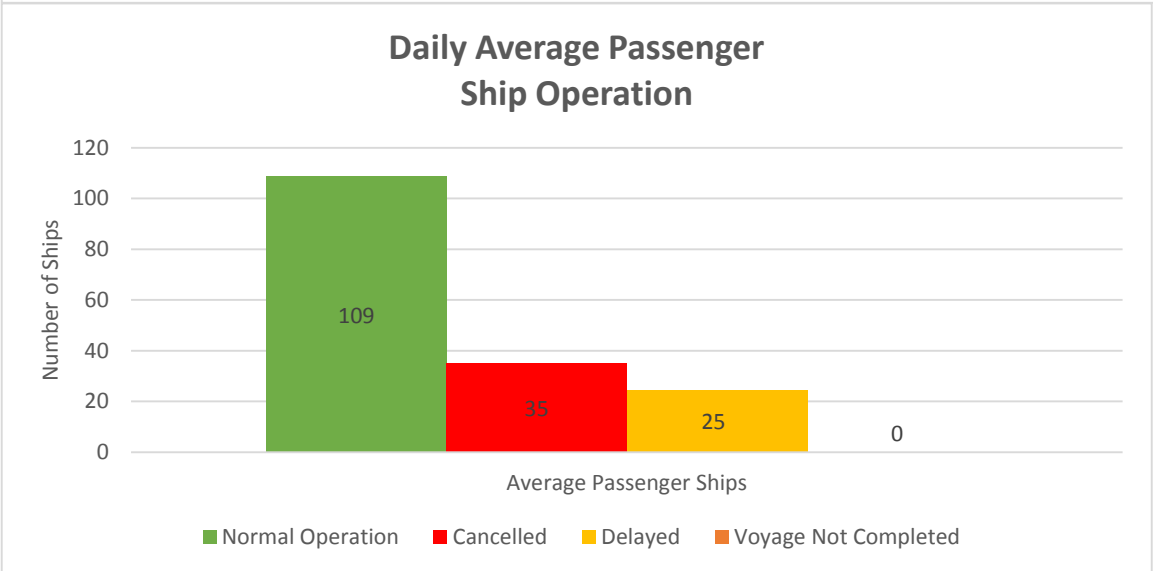
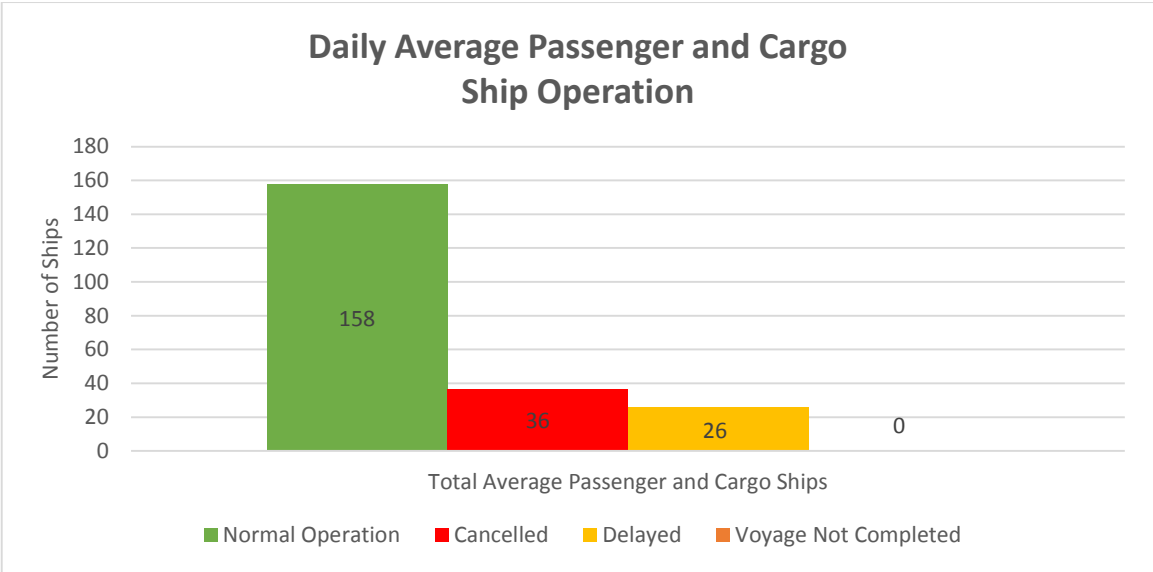


Passenger Ship Types under Normal Operations



Cargo Ship Types under Normal Operations





WEEKLY STATUS OF SHIPPING OPERATIONS

20 March to 27 August 2020

