

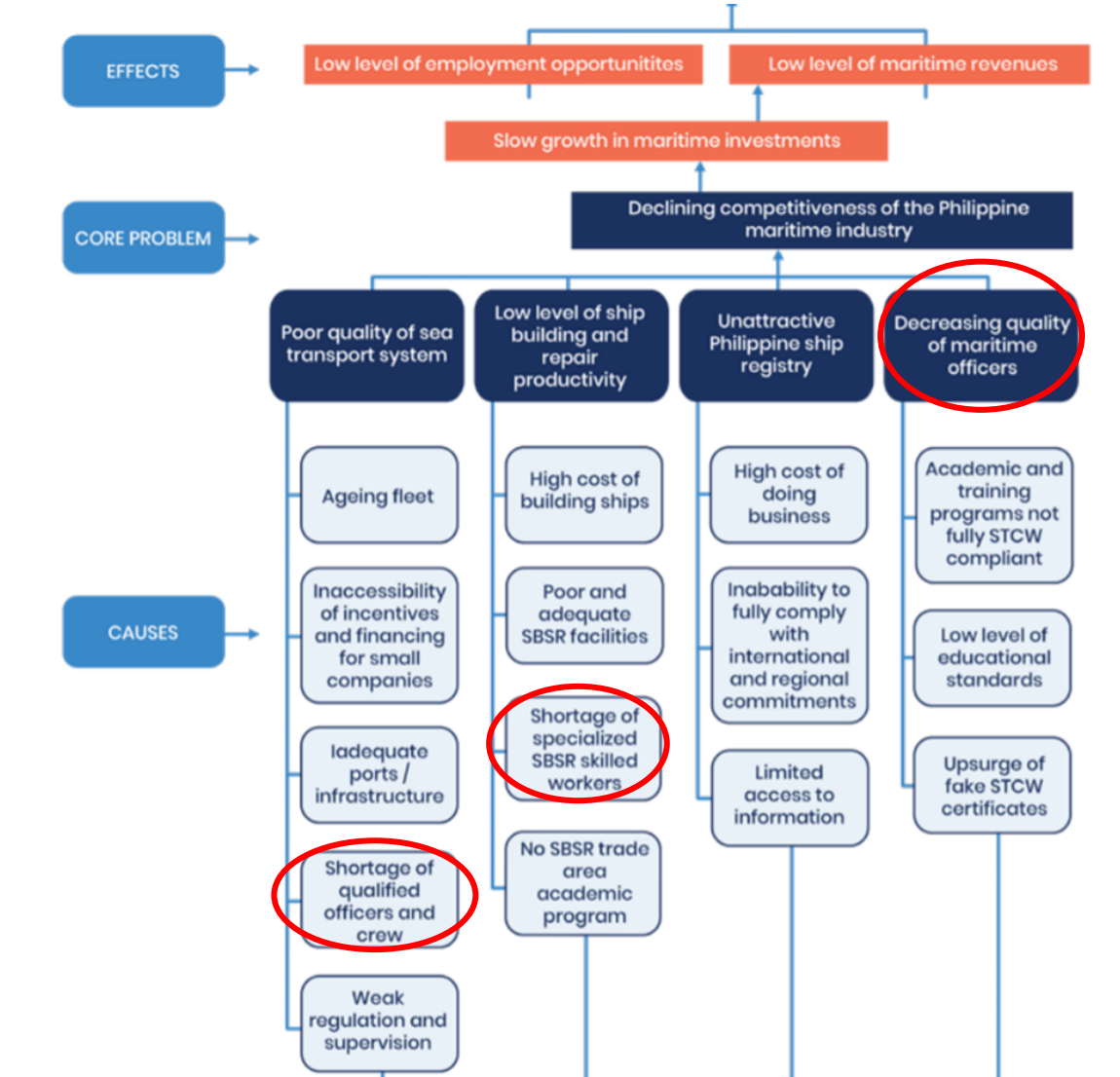


ALMA Maritime Group

MARITIME INDUSTRY SYMPOSIUM Sept. 24, 2020

**Initiatives, Innovations and Investment:
MARITIME MANPOWER DEVELOPMENT**

PROBLEM TREE FOR THE MARITIME INDUSTRY



Reference: Maritime Industry Development Plan



Figure 2. Priority Programs under the Ten-Year Maritime Industry Development Plan (MIDP)

Suggested Technical-Vocational-Livelihood Maritime Specialization Scheduling of Subjects

	Grade 11		Grade 12	
	1 st Semester	2 nd Semester	1 st Semester	2 nd Semester
Core Subjects	Oral Communication	21 st Literature from the Philippines and the World	Contemporary Philippine Arts from the Regions	
	Reading and Writing	Pagbasa at Pagsusuri ng Iba't Ibang Teksto Tungo sa Pananaliksik	Komunikasyon at Pananaliksik sa Wika at Kulturang Filipino	
	General Mathematics	Statistics and Probability	Media and Information Literacy	
	Personal Development/Pansariling Kaunlaran	Earth and Life Science	Physical Science	
	Introduction to Philosophy of the Human Person		Understanding Culture, Society and Politics	
	Physical Education and Health	Physical Education and Health	Physical Education and Health	Physical Education and Health
Applied Track Subjects	English for Academic Purposes	Practical Research 1 Filipino sa Piling Larangan (Tech-Voc)	Practical Research 2	Entrepreneurship
				Empowerment Technologies
				Inquiries, Investigations, and Immersions
Specialized Track Subjects	Navigational Watch 1 Safety 1	Navigational Watch 2 Engine Watch 1	Navigational Watch 3 Engine Watch 2	Ship's Catering Services NC I Safety 2
				Work Immersion Research/Career Advocacy/Culminating Activity
Hours per Day	6.6	6.6	6.6	5.0

Please note that **Navigational Watch 1** and **Safety 1** are **co-requisites**.

There are also some subjects that have prerequisites. These are indicated in the Curriculum Guides and are listed below for easy referral.

SUBJECT	PREREQUISITE/S
Practical Research 2	Statistics and Probability
Navigational Watch 2	Navigational Watch 1 and Safety 1
Engine Watch 1	Safety 1
Navigational Watch 3	Navigational Watch 2
Engine Watch 2	Engine Watch 1
Safety 2	Engine Watch 2

MARITIME TECHNICAL- VOCATIONAL TRACK

geared towards developing students to become crew members in the maritime and shipping industries, with specialization in engine, deck and catering



2017 Global Supply and Demand

Reference: International Chamber of Shipping

Supply: 1,647,500

Officers: 774,000

Ratings: 873,500

Demand: 1,545,000

Officers: 790,500

Ratings: 754,500

SHORTAGE OF 16,500 OFFICERS

SURPLUS OF 119,000 RATINGS



ALMA Maritime Group



SY 2015-2016	MALE	FEMALE	TOTAL
BS MAR-E	94,937	1,166	96,103
BS MT	124,805	3,615	128,420

YEAR	NUMBER OF SEAFARERS (POEA DATA)
2007	266,553
2008	261,614
2009	330,424
2010	347,150
2011	369,104
2012	366,865
2013	367,166
2014	401,826
2015	406,531
2016	442,820
2017	378,072

Reference: POEA and MARINA



CONVERT the surplus of ratings

REINSTATE the displaced crew

DEVELOP the new graduates

ENHANCE the current pool



THANK YOU



ALMA Maritime Group