


# **“Working Together as One for Sustainable Maritime Philippines”**

**MARITIME INDUSTRY SYMPOSIUM**

**23-25 September 2020**

**Via Zoom with Live Streaming**

***The MMDA Pasig River Ferry Service under  
the COVID-19 Pandemic and Beyond***



**Our warm congratulations to the Maritime Industry Authority (MARINA) as it spearheads the celebration of the National Maritime Week 2020 with this maritime industry symposium with the theme – Sustainable Shipping for a Sustainable Planet**

**JOB WELL DONE**

# OBJECTIVES OF THE PASIG RIVER FERRY SERVICE

- ❖ Serves as an alternative mode of transport to help ease road traffic congestion in Metro Manila
- ❖ Serves as a lifeline during disasters and calamities especially with the possible 7.2 magnitude earthquake in Metro Manila that could bring down bridges and roads impassable

# PASIG RIVER FERRY CONVERGENCE PROGRAM

- A multi-sectoral approach in the development of the Pasig River Ferry System within the Pasig-Marikina River System and subsequently along the Laguna Lake and Manila Bay Areas
- Member-agencies include DENR, DPWH, DOTr, (PCG & MARINA), DILG, DOT, LLDA, NEDA, DBM and MMDA



# OPERATING SCHEDULE

*Monday to Saturday*

6:00 am to 6:00 pm

# FERRY STATIONS

## FROM LAGUNA LAKE TO MANILA BAY

1. Pinagbuhatan
2. San Joaquin
3. Maybunga (Marikina River)
4. Guadalupe
5. Hulo
6. Valenzuela
7. Lambingan
8. Sta. Ana
9. PUP
10. Lawton
11. Escolta

# BOAT FLEET

The PRFS has a fleet composed of eleven (11) passenger ferry boats

**Seating capacity:**

2 - 57 seater

3 - 55 seater

4 - 36 seater

2 - 16 seater



**M/B MUTYA NG PASIG 2**



**M/B SOLEDAD**



**M/B ORETA**



**M/B PHILECO**



# SAFETY PROTOCOLS

- \* regular body temperature checks



- \* **sanitizing stations**
- \* **installation of visual cues to observe physical distancing inside the terminals and vessels**



- \* **boat crew wears complete and proper PPEs.**





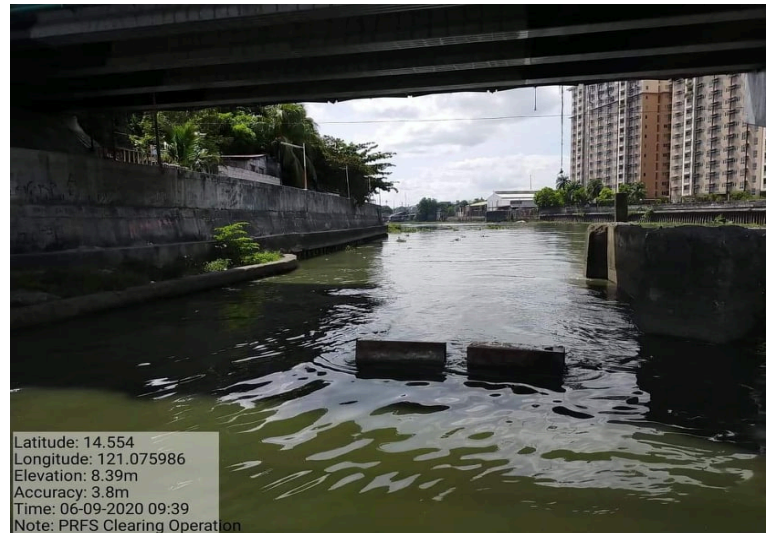
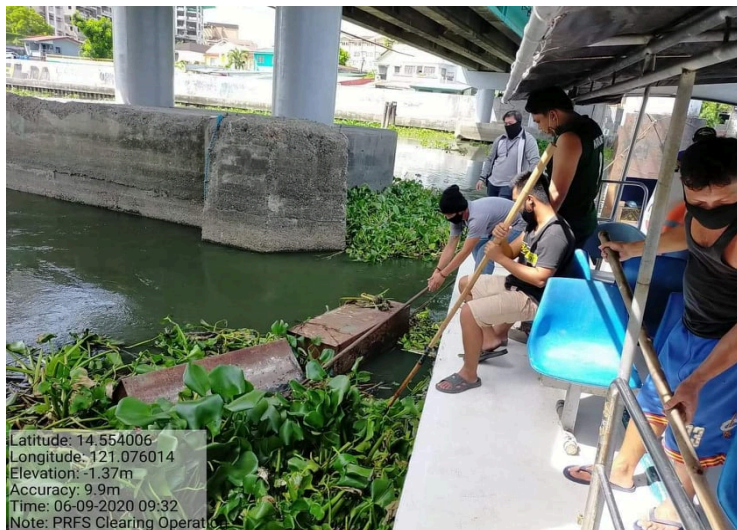
# SUPPORT ACTIVITIES

- \* improvement of docking facilities for maintenance of ferry boats





Fabrication of permanent Hyacinth and Trash Trap at the mouth of Laguna Lake



Installation of Water Hyacinth and Trash Trap along Pasig River



- \* regular clearing operations along the Pasig River of water hyacinth and other floating garbage and debris using trash skimmers, trash boats and trash traps.



# MAJOR PROJECTS, 2020-2022

- \* Opening of new stations – Kalawaan, Circuit Makati, and Quinta Market as well as DBM and Intramuros (once availability of lot is confirmed) – also future stations around Laguna Lake and Manila Bay
- \* Procurement of additional boats and other equipment

- ❖ **Continuous clearing of river of water hyacinth and other floating garbage/debris (in coordination with DENR, DILG, LGUs and Barangays**
- ❖ **Installation of new and better directional signs for ferry stations**
- \* **Aggressive advertisements using the tri-media outlets, e.g. newspaper, television and radio**
- \* **Re-introduce special river tours for foreign and domestic visitors under the new normal**

**\* Printing and dissemination of infographics through posters and flyers in transport terminals**

**\* Setting up of cashless payment of fare**

**\* Ensure security and peace and order along the river and within the vicinity of the ferry stations (in coordination with the PCG, PNP-Maritime Group, DILG, LGUs and Barangays)**

- \* Clearing and improvements of easements, pathways, sidewalks and bikeways leading to ferry stations which include lighting**

**END OF PRESENTATION**

**THANK YOU!**