



MARITIME INDUSTRY AUTHORITY
WEEKLY SUMMARY SITUATION REPORT - Summary 26
 Passenger and Cargo Shipping Operations on September 11 to 17, 2020
 in areas under MGCQ and GCQ
Data generated on September 11 to 17, 2020, 3:00 PM

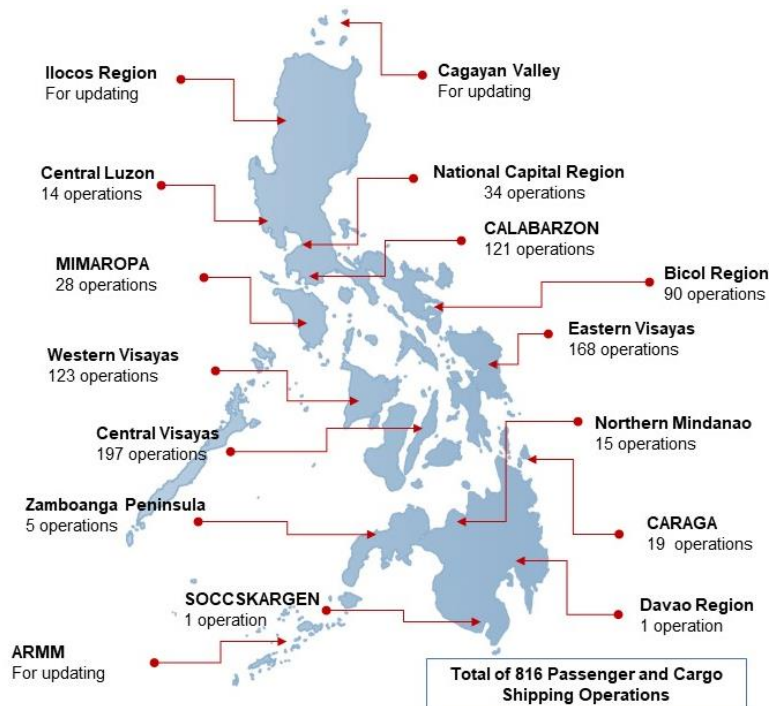
HIGHLIGHTS

- Seventy-five percent (75%) of passenger and cargo shipping operations were completed in accordance with the ships' CPC.
- Twenty-five percent (25%) of the shipping operations were affected due to the measures implemented in view Code Red Sublevel 2 for the COVID-19.
- Operations of passenger ships were more affected compared to cargo ships. 96% of the cargo shipping operations were completed under normal conditions compared to passenger ships at 68%.
- Daily average passenger and cargo ship operations are 153 completed under normal conditions, 28 cancelled trips, 24 delayed and 0 not completed voyage.
- **With cargo shipping still operational, transport of goods amid MGCQ and GCQ is assured.**

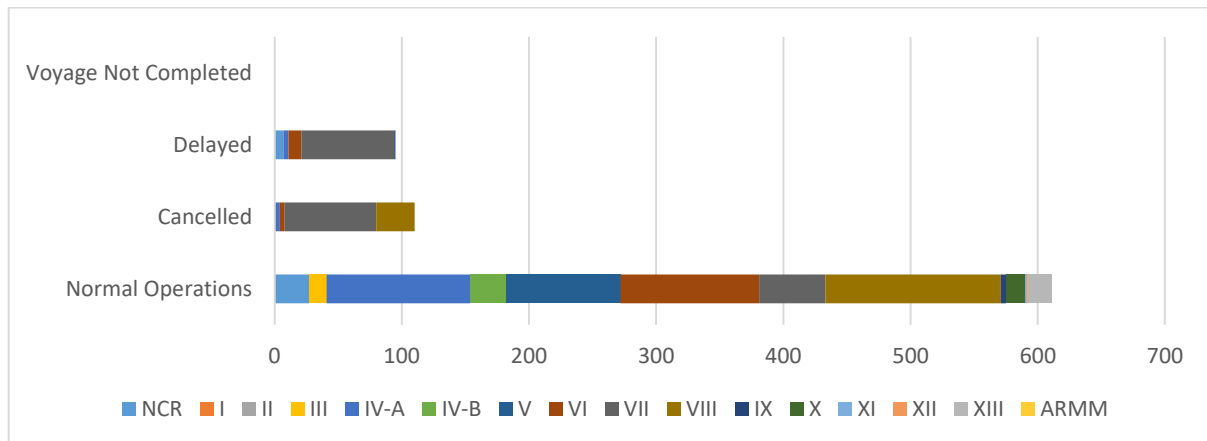
PASSENGER AND CARGO SHIPPING IN NUMBERS
 September 11 to 17, 2020

- 816** Shipping Operations Recorded
- 625** Passenger Ships Operated
- 191** Cargo Ships Operated
- 611** Ships Operated Normally
- 110** Operations Cancelled
- 95** Operations Delayed
- 0** Operation Uncompleted

PASSENGER AND CARGO SHIPPING OPERATIONS IN THE PHILIPPINES
IN AREAS UNDER MGCQ and GCQ



I. STATUS OF SHIPPING OPERATIONS NATIONWIDE



On September 11 to 17, 2020, there were 816 passenger and cargo shipping operations conducted wherein 611 or 75% were completed in accordance with their Certificate of Public Convenience (CPC).

Out of the 611 operations completed under normal conditions, the reported movements were mostly in the Eastern Visayas Region at 23% and Calabarzon Region at 18%.

Meanwhile, 13% of the passenger and cargo shipping operations were cancelled, all due to the community quarantine measures imposed by the different local government units governing the ships' ports of destination. Mostly affected were operations in the Central Visayas and Eastern Visayas Regions.

Ninety-four (94) passenger ships or 15% encountered delays due to the additional measures adopted in view of COVID-19 such as temperature screening and inspections.

Lastly, no passenger and cargo shipping operation was not completed at the time of reporting.

II. STATUS OF SHIPPING OPERATIONS BY CLASSIFICATION

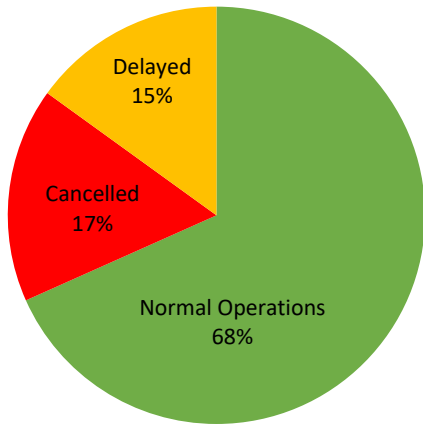
Region	Normal Operations		Cancelled		Delayed		Not Completed	
	Passenger	Cargo	Passenger	Cargo	Passenger	Cargo	Passenger	Cargo
NCR	6	21	0	0	6	1	0	0
I	0	0	0	0	0	0	0	0
II	0	0	0	0	0	0	0	0
III	0	14	0	0	0	0	0	0
IV-A	94	19	4	0	4	0	0	0
IV-B	25	3	0	0	0	0	0	0
V	82	8	0	0	0	0	0	0
VI	60	49	4	0	10	0	0	0
VII	0	52	66	6	73	0	0	0
VIII	129	9	30	0	0	0	0	0
IX	1	3	0	0	1	0	0	0
X	11	4	0	0	0	0	0	0
XI	0	1	0	0	0	0	0	0
XII	0	1	0	0	0	0	0	0
XIII	19	0	0	0	0	0	0	0
ARMM	0	0	0	0	0	0	0	0
Total	427	184	104	6	94	1	0	0

Amid the measures in place due to MGCQ and GCQ, 184 out of 191 (96%) cargo ships still operated normally – are 1 chemical tanker, 10 container ships, 2 general cargo ships, 100 LCT ships, 61 oil tankers and 10 Roro cargo ships.

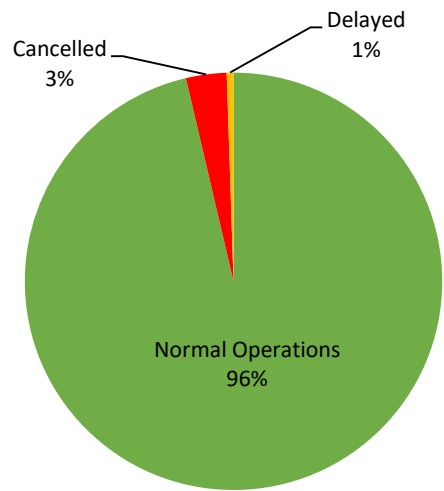
Four hundred and twenty-seven (427) passenger ships completed their voyage – 310 conventional passenger ships and 75 RoPax ships completed their operations but mostly only carried cargoes during their voyage.

Meanwhile out of the 625 passenger ships, 32% were affected by the measures adopted in view of COVID-19. These measures caused either the cancellation, delay, or uncompleted operations of 198 passenger ships.

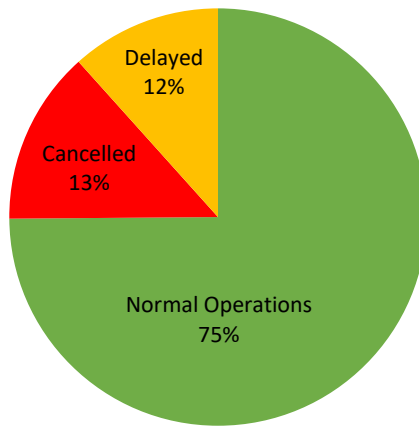
PASSENGER Ship Operations



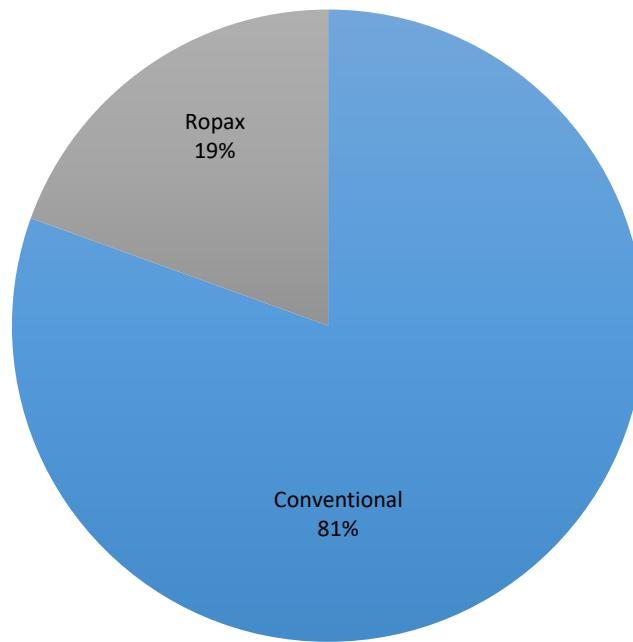
CARGO Ship Operations



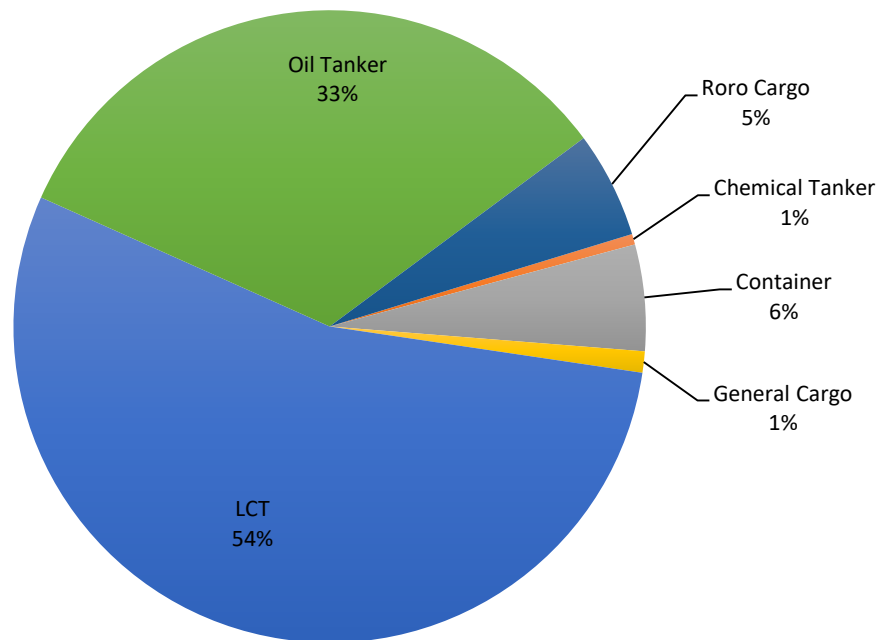
PASSENGER and CARGO Ship Operations



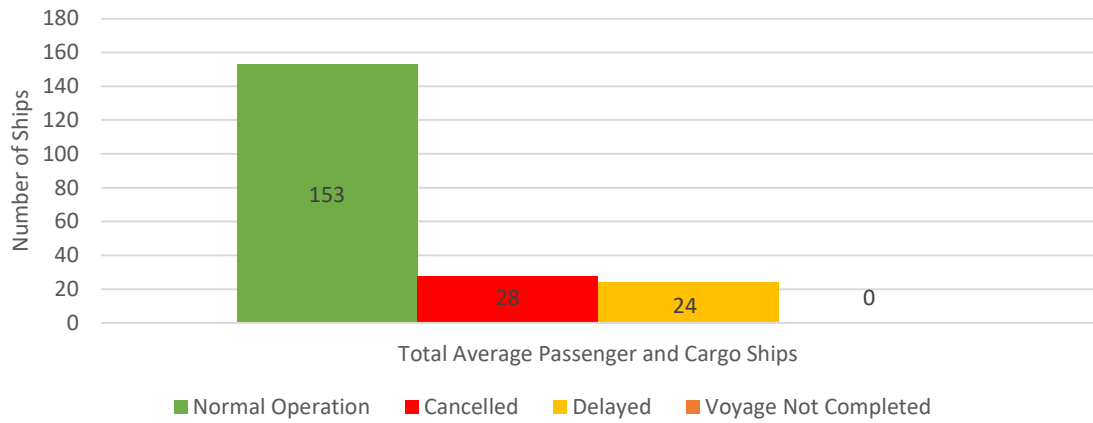
Passenger Ship Types under Normal Operations



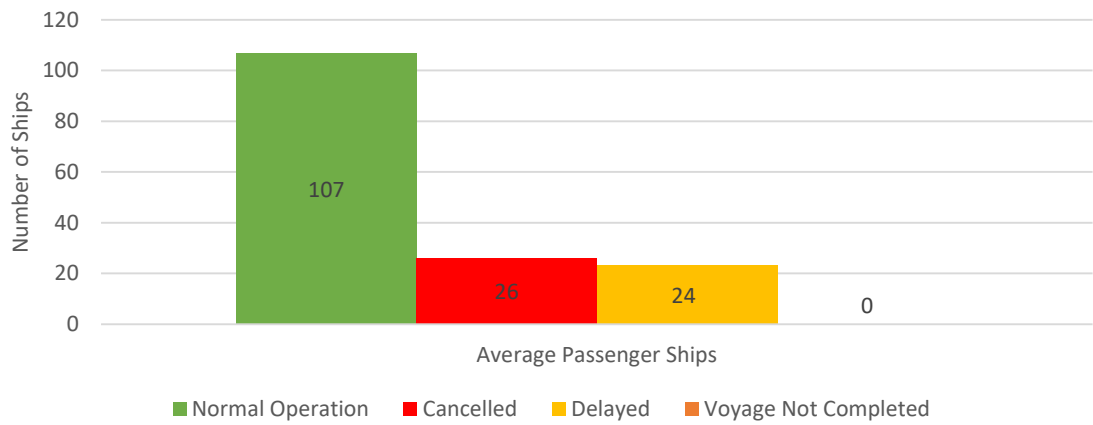
Cargo Ship Types under Normal Operations



Daily Average Passenger and Cargo Ship Operation



Daily Average Passenger Ship Operation



Daily Average Cargo Ship Operation

