



MARITIME INDUSTRY AUTHORITY WEEKLY SUMMARY SITUATION REPORT - Summary 32

Passenger and Cargo Shipping Operations on October 23-29, 2020
in areas under MGCQ and GCQ

Data generated on October 23-29, 2020, 3:00 PM

HIGHLIGHTS

- Eighty-six percent (86%) of passenger and cargo shipping operations were completed in accordance with the ships' CPC.
- Fourteen percent (14%) of the shipping operations were affected due to the measures implemented in view Code Red Sublevel 2 for the COVID-19.
- Operations of cargo ships were more affected compared to cargo ships. 84% of the cargo shipping operations were completed under normal conditions compared to passenger ships at 86%.
- Daily average passenger and cargo ship operations are 161 completed under normal conditions, 12 cancelled trips, 13 delayed and 0 not completed voyage.
- **With cargo shipping still operational, transport of goods amid MGCQ, and GCQ is assured.**

PASSENGER AND CARGO SHIPPING IN NUMBERS

October 23-29, 2020

750 Shipping Operations Recorded

695 Passenger Ships Operated

55 Cargo Ships Operated

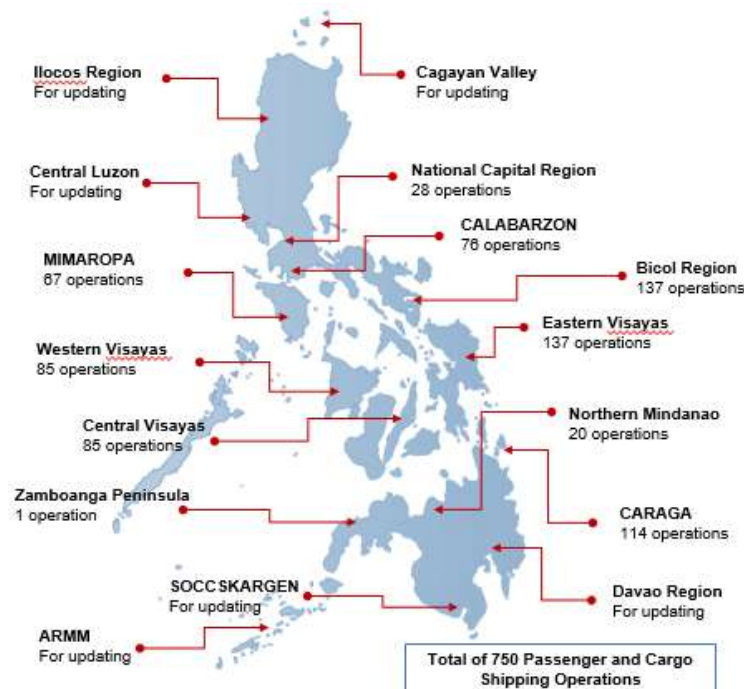
644 Ships Operated Normally

53 Operations Cancelled

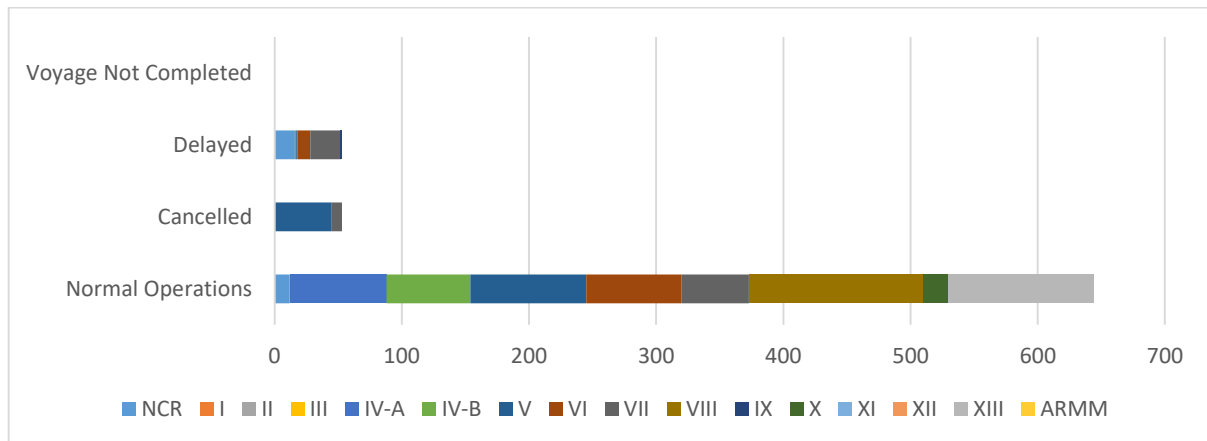
53 Operations Delayed

0 Operation Uncompleted

PASSENGER AND CARGO SHIPPING OPERATIONS IN THE PHILIPPINES IN AREAS UNDER MGCQ and GCQ



I. STATUS OF SHIPPING OPERATIONS NATIONWIDE



On October 23-29, 2020, there were 750 passenger and cargo shipping operations conducted wherein 644 or 86% were completed in accordance with their Certificate of Public Convenience (CPC).

Out of the 644 operations completed under normal conditions, the reported movements were mostly in the Eastern Visayas Region at 21% and Bicol Region at 18%.

Meanwhile, 7% of the passenger and cargo shipping operations were cancelled, all due to the community quarantine measures imposed by the different local government units governing the ships' ports of destination. Mostly affected were operations in the Bicol and Central Visayas Regions.

Forty-four (44) passenger ships or 6% encountered delays due to the additional measures adopted in view of COVID-19 such as temperature screening and inspections.

Lastly, no passenger and cargo shipping operations were not completed at the time of reporting.

II. STATUS OF SHIPPING OPERATIONS BY CLASSIFICATION

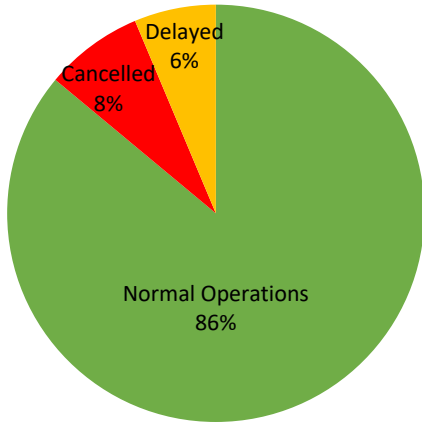
Region	Normal Operations		Cancelled		Delayed		Not Completed	
	Passenger	Cargo	Passenger	Cargo	Passenger	Cargo	Passenger	Cargo
NCR	2	10	-	-	10	6	-	-
I	-	-	-	-	-	-	-	-
II	-	-	-	-	-	-	-	-
III	-	-	-	-	-	-	-	-
IV-A	74	2	-	-	-	-	-	-
IV-B	63	3	-	-	-	1	-	-
V	86	5	45	-	1	-	-	-
VI	71	4	-	-	9	1	-	-
VII	34	19	8	-	24	-	-	-
VIII	137	-	-	-	-	-	-	-
IX	-	-	-	-	-	1	-	-
X	18	2	-	-	-	-	-	-
XI	-	-	-	-	-	-	-	-
XII	-	-	-	-	-	-	-	-
XIII	113	1	-	-	-	-	-	-
ARMM	-	-	-	-	-	-	-	-
Total	598	46	53	-	44	9	-	-

Amid the measures in place due to MGCQ, and GCQ, 46 out of 55 (84%) cargo ships still operated normally – are 17 container ships, 1 general cargo ships, 18 LCT ships, and, 10 Roro cargo ships.

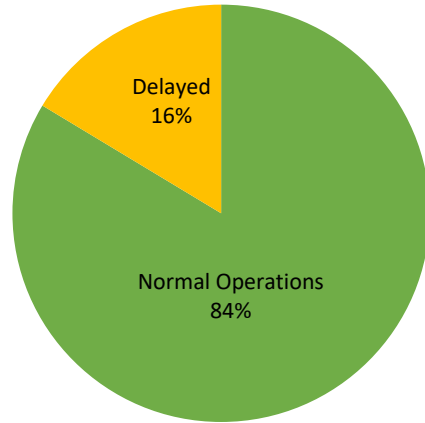
Forty-two (598) passenger ships completed their voyage – 535 conventional passenger ships, 43 RoPax ships and 20 fast craft ferry completed their operations but mostly only carried cargoes during their voyage.

Meanwhile out of the 695 passenger ships, 14% were affected by the measures adopted in view of COVID-19. These measures caused either the cancellation, delay, or uncompleted operations of 97 passenger ships.

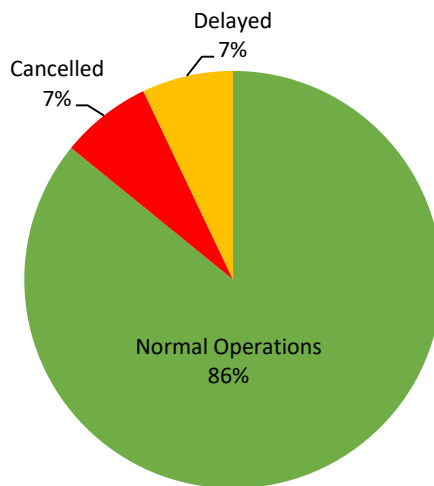
PASSENGER Ship Operations



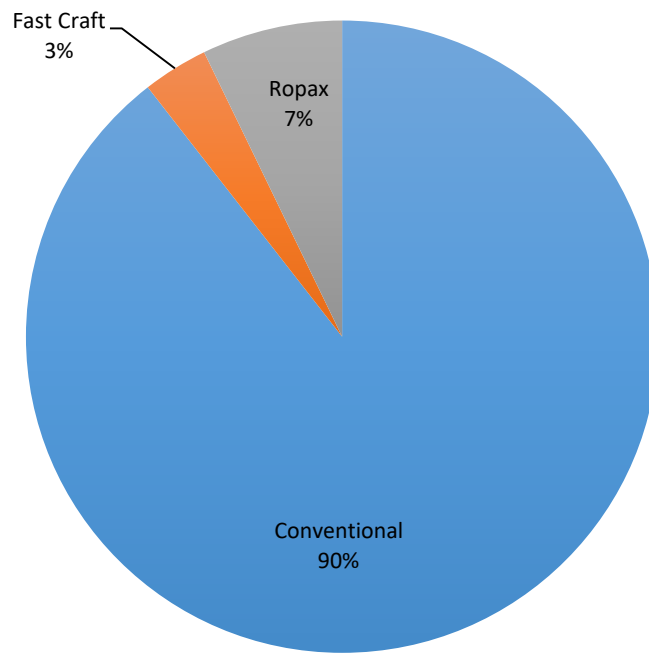
CARGO Ship Operations



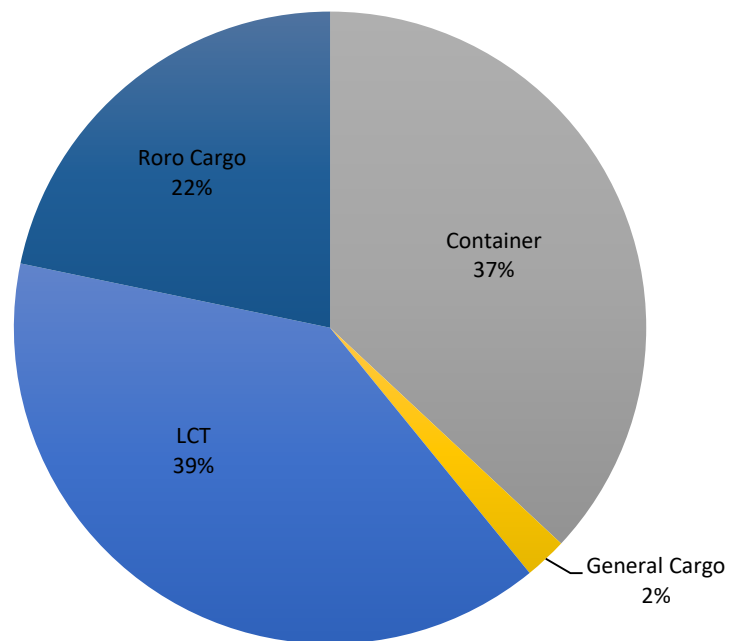
PASSENGER and CARGO Ship Operations



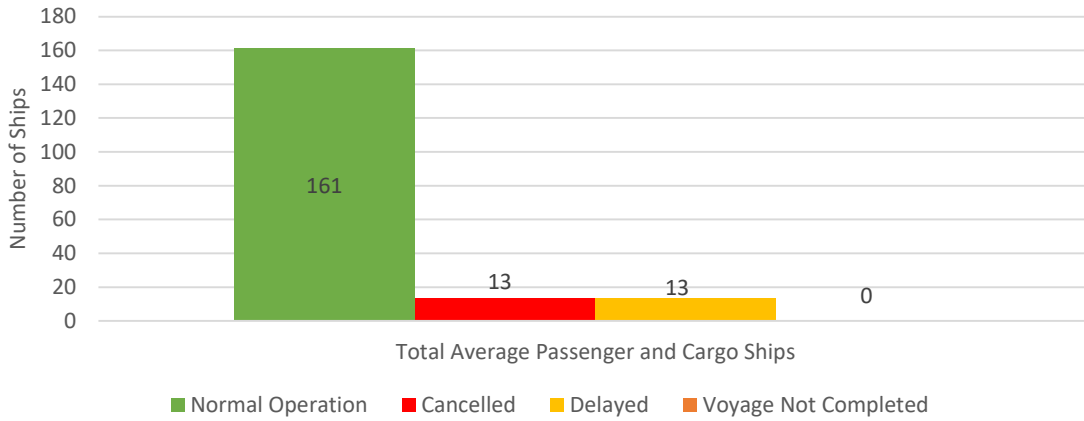
Passenger Ship Types under Normal Operations



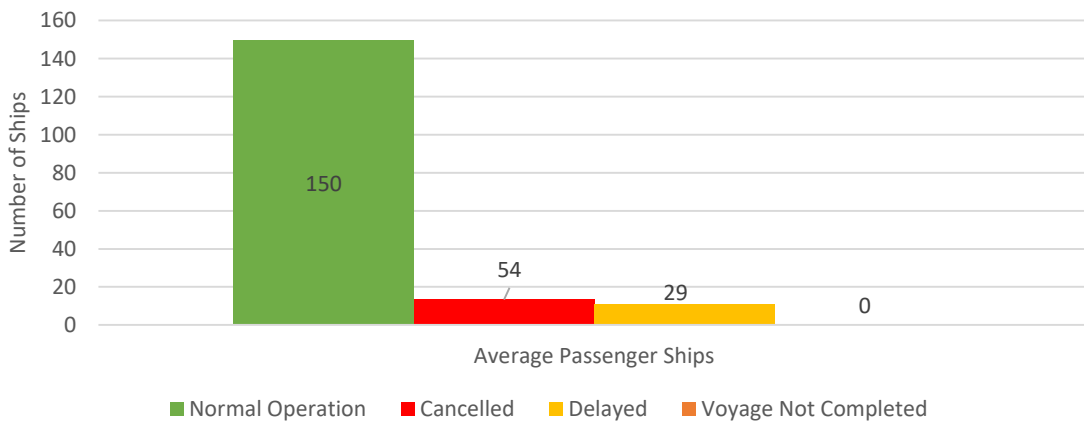
Cargo Ship Types under Normal Operations



Daily Average Passenger and Cargo Ship Operation



Daily Average Passenger Ship Operation



Daily Average Cargo Ship Operation

