



MARITIME INDUSTRY AUTHORITY
WEEKLY SUMMARY SITUATION REPORT - Summary 36
 Passenger and Cargo Shipping Operations on Nov. 20-26, 2020
 in areas under MGCQ and GCQ
Data generated on Nov. 20-26, 2020, 3:00 PM

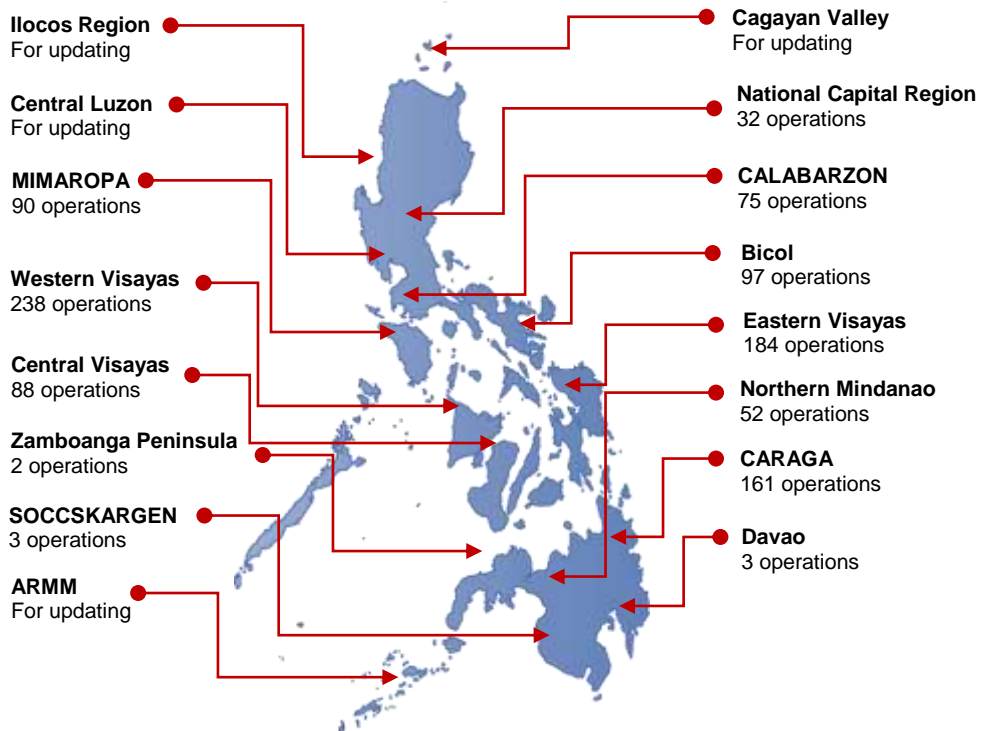
HIGHLIGHTS

- Ninety-six percent (96%) of passenger and cargo shipping operations were completed in accordance with the ships' CPC.
- Four percent (4%) of the shipping operations were affected due to the measures implemented in view Code Red Sublevel 2 for the COVID-19.
- Operations of passenger ships were more affected compared to cargo ships. 98% of the cargo shipping operations were completed under normal conditions compared to passenger ships at 94%.
- Daily average passenger and cargo ship operations are 246 completed under normal conditions, 2 cancelled trips, 8 delayed and 0 not completed voyage.
- **With cargo shipping still operational, transport of goods amid MGCQ, and GCQ is assured.**

PASSENGER AND CARGO SHIPPING IN NUMBERS
 Nov. 20-26, 2020

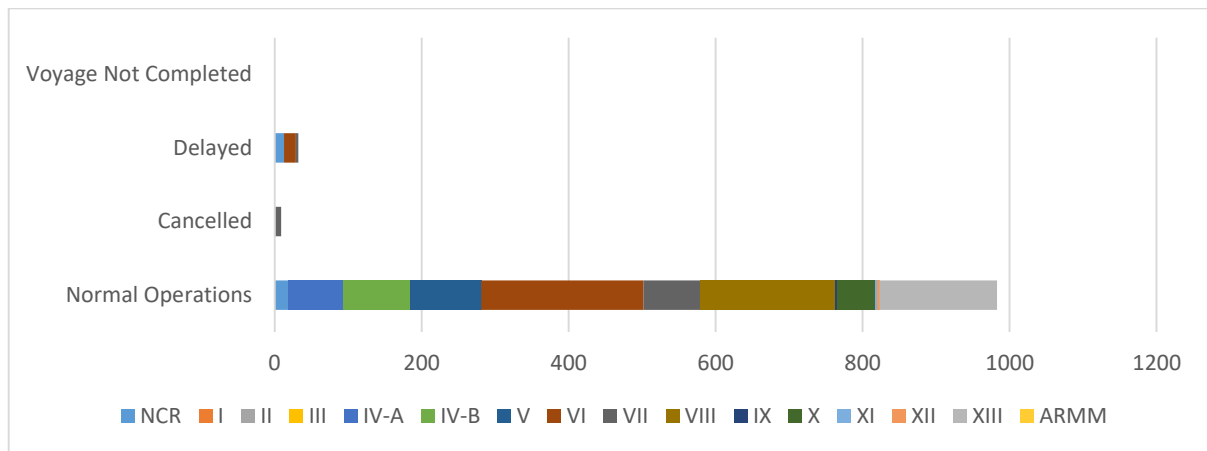
- 1025** Shipping Operations Recorded
- 632** Passenger Ships Operated
- 393** Cargo Ships Operated
- 983** Ships Operated Normally
- 9** Operations Cancelled
- 33** Operations Delayed
- 0** Operation Uncompleted

PASSENGER AND CARGO SHIPPING OPERATIONS IN THE PHILIPPINES
IN AREAS UNDER MGCQ and GCQ



Total of 1025 Passenger and Cargo Shipping Operations

I. STATUS OF SHIPPING OPERATIONS NATIONWIDE



On Nov. 20-26, 2020, there were 1025 passenger and cargo shipping operations conducted wherein 983 or 96% were completed in accordance with their Certificate of Public Convenience (CPC).

Out of the 983 operations completed under normal conditions, the reported movements were mostly in the Eastern Visayas Region at 22% and Western Visayas Region at 19%.

Meanwhile, 1% of the passenger and cargo shipping operations were cancelled, all due to the community quarantine measures imposed by the different local government units governing the ships' ports of destination. Mostly affected were operations in the Central Visayas Region.

Twenty-seven (27) passenger ships or 4% encountered delays due to the additional measures adopted in view of COVID-19 such as temperature screening and inspections.

Lastly, no passenger and cargo shipping operations were not completed at the time of reporting.

II. STATUS OF SHIPPING OPERATIONS BY CLASSIFICATION

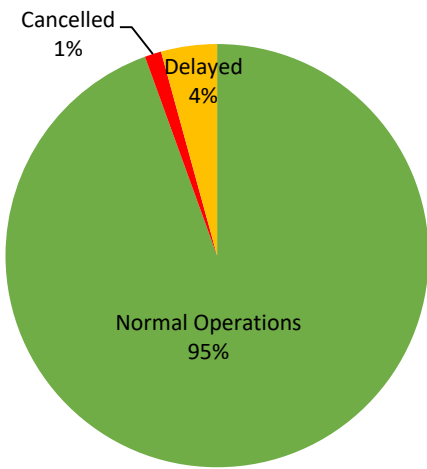
Region	Normal Operations		Cancelled		Delayed		Not Completed	
	Passenger	Cargo	Passenger	Cargo	Passenger	Cargo	Passenger	Cargo
NCR	3	16	-	-	9	4	-	-
I	-	-	-	-	-	-	-	-
II	-	-	-	-	-	-	-	-
III	-	-	-	-	-	-	-	-
IV-A	42	33	-	-	-	-	-	-
IV-B	47	43	-	-	-	-	-	-
V	83	14	-	-	-	-	-	-
VI	158	63	1	-	15	1	-	-
VII	25	52	7	1	2	1	-	-
VIII	76	108	-	-	-	-	-	-
IX	-	2	-	-	-	-	-	-
X	33	19	-	-	-	-	-	-
XI	-	3	-	-	-	-	-	-
XII	-	3	-	-	-	-	-	-
XIII	130	30	-	-	1	-	-	-
ARMM	-	-	-	-	-	-	-	-
Total	597	386	8	1	27	6	-	-

Amid the measures in place due to MGCQ, and GCQ, 386 out of 393 (98%) cargo ships still operated normally – are 33 bulk carrier, 38 container ships, 19 general cargo ships, 93 LCT ships, 1 oil tankers, 202 Roro cargo ships.

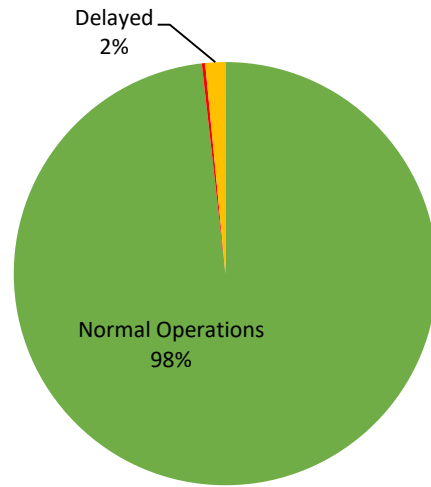
Five hundred ninety seven (597) passenger ships completed their voyage – 328 conventional passenger ships, 246 RoPax ships and 23 fast craft ferry completed their operations but mostly only carried cargoes during their voyage.

Meanwhile out of the 632 passenger ships, 6% were affected by the measures adopted in view of COVID-19. These measures caused either the cancellation, delay, or uncompleted operations of 35 passenger ships.

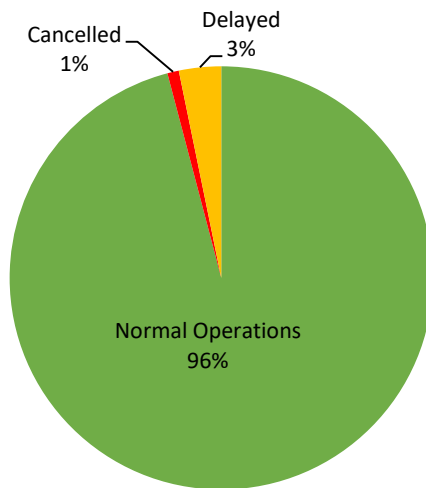
PASSENGER Ship Operations



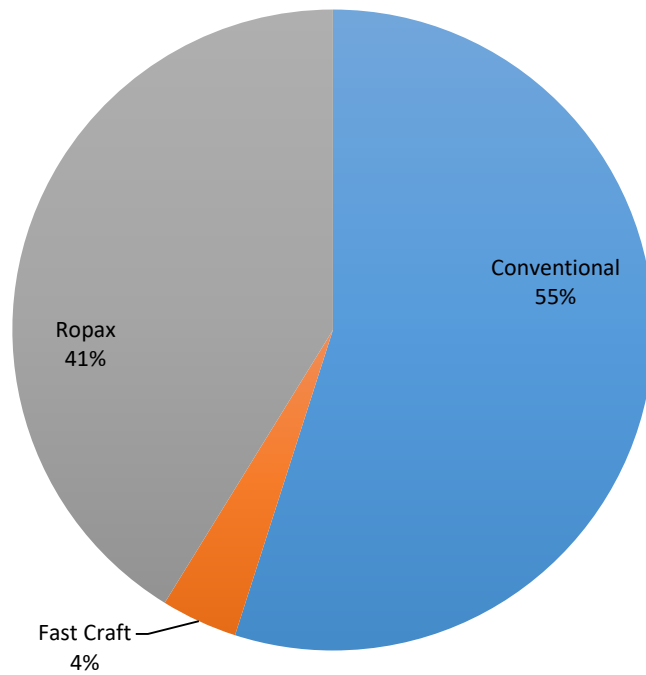
CARGO Ship Operations



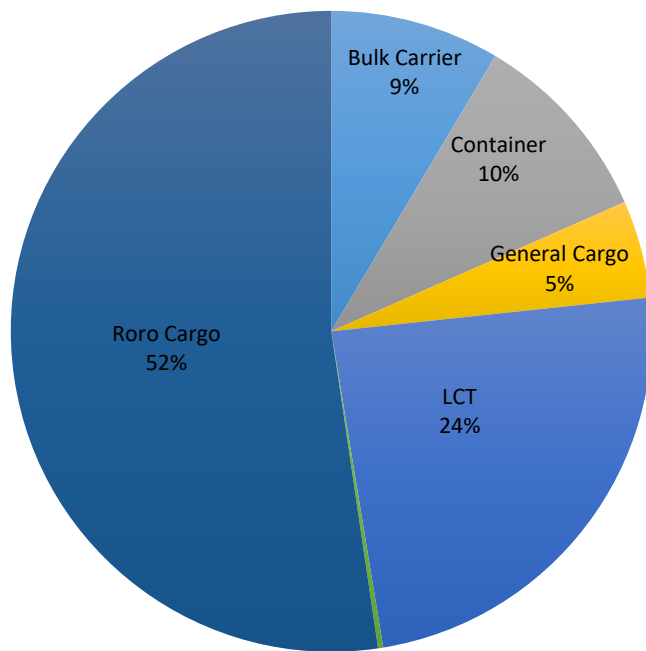
PASSENGER and CARGO Ship Operations



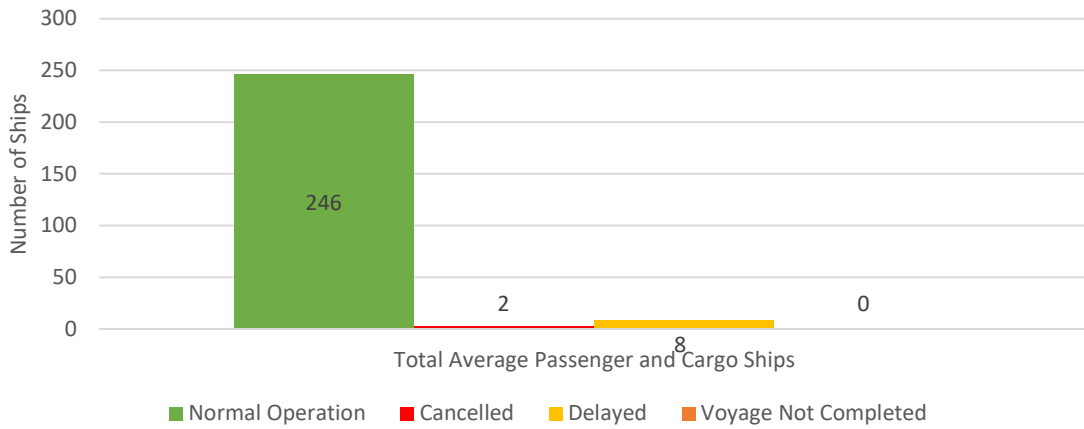
Passenger Ship Types under Normal Operations



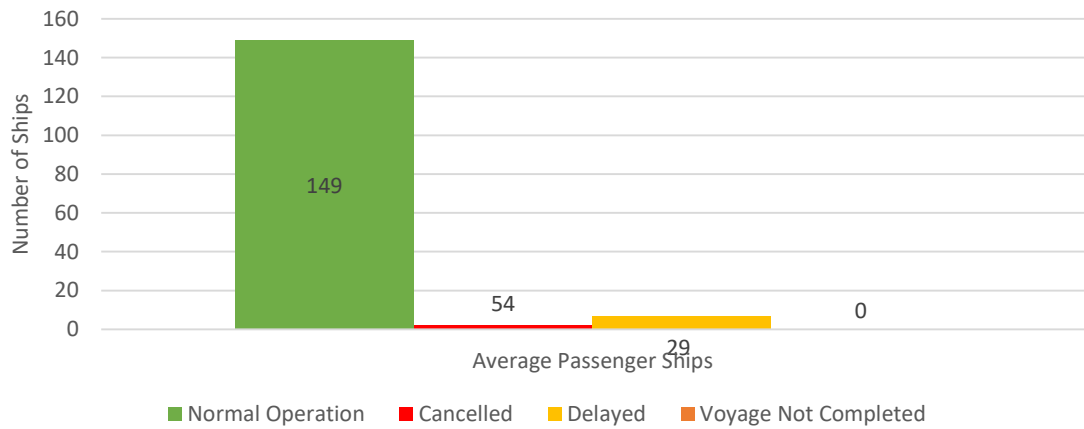
Cargo Ship Types under Normal Operations



Daily Average Passenger and Cargo Ship Operation



Daily Average Passenger Ship Operation



Daily Average Cargo Ship Operation

