



**MARITIME INDUSTRY AUTHORITY
WEEKLY SUMMARY SITUATION REPORT - Summary 37**

Passenger and Cargo Shipping Operations on Nov. 27- Dec. 04, 2020
in areas under MGCQ and GCQ

Data generated on Nov. 27- Dec. 04, 2020, 3:00 PM

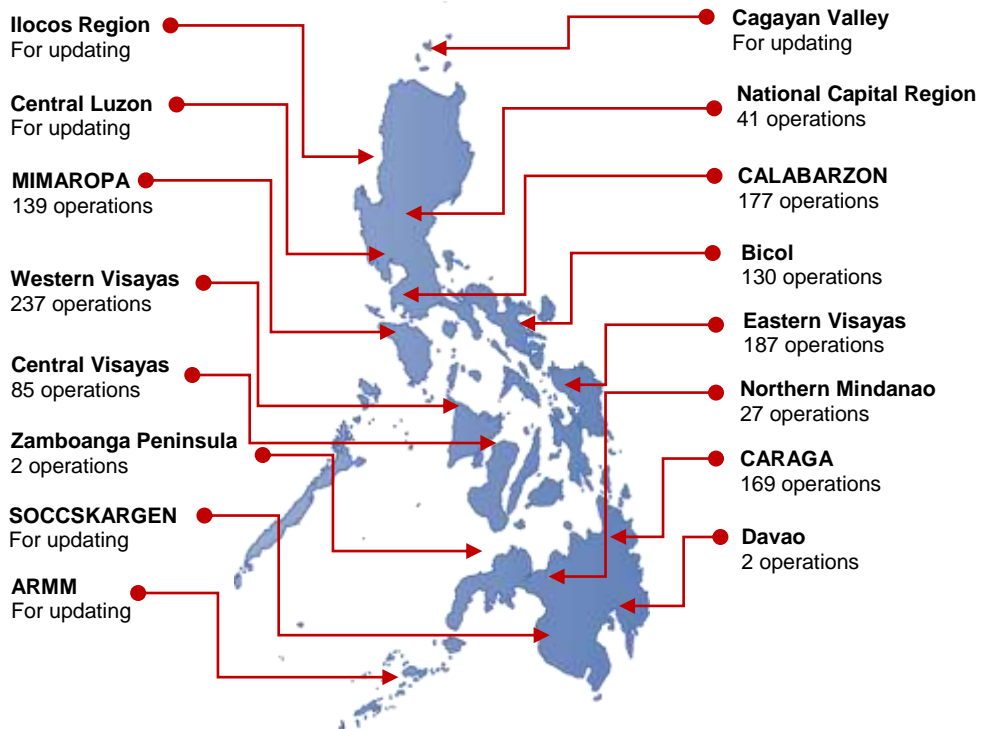
HIGHLIGHTS

- Ninety-six percent (96%) of passenger and cargo shipping operations were completed in accordance with the ships' CPC.
- Four percent (4%) of the shipping operations were affected due to the measures implemented in view Code Red Sublevel 2 for the COVID-19.
- Operations of passenger ships were more affected compared to cargo ships. 99% of the cargo shipping operations were completed under normal conditions compared to passenger ships at 95%.
- Daily average passenger and cargo ship operations are 286 completed under normal conditions, 2 cancelled trips, 9 delayed and 0 not completed voyage.
- **With cargo shipping still operational, transport of goods amid MGCQ, and GCQ is assured.**

PASSENGER AND CARGO SHIPPING IN NUMBERS
Nov. 27- Dec. 04, 2020

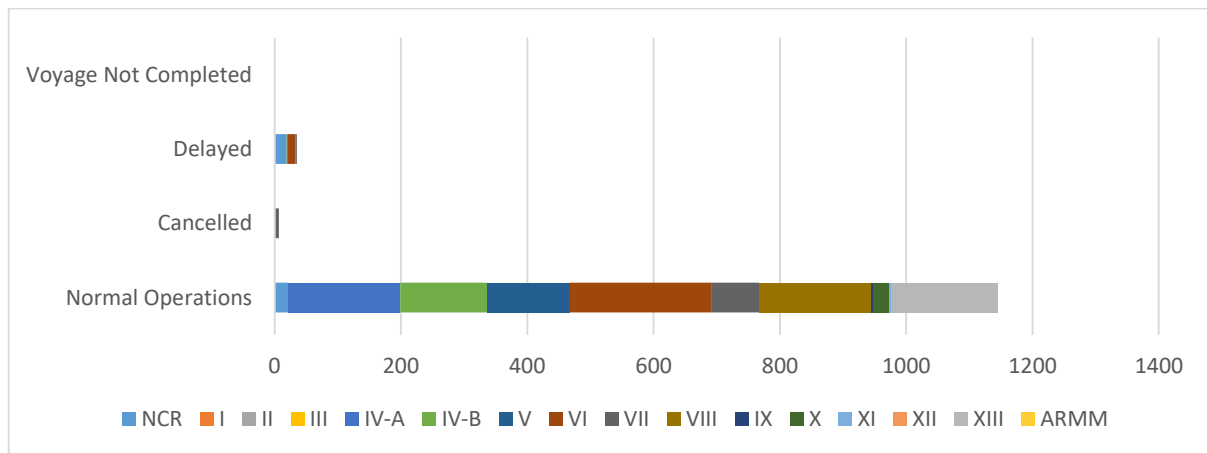
- 1187** Shipping Operations Recorded
- 733** Passenger Ships Operated
- 454** Cargo Ships Operated
- 1145** Ships Operated Normally
- 7** Operations Cancelled
- 35** Operations Delayed
- 0** Operation Uncompleted

**PASSENGER AND CARGO SHIPPING OPERATIONS IN THE PHILIPPINES
IN AREAS UNDER MGCQ and GCQ**



Total of 1187 Passenger and Cargo Shipping Operations

I. STATUS OF SHIPPING OPERATIONS NATIONWIDE



On Nov. 27- Dec. 04, 2020, there were 1187 passenger and cargo shipping operations conducted wherein 1145 or 96% were completed in accordance with their Certificate of Public Convenience (CPC).

Out of the 1145 operations completed under normal conditions, the reported movements were mostly in the Eastern Visayas Region at 20% and Western Visayas Region at 16%.

Meanwhile, 1% of the passenger and cargo shipping operations were cancelled, all due to the community quarantine measures imposed by the different local government units governing the ships' ports of destination. Mostly affected were operations in the Central Visayas Region.

Twenty-nine (29) passenger ships or 4% encountered delays due to the additional measures adopted in view of COVID-19 such as temperature screening and inspections.

Lastly, no passenger and cargo shipping operations were not completed at the time of reporting.

II. STATUS OF SHIPPING OPERATIONS BY CLASSIFICATION

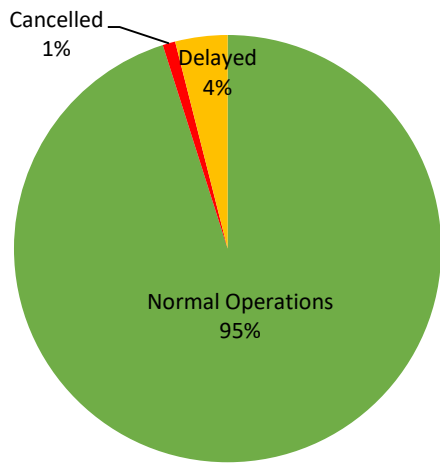
Region	Normal Operations		Cancelled		Delayed		Not Completed	
	Passenger	Cargo	Passenger	Cargo	Passenger	Cargo	Passenger	Cargo
NCR	3	19	-	-	14	5	-	-
I	-	-	-	-	-	-	-	-
II	-	-	-	-	-	-	-	-
III	-	-	-	-	-	-	-	-
IV-A	95	82	-	-	-	-	-	-
IV-B	72	66	-	-	1	-	-	-
V	103	27	-	-	-	-	-	-
VI	169	55	-	-	13	-	-	-
VII	28	48	7	-	1	1	-	-
VIII	74	104	-	-	-	-	-	-
IX	-	2	-	-	-	-	-	-
X	16	11	-	-	-	-	-	-
XI	-	2	-	-	-	-	-	-
XII	-	-	-	-	-	-	-	-
XIII	137	32	-	-	-	-	-	-
ARMM	-	-	-	-	-	-	-	-
Total	697	448	7	-	29	6	-	-

Amid the measures in place due to MGCQ, and GCQ, 448 out of 454 (99%) cargo ships still operated normally – are 27 bulk carrier, 45 container ships, 26 general cargo ships, 84 LCT ships, 266 Roro cargo ships.

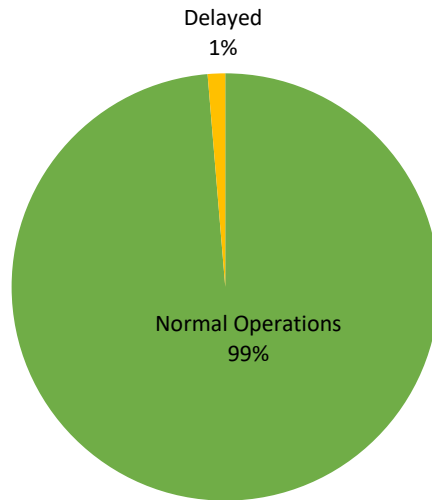
Six hundred ninety seven (697) passenger ships completed their voyage – 368 conventional passenger ships, 303 RoPax ships and 26 fast craft ferry completed their operations but mostly only carried cargoes during their voyage.

Meanwhile out of the 733 passenger ships, 5% were affected by the measures adopted in view of COVID-19. These measures caused either the cancellation, delay, or uncompleted operations of 36 passenger ships.

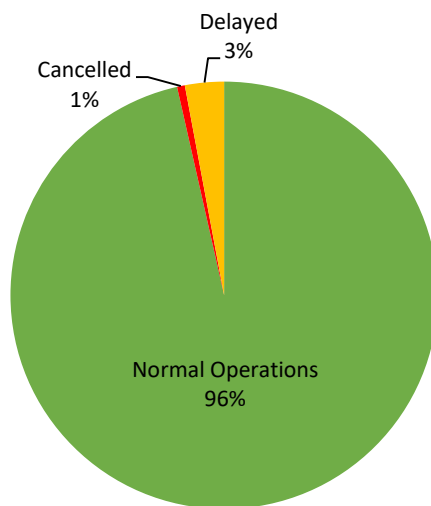
PASSENGER Ship Operations



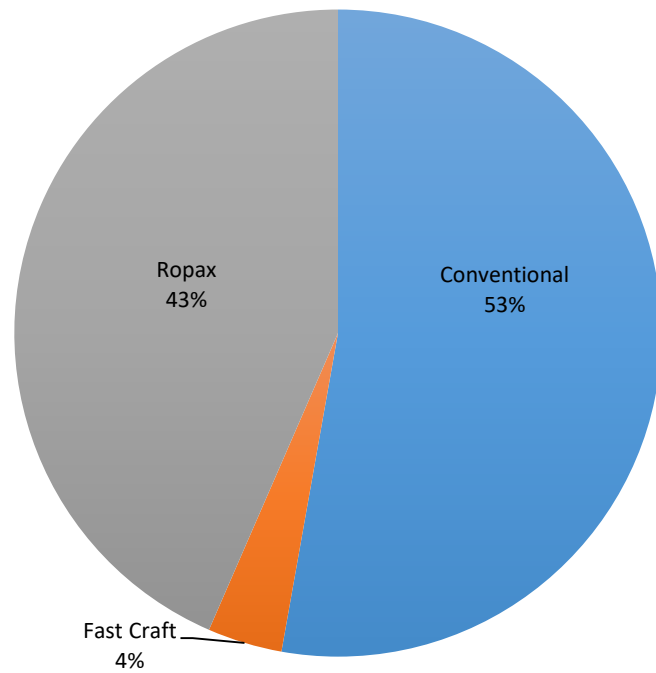
CARGO Ship Operations



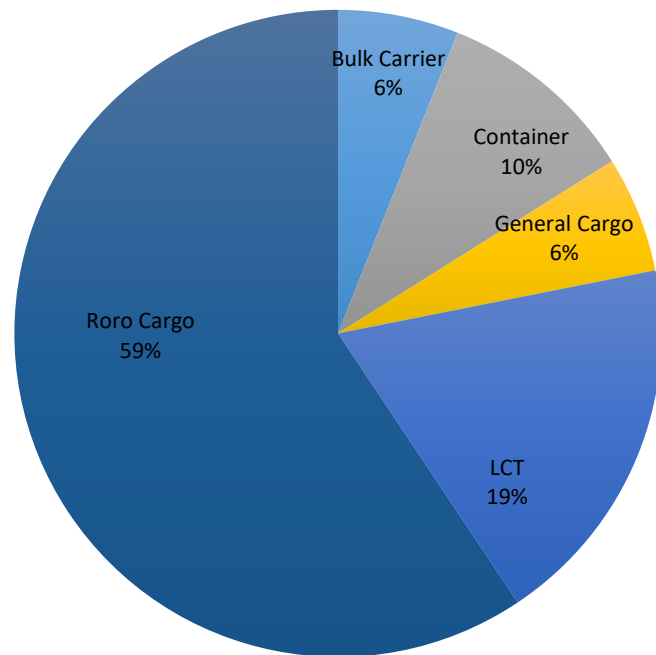
PASSENGER and CARGO Ship Operations



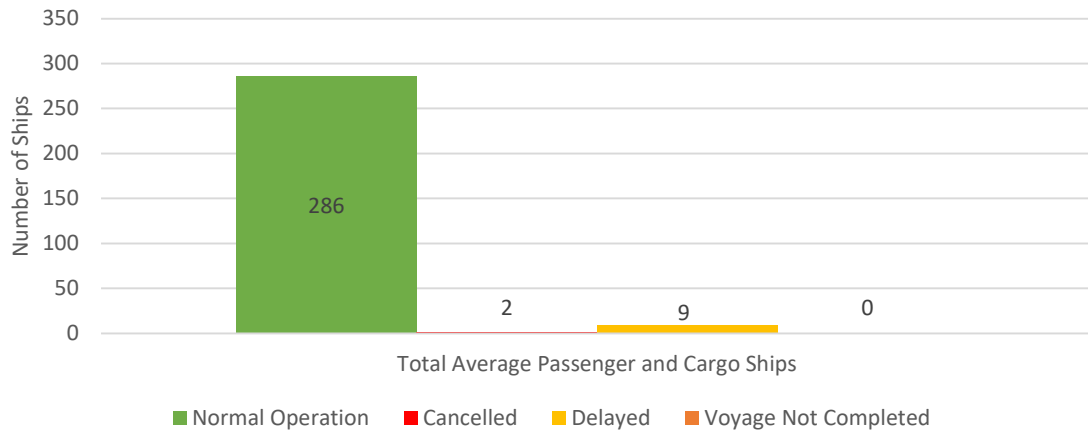
Passenger Ship Types under Normal Operations



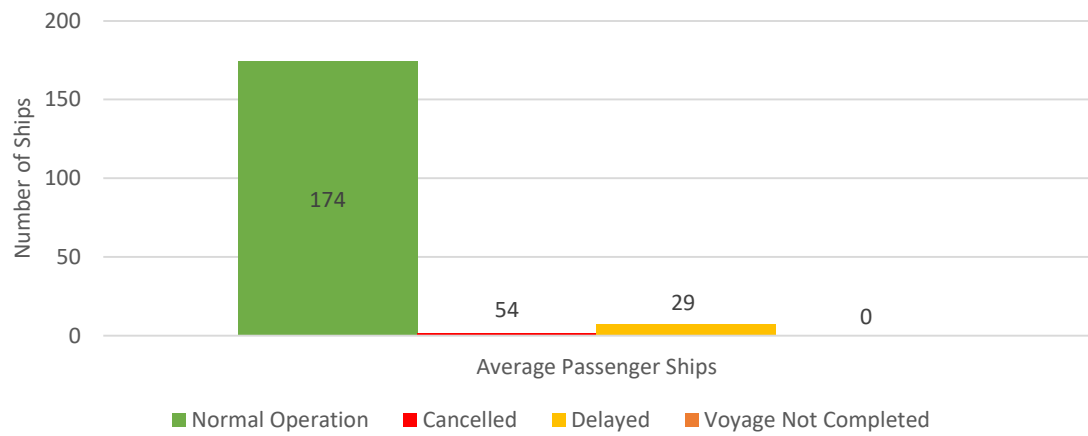
Cargo Ship Types under Normal Operations



Daily Average Passenger and Cargo Ship Operation



Daily Average Passenger Ship Operation



Daily Average Cargo Ship Operation

