



MARITIME INDUSTRY AUTHORITY
WEEKLY SUMMARY SITUATION REPORT - Summary 38
 Passenger and Cargo Shipping Operations on Dec. 04-10, 2020
 in areas under MGCQ and GCQ
Data generated on Dec. 04-10, 2020, 3:00 PM

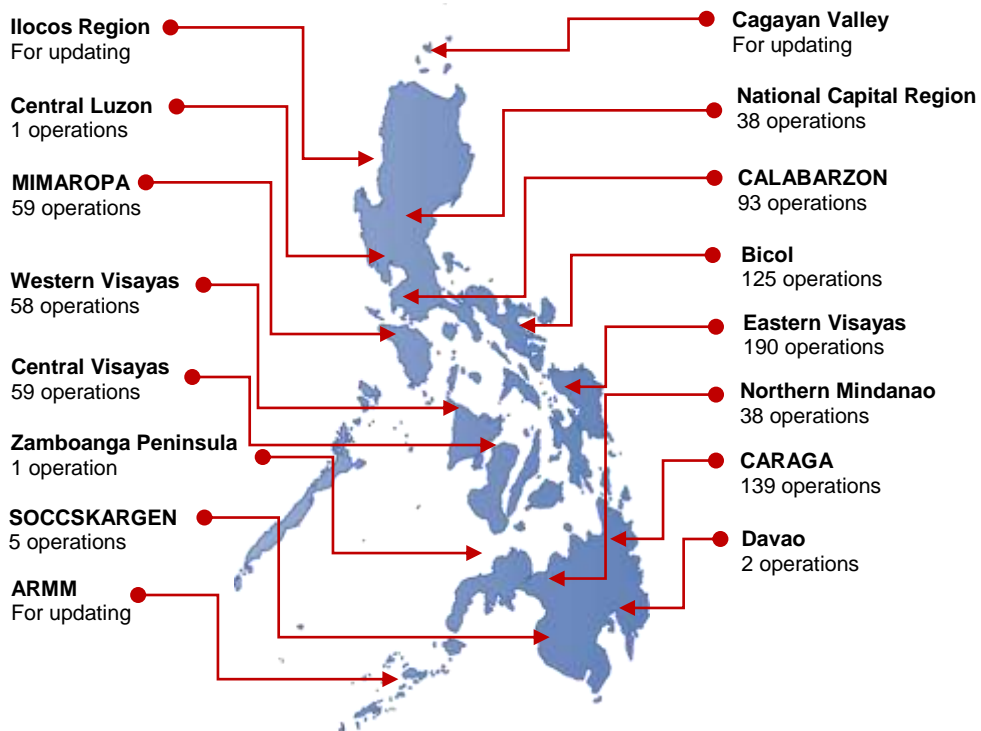
HIGHLIGHTS

- Ninety-five percent (95%) of passenger and cargo shipping operations were completed in accordance with the ships' CPC.
- Five percent (5%) of the shipping operations were affected due to the measures implemented in view Code Red Sublevel 2 for the COVID-19.
- Operations of cargo ships were more affected compared to passenger ships. 98% of the cargo shipping operations were completed under normal conditions compared to passenger ships at 93%.
- Daily average passenger and cargo ship operations are 192 completed under normal conditions, 2 cancelled trips, 8 delayed and 0 not completed voyage.
- **With cargo shipping still operational, transport of goods amid MGCQ, and GCQ is assured.**

PASSENGER AND CARGO SHIPPING IN NUMBERS
 Dec. 04-10, 2020

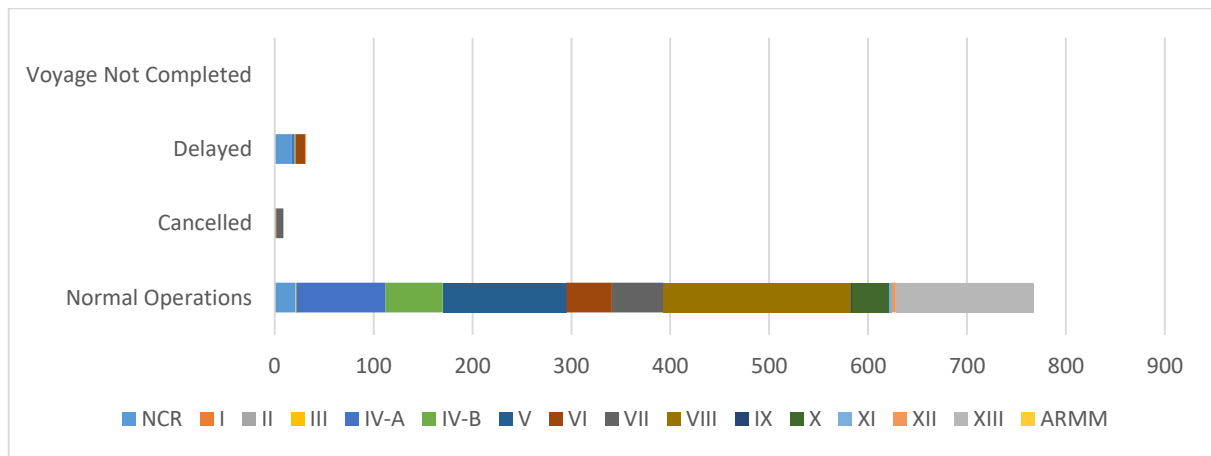
- 808** Shipping Operations Recorded
- 484** Passenger Ships Operated
- 324** Cargo Ships Operated
- 767** Ships Operated Normally
- 9** Operations Cancelled
- 32** Operations Delayed
- 0** Operation Uncompleted

PASSENGER AND CARGO SHIPPING OPERATIONS IN THE PHILIPPINES
IN AREAS UNDER MGCQ and GCQ



Total of 808 Passenger and Cargo Shipping Operations

I. STATUS OF SHIPPING OPERATIONS NATIONWIDE



On Dec. 04-10, 2020, there were 808 passenger and cargo shipping operations conducted wherein 767 or 95% were completed in accordance with their Certificate of Public Convenience (CPC).

Out of the 767 operations completed under normal conditions, the reported movements were mostly in the Eastern Visayas Region at 25% and Bicol Region at 18%.

Meanwhile, 1% of the passenger and cargo shipping operations were cancelled, all due to the community quarantine measures imposed by the different local government units governing the ships' ports of destination. Mostly affected were operations in the Central Visayas and NCR Regions.

Twenty-seven (27) passenger ships or 6% encountered delays due to the additional measures adopted in view of COVID-19 such as temperature screening and inspections.

Lastly, no shipping operations were not completed at the time of reporting.

II. STATUS OF SHIPPING OPERATIONS BY CLASSIFICATION

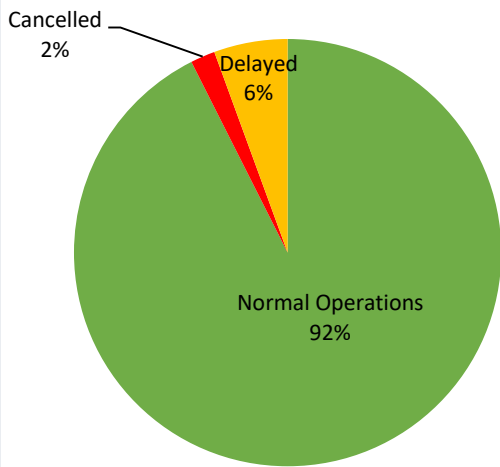
Region	Normal Operations		Cancelled		Delayed		Not Completed	
	Passenger	Cargo	Passenger	Cargo	Passenger	Cargo	Passenger	Cargo
NCR	3	18	-	-	13	4	-	-
I	-	-	-	-	-	-	-	-
II	-	-	-	-	-	-	-	-
III	-	1	-	-	-	-	-	-
IV-A	52	38	-	-	3	-	-	-
IV-B	31	27	-	-	1	-	-	-
V	103	22	-	-	-	-	-	-
VI	21	25	2	-	10	-	-	-
VII	18	34	7	-	-	-	-	-
VIII	78	112	-	-	-	-	-	-
IX	-	1	-	-	-	-	-	-
X	24	14	-	-	-	-	-	-
XI	-	2	-	-	-	-	-	-
XII	-	4	-	-	-	1	-	-
XIII	118	21	-	-	-	-	-	-
ARMM	-	-	-	-	-	-	-	-
Total	448	319	9	-	27	5	-	-

Amid the measures in place due to MGCQ, and GCQ, 319 out of 324 (98%) cargo ships still operated normally – are 28 bulk carrier, 7 chemical tanker, 50 container ships, 19 general cargo ships, 30 LCT ships, 27 oil tankers, 158 Roro cargo ships and 0 other cargo.

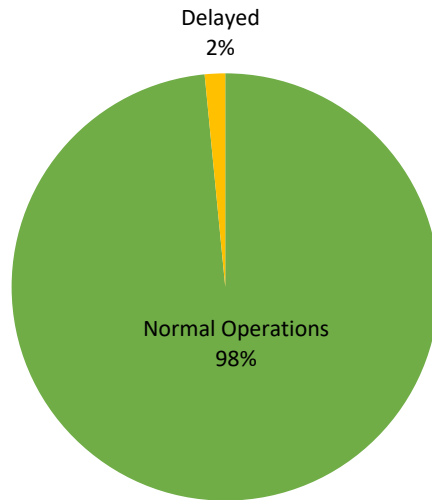
Four hundred forty eight (448) passenger ships completed their voyage – 255 conventional passenger ships, 166 RoPax ships and 25 fast craft ferry completed their operations but mostly only carried cargoes during their voyage.

Meanwhile out of the 484 passenger ships, 7% were affected by the measures adopted in view of COVID-19. These measures caused either the cancellation, delay, or uncompleted operations of 36 passenger ships.

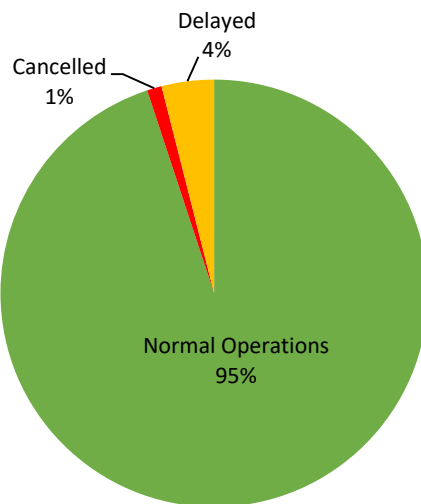
PASSENGER Ship Operations



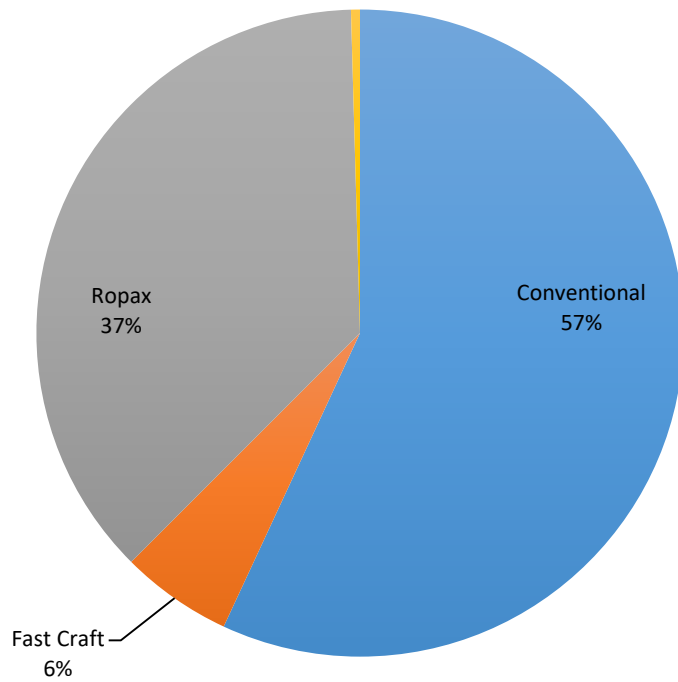
CARGO Ship Operations



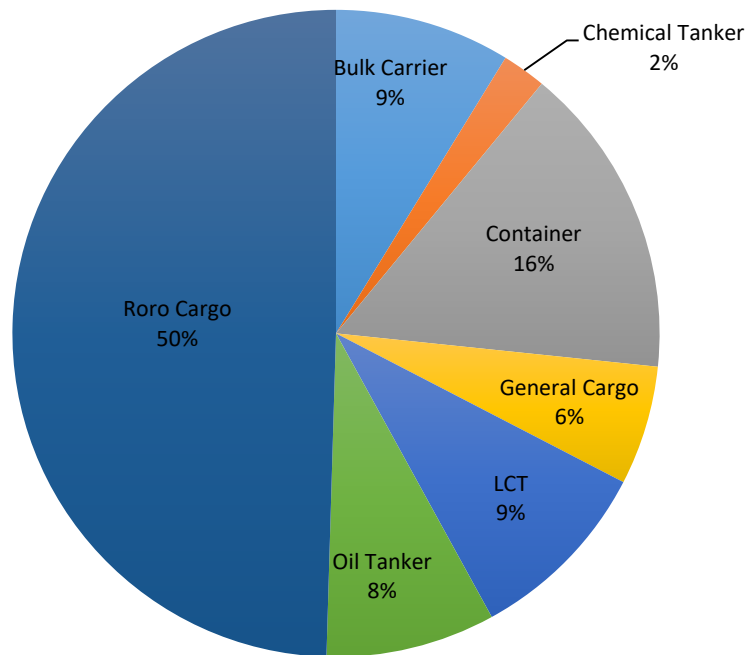
PASSENGER and CARGO Ship Operations



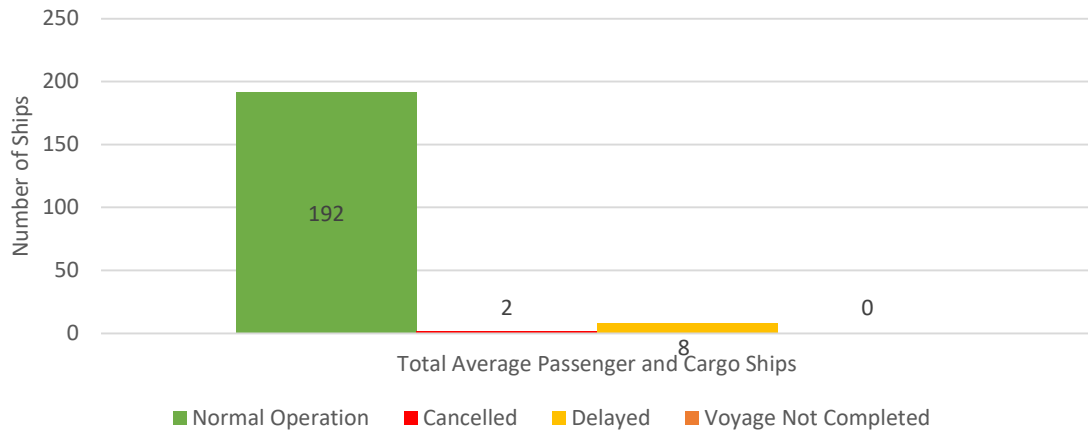
Passenger Ship Types under Normal Operations



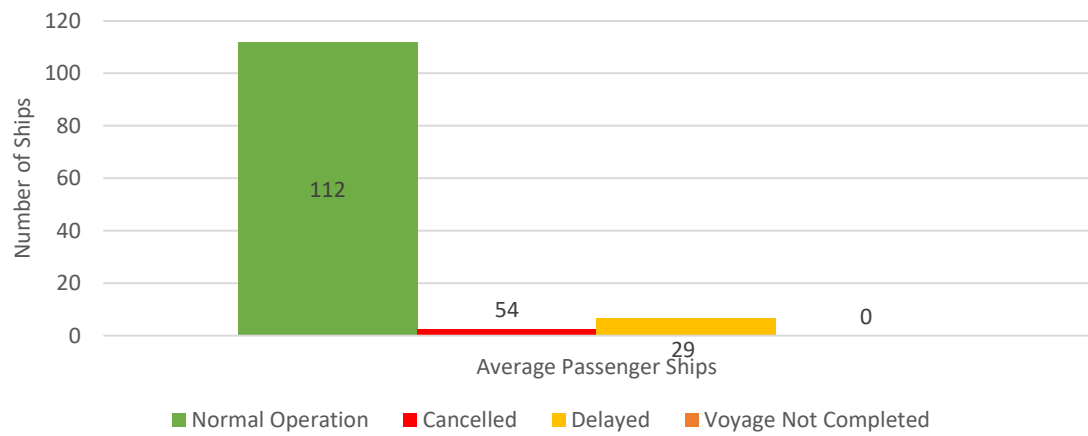
Cargo Ship Types under Normal Operations



Daily Average Passenger and Cargo Ship Operation



Daily Average Passenger Ship Operation



Daily Average Cargo Ship Operation

