



MARITIME INDUSTRY AUTHORITY
WEEKLY SUMMARY SITUATION REPORT - Summary 39
 Passenger and Cargo Shipping Operations on Dec. 11-17, 2020
 in areas under MGCQ and GCQ

Data generated on Dec. 11-17, 2020, 3:00 PM

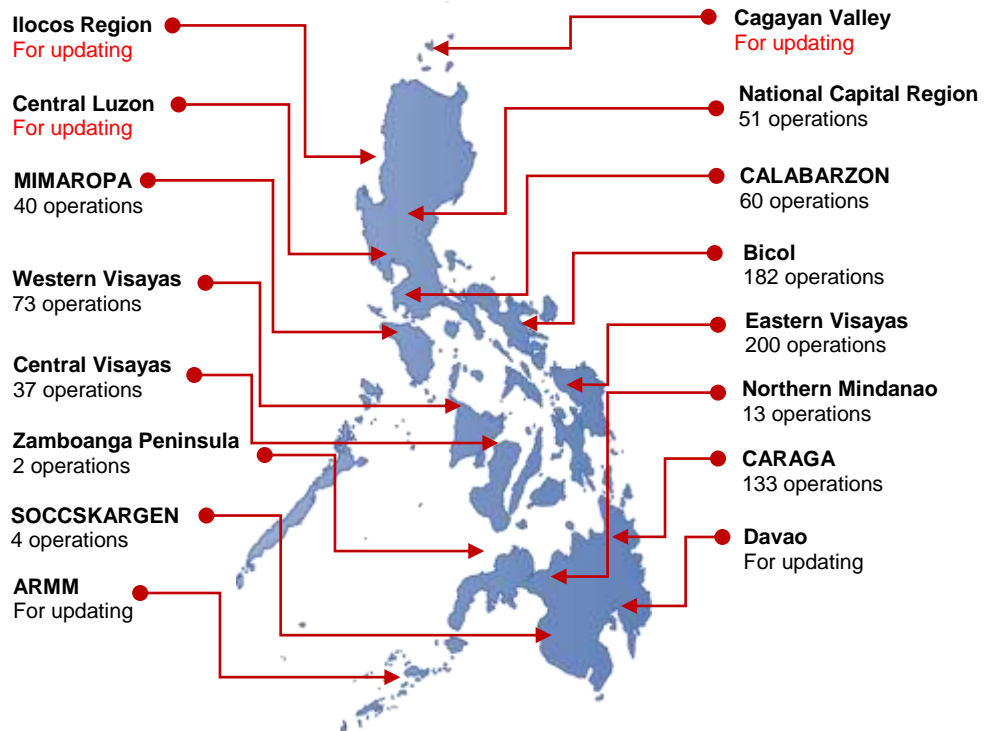
HIGHLIGHTS

- Ninety - two percent (92%) of passenger and cargo shipping operations were completed in accordance with the ships' CPC.
- Eight percent (8%) of the shipping operations were affected due to the measures implemented in view Code Red Sublevel 2 for the COVID-19.
- Operations of passenger ships were more affected compared to cargo ships. 94% of the cargo shipping operations were completed under normal conditions compared to passenger ships at 90%.
- Daily average passenger and cargo ship operations are 183 completed under normal conditions, 3 cancelled trips, 14 delayed and 0 not completed voyage.
- **With cargo shipping still operational, transport of goods amid MGCQ, and GCQ is assured.**

PASSENGER AND CARGO SHIPPING IN NUMBERS
 Dec. 11-17, 2020

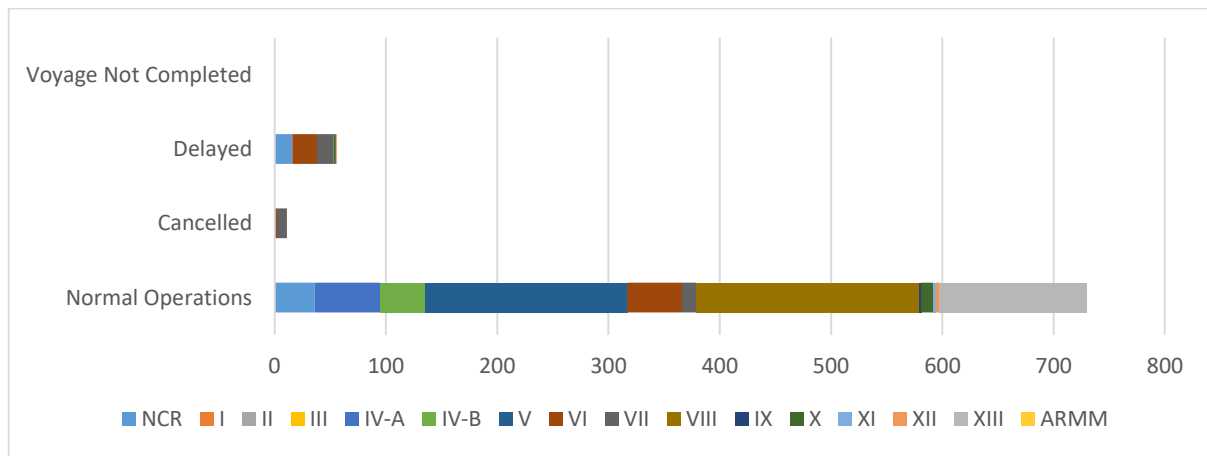
- 797** Shipping Operations Recorded
- 466** Passenger Ships Operated
- 331** Cargo Ships Operated
- 730** Ships Operated Normally
- 11** Operations Cancelled
- 56** Operations Delayed
- 0** Operation Uncompleted

**PASSENGER AND CARGO SHIPPING OPERATIONS IN THE PHILIPPINES
 IN AREAS UNDER MGCQ and GCQ**



Total of 797 Passenger and Cargo Shipping Operations

I. STATUS OF SHIPPING OPERATIONS NATIONWIDE



On Dec. 11-17, 2020, there were 797 passenger and cargo shipping operations conducted wherein 730 or 92% were completed in accordance with their Certificate of Public Convenience (CPC).

Out of the 730 operations completed under normal conditions, the reported movements were mostly in the Eastern Visayas Region at 27% and Bicol Visayas Region at 25%.

Meanwhile, 1% of the passenger and cargo shipping operations were cancelled, all due to the community quarantine measures imposed by the different local government units governing the ships' ports of destination. Mostly affected were operations in the Central Visayas and Eastern Visayas Regions.

Thirty-six (36) passenger ships or 8% encountered delays due to the additional measures adopted in view of COVID-19 such as temperature screening and inspections.

Lastly, no shipping operations were not completed at the time of reporting.

II. STATUS OF SHIPPING OPERATIONS BY CLASSIFICATION

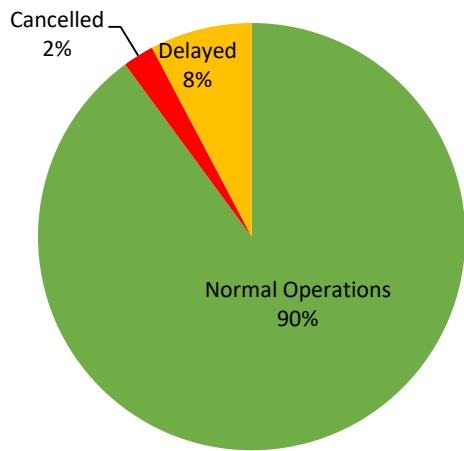
Region	Normal Operations		Cancelled		Delayed		Not Completed	
	Passenger	Cargo	Passenger	Cargo	Passenger	Cargo	Passenger	Cargo
NCR	4	32	-	-	13	2	-	-
I	-	-	-	-	-	-	-	-
II	-	-	-	-	-	-	-	-
III	-	-	-	-	-	-	-	-
IV-A	38	21	-	-	1	-	-	-
IV-B	21	19	-	-	-	-	-	-
V	135	47	-	-	-	-	-	-
VI	25	24	2	-	18	4	-	-
VII	7	6	9	-	2	13	-	-
VIII	81	119	-	-	-	-	-	-
IX	1	1	-	-	-	-	-	-
X	5	6	-	-	2	-	-	-
XI	-	2	-	-	-	-	-	-
XII	-	3	-	-	-	1	-	-
XIII	102	31	-	-	-	-	-	-
ARMM	-	-	-	-	-	-	-	-
Total	419	311	11	-	36	20	-	-

Amid the measures in place due to MGCQ, and GCQ, 311 out of 331 (94%) cargo ships still operated normally – are 25 bulk carrier, 5 chemical tanker, 69 container ships, 26 general cargo ships, 33 LCT ships, 3 oil tankers, 149 Roro cargo ships and 1 other cargo.

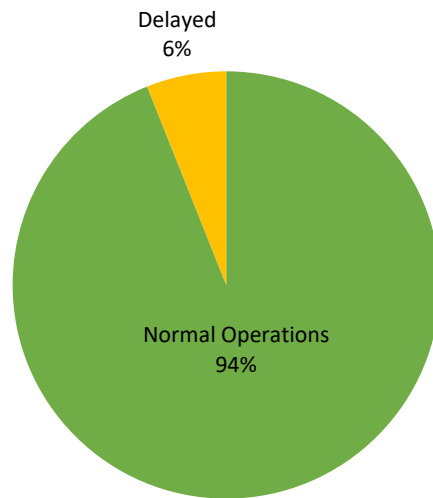
Four hundred nineteen (419) passenger ships completed their voyage – 230 conventional passenger ships, 153 RoPax ships and 36 fast craft ferry completed their operations but mostly only carried cargoes during their voyage.

Meanwhile out of the 466 passenger ships, 10% were affected by the measures adopted in view of COVID-19. These measures caused either the cancellation, delay, or uncompleted operations of 47 passenger ships.

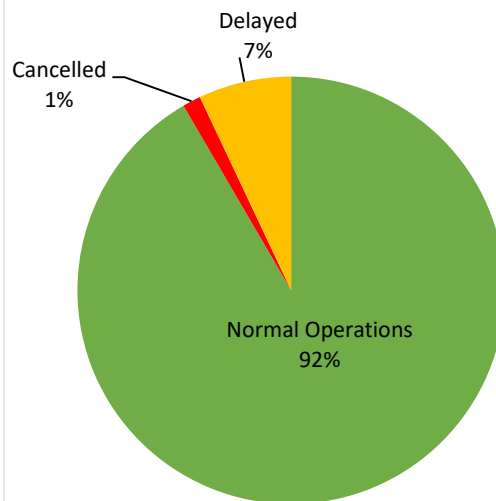
PASSENGER Ship Operations



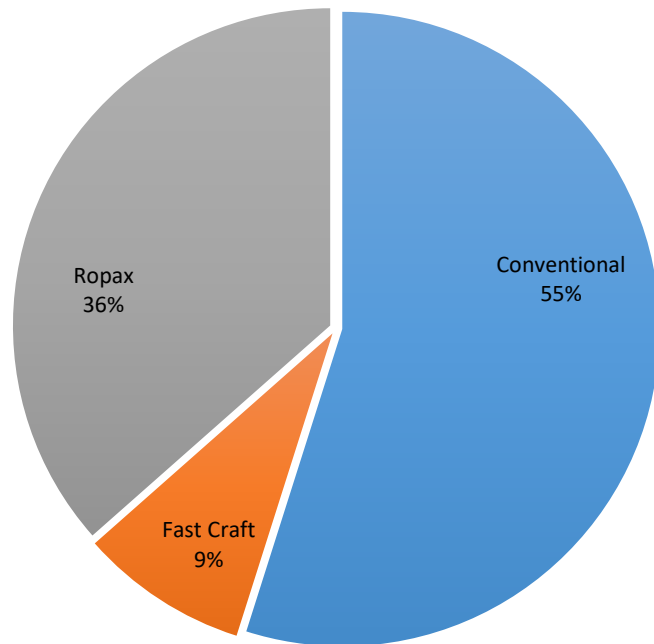
CARGO Ship Operations



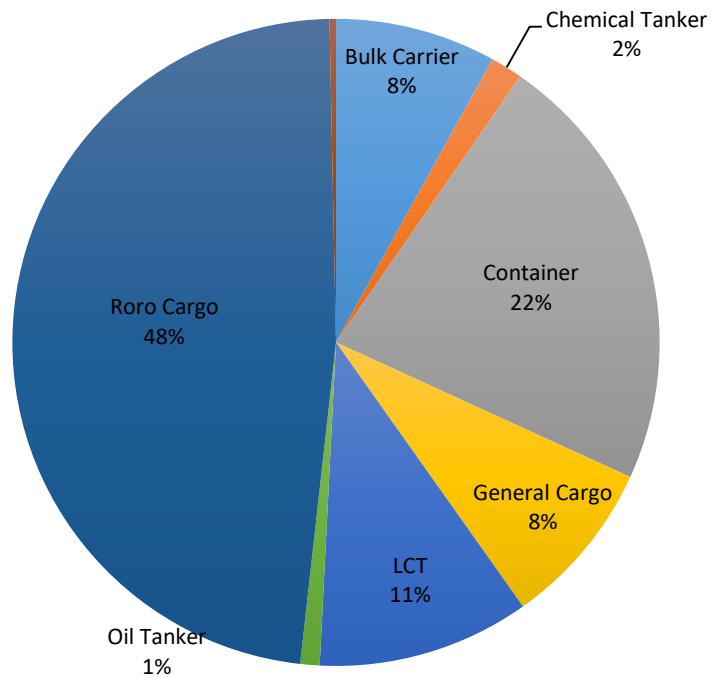
PASSENGER and CARGO Ship Operations



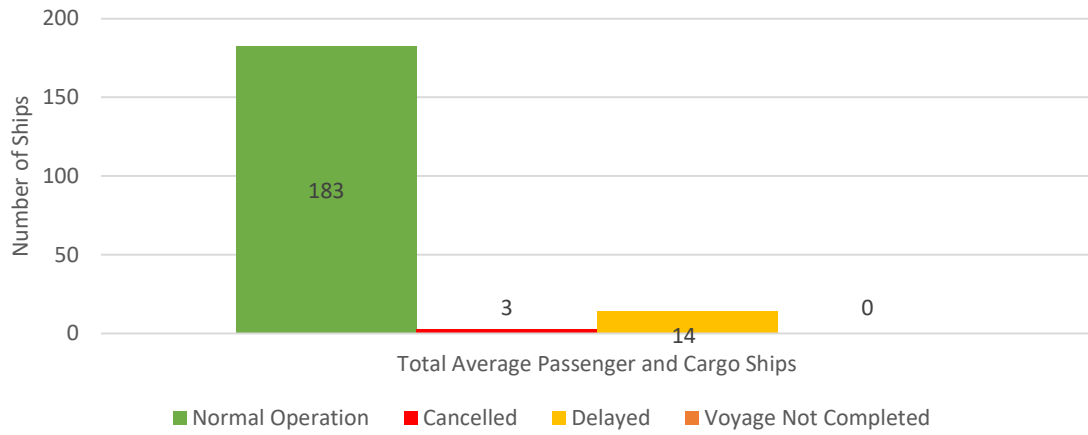
Passenger Ship Types under Normal Operations



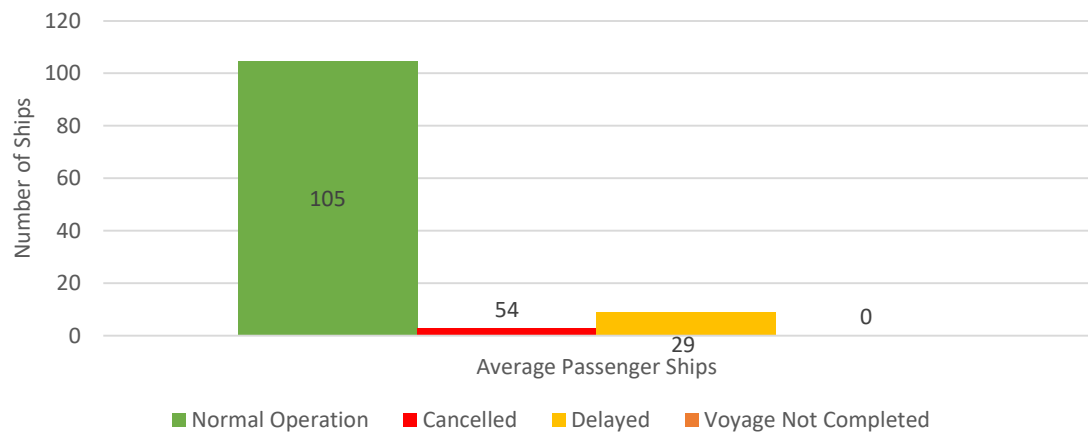
Cargo Ship Types under Normal Operations



Daily Average Passenger and Cargo Ship Operation



Daily Average Passenger Ship Operation



Daily Average Cargo Ship Operation

