



MARITIME INDUSTRY AUTHORITY
WEEKLY SUMMARY SITUATION REPORT - Summary 40
 Passenger and Cargo Shipping Operations on 18-24 Dec., 2020
 in areas under MGCQ and GCQ

Data generated on 18-24 Dec., 2020, 3:00 PM

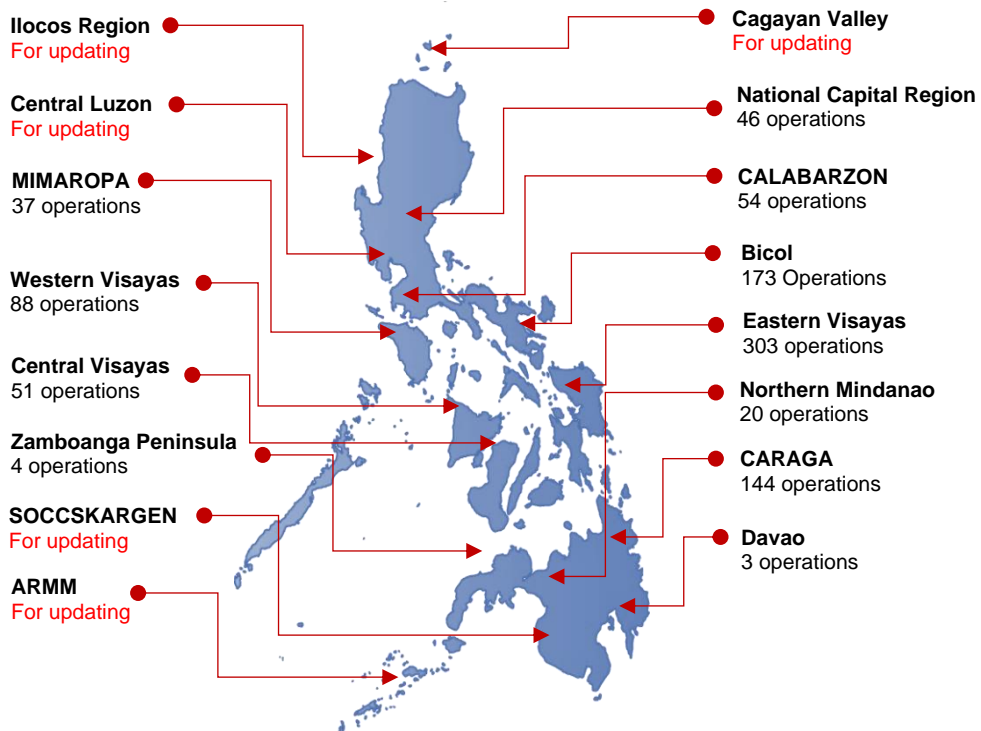
HIGHLIGHTS

- Ninety-four percent (94%) of passenger and cargo shipping operations were completed in accordance with the ships' CPC.
- Six percent (6%) of the shipping operations were affected due to the measures implemented in view Code Red Sublevel 2 for the COVID-19.
- Operations of passenger ships were more affected compared to cargo ships. 96% of the cargo shipping operations were completed under normal conditions compared to passenger ships at 93%.
- Daily average passenger and cargo ship operations are 217 completed under normal conditions, 3 cancelled trips, 12 delayed and 0 not completed voyage.
- **With cargo shipping still operational, transport of goods amid MGCQ, and GCQ is assured.**

PASSENGER AND CARGO SHIPPING IN NUMBERS
18-24 Dec., 2020

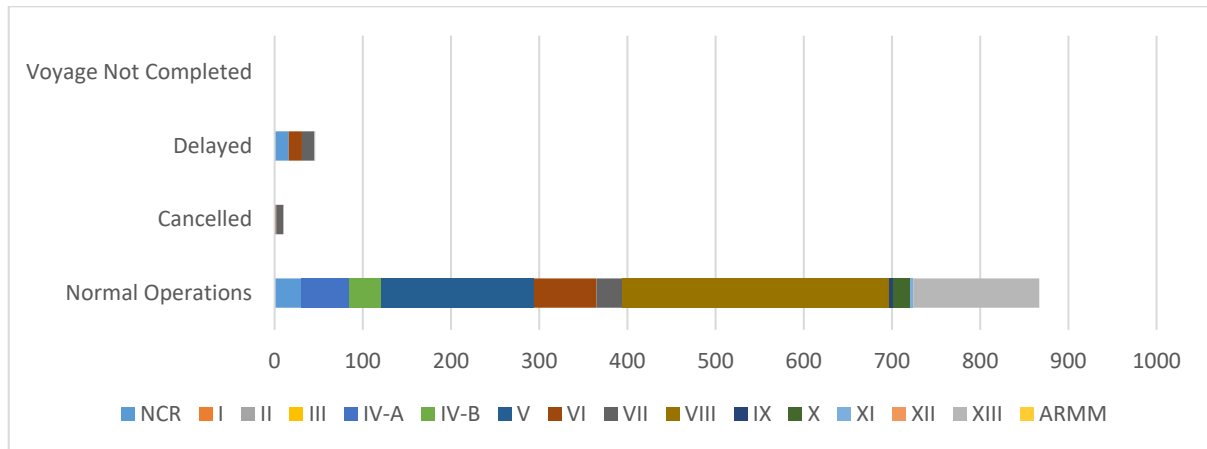
- 923** Shipping Operations Recorded
- 523** Passenger Ships Operated
- 400** Cargo Ships Operated
- 867** Ships Operated Normally
- 10** Operations Cancelled
- 46** Operations Delayed
- 0** Operation Uncompleted

**PASSENGER AND CARGO SHIPPING OPERATIONS IN THE PHILIPPINES
IN AREAS UNDER MGCQ and GCQ**



Total of 923 Passenger and Cargo Shipping Operations

I. STATUS OF SHIPPING OPERATIONS NATIONWIDE



On 18-24 Dec., 2020, there were 923 passenger and cargo shipping operations conducted wherein 867 or 94% were completed in accordance with their Certificate of Public Convenience (CPC).

Out of the 867 operations completed under normal conditions, the reported movements were mostly in the Eastern Visayas Region at 35% and Bicol Region at 20%.

Meanwhile, 1% of the passenger and cargo shipping operations were cancelled, all due to the community quarantine measures imposed by the different local government units governing the ships' ports of destination. Mostly affected were operations in the Central Visayas and Eastern Visayas Regions.

Twenty-nine (29) passenger ships or 6% encountered delays due to the additional measures adopted in view of COVID-19 such as temperature screening and inspections.

Lastly, no shipping operations were not completed at the time of reporting, as the respective ships were still underway.

II. STATUS OF SHIPPING OPERATIONS BY CLASSIFICATION

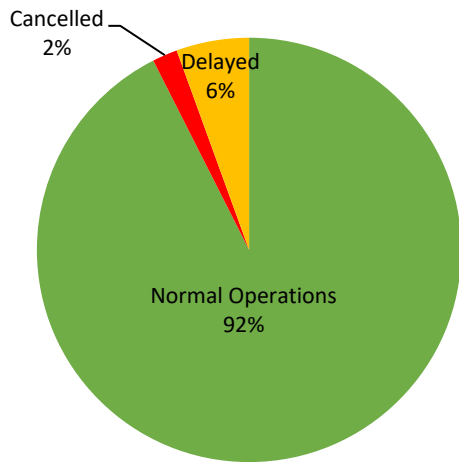
Region	Normal Operations		Cancelled		Delayed		Not Completed	
	Passenger	Cargo	Passenger	Cargo	Passenger	Cargo	Passenger	Cargo
NCR	2	28	-	-	12	4	-	-
I	-	-	-	-	-	-	-	-
II	-	-	-	-	-	-	-	-
III	-	-	-	-	-	-	-	-
IV-A	33	21	-	-	-	-	-	-
IV-B	19	18	-	-	-	-	-	-
V	128	45	-	-	-	-	-	-
VI	37	34	2	-	15	-	-	-
VII	15	14	8	-	1	13	-	-
VIII	135	168	-	-	-	-	-	-
IX	1	3	-	-	-	-	-	-
X	9	11	-	-	-	-	-	-
XI	-	3	-	-	-	-	-	-
XII	-	-	-	-	-	-	-	-
XIII	105	38	-	-	1	-	-	-
ARMM	-	-	-	-	-	-	-	-
Total	484	383	10	-	29	17	-	-

Amid the measures in place due to MGCQ, and GCQ, 383 out of 400 (96%) cargo ships still operated normally – are 42 bulk carrier, 2 chemical tanker, 70 container ships, 39 general cargo ships, 41 LCT ships, 2 oil tankers, 187 Roro cargo ships.

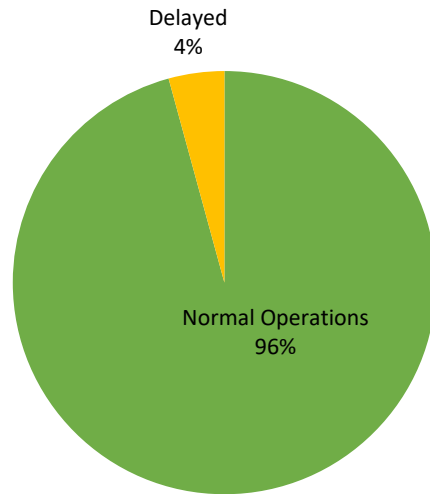
Four hundred-eighty four (484) passenger ships completed their voyage – 249 conventional passenger ships, 199 RoPax ships and 36 fast craft ferry completed their operations but mostly only carried cargoes during their voyage.

Meanwhile out of the 523 passenger ships, 7% were affected by the measures adopted in view of COVID-19. These measures caused either the cancellation, delay, or uncompleted operations of 39 passenger ships.

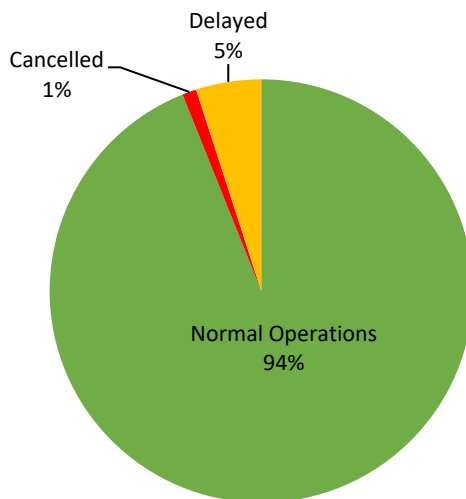
PASSENGER Ship Operations



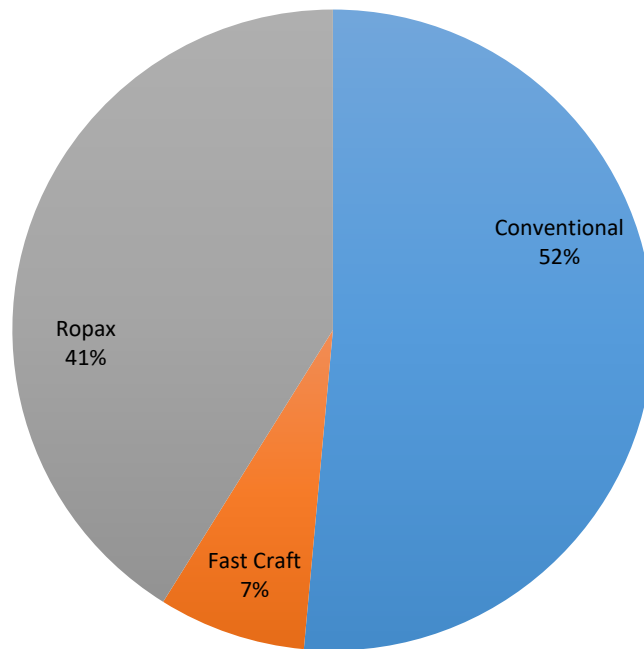
CARGO Ship Operations



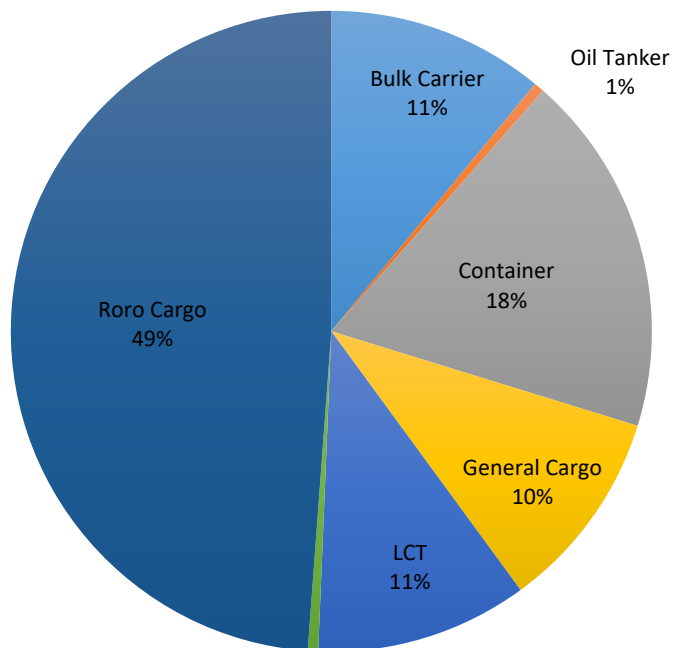
PASSENGER and CARGO Ship Operations



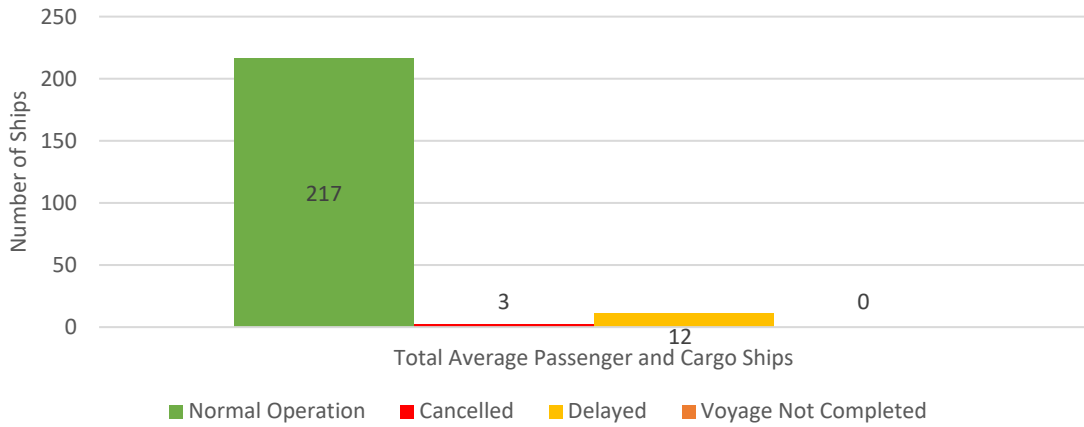
Passenger Ship Types under Normal Operations



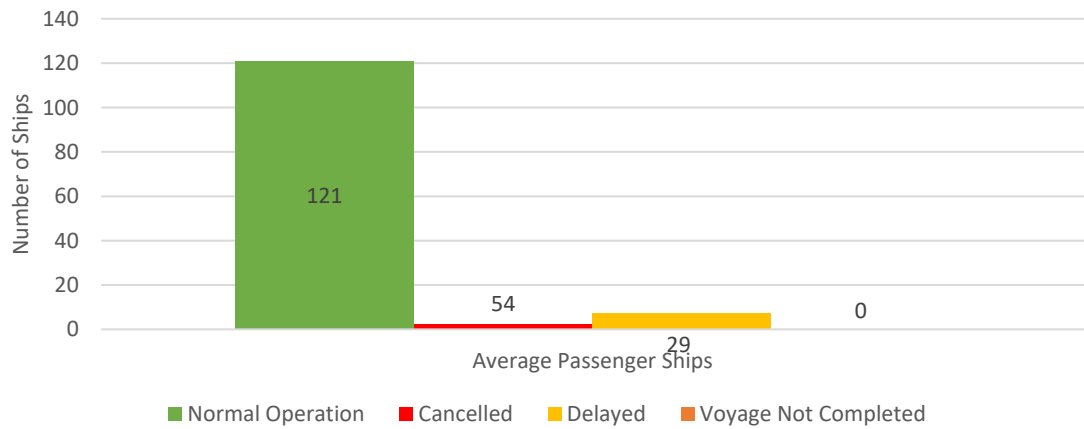
Cargo Ship Types under Normal Operations



Daily Average Passenger and Cargo Ship Operation



Daily Average Passenger Ship Operation



Daily Average Cargo Ship Operation

