



**MARITIME INDUSTRY AUTHORITY
WEEKLY SUMMARY SITUATION REPORT - 043**

Passenger and Cargo Shipping Operations on 12:00:00 AM
in areas under MGCQ and GCQ

Data generated on 12:00:00 AM, 3:00 PM

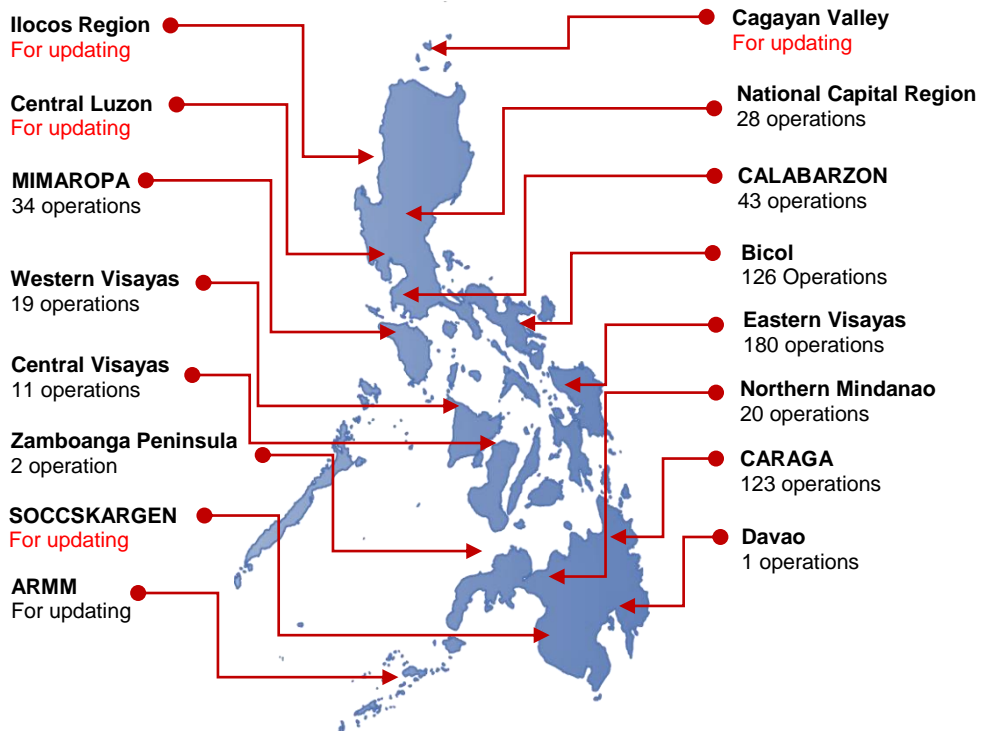
HIGHLIGHTS

- Ninety-five percent (95%) of passenger and cargo shipping operations were completed in accordance with the ships' CPC.
- Five percent (5%) of the shipping operations were affected due to the measures implemented in view Code Red Sublevel 2 for the COVID-19.
- Operations of passenger ships were more affected compared to cargo ships. 98% of the cargo shipping operations were completed under normal conditions compared to passenger ships at 94%.
- Daily average passenger and cargo ship operations are 140 completed under normal conditions, 2 cancelled trips, 5 delayed and 0 not completed voyage.
- **With cargo shipping still operational, transport of goods amid MGCQ, and GCQ is assured.**

PASSENGER AND CARGO SHIPPING IN NUMBERS
12:00:00 AM

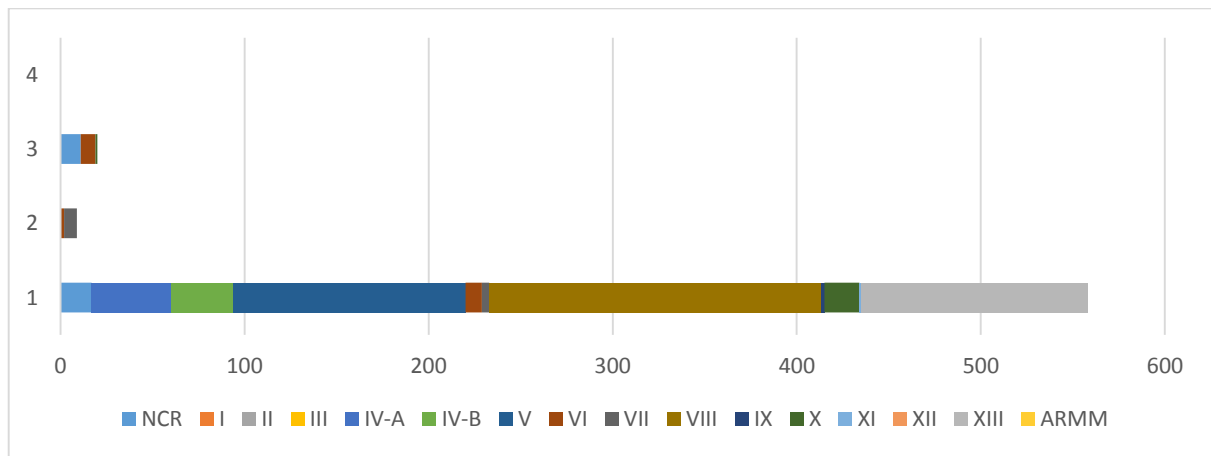
- 587** Shipping Operations Recorded
- 396** Passenger Ships Operated
- 191** Cargo Ships Operated
- 558** Ships Operated Normally
- 9** Operations Cancelled
- 20** Operations Delayed
- 0** Operation Uncompleted

**PASSENGER AND CARGO SHIPPING OPERATIONS IN THE PHILIPPINES
IN AREAS UNDER MGCQ and GCQ**



Total of 587 Passenger and Cargo Shipping Operations

I. STATUS OF SHIPPING OPERATIONS NATIONWIDE



On 12:00:00 AM, there were 587 passenger and cargo shipping operations conducted wherein 558 or 95% were completed in accordance with their Certificate of Public Convenience (CPC).

Out of the 558 operations completed under normal conditions, the reported movements were mostly in the Eastern Visayas Region at 32% and Bicol Region at 23%.

Meanwhile, 2% of the passenger and cargo shipping operations were cancelled, all due to the community quarantine measures imposed by the different local government units governing the ships' ports of destination. Mostly affected were operations in the Central Visayas and Western Visayas Regions.

Sixteen (16) passenger ships or 4% encountered delays due to the additional measures adopted in view of COVID-19 such as temperature screening and inspections.

Lastly, no shipping operations were not completed at the time of reporting, as the respective ships were still underway.

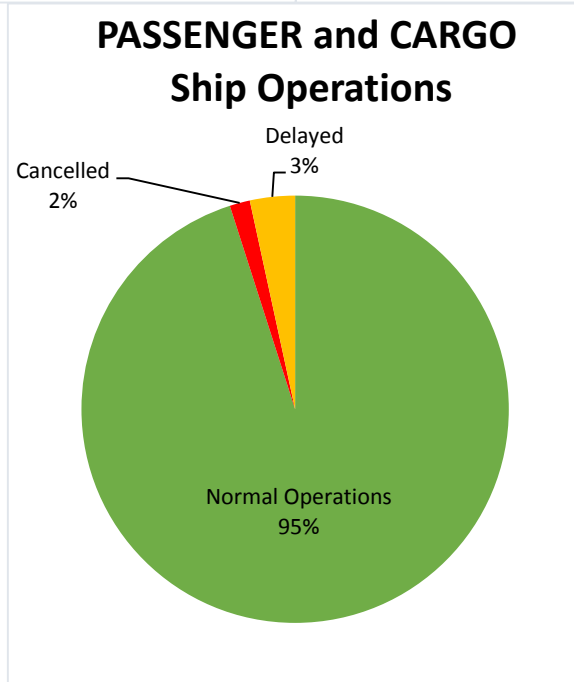
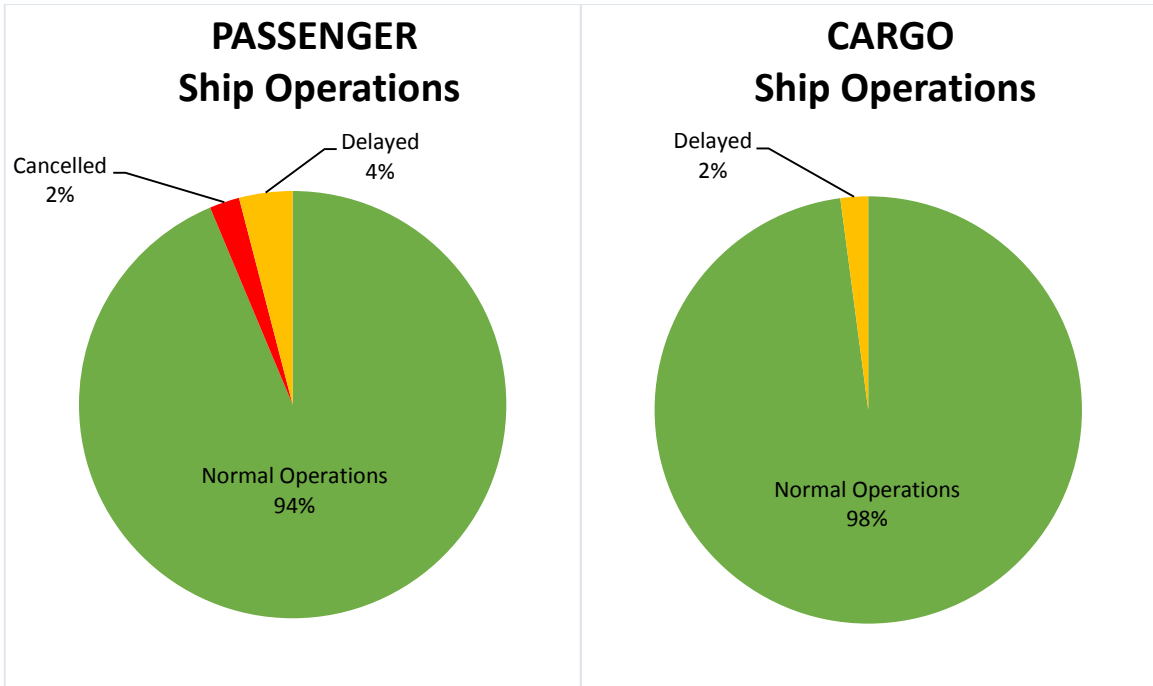
II. STATUS OF SHIPPING OPERATIONS BY CLASSIFICATION

Region	Normal Operations		Cancelled		Delayed		Not Completed	
	Passenger	Cargo	Passenger	Cargo	Passenger	Cargo	Passenger	Cargo
NCR	4	13	-	-	7	4	-	-
I	-	-	-	-	-	-	-	-
II	-	-	-	-	-	-	-	-
III	-	-	-	-	-	-	-	-
IV-A	26	17	-	-	-	-	-	-
IV-B	17	17	-	-	-	-	-	-
V	111	15	-	-	-	-	-	-
VI	8	1	2	-	8	-	-	-
VII	3	1	7	-	-	-	-	-
VIII	76	104	-	-	-	-	-	-
IX	-	2	-	-	-	-	-	-
X	15	4	-	-	1	-	-	-
XI	-	1	-	-	-	-	-	-
XII	-	-	-	-	-	-	-	-
XIII	111	12	-	-	-	-	-	-
ARMM	-	-	-	-	-	-	-	-
Total	371	187	9	-	16	4	-	-

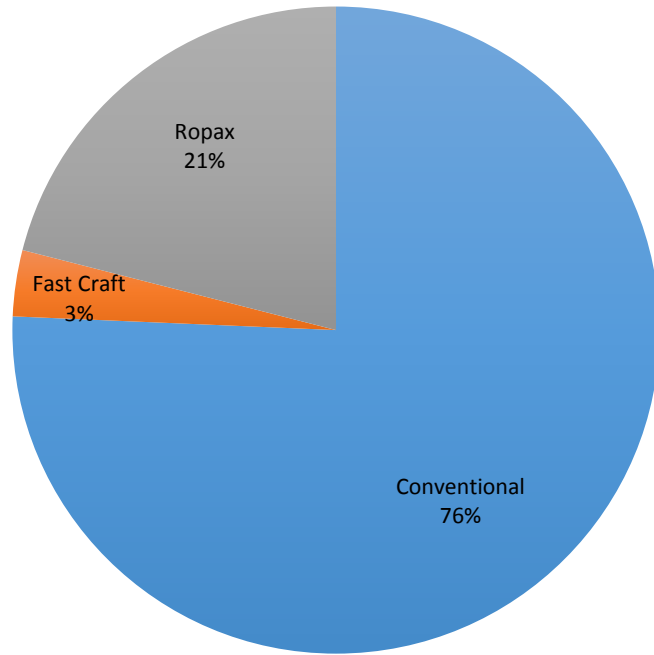
Amid the measures in place due to MGCQ, and GCQ, 187 out of 191 (98%) cargo ships still operated normally – are 35 bulk carrier, 23 container ships, 18 general cargo ships, 18 LCT ships, 4 oil tankers, 83 Roro cargo ships.

Three hundred seventy-one (371) passenger ships completed their voyage – 252 conventional passenger ships, 70 RoPax ships and 11 fast craft ferry completed their operations but mostly only carried cargoes during their voyage.

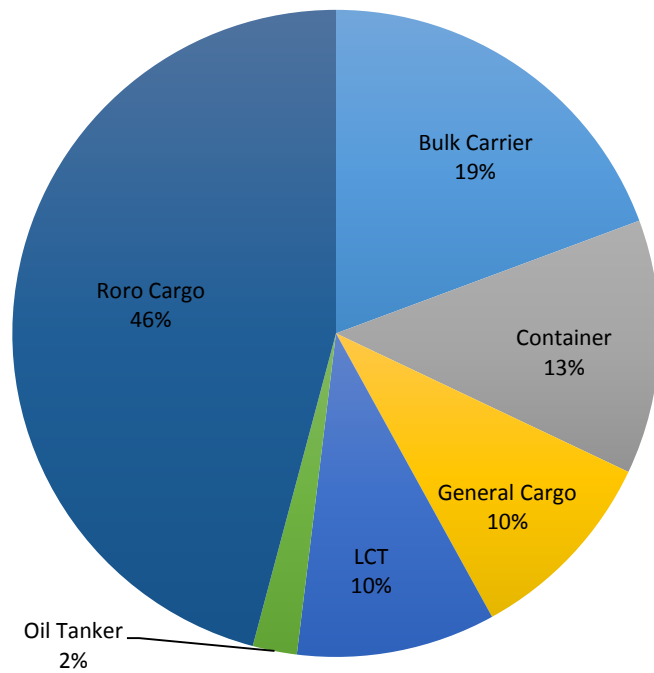
Meanwhile out of the 396 passenger ships, 6% were affected by the measures adopted in view of COVID-19. These measures caused either the cancellation, delay, or uncompleted operations of 25 passenger ships.



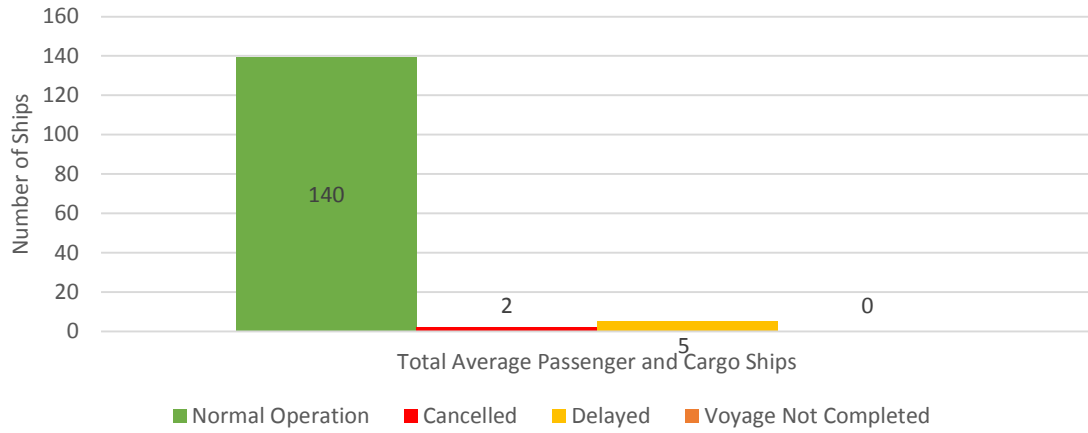
Passenger Ship Types under Normal Operations



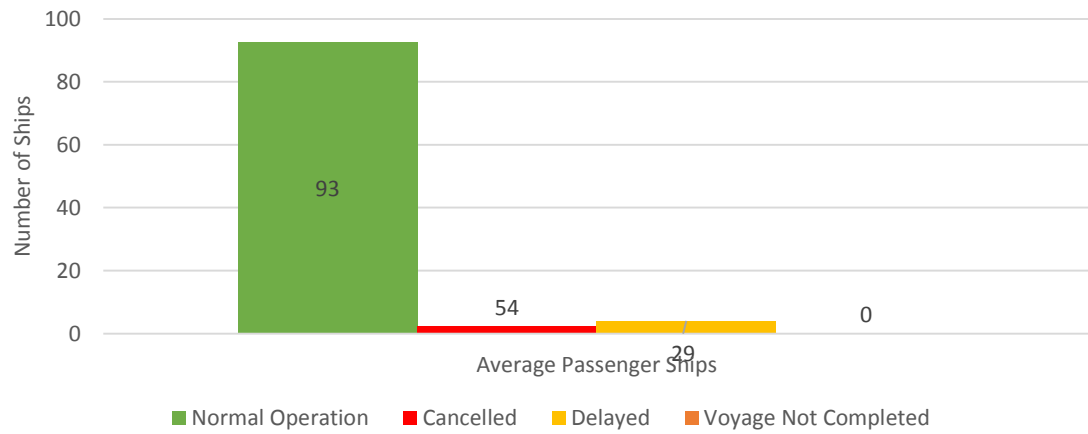
Cargo Ship Types under Normal Operations



Daily Average Passenger and Cargo Ship Operation



Daily Average Passenger Ship Operation



Daily Average Cargo Ship Operation

