



MARITIME INDUSTRY AUTHORITY
WEEKLY SUMMARY SITUATION REPORT - Summary 48
 Passenger and Cargo Shipping Operations on Feb. 12-18, 2021
 in areas under MGCQ and GCQ
Data generated on Feb. 12-18, 2021, 3:00 PM

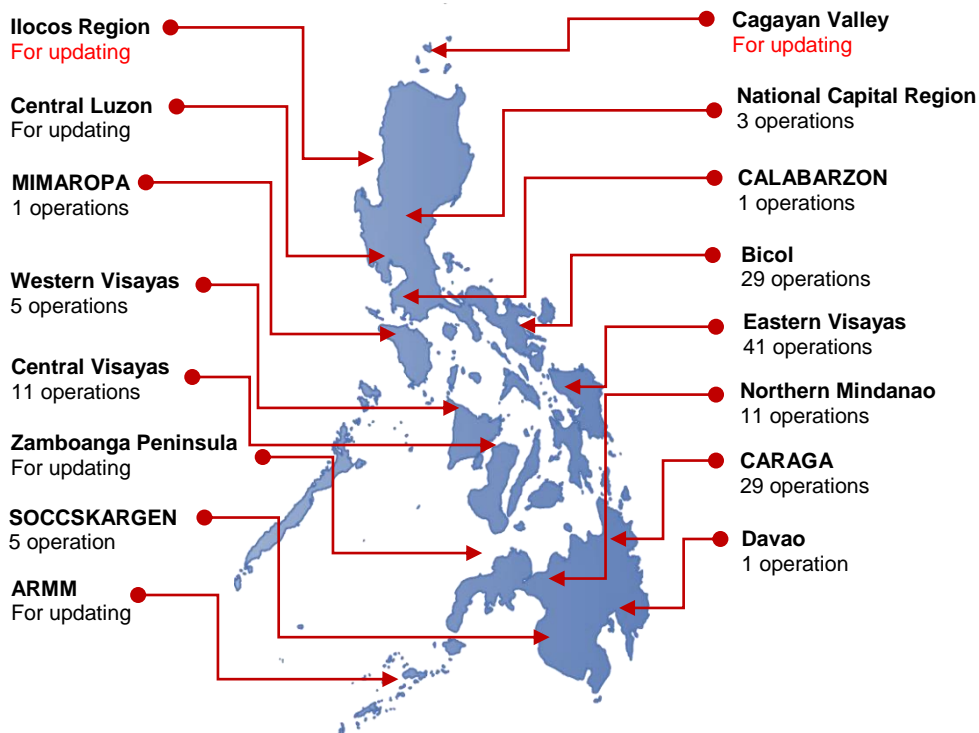
HIGHLIGHTS

- Ninety – five percent (95%) of passenger and cargo shipping operations were completed in accordance with the ships' CPC.
- Five percent (5%) of the shipping operations were affected due to the measures implemented in view Code Red Sublevel 2 for the COVID-19.
- Operations of passenger ships were more affected compared to cargo ships. 97% of the cargo shipping operations were completed under normal conditions compared to passenger ships at 94%.
- Daily average passenger and cargo ship operations are 141 completed under normal conditions, 2 cancelled trips, 6 delayed and 0 not completed voyage.
- **With cargo shipping still operational, transport of goods amid MGCQ, and GCQ is assured.**

PASSENGER AND CARGO SHIPPING IN NUMBERS
 Feb. 12-18, 2021

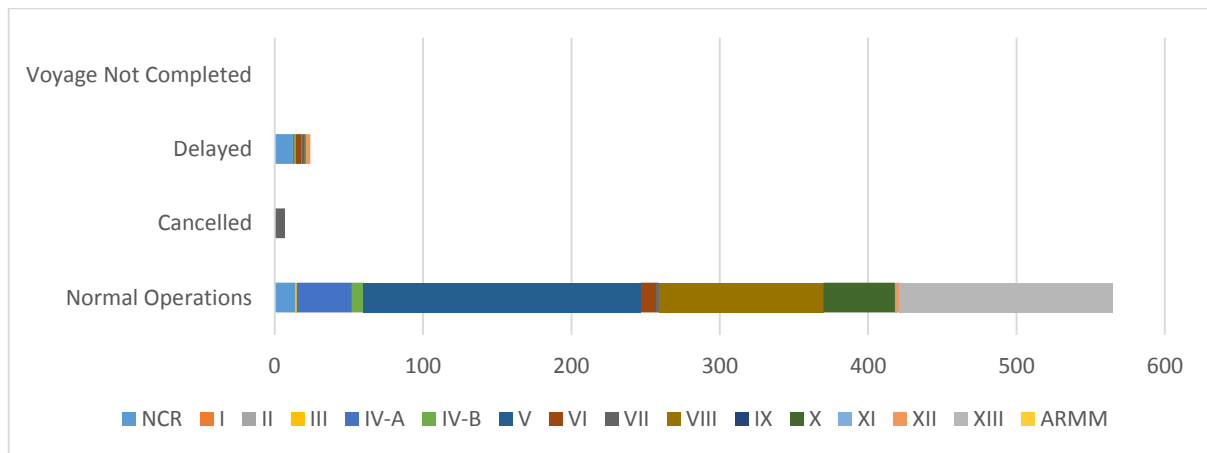
- 596** Shipping Operations Recorded
- 412** Passenger Ships Operated
- 184** Cargo Ships Operated
- 565** Ships Operated Normally
- 7** Operations Cancelled
- 24** Operations Delayed
- 0** Operation Uncompleted

**PASSENGER AND CARGO SHIPPING OPERATIONS IN THE PHILIPPINES
 IN AREAS UNDER MGCQ and GCQ**



Total of 596 Passenger and Cargo Shipping Operations

I. STATUS OF SHIPPING OPERATIONS NATIONWIDE



On Feb. 12-18, 2021, there were 596 passenger and cargo shipping operations conducted wherein 565 or 95% were completed in accordance with their Certificate of Public Convenience (CPC).

Out of the 565 operations completed under normal conditions, the reported movements were mostly in the Bicol Region at 33% and CARAGA Region at 25%.

Meanwhile, 1% of the passenger and cargo shipping operations were cancelled, all due to the community quarantine measures imposed by the different local government units governing the ships' ports of destination. Mostly affected were operations in the Central Visayas Region.

Eighteen (18) passenger ships or 4% encountered delays due to the additional measures adopted in view of COVID-19 such as temperature screening and inspections.

Lastly, no shipping operations were not completed at the time of reporting, as the respective ships were still underway.

II. STATUS OF SHIPPING OPERATIONS BY CLASSIFICATION

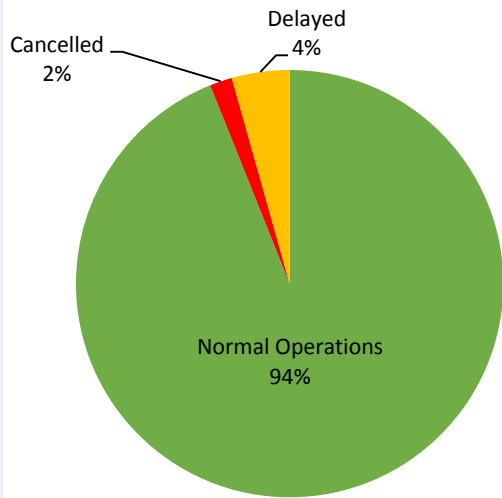
Region	Normal Operations		Cancelled		Delayed		Not Completed	
	Passenger	Cargo	Passenger	Cargo	Passenger	Cargo	Passenger	Cargo
NCR	7	7	-	-	9	3	-	-
I	-	-	-	-	-	-	-	-
II	-	-	-	-	-	-	-	-
III	-	1	-	-	-	-	-	-
IV-A	36	1	-	-	1	-	-	-
IV-B	6	2	-	-	1	-	-	-
V	145	42	-	-	-	-	-	-
VI	5	5	-	-	4	-	-	-
VII	1	1	7	-	2	-	-	-
VIII	35	76	-	-	-	-	-	-
IX	-	-	-	-	-	-	-	-
X	43	5	-	-	1	-	-	-
XI	-	1	-	-	-	-	-	-
XII	-	2	-	-	-	3	-	-
XIII	109	35	-	-	-	-	-	-
ARMM	-	-	-	-	-	-	-	-
Total	387	178	7	-	18	6	-	-

Amid the measures in place due to MGCQ, and GCQ, 178 out of 184 (97%) cargo ships still operated normally – are 31 bulk carrier, 21 container ships, 15 general cargo ships, 29 LCT ships, 1 oil tankers, 69 Roro cargo ships and 12 other cargo.

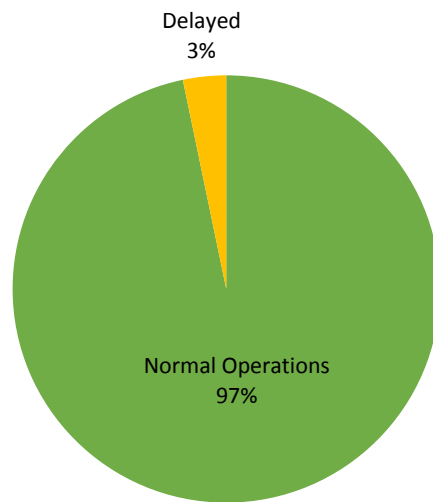
Three hundred eighty seven (387) passenger ships completed their voyage – 318 conventional passenger ships, 47 RoPax ships and 22 fast craft ferry completed their operations but mostly only carried cargoes during their voyage.

Meanwhile out of the 412 passenger ships, 6% were affected by the measures adopted in view of COVID-19. These measures caused either the cancellation, delay, or uncompleted operations of 25 passenger ships.

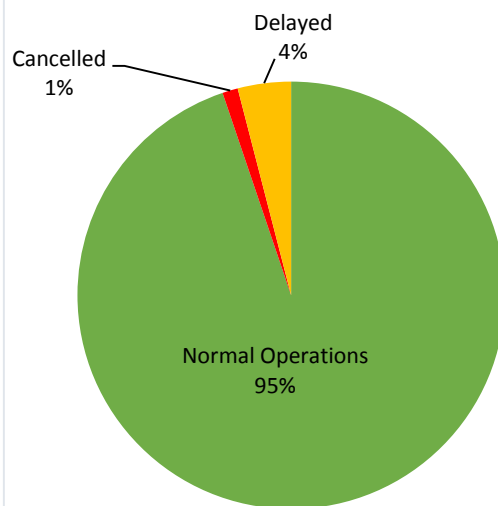
PASSENGER Ship Operations



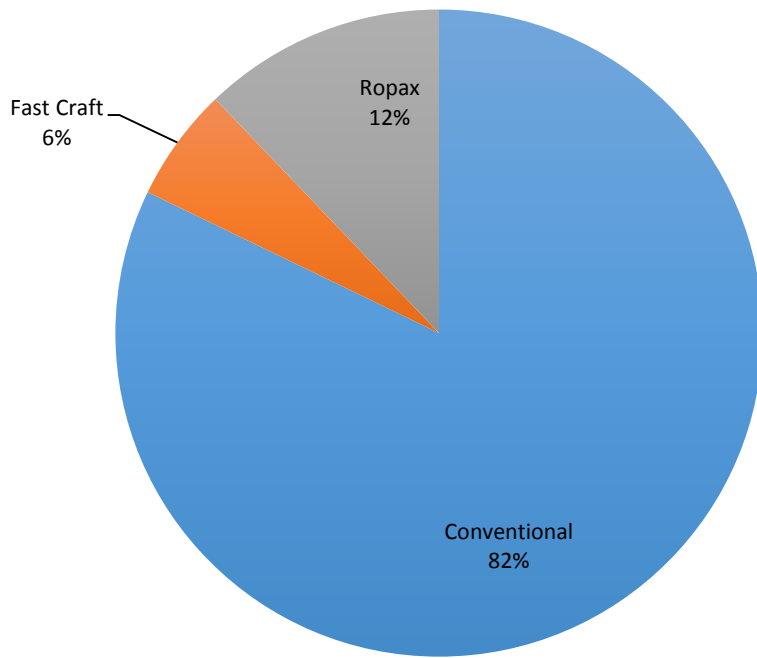
CARGO Ship Operations



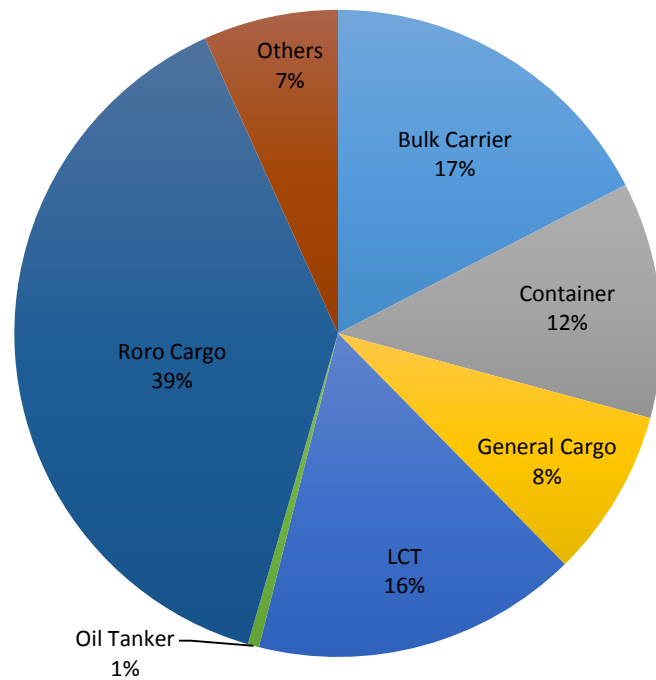
PASSENGER and CARGO Ship Operations



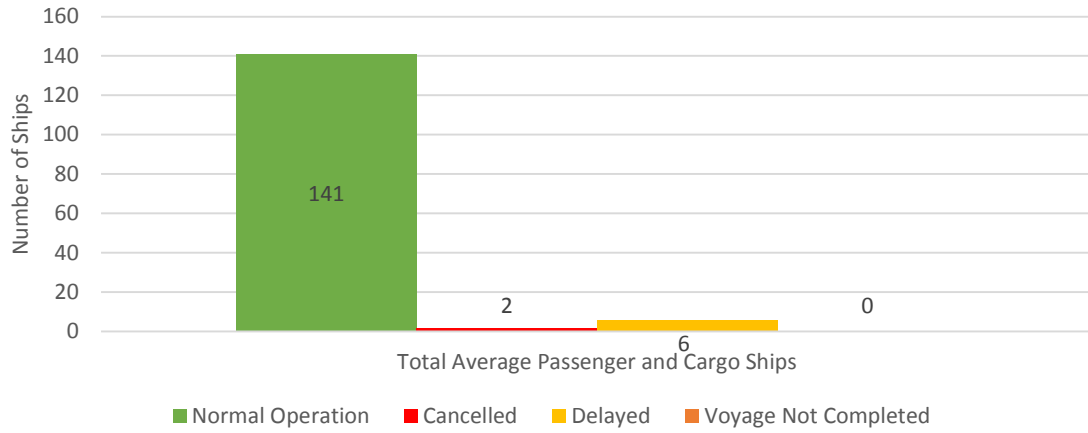
Passenger Ship Types under Normal Operations



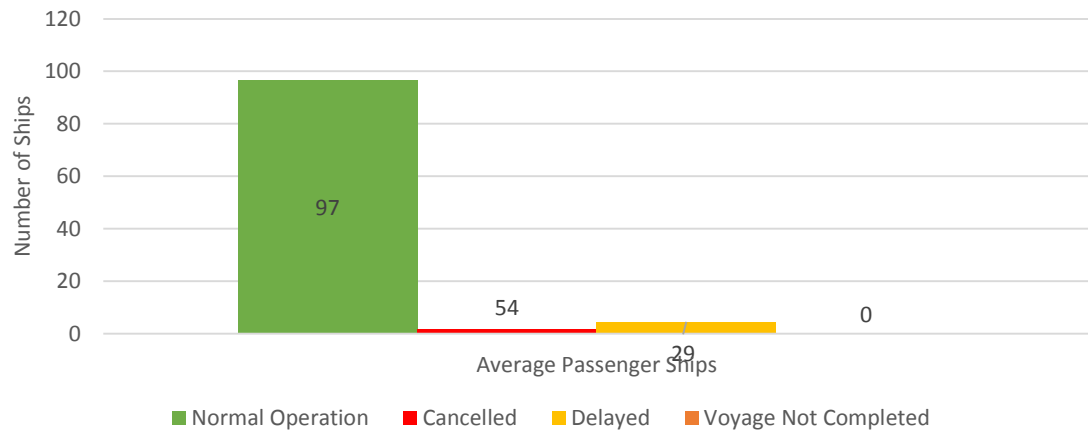
Cargo Ship Types under Normal Operations



Daily Average Passenger and Cargo Ship Operation



Daily Average Passenger Ship Operation



Daily Average Cargo Ship Operation

