



MARITIME INDUSTRY AUTHORITY
WEEKLY SUMMARY SITUATION REPORT - Summary 49
 Passenger and Cargo Shipping Operations on Feb 19-25, 2021
 in areas under MGCQ and GCQ

Data generated on Feb 19-25, 2021, 3:00 PM

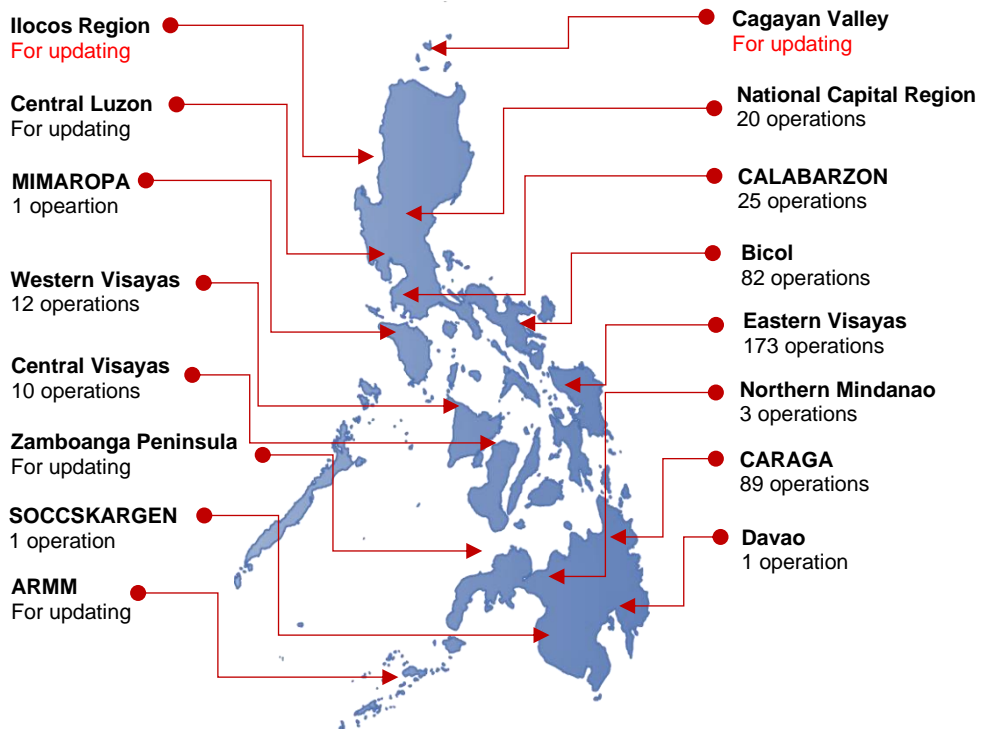
HIGHLIGHTS

- Ninety – three percent (93%) of passenger and cargo shipping operations were completed in accordance with the ships' CPC.
- Seven percent (7%) of the shipping operations were affected due to the measures implemented in view Code Red Sublevel 2 for the COVID-19.
- Operations of passenger ships were more affected compared to cargo ships. 96% of the cargo shipping operations were completed under normal conditions compared to passenger ships at 92%.
- Daily average passenger and cargo ship operations are 97 completed under normal conditions, 2 cancelled trips, 5 delayed and 0 not completed voyage.
- **With cargo shipping still operational, transport of goods amid MGCQ, and GCQ is assured.**

PASSENGER AND CARGO SHIPPING IN NUMBERS
 Feb 19-25, 2021

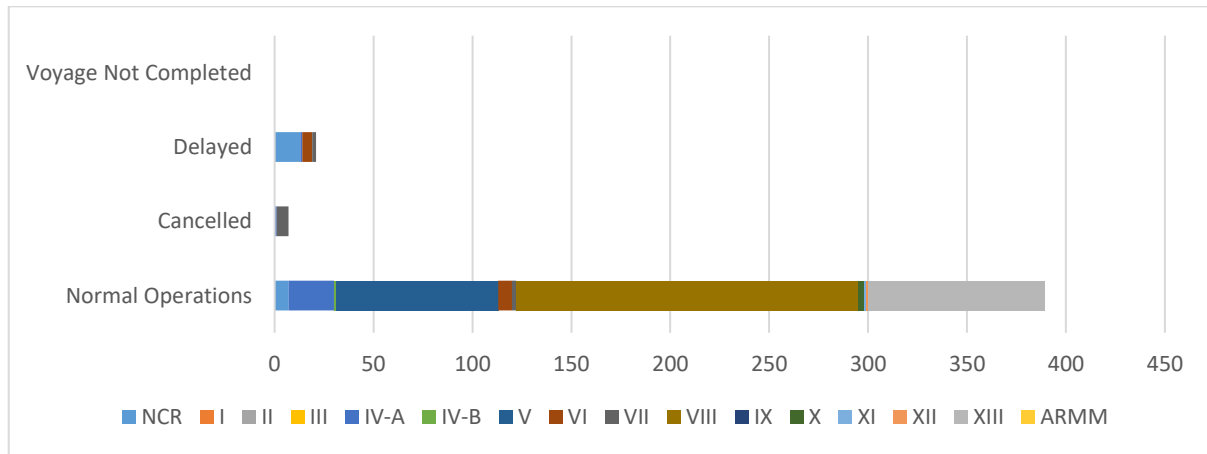
- 417** Shipping Operations Recorded
- 265** Passenger Ships Operated
- 152** Cargo Ships Operated
- 389** Ships Operated Normally
- 7** Operations Cancelled
- 21** Operations Delayed
- 0** Operation Uncompleted

**PASSENGER AND CARGO SHIPPING OPERATIONS IN THE PHILIPPINES
 IN AREAS UNDER MGCQ and GCQ**



Total of 417 Passenger and Cargo Shipping Operations

I. STATUS OF SHIPPING OPERATIONS NATIONWIDE



On Feb 19-25, 2021, there were 417 passenger and cargo shipping operations conducted wherein 389 or 93% were completed in accordance with their Certificate of Public Convenience (CPC).

Out of the 389 operations completed under normal conditions, the reported movements were mostly in the Eastern Visayas Region at 44% and CARAGA Region at 23%.

Meanwhile, 2% of the passenger and cargo shipping operations were cancelled, all due to the community quarantine measures imposed by the different local government units governing the ships' ports of destination. Mostly affected were operations in the Central Visayas Region.

Fifteen (15) passenger ships or 6% encountered delays due to the additional measures adopted in view of COVID-19 such as temperature screening and inspections.

Lastly, no shipping operations were not completed at the time of reporting, as the respective ships were still underway.

II. STATUS OF SHIPPING OPERATIONS BY CLASSIFICATION

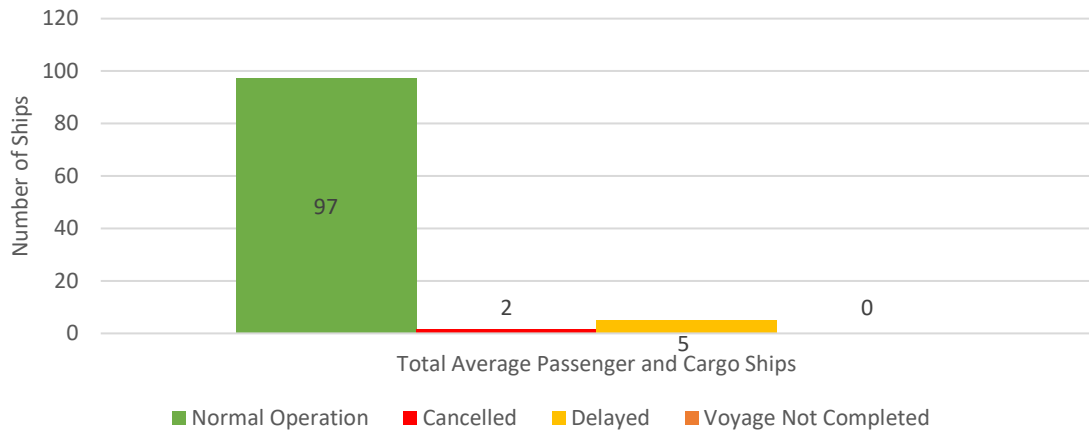
Region	Normal Operations		Cancelled		Delayed		Not Completed	
	Passenger	Cargo	Passenger	Cargo	Passenger	Cargo	Passenger	Cargo
NCR	4	3	-	-	7	6	-	-
I	-	-	-	-	-	-	-	-
II	-	-	-	-	-	-	-	-
III	-	-	-	-	-	-	-	-
IV-A	14	9	1	-	1	-	-	-
IV-B	1	-	-	-	-	-	-	-
V	67	15	-	-	-	-	-	-
VI	5	2	-	-	5	-	-	-
VII	2	-	6	-	2	-	-	-
VIII	79	94	-	-	-	-	-	-
IX	-	-	-	-	-	-	-	-
X	-	3	-	-	-	-	-	-
XI	-	1	-	-	-	-	-	-
XII	-	1	-	-	-	-	-	-
XIII	71	18	-	-	-	-	-	-
ARMM	-	-	-	-	-	-	-	-
Total	243	146	7	-	15	6	-	-

Amid the measures in place due to MGCQ, and GCQ, 146 out of 152 (96%) cargo ships still operated normally – are 31 bulk carrier, 16 container ships, 12 general cargo ships, 24 LCT ships, , 57 Roro cargo ships and 6 other cargo.

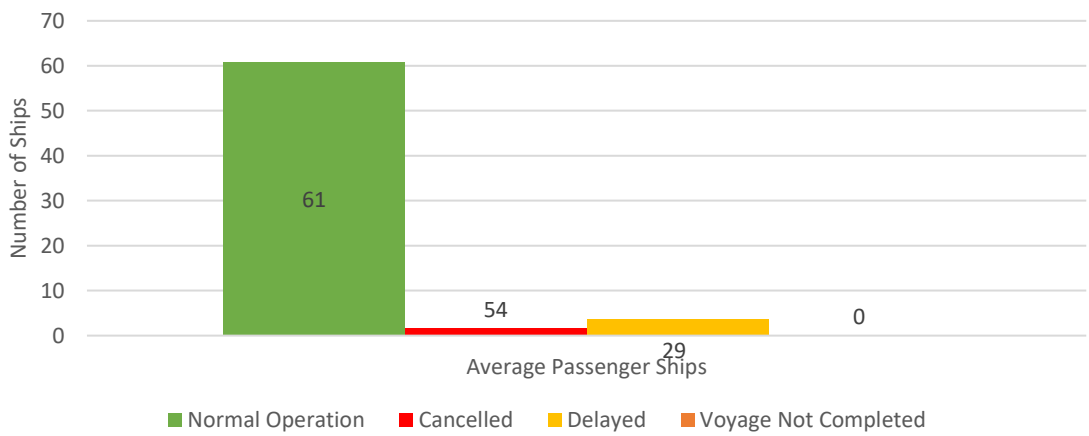
Three hundred and forty-three (243) passenger ships completed their voyage – 194 conventional passenger ships, 36 RoPax ships and 13 fast craft ferry completed their operations but mostly only carried cargoes during their voyage.

Meanwhile out of the 265 passenger ships, 8% were affected by the measures adopted in view of COVID-19. These measures caused either the cancellation, delay, or uncompleted operations of 22 passenger ships.

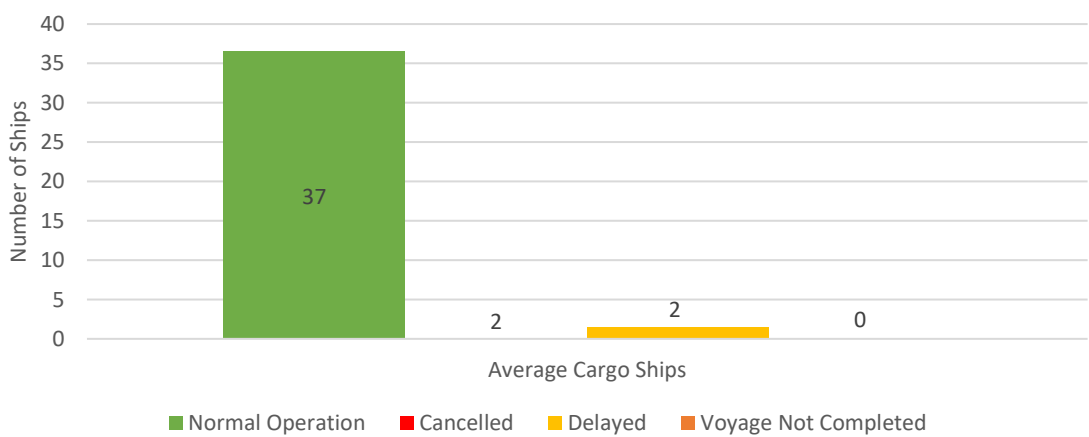
Daily Average Passenger and Cargo Ship Operation



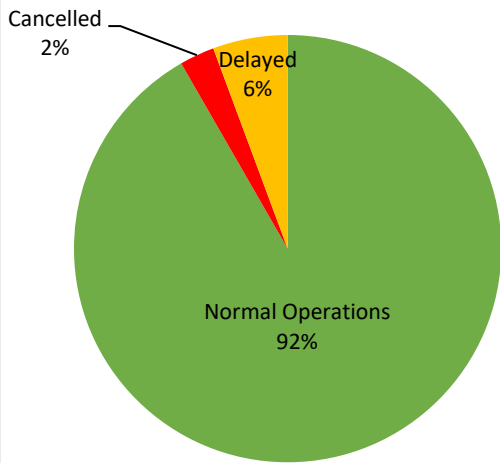
Daily Average Passenger Ship Operation



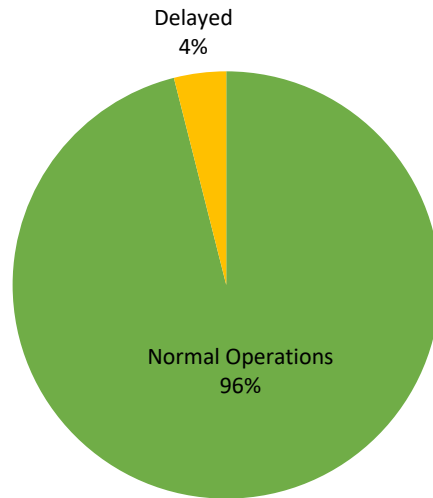
Daily Average Cargo Ship Operation



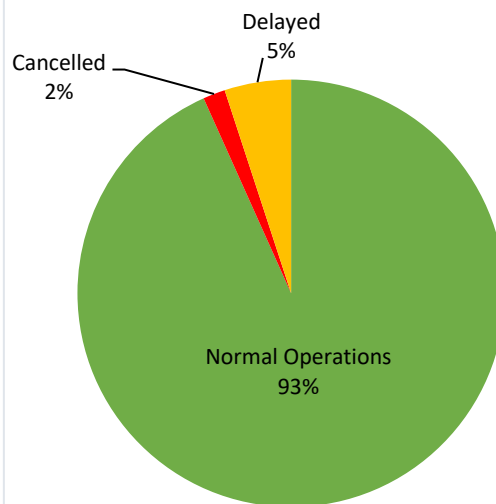
PASSENGER Ship Operations



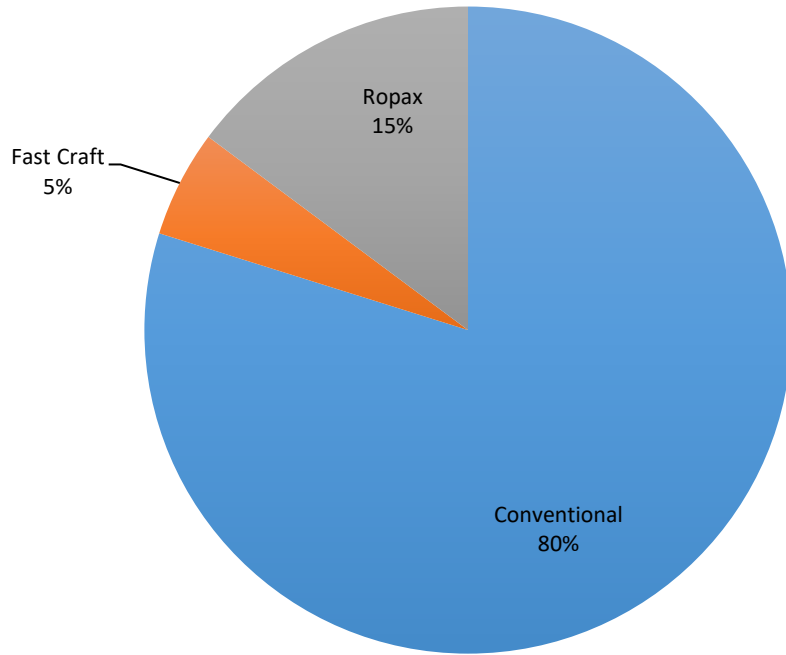
CARGO Ship Operations



PASSENGER and CARGO Ship Operations



Passenger Ship Types under Normal Operations



Cargo Ship Types under Normal Operations

