



**MARITIME INDUSTRY AUTHORITY  
WEEKLY SUMMARY SITUATION REPORT - Summary 51**

Passenger and Cargo Shipping Operations on March 05-011, 2021  
in areas under MGCQ and GCQ

*Data generated on March 05-011, 2021, 3:00 PM*

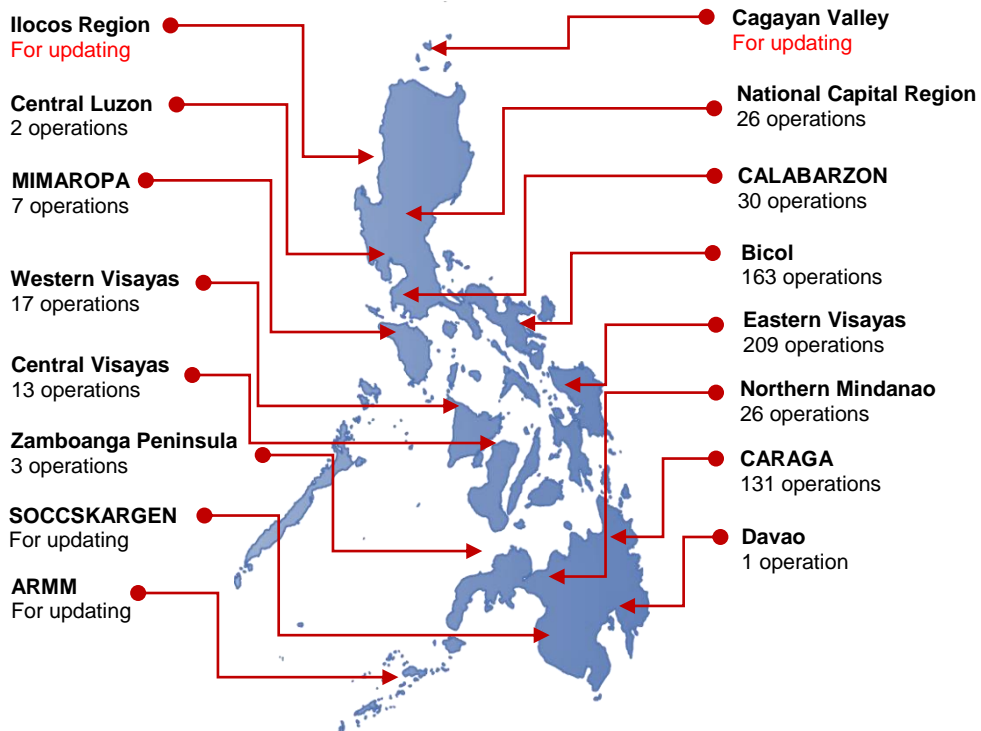
**HIGHLIGHTS**

- Ninety – six percent (96%) of passenger and cargo shipping operations were completed in accordance with the ships' CPC.
- Four percent ( 4%) of the shipping operations were affected due to the measures implemented in view Code Red Sublevel 2 for the COVID-19.
- Operations of passenger ships were more affected compared to cargo ships. 98% of the cargo shipping operations were completed under normal conditions compared to passenger ships at 95%.
- Daily average passenger and cargo ship operations are 151 completed under normal conditions, 2 cancelled trips, 5 delayed and 0 not completed voyage.
- **With cargo shipping still operational, transport of goods amid MGCQ, and GCQ is assured.**

**PASSENGER AND CARGO SHIPPING IN NUMBERS**  
March 05-011, 2021

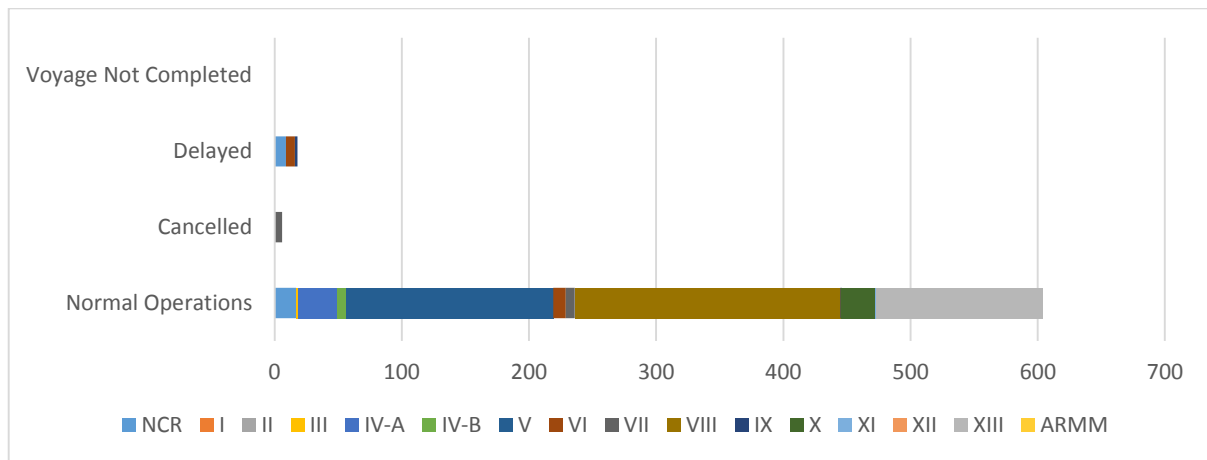
- 628** Shipping Operations Recorded
- 435** Passenger Ships Operated
- 193** Cargo Ships Operated
- 604** Ships Operated Normally
- 6** Operations Cancelled
- 18** Operations Delayed
- 0** Operation Uncompleted

**PASSENGER AND CARGO SHIPPING OPERATIONS IN THE PHILIPPINES  
IN AREAS UNDER MGCQ and GCQ**



**Total of 628 Passenger and Cargo Shipping Operations**

## I. STATUS OF SHIPPING OPERATIONS NATIONWIDE



On March 05-011, 2021, there were 628 passenger and cargo shipping operations conducted wherein 604 or 96% were completed in accordance with their Certificate of Public Convenience (CPC).

Out of the 604 operations completed under normal conditions, the reported movements were mostly in the Eastern Visayas Region at 35% and Bicol Region at 27%.

Meanwhile, 1% of the passenger and cargo shipping operations were cancelled, all due to the community quarantine measures imposed by the different local government units governing the ships' ports of destination. Mostly affected were operations in the Central Visayas Region.

Fifteen (15) passenger ships or 3% encountered delays due to the additional measures adopted in view of COVID-19 such as temperature screening and inspections.

Lastly, no shipping operations were not completed at the time of reporting, as the respective ships were still underway.

## II. STATUS OF SHIPPING OPERATIONS BY CLASSIFICATION

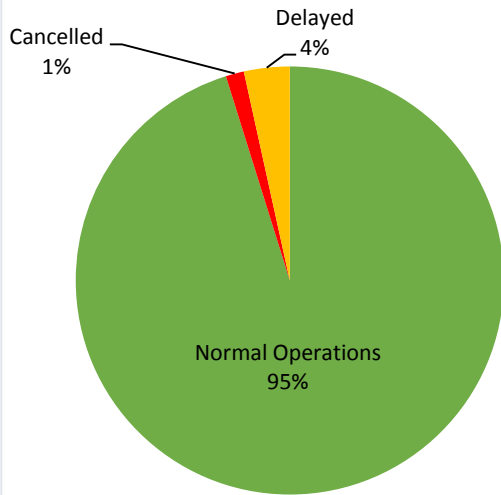
Region	Normal Operations		Cancelled		Delayed		Not Completed	
	Passenger	Cargo	Passenger	Cargo	Passenger	Cargo	Passenger	Cargo
<b>NCR</b>	<b>5</b>	<b>12</b>	-	-	<b>8</b>	<b>1</b>	-	-
<b>I</b>	-	-	-	-	-	-	-	-
<b>II</b>	-	-	-	-	-	-	-	-
<b>III</b>	-	<b>2</b>	-	-	-	-	-	-
<b>IV-A</b>	<b>30</b>	-	-	-	-	-	-	-
<b>IV-B</b>	<b>6</b>	<b>1</b>	-	-	-	-	-	-
<b>V</b>	<b>128</b>	<b>35</b>	-	-	-	-	-	-
<b>VI</b>	<b>7</b>	<b>3</b>	-	-	<b>7</b>	-	-	-
<b>VII</b>	<b>4</b>	<b>3</b>	<b>6</b>	-	-	-	-	-
<b>VIII</b>	<b>104</b>	<b>105</b>	-	-	-	-	-	-
<b>IX</b>	-	<b>1</b>	-	-	-	<b>2</b>	-	-
<b>X</b>	<b>20</b>	<b>6</b>	-	-	-	-	-	-
<b>XI</b>	-	<b>1</b>	-	-	-	-	-	-
<b>XII</b>	-	-	-	-	-	-	-	-
<b>XIII</b>	<b>110</b>	<b>21</b>	-	-	-	-	-	-
<b>ARMM</b>	-	-	-	-	-	-	-	-
<b>Total</b>	<b>414</b>	<b>190</b>	<b>6</b>	-	<b>15</b>	<b>3</b>	-	-

Amid the measures in place due to MGCQ, and GCQ, 190 out of 193 (98%) cargo ships still operated normally – are 29 bulk carrier, 37 container ships, 13 general cargo ships, 22 LCT ships, , 73 Roro cargo ships and 13 other cargo.

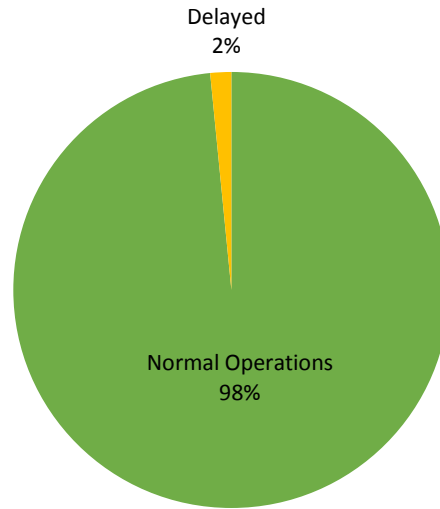
Four hundred and Fourteen (414) passenger ships completed their voyage – 353 conventional passenger ships, 39 RoPax ships and 22 fast craft ferry completed their operations but mostly only carried cargoes during their voyage.

Meanwhile out of the 435 passenger ships, 5% were affected by the measures adopted in view of COVID-19. These measures caused either the cancellation, delay, or uncompleted operations of 21 passenger ships.

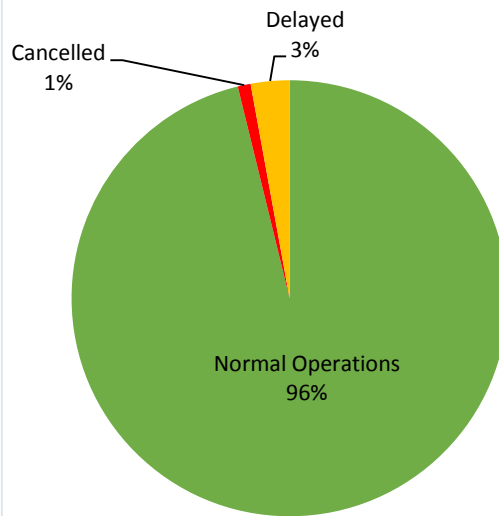
### PASSENGER Ship Operations



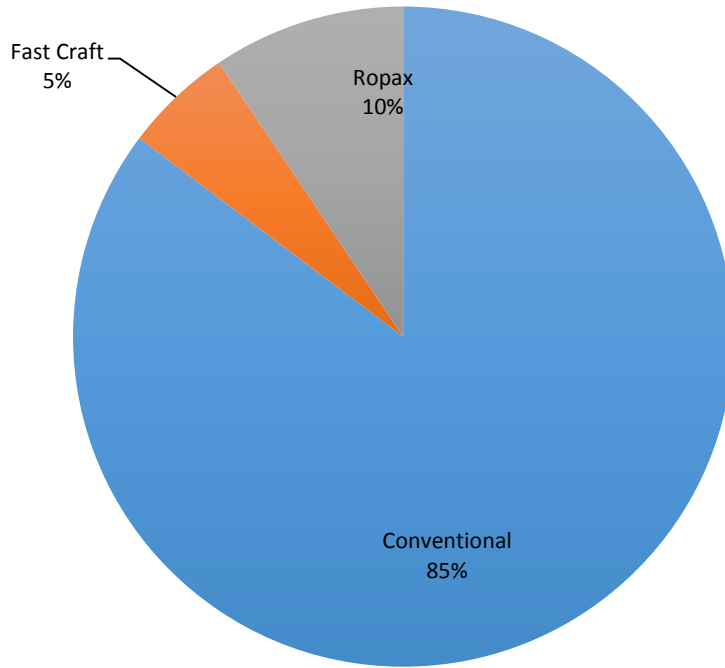
### CARGO Ship Operations



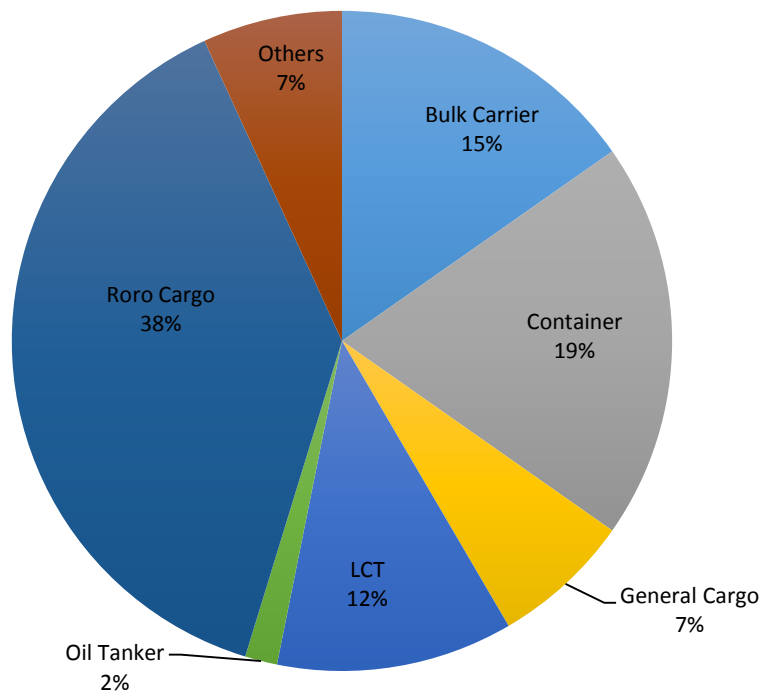
### PASSENGER and CARGO Ship Operations



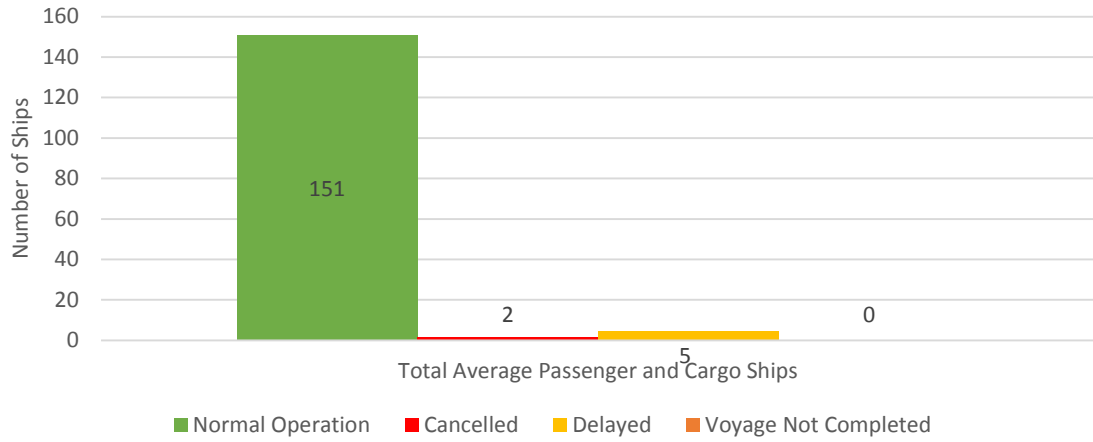
## Passenger Ship Types under Normal Operations



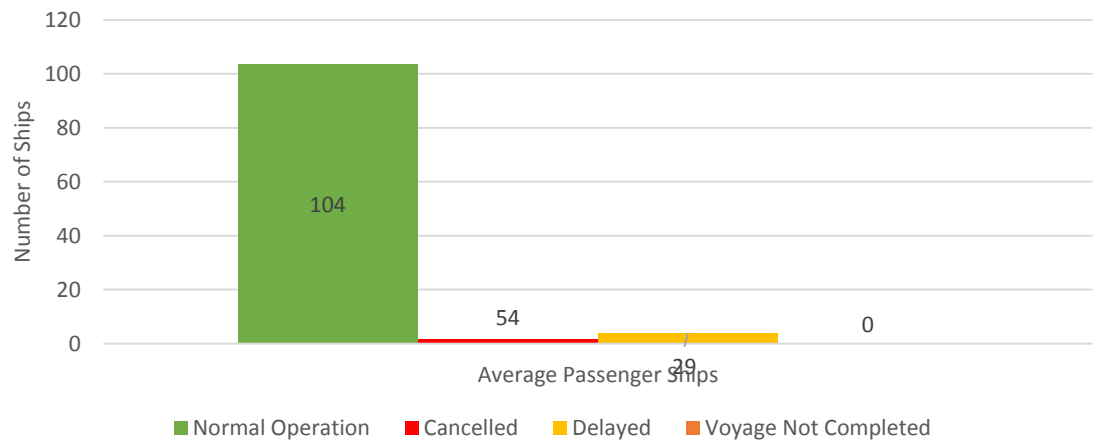
## Cargo Ship Types under Normal Operations



### Daily Average Passenger and Cargo Ship Operation



### Daily Average Passenger Ship Operation



### Daily Average Cargo Ship Operation

