



MARITIME INDUSTRY AUTHORITY
WEEKLY SUMMARY SITUATION REPORT - Summary 52
 Passenger and Cargo Shipping Operations on Mar 12 -18, 2021
 in areas under MGCQ and GCQ
Data generated on Mar 12 -18, 2021, 3:00 PM

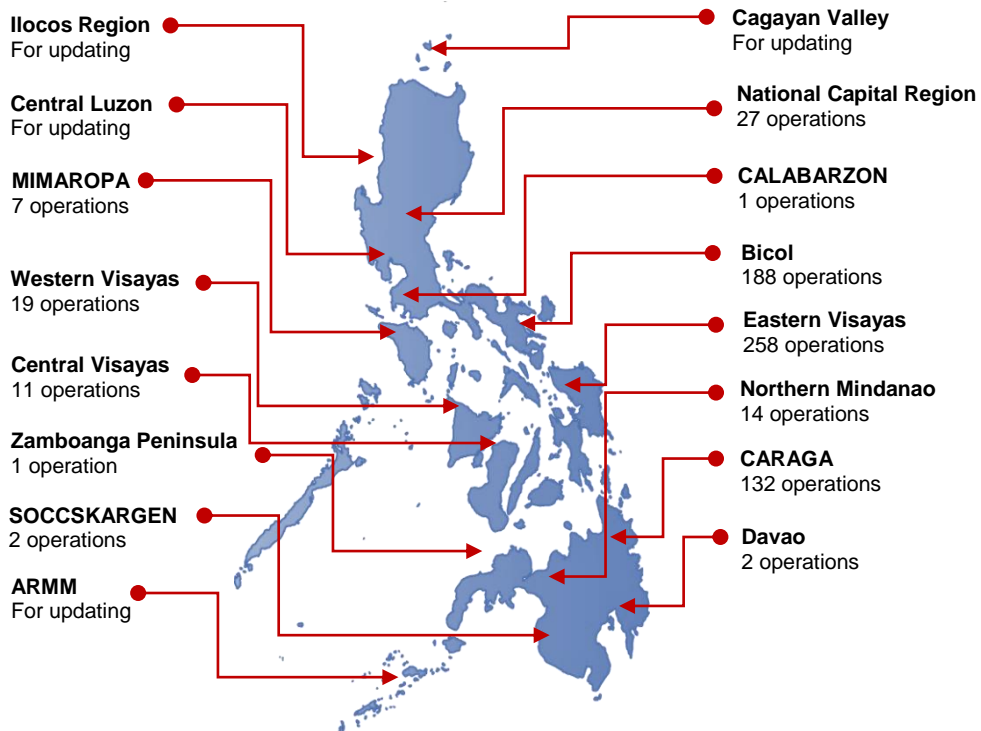
HIGHLIGHTS

- Ninety-Seven percent (97%) of passenger and cargo shipping operations were completed in accordance with the ships' CPC.
- Three percent (3%) of the shipping operations were affected due to the measures implemented in view Code Red Sublevel 2 for the COVID-19.
- Operations of passenger ships were more affected compared to cargo ships. 100% of the cargo shipping operations were completed under normal conditions compared to passenger ships at 96%.
- Daily average passenger and cargo ship operations are 169 completed under normal conditions, 2 cancelled trips, 3 delayed and 0 not completed voyage.
- **With cargo shipping still operational, transport of goods amid MGCQ, and GCQ is assured.**

PASSENGER AND CARGO SHIPPING IN NUMBERS
 Mar 12 -18, 2021

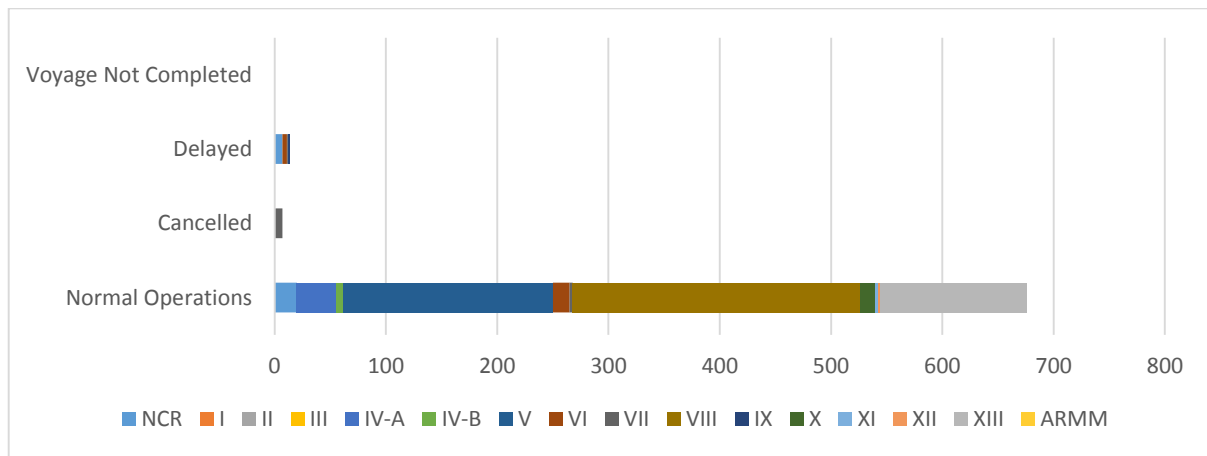
- 696** Shipping Operations Recorded
- 474** Passenger Ships Operated
- 222** Cargo Ships Operated
- 676** Ships Operated Normally
- 7** Operations Cancelled
- 13** Operations Delayed
- 0** Operation Uncompleted

PASSENGER AND CARGO SHIPPING OPERATIONS IN THE PHILIPPINES
IN AREAS UNDER MGCQ and GCQ



Total of 696 Passenger and Cargo Shipping Operations

I. STATUS OF SHIPPING OPERATIONS NATIONWIDE



On Mar 12 -18, 2021, there were 696 passenger and cargo shipping operations conducted wherein 676 or 97% were completed in accordance with their Certificate of Public Convenience (CPC).

Out of the 676 operations completed under normal conditions, the reported movements were mostly in the Eastern Visayas Region at 38% and Bicol Region at 28%.

Meanwhile, 1% of the passenger and cargo shipping operations were cancelled, all due to the community quarantine measures imposed by the different local government units governing the ships' ports of destination. Mostly affected were operations in the Central Visayas Region.

Twelve (12) passenger ships or 3% encountered delays due to the additional measures adopted in view of COVID-19 such as temperature screening and inspections.

Lastly, no passenger and cargo shipping operations were not completed at the time of reporting.

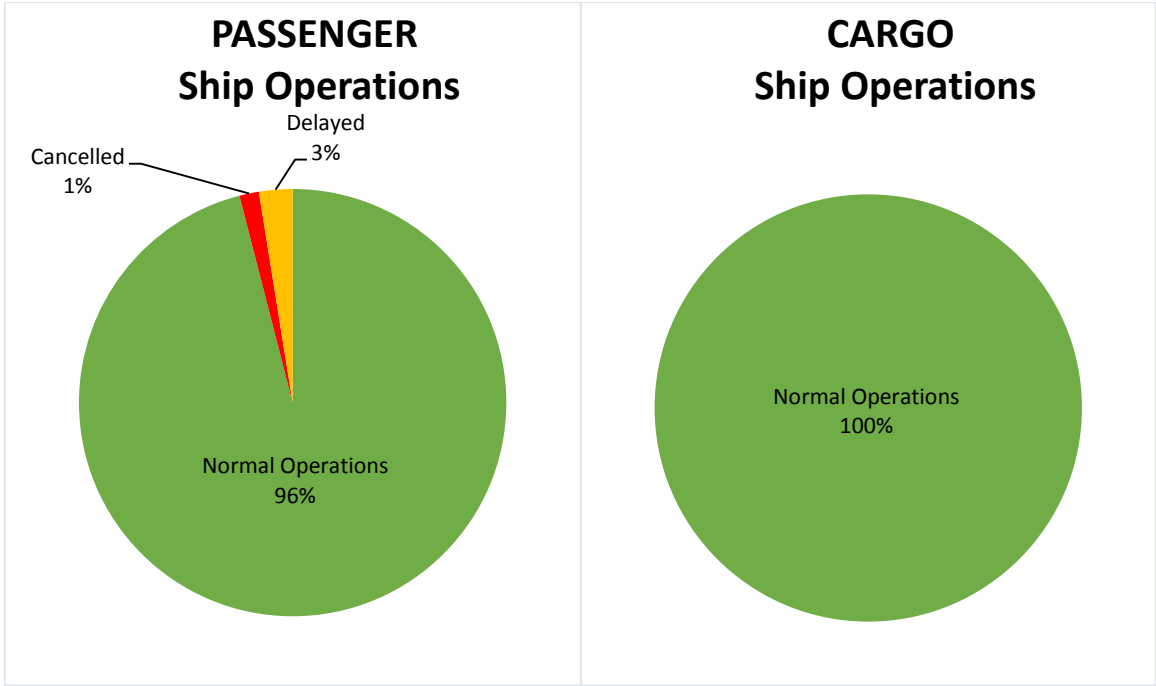
II. STATUS OF SHIPPING OPERATIONS BY CLASSIFICATION

Region	Normal Operations		Cancelled		Delayed		Not Completed	
	Passenger	Cargo	Passenger	Cargo	Passenger	Cargo	Passenger	Cargo
NCR	10	10	-	-	6	1	-	-
I	-	-	-	-	-	-	-	-
II	-	-	-	-	-	-	-	-
III	-	-	-	-	-	-	-	-
IV-A	34	1	-	-	-	-	-	-
IV-B	6	1	-	-	-	-	-	-
V	153	35	-	-	-	-	-	-
VI	13	2	-	-	4	-	-	-
VII	2	1	7	-	1	-	-	-
VIII	119	139	-	-	-	-	-	-
IX	-	-	-	-	1	-	-	-
X	6	8	-	-	-	-	-	-
XI	-	2	-	-	-	-	-	-
XII	-	2	-	-	-	-	-	-
XIII	112	20	-	-	-	-	-	-
ARMM	-	-	-	-	-	-	-	-
Total	455	221	7	-	12	1	-	-

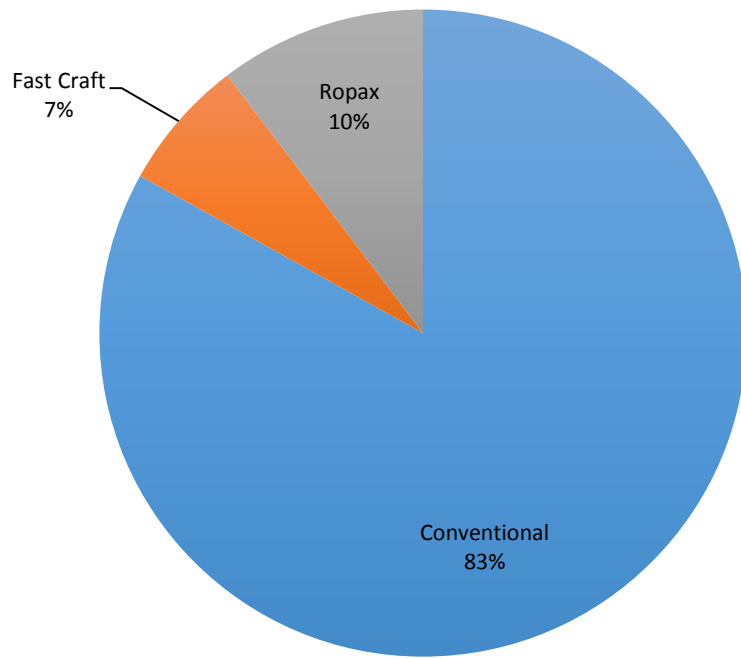
Amid the measures in place due to MGCQ, and GCQ, 221 out of 222 (100%) cargo ships still operated normally – are 40 bulk carrier, 29 container ships, 20 general cargo ships, 31 LCT ships, 3 oil tankers, 87 Roro cargo ships and 11 other cargo.

Four hundred and fifty-five (455) passenger ships completed their voyage – 378 conventional passenger ships, 47 RoPax ships and 30 fast craft ferry completed their operations but mostly only carried cargoes during their voyage.

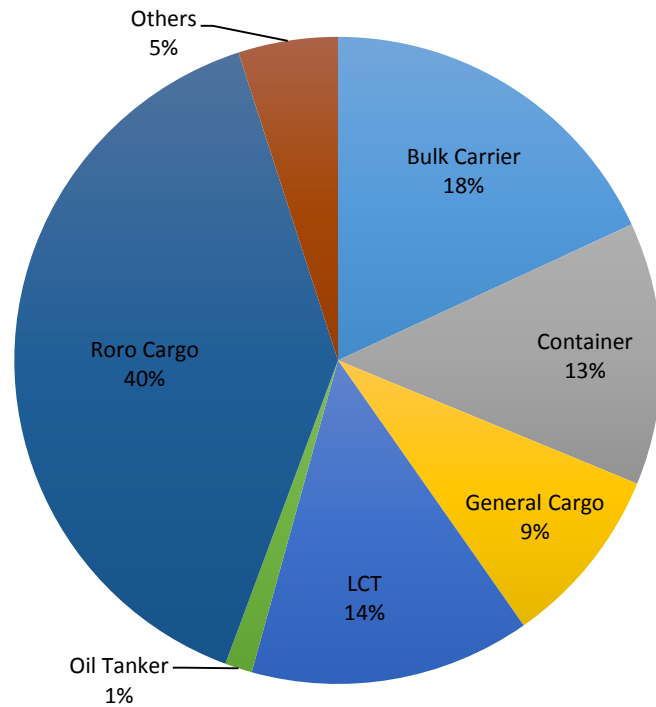
Meanwhile out of the 474 passenger ships, 4% were affected by the measures adopted in view of COVID-19. These measures caused either the cancellation, delay, or uncompleted operations of 19 passenger ships.



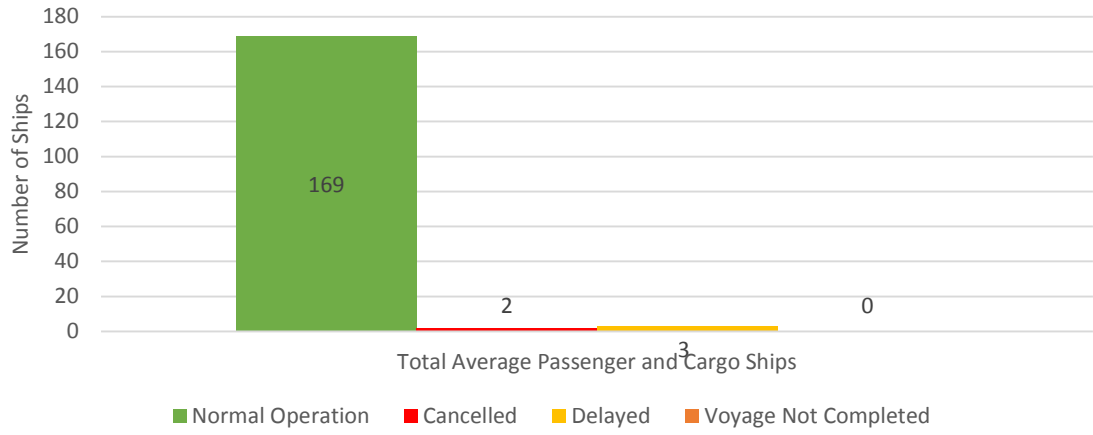
Passenger Ship Types under Normal Operations



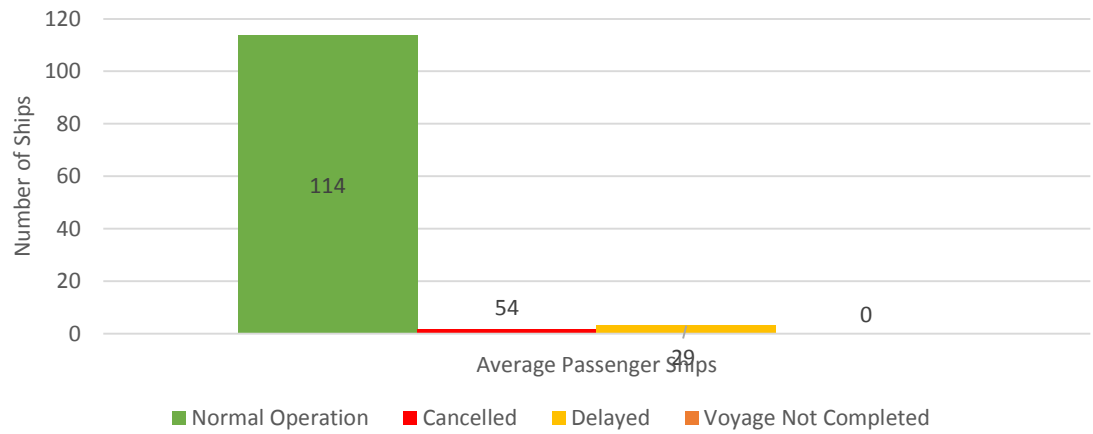
Cargo Ship Types under Normal Operations



Daily Average Passenger and Cargo Ship Operation



Daily Average Passenger Ship Operation



Daily Average Cargo Ship Operation

