



**MARITIME INDUSTRY AUTHORITY
WEEKLY SUMMARY SITUATION REPORT - 0**

Passenger and Cargo Shipping Operations on 12:00:00 AM
in areas under MGCQ and GCQ

Data generated on 12:00:00 AM, 3:00 PM

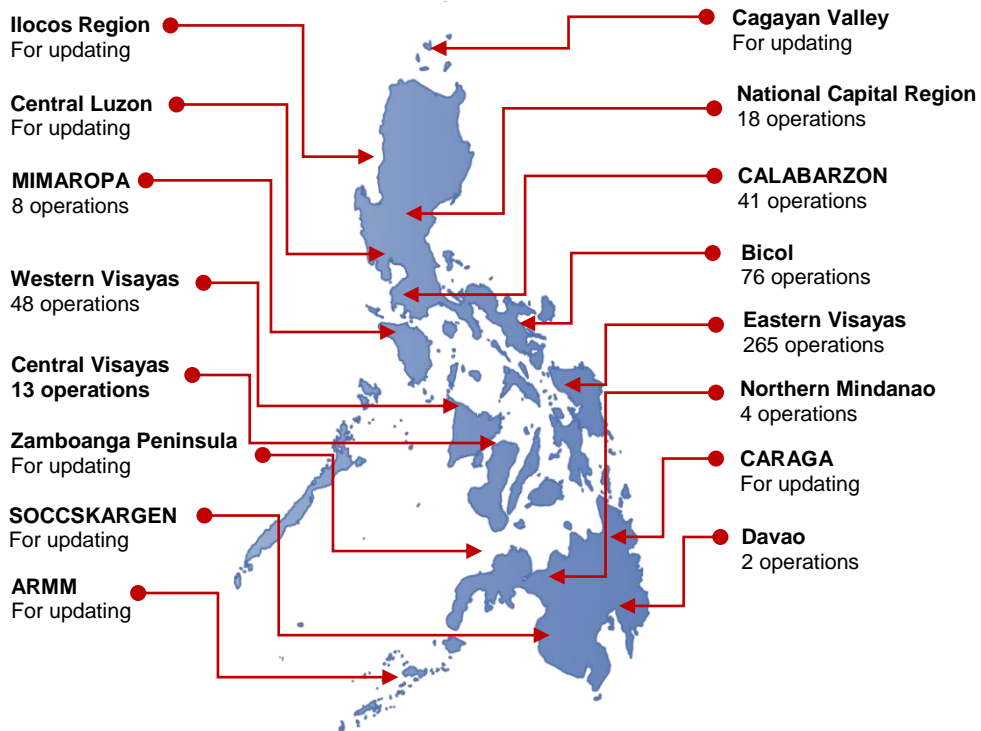
HIGHLIGHTS

- Ninety-Six percent (96%) of passenger and cargo shipping operations were completed in accordance with the ships' CPC.
- Four percent (4%) of the shipping operations were affected due to the measures implemented in view Code Red Sublevel 2 for the COVID-19.
- Operations of passenger ships were more affected compared to cargo ships. 100% of the cargo shipping operations were completed under normal conditions compared to passenger ships at 93%.
- Daily average passenger and cargo ship operations are 115 completed under normal conditions, 2 cancelled trips, 3 delayed and 0 not completed voyage.
- **With cargo shipping still operational, transport of goods amid MGCQ, and GCQ is assured.**

PASSENGER AND CARGO SHIPPING IN NUMBERS
12:00:00 AM

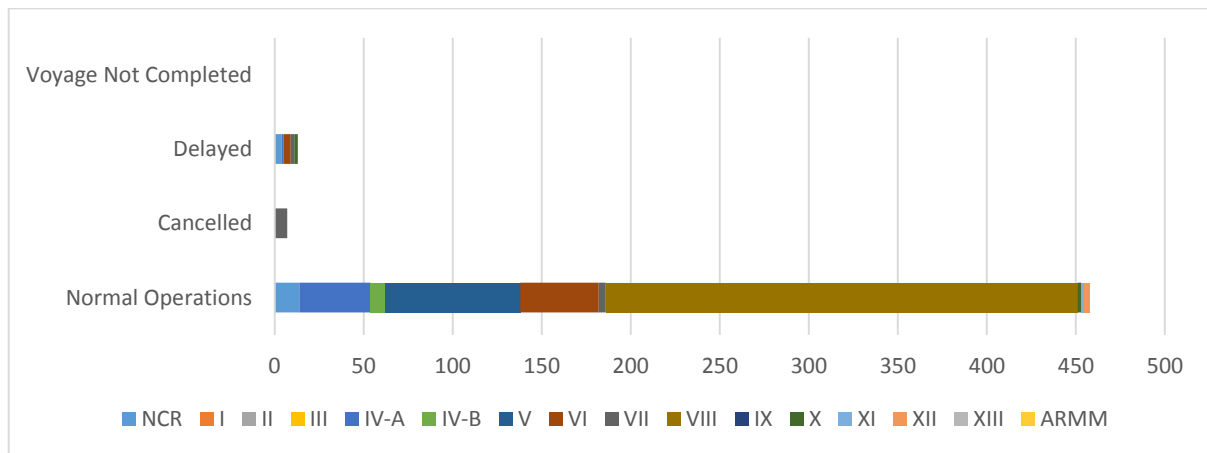
- 478** Shipping Operations Recorded
- 291** Passenger Ships Operated
- 187** Cargo Ships Operated
- 458** Ships Operated Normally
- 7** Operations Cancelled
- 13** Operations Delayed
- 0** Operation Uncompleted

**PASSENGER AND CARGO SHIPPING OPERATIONS IN THE PHILIPPINES
IN AREAS UNDER MGCQ and GCQ**



Total of 478 Passenger and Cargo Shipping Operations

I. STATUS OF SHIPPING OPERATIONS NATIONWIDE



On 12:00:00 AM, there were 478 passenger and cargo shipping operations conducted wherein 458 or 96% were completed in accordance with their Certificate of Public Convenience (CPC).

Out of the 458 operations completed under normal conditions, the reported movements were mostly in the Eastern Visayas Region at 58% and Western Visayas Region at 17%.

Meanwhile, 1% of the passenger and cargo shipping operations were cancelled, all due to the community quarantine measures imposed by the different local government units governing the ships' ports of destination. Mostly affected were operations in the Central Visayas Region.

Thirteen (13) passenger ships or 4% encountered delays due to the additional measures adopted in view of COVID-19 such as temperature screening and inspections.

Lastly, no passenger and cargo shipping operations were not completed at the time of reporting.

II. STATUS OF SHIPPING OPERATIONS BY CLASSIFICATION

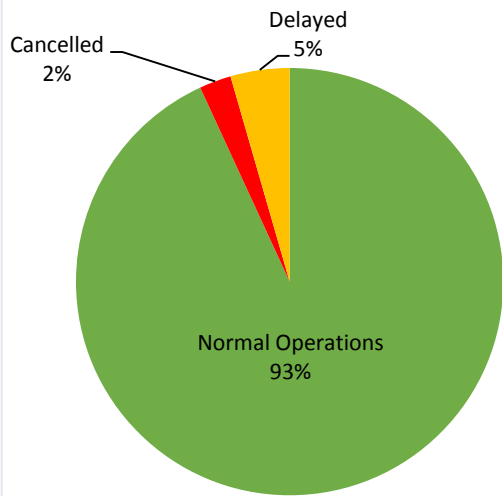
Region	Normal Operations		Cancelled		Delayed		Not Completed	
	Passenger	Cargo	Passenger	Cargo	Passenger	Cargo	Passenger	Cargo
NCR	9	5	-	-	4	-	-	-
I	-	-	-	-	-	-	-	-
II	-	-	-	-	-	-	-	-
III	-	-	-	-	-	-	-	-
IV-A	38	2	-	-	1	-	-	-
IV-B	8	-	-	-	-	-	-	-
V	59	17	-	-	-	-	-	-
VI	18	26	-	-	4	-	-	-
VII	-	4	7	-	2	-	-	-
VIII	139	126	-	-	-	-	-	-
IX	-	-	-	-	-	-	-	-
X	-	2	-	-	2	-	-	-
XI	-	2	-	-	-	-	-	-
XII	-	3	-	-	-	-	-	-
XIII	-	-	-	-	-	-	-	-
ARMM	-	-	-	-	-	-	-	-
Total	271	187	7	-	13	-	-	-

Amid the measures in place due to MGCQ, and GCQ, 187 out of 187 (100%) cargo ships still operated normally – are 32 bulk carrier, 27 container ships, 8 general cargo ships, 36 LCT ships, 1 oil tanker, 71 Roro cargo ships and 12 other cargo.

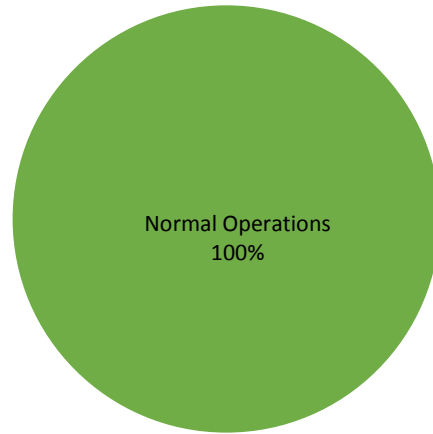
Two hundred and seventy-one (271) passenger ships completed their voyage – 203 conventional passenger ships, 52 RoPax ships and 16 fast craft ferry completed their operations but mostly only carried cargoes during their voyage.

Meanwhile out of the 291 passenger ships, 7% were affected by the measures adopted in view of COVID-19. These measures caused either the cancellation, delay, or uncompleted operations of 20 passenger ships.

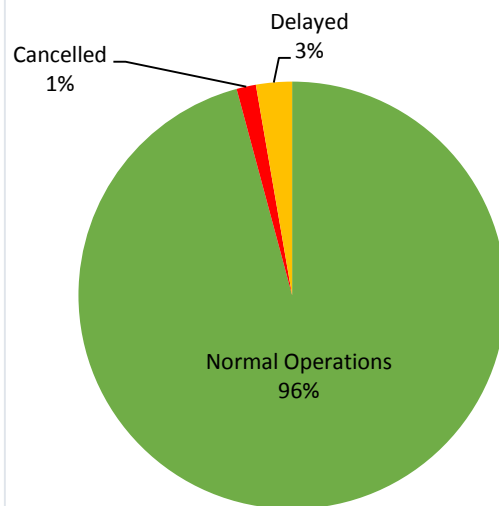
PASSENGER Ship Operations



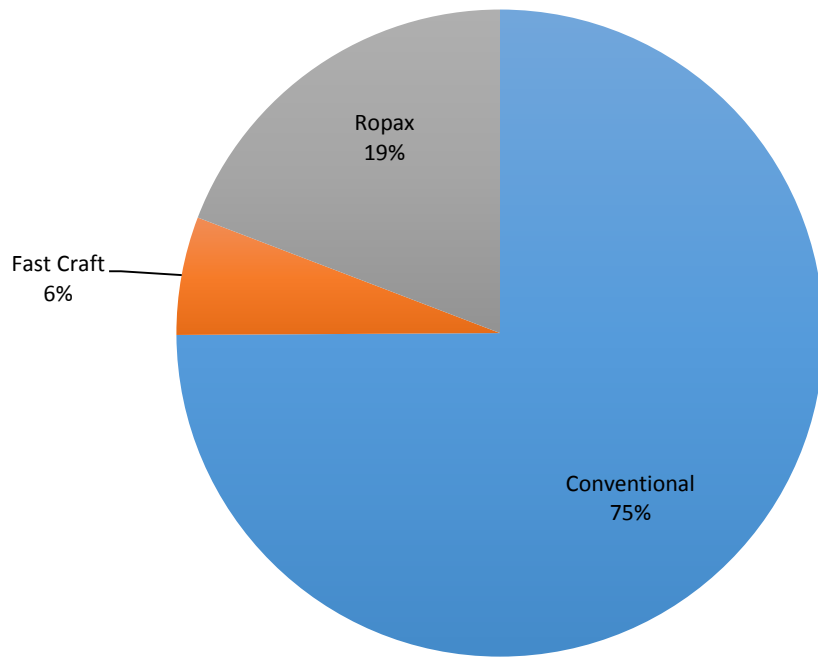
CARGO Ship Operations



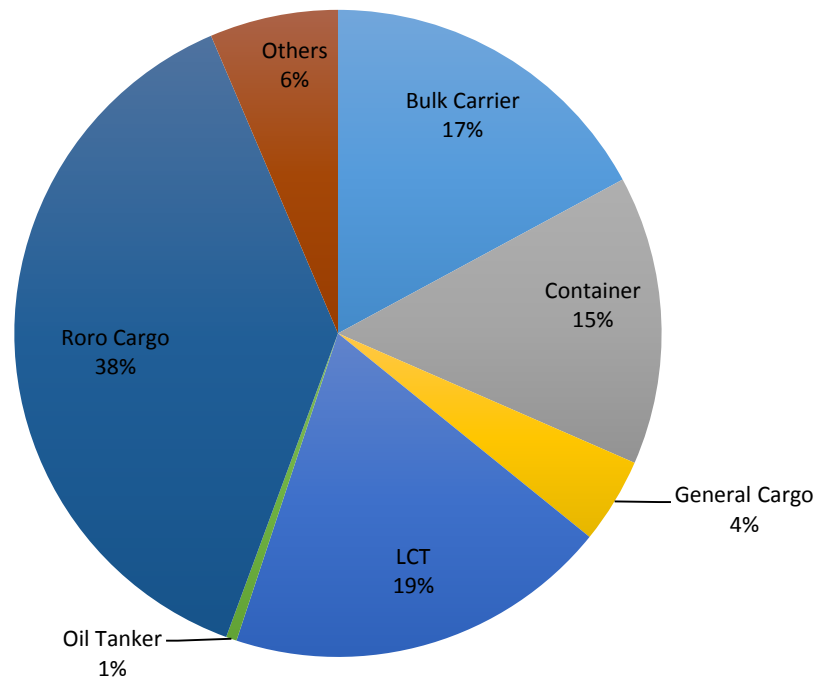
PASSENGER and CARGO Ship Operations



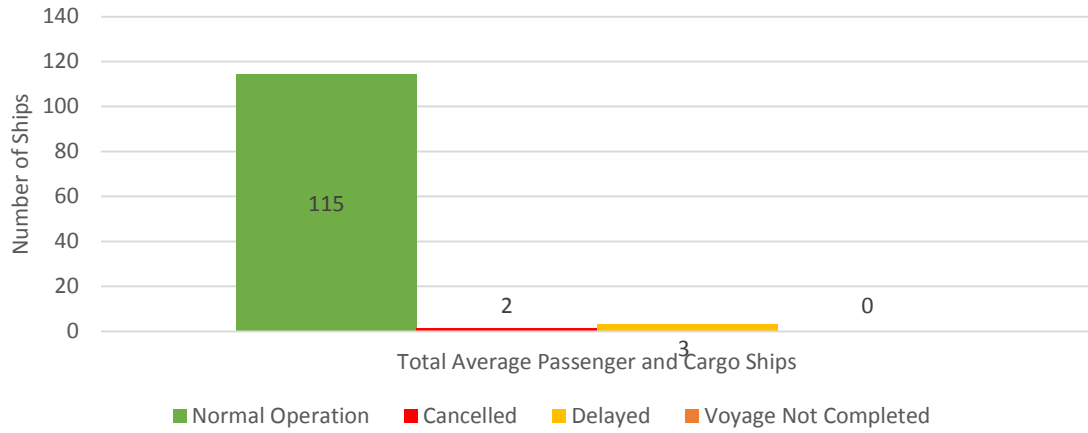
Passenger Ship Types under Normal Operations



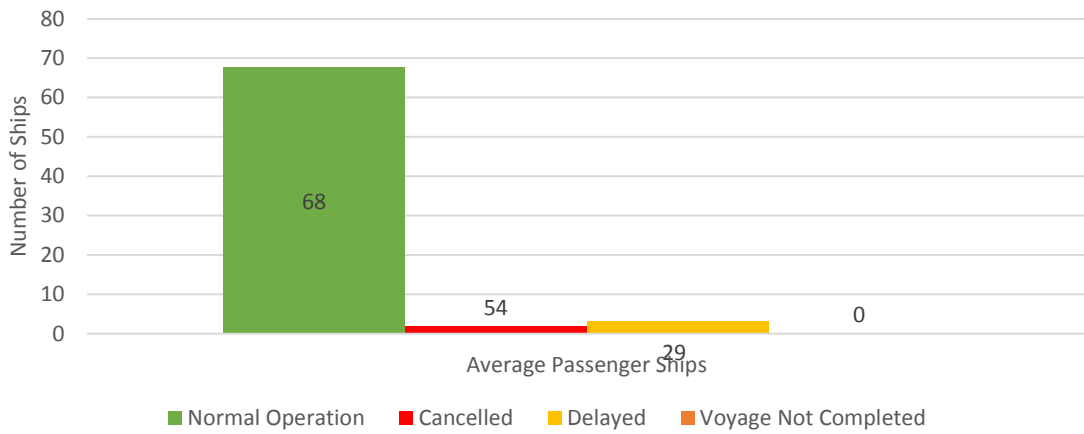
Cargo Ship Types under Normal Operations



Daily Average Passenger and Cargo Ship Operation



Daily Average Passenger Ship Operation



Daily Average Cargo Ship Operation

