



**MARITIME INDUSTRY AUTHORITY**  
**WEEKLY SUMMARY SITUATION REPORT - Summary 57**  
 Passenger and Cargo Shipping Operations on April 16 - 22, 2021  
 in areas under MGCQ and GCQ

*Data generated on April 16 - 22, 2021, 3:00 PM*

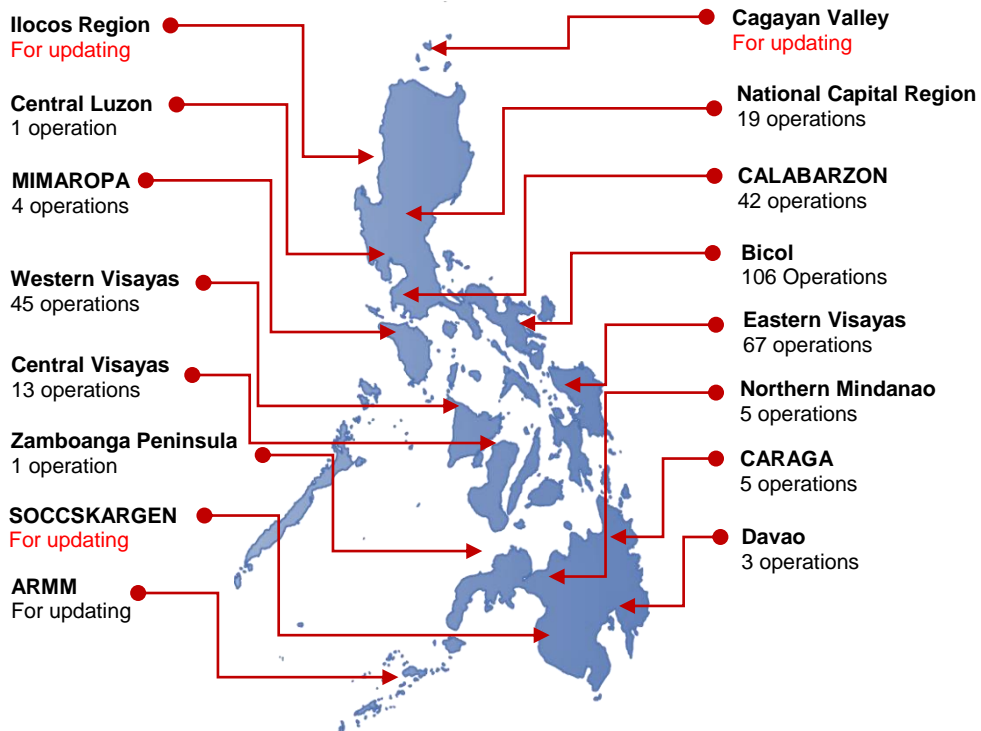
**HIGHLIGHTS**

- Ninety-One percent (91%) of passenger and cargo shipping operations were completed in accordance with the ships' CPC.
- Nine percent (9%) of the shipping operations were affected due to the measures implemented in view Code Red Sublevel 2 for the COVID-19.
- Operations of passenger ships were more affected compared to cargo ships. 100% of the cargo shipping operations were completed under normal conditions compared to passenger ships at 85%.
- Daily average passenger and cargo ship operations are 71 completed under normal conditions, 2 cancelled trips, 6 delayed and 0 not completed voyage.
- **With cargo shipping still operational, transport of goods amid MGCQ, and GCQ is assured.**

**PASSENGER AND CARGO SHIPPING IN NUMBERS**  
 April 16 - 22, 2021

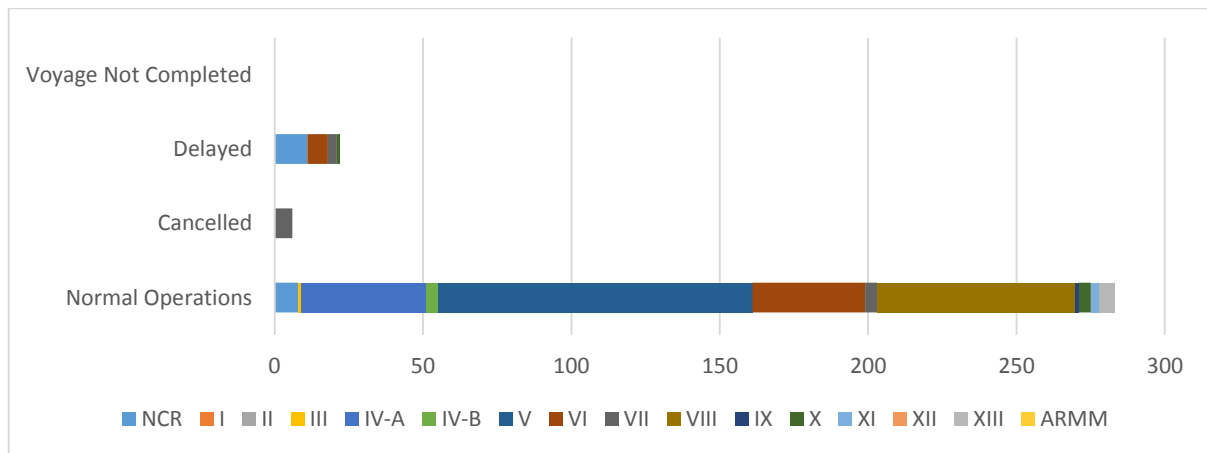
- 311** Shipping Operations Recorded
- 192** Passenger Ships Operated
- 119** Cargo Ships Operated
- 283** Ships Operated Normally
- 6** Operations Cancelled
- 22** Operations Delayed
- 0** Operation Uncompleted

**PASSENGER AND CARGO SHIPPING OPERATIONS IN THE PHILIPPINES  
 IN AREAS UNDER MGCQ and GCQ**



**Total of 311 Passenger and Cargo Shipping Operations**

## I. STATUS OF SHIPPING OPERATIONS NATIONWIDE



On April 16 - 22, 2021, there were 311 passenger and cargo shipping operations conducted wherein 283 or 91% were completed in accordance with their Certificate of Public Convenience (CPC).

Out of the 283 operations completed under normal conditions, the reported movements were mostly in the Bicol Region at 37% and Eastern Visayas Region at 24%.

Meanwhile, 2% of the passenger and cargo shipping operations were cancelled, all due to the community quarantine measures imposed by the different local government units governing the ships' ports of destination. Mostly affected were operations in the Central Visayas Region.

Twenty-Two (22) passenger ships or 11% encountered delays due to the additional measures adopted in view of COVID-19 such as temperature screening and inspections.

Lastly, no shipping operations were not completed at the time of reporting, as the respective ships were still underway.

## II. STATUS OF SHIPPING OPERATIONS BY CLASSIFICATION

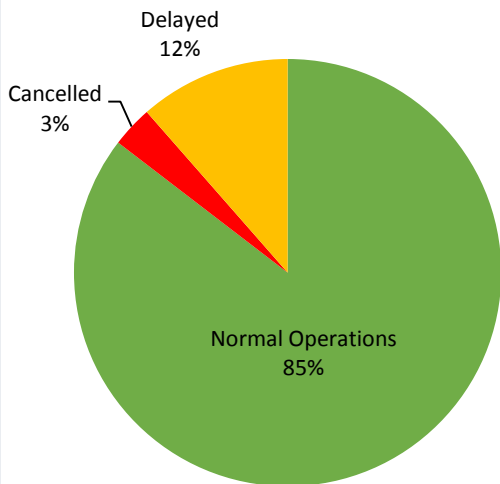
Region	Normal Operations		Cancelled		Delayed		Not Completed	
	Passenger	Cargo	Passenger	Cargo	Passenger	Cargo	Passenger	Cargo
<b>NCR</b>	<b>2</b>	<b>6</b>	-	-	<b>11</b>	-	-	-
<b>I</b>	-	-	-	-	-	-	-	-
<b>II</b>	-	-	-	-	-	-	-	-
<b>III</b>	-	<b>1</b>	-	-	-	-	-	-
<b>IV-A</b>	<b>38</b>	<b>4</b>	-	-	-	-	-	-
<b>IV-B</b>	<b>4</b>	-	-	-	-	-	-	-
<b>V</b>	<b>72</b>	<b>34</b>	-	-	-	-	-	-
<b>VI</b>	<b>15</b>	<b>23</b>	-	-	<b>7</b>	-	-	-
<b>VII</b>	<b>2</b>	<b>2</b>	<b>6</b>	-	<b>3</b>	-	-	-
<b>VIII</b>	<b>31</b>	<b>36</b>	-	-	-	-	-	-
<b>IX</b>	-	<b>1</b>	-	-	-	-	-	-
<b>X</b>	-	<b>4</b>	-	-	<b>1</b>	-	-	-
<b>XI</b>	-	<b>3</b>	-	-	-	-	-	-
<b>XII</b>	-	-	-	-	-	-	-	-
<b>XIII</b>	-	<b>5</b>	-	-	-	-	-	-
<b>ARMM</b>	-	-	-	-	-	-	-	-
<b>Total</b>	<b>164</b>	<b>119</b>	<b>6</b>	-	<b>22</b>	-	-	-

Amid the measures in place due to MGCQ, and GCQ, 119 out of 119 (100%) cargo ships still operated normally – are 6 bulk carrier, 18 container ships, 3 general cargo ships, 29 LCT ships, 5 oil tankers, 55 Roro cargo ships.

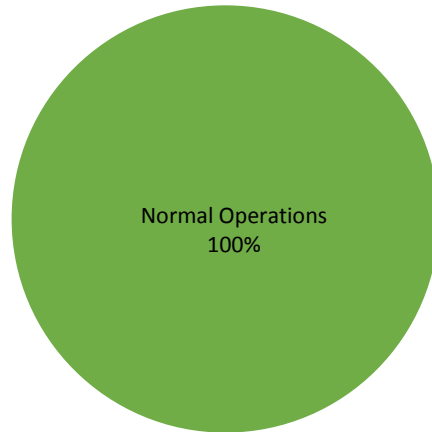
One-hundred and sixty four (164) passenger ships completed their voyage – 109 conventional passenger ships, 46 RoPax ships and 9 fast craft ferry completed their operations but mostly only carried cargoes during their voyage.

Meanwhile out of the 192 passenger ships, 15% were affected by the measures adopted in view of COVID-19. These measures caused either the cancellation, delay, or uncompleted operations of 28 passenger ships.

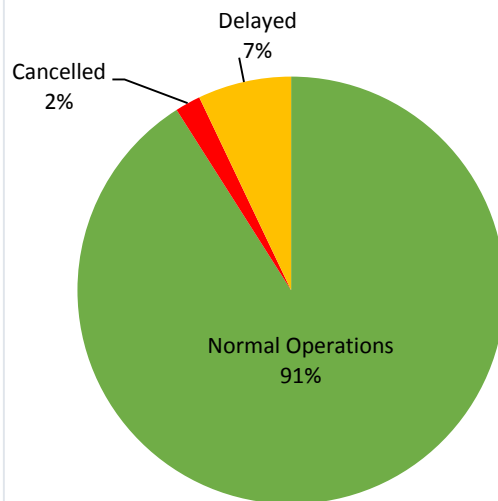
### PASSENGER Ship Operations



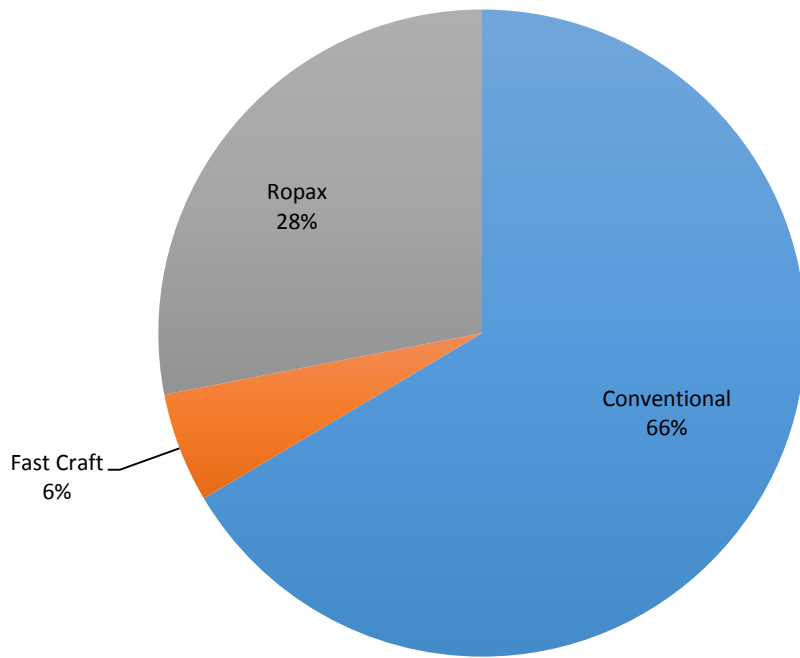
### CARGO Ship Operations



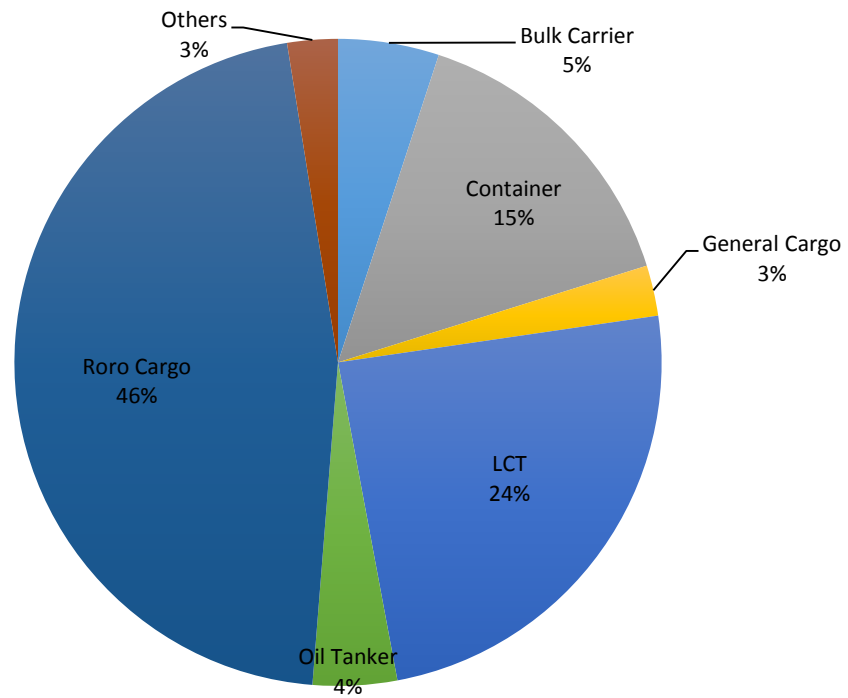
### PASSENGER and CARGO Ship Operations



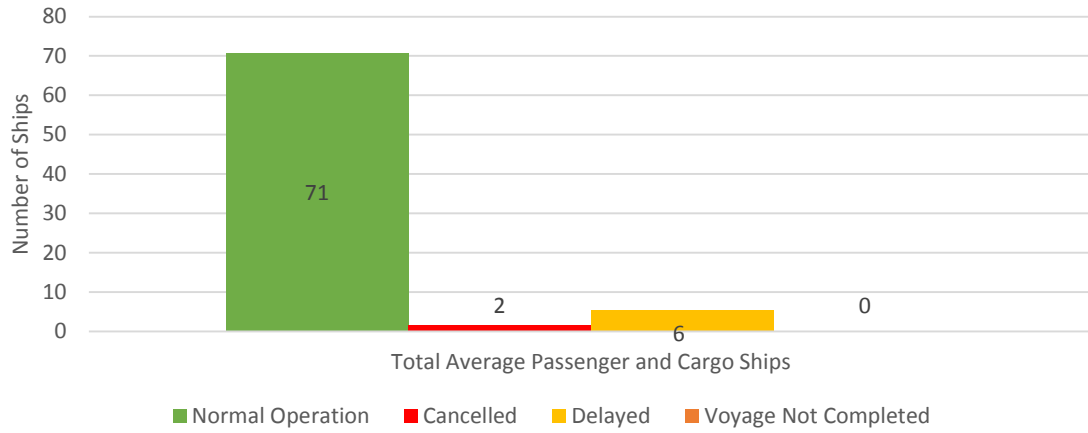
## Passenger Ship Types under Normal Operations



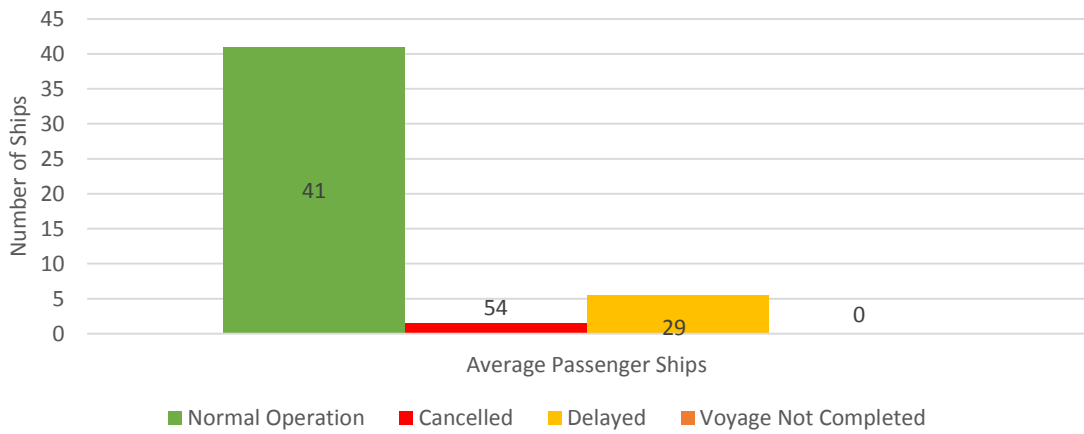
## Cargo Ship Types under Normal Operations



### Daily Average Passenger and Cargo Ship Operation



### Daily Average Passenger Ship Operation



### Daily Average Cargo Ship Operation

