



**MARITIME INDUSTRY AUTHORITY**  
**WEEKLY SUMMARY SITUATION REPORT - Summary 58**  
 Passenger and Cargo Shipping Operations on April 23 - 29, 2021  
 in areas under MGCQ and GCQ  
*Data generated on April 23 - 29, 2021, 3:00 PM*

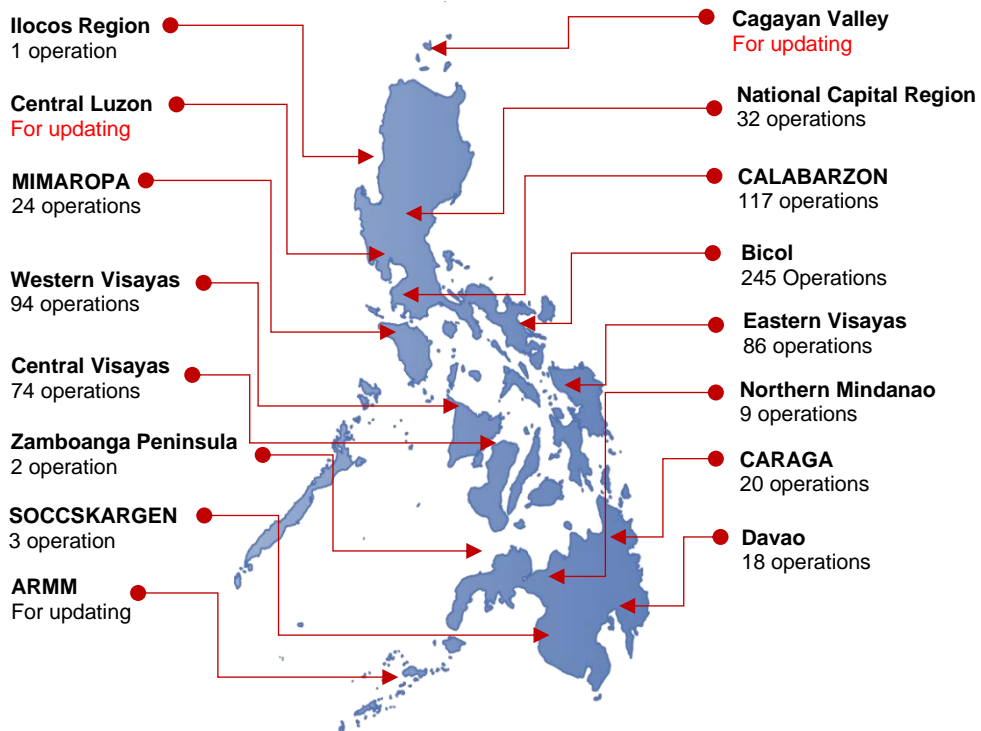
**HIGHLIGHTS**

- Ninety-three percent (93%) of passenger and cargo shipping operations were completed in accordance with the ships' CPC.
- Seven percent ( 7%) of the shipping operations were affected due to the measures implemented in view Code Red Sublevel 2 for the COVID-19.
- Operations of passenger ships were more affected compared to cargo ships. 95% of the cargo shipping operations were completed under normal conditions compared to passenger ships at 92%.
- Daily average passenger and cargo ship operations are 168 completed under normal conditions, 2 cancelled trips, 11 delayed and 0 not completed voyage.
- **With cargo shipping still operational, transport of goods amid MGCQ, and GCQ is assured.**

**PASSENGER AND CARGO SHIPPING IN NUMBERS**  
 April 23 - 29, 2021

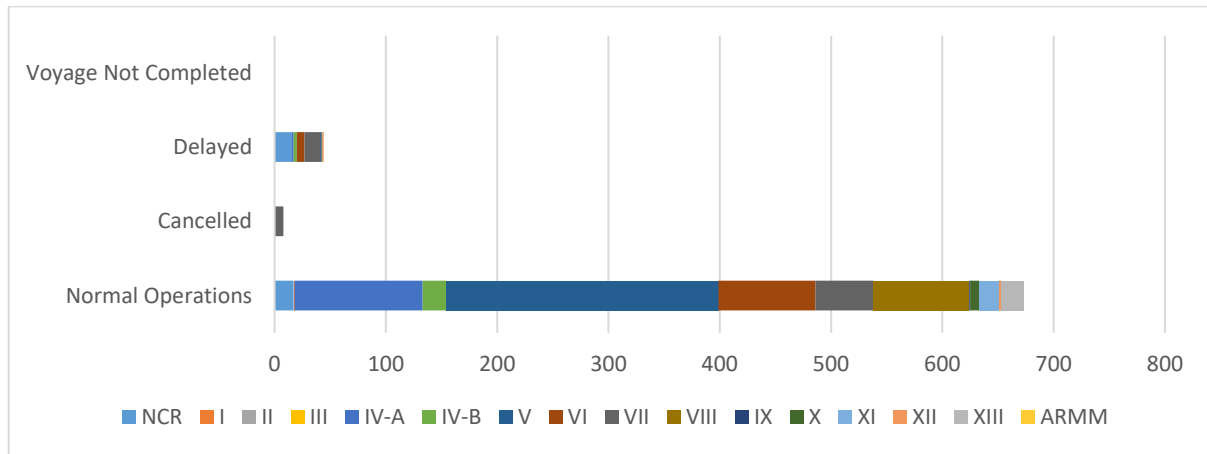
- 725** Shipping Operations Recorded
- 498** Passenger Ships Operated
- 227** Cargo Ships Operated
- 673** Ships Operated Normally
- 8** Operations Cancelled
- 44** Operations Delayed
- 0** Operation Uncompleted

**PASSENGER AND CARGO SHIPPING OPERATIONS IN THE PHILIPPINES**  
**IN AREAS UNDER MGCQ and GCQ**



**Total of 725 Passenger and Cargo Shipping Operations**

## I. STATUS OF SHIPPING OPERATIONS NATIONWIDE



On April 23 - 29, 2021, there were 725 passenger and cargo shipping operations conducted wherein 673 or 93% were completed in accordance with their Certificate of Public Convenience (CPC).

Out of the 673 operations completed under normal conditions, the reported movements were mostly in the Bicol Region at 36% and CALABARZON Region at 17%.

Meanwhile, 1% of the passenger and cargo shipping operations were cancelled, all due to the community quarantine measures imposed by the different local government units governing the ships' ports of destination. Mostly affected were operations in the Central Visayas Region.

Thirty-Four (34) passenger ships or 7% encountered delays due to the additional measures adopted in view of COVID-19 such as temperature screening and inspections.

Lastly, no shipping operations were not completed at the time of reporting, as the respective ships were still underway.

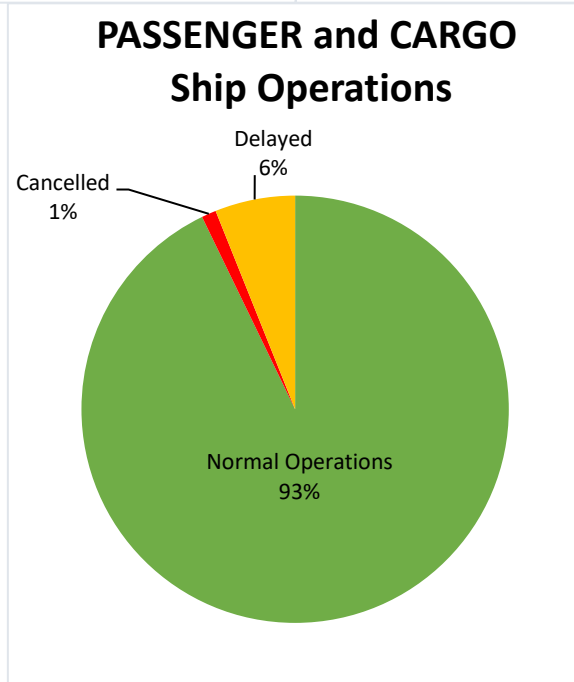
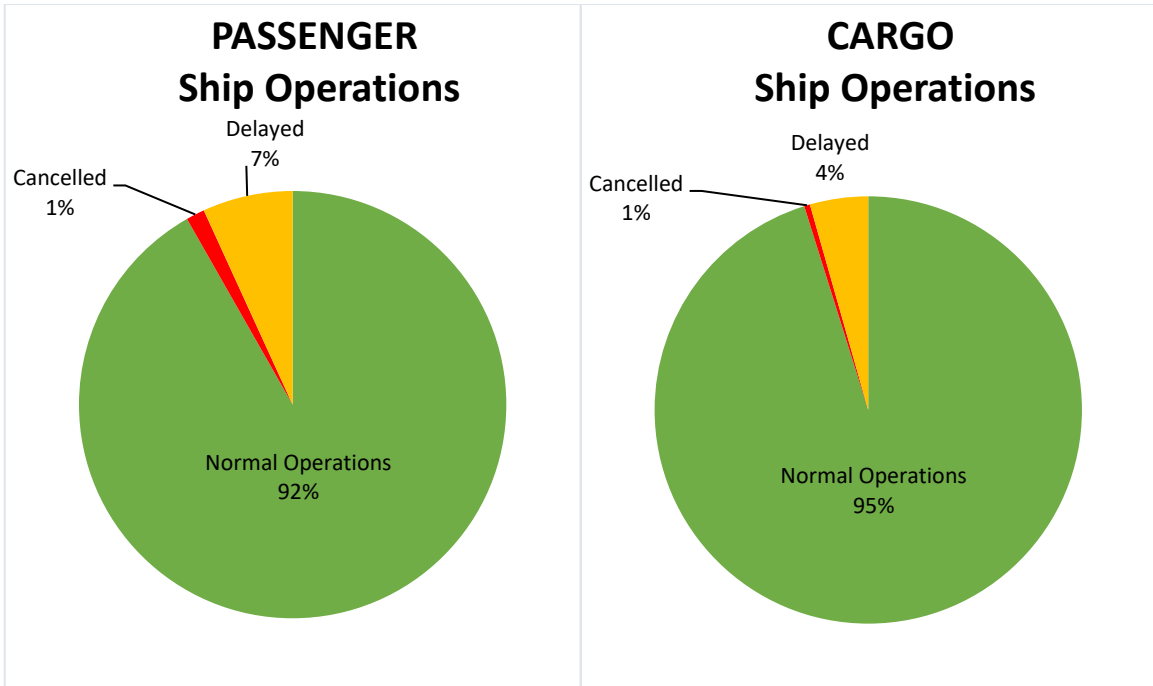
## II. STATUS OF SHIPPING OPERATIONS BY CLASSIFICATION

Region	Normal Operations		Cancelled		Delayed		Not Completed	
	Passenger	Cargo	Passenger	Cargo	Passenger	Cargo	Passenger	Cargo
<b>NCR</b>	5	12	-	-	11	4	-	-
<b>I</b>	1	-	-	-	-	-	-	-
<b>II</b>	-	-	-	-	-	-	-	-
<b>III</b>	-	-	-	-	-	-	-	-
<b>IV-A</b>	111	4	-	-	2	-	-	-
<b>IV-B</b>	18	3	-	-	2	1	-	-
<b>V</b>	202	43	-	-	-	-	-	-
<b>VI</b>	45	42	-	-	6	1	-	-
<b>VII</b>	23	29	7	1	12	2	-	-
<b>VIII</b>	30	56	-	-	-	-	-	-
<b>IX</b>	-	1	-	-	-	1	-	-
<b>X</b>	3	5	-	-	1	-	-	-
<b>XI</b>	2	16	-	-	-	-	-	-
<b>XII</b>	-	2	-	-	-	1	-	-
<b>XIII</b>	17	3	-	-	-	-	-	-
<b>ARMM</b>	-	-	-	-	-	-	-	-
<b>Total</b>	457	216	7	1	34	10	-	-

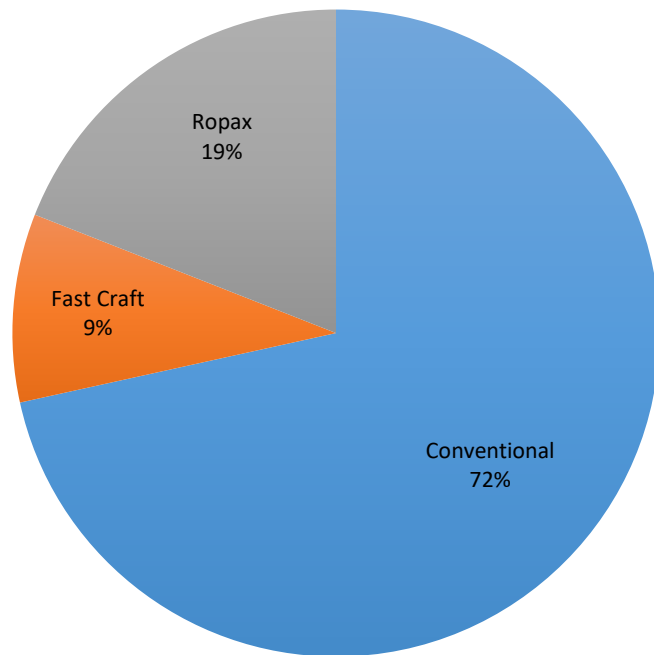
Amid the measures in place due to MGCQ, and GCQ, 216 out of 227 (95%) cargo ships still operated normally – are 8 bulk carrier, 34 container ships, 8 general cargo ships, 86 LCT ships, 4 oil tankers, 61 Roro cargo ships.

Three-hundred four (457) passenger ships completed their voyage – 327 conventional passenger ships, 87 RoPax ships and 43 fast craft ferry completed their operations but mostly only carried cargoes during their voyage.

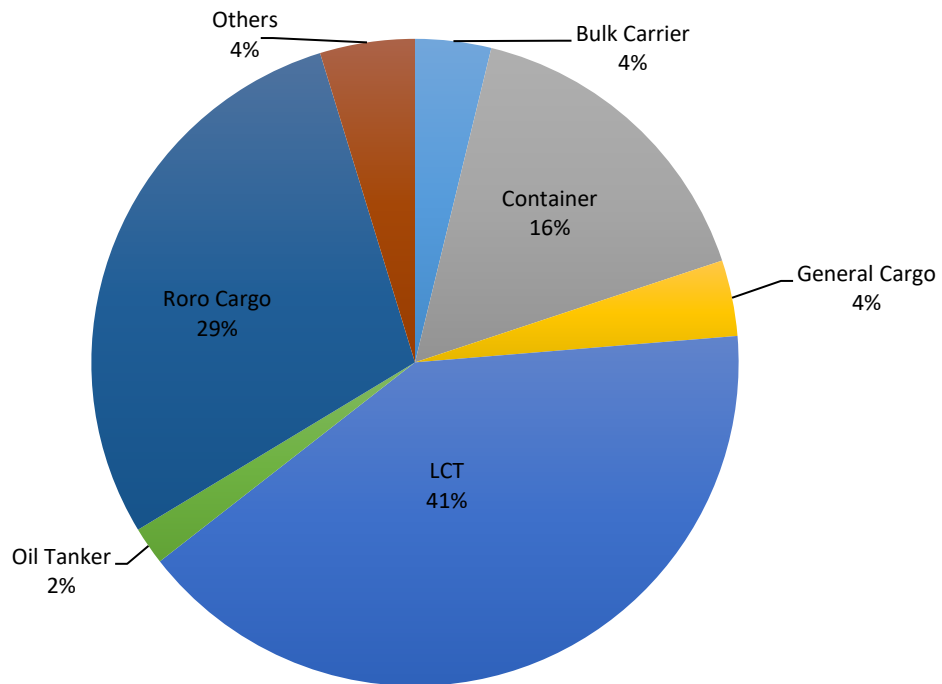
Meanwhile out of the 498 passenger ships, 8% were affected by the measures adopted in view of COVID-19. These measures caused either the cancellation, delay, or uncompleted operations of 41 passenger ships.



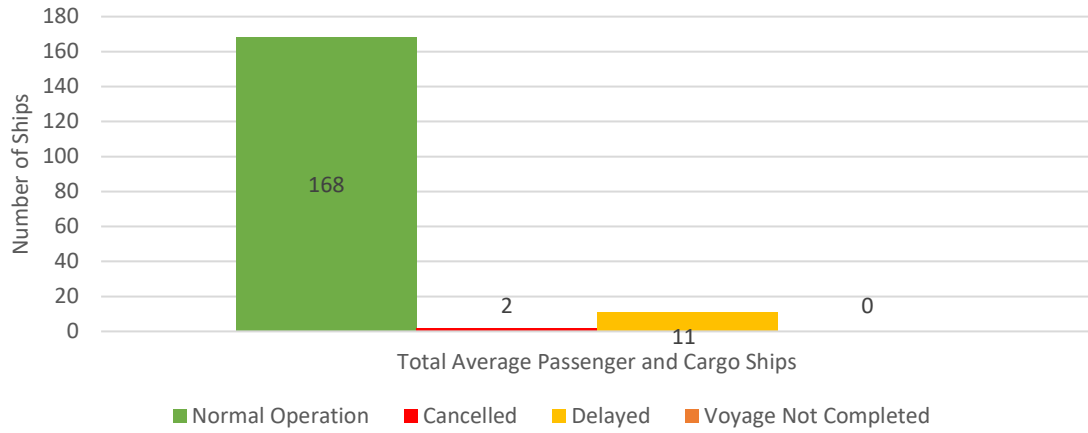
## Passenger Ship Types under Normal Operations



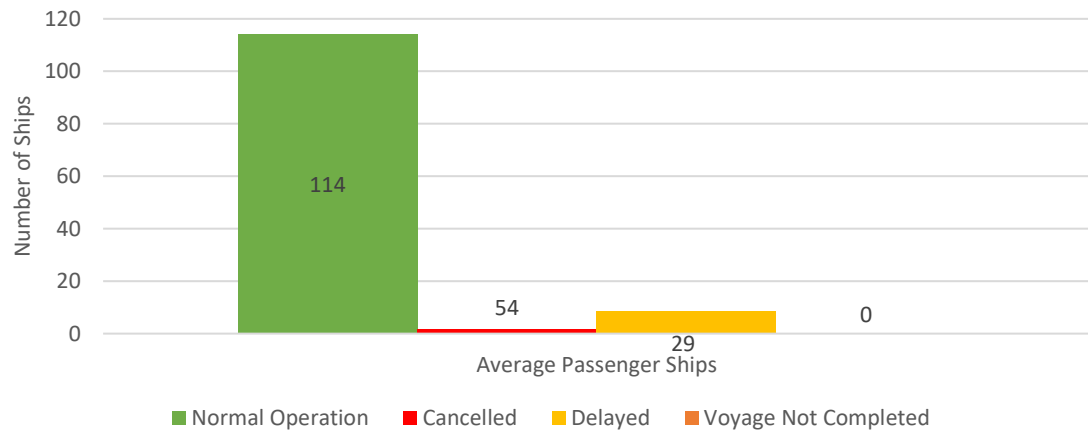
## Cargo Ship Types under Normal Operations



### Daily Average Passenger and Cargo Ship Operation



### Daily Average Passenger Ship Operation



### Daily Average Cargo Ship Operation

