



**MARITIME INDUSTRY AUTHORITY
WEEKLY SUMMARY SITUATION REPORT - Summary 59**

Passenger and Cargo Shipping Operations on April 30 - May 05, 2021
in areas under MGCQ and GCQ

Data generated on April 30 - May 05, 2021, 3:00 PM

HIGHLIGHTS

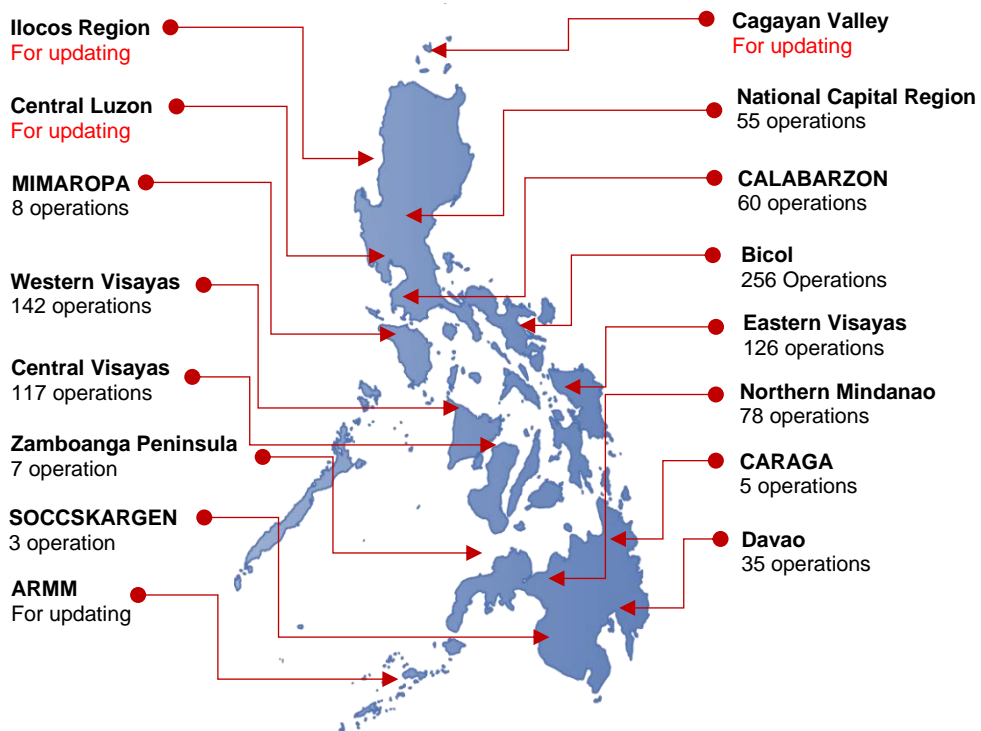
- Ninety-two percent (92%) of passenger and cargo shipping operations were completed in accordance with the ships' CPC.
- Eight percent (8%) of the shipping operations were affected due to the measures implemented in view Code Red Sublevel 2 for the COVID-19.
- Operations of passenger ships were more affected compared to cargo ships. 98% of the cargo shipping operations were completed under normal conditions compared to passenger ships at 87%.
- Daily average passenger and cargo ship operations are 206 completed under normal conditions, 5 cancelled trips, 12 delayed and 0 not completed voyage.
- **With cargo shipping still operational, transport of goods amid MGCQ, and GCQ is assured.**

PASSENGER AND CARGO SHIPPING IN NUMBERS

April 30 - May 05, 2021

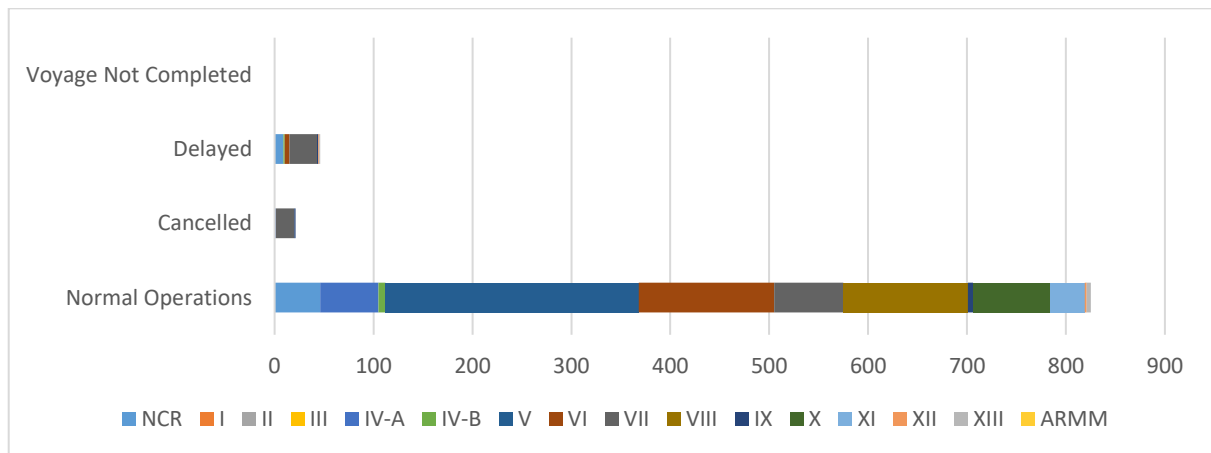
- 892** Shipping Operations Recorded
- 462** Passenger Ships Operated
- 430** Cargo Ships Operated
- 825** Ships Operated Normally
- 21** Operations Cancelled
- 46** Operations Delayed
- 0** Operation Uncompleted

**PASSENGER AND CARGO SHIPPING OPERATIONS IN THE PHILIPPINES
IN AREAS UNDER MGCQ and GCQ**



Total of 892 Passenger and Cargo Shipping Operations

I. STATUS OF SHIPPING OPERATIONS NATIONWIDE



On April 30 - May 05, 2021, there were 892 passenger and cargo shipping operations conducted wherein 825 or 92% were completed in accordance with their Certificate of Public Convenience (CPC).

Out of the 825 operations completed under normal conditions, the reported movements were mostly in the Bicol Region at 31% and Western Visayas Region at 17%.

Meanwhile, 2% of the passenger and cargo shipping operations were cancelled, all due to the community quarantine measures imposed by the different local government units governing the ships' ports of destination. Mostly affected were operations in the Central Visayas and Western Mindanao Regions.

Forty (40) passenger ships or 9% encountered delays due to the additional measures adopted in view of COVID-19 such as temperature screening and inspections.

Lastly, no shipping operations were not completed at the time of reporting, as the respective ships were still underway.

II. STATUS OF SHIPPING OPERATIONS BY CLASSIFICATION

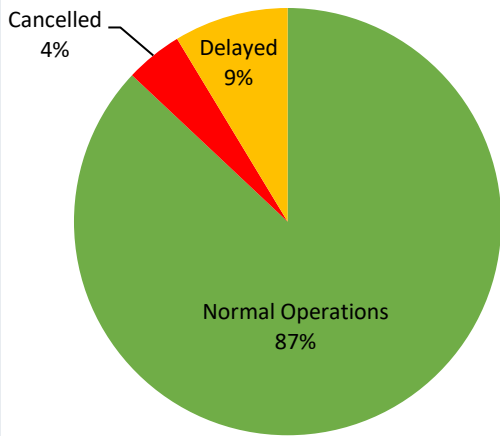
Region	Normal Operations		Cancelled		Delayed		Not Completed	
	Passenger	Cargo	Passenger	Cargo	Passenger	Cargo	Passenger	Cargo
NCR	7	39	-	-	6	3	-	-
I	-	-	-	-	-	-	-	-
II	-	-	-	-	-	-	-	-
III	-	-	-	-	-	-	-	-
IV-A	55	4	-	1	-	-	-	-
IV-B	6	1	-	-	1	-	-	-
V	168	88	-	-	-	-	-	-
VI	57	80	-	-	4	1	-	-
VII	24	46	19	-	28	-	-	-
VIII	38	88	-	-	-	-	-	-
IX	1	4	1	-	-	1	-	-
X	35	43	-	-	-	-	-	-
XI	11	24	-	-	-	-	-	-
XII	-	2	-	-	-	1	-	-
XIII	-	4	-	-	1	-	-	-
ARMM	-	-	-	-	-	-	-	-
Total	402	423	20	1	40	6	-	-

Amid the measures in place due to MGCQ, and GCQ, 423 out of 430 (98%) cargo ships still operated normally – are 10 bulk carrier, 93 container ships, 11 general cargo ships, 105 LCT ships, 2 oil tankers, 186 Roro cargo ships.

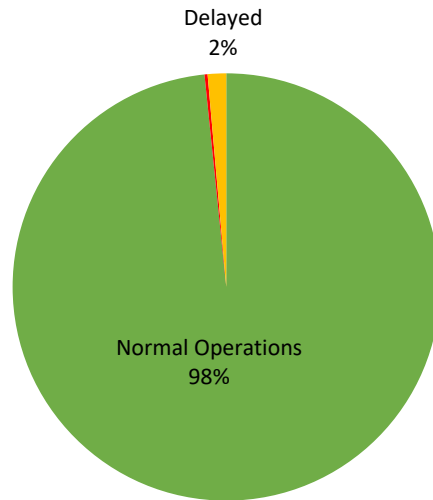
Four hundred two (402) passenger ships completed their voyage – 252 conventional passenger ships, 97 RoPax ships and 53 fast craft ferry completed their operations but mostly only carried cargoes during their voyage.

Meanwhile out of the 462 passenger ships, 13% were affected by the measures adopted in view of COVID-19. These measures caused either the cancellation, delay, or uncompleted operations of 60 passenger ships.

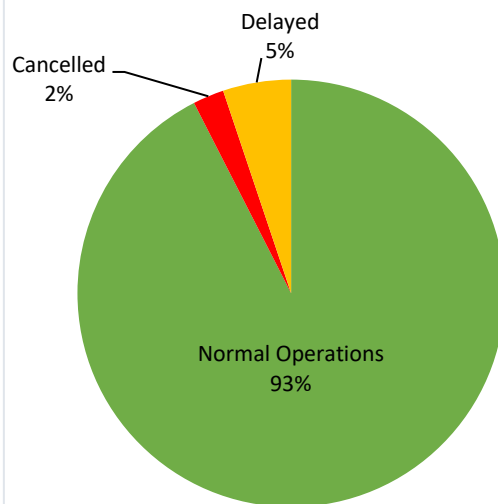
PASSENGER Ship Operations



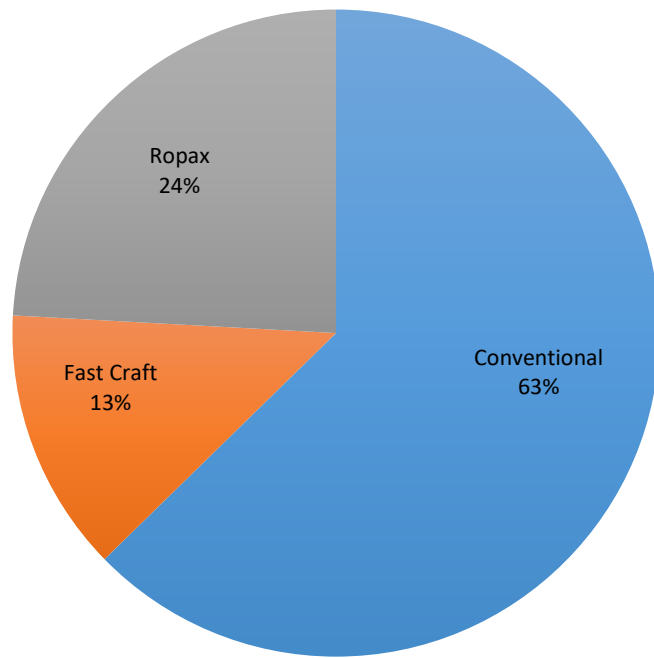
CARGO Ship Operations



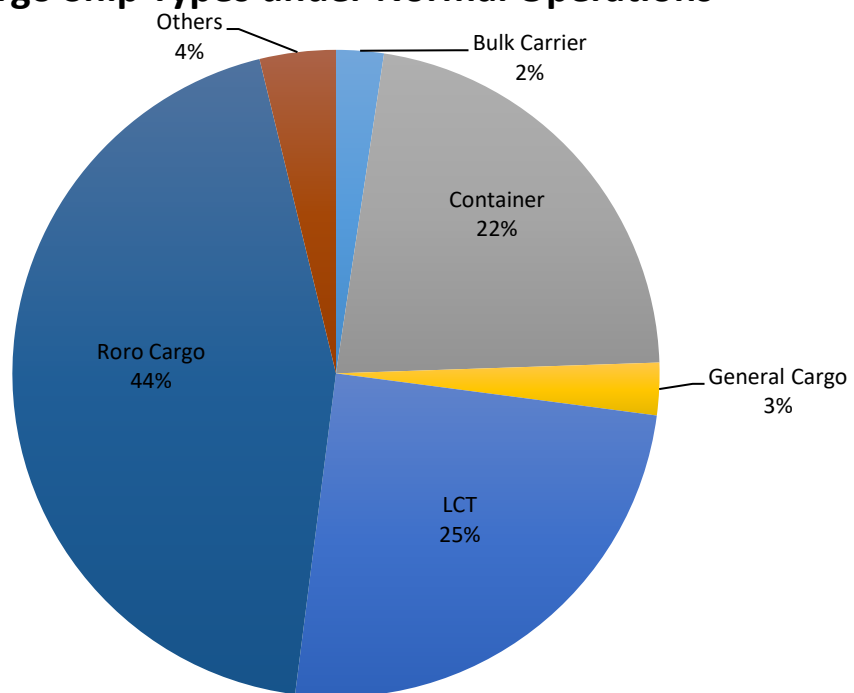
PASSENGER and CARGO Ship Operations



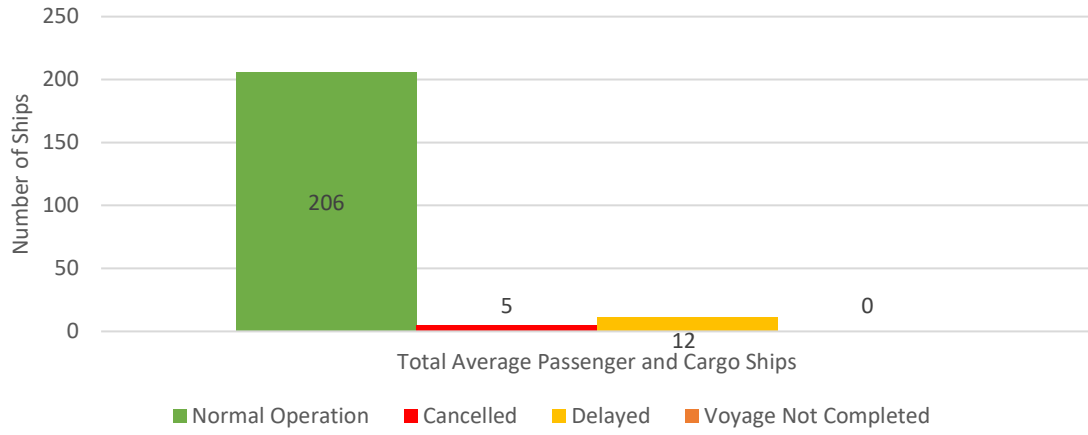
Passenger Ship Types under Normal Operations



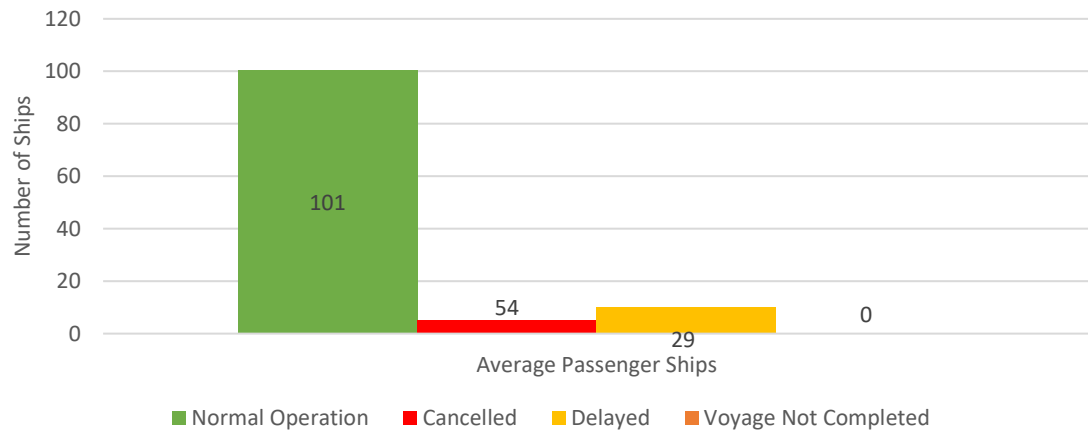
Cargo Ship Types under Normal Operations



Daily Average Passenger and Cargo Ship Operation



Daily Average Passenger Ship Operation



Daily Average Cargo Ship Operation

